

# Converting Colors

Android(4293288333)

Have a look what the booklet for  
Android(4293288333) contains.

<b>Android(4293288333)</b> .....	3
<i><b>Conversions</b></i> .....	4
<i><b>Details</b></i> .....	6
<i><b>Harmonies</b></i> .....	11
<i><b>Previews</b></i> .....	23
<i><b>Color Blindness Simulation</b></i> .....	26
<i><b>CSS Examples</b></i> .....	29

# **Color**

**Android(4293288333)**

# Conversions

## Conversions Part 1

Format	Color
Hex	E6618D
RGB	230, 97, 141
RGB Percent	90%, 38%, 55%
CMY	0.0980, 0.6196, 0.4471
CMYK	0.00, 0.58, 0.39, 0.10
HSL	340°, 73%, 64%
HSV	340°, 58%, 90%
XYZ	41.7155, 27.2955, 28.2692
YIQ	141.7830, 65.1440, 41.8800

# Conversions

## Conversions Part 2

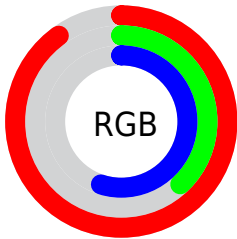
<b>Format</b>	<b>Color</b>
R <sub>Y</sub> B	230, 97, 141
Decimal	15098253
CIE Lab	59.25, 55.64, 2.15
CIE LCh	59, 55.678, 2.209
Yxy	27.2955, 0.4288, 0.2806
Android (android.graphics.Color)	4293288333 (0xFFE6618D)
YUV	141.7830, -0.3860, 77.3663
Hunter-Lab	52.2451, 51.0961, 4.4904

# Details

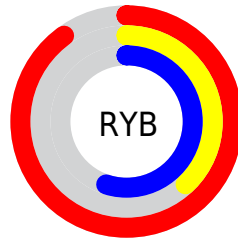
The Android color **4293288333** is a light color, and the websafe version is hex **FF6699**. A complement of this color would be **4284606138**, and the grayscale version is **4287532686**.

A 20% lighter version of the original color is **4294940866**, and **4289341275** is the 20% darker color. If you saturate the color by 10%, you get **4293282430**, and if you desaturate by 10%, it is **4293294236**.

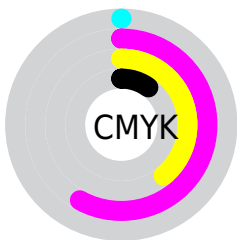
# Distribution



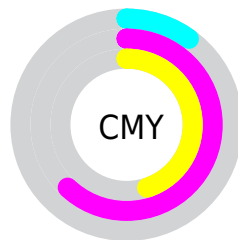
- Red (90%)
- Green (38%)
- Blue (55%)



- Red (90%)
- Yellow (38%)
- Blue (55%)



- Cyan (0%)
- Magenta (58%)
- Yellow (39%)
- Black (10%)



- Cyan (10%)
- Magenta (62%)
- Yellow (45%)

# Brightness & Saturation Gradients

These gradients show how the Android color 4293288333 changes by changing the brightness by 10 percent. The first figure shows a shift by +10% for each color and the second figure -10%.

Similar to the brightness gradients but the following saturation gradients show a change of the Android color 4293288333 by changing the saturation by 10% instead.



 4293288333

 4293288333

4294967295

 4291315060

 4294940866

 4289341275

 4294948318

 4287430724

 4294955515

 4285530158

 4294963199

 4283695129

 4282056706

 4279566336

 4278190080

 4293288333

 4293288333

 4293282430

 4293294236

 4293276526

 4293300140

 4293270623

 4293306043

 4293264719

 4293311947

 4293263436

 4293317850

 4293323753

 4293328889

 4293328895

# Harmonies

## Analogous

The Analogous color harmony consists of three colors that are next to each other on the color wheel.



4291652797



4293288333



4293159261

# Triad

The Triadic color harmony groups three colors that are evenly spaced from another and form a triangle on the color wheel.



4293288333



4285766454



4278231013

# Complementary

The Complementary color scheme is a pair of colors which are on the opposite of each other on the color wheel.



4293288333



4284606138

# Split Complementary

Split-complementary colors differ from the complementary color scheme. The scheme consists of three colors, the original color and two neighbors of the complement color.



4278232513



4293288333



4280591199

# Square

The Square scheme is like the rectangle color scheme, but the four colors are evenly spaced on the color wheel.



4293288333



4289039651



4278232721



4279342064

# Rectangle

The Rectangle color scheme consists of four colors that form a rectangle on the color wheel.



4293288333



4292244546



4278232721



4278231771



# Sweetspot

The Sweet Spot groups the original color and five complimentary colors.



4293288333



4294956258



4290404838



4286604910



4278190080



4286611584



# Same Dimension

The Same Dimension uses a secret algorithm to generate beautiful new colors.



4293288333



4294922121



4293293921



4285753195



4289921083



4281532433



# Inverse Universe

The Inverse Universe completely reimagines the original color for something new.



4293288333



4294922121



4284600550



4285753195



4289921083



4281532433



# Previews

## White Background



This preview shows how the Android color 4293288333 looks on a white background.

## Color Contrast Check

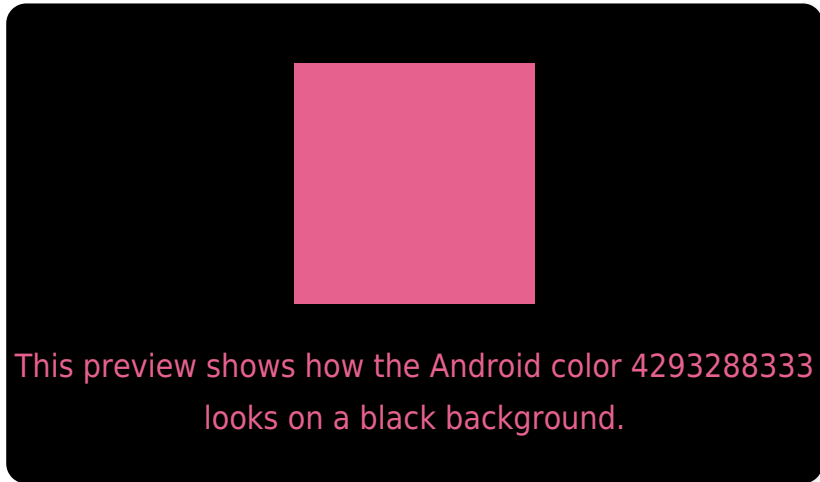
Large Text (above 18pt) WCAG AA ✓ Pass

Any Text WCAG AA ✗ Fail

Large Text (above 18pt) WCAG AAA ✗ Fail

Any Text WCAG AAA ✗ Fail

# Black Background



## Color Contrast Check

Large Text (above 18pt) WCAG AA ✓ Pass

Any Text WCAG AA ✓ Pass

Large Text (above 18pt) WCAG AAA ✓ Pass

Any Text WCAG AAA × Fail

If you want to check with other color combinations, try the [Color Contrast Checker](#).



# Android 4293288333 Background



This preview shows how black text looks on a background with the Android color 4293288333.



This preview shows how white text looks on a background with the Android color 4293288333.

# Color Blindness Simulation

Color vision deficiency is a very complex topic, and I could not describe the different causes any better than Wikipedia does, so if you want to learn more, you should check out their [article about color blindness](#).

## Dichromacy



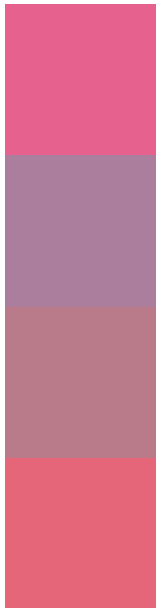
**Original Color**  
4293288333

**Protanopia**  
4287270568

**Deuteranopia**  
4288711303



# Trichromacy



**Original Color**  
4293288333

**Protanomaly**  
4289429150

**Deuteranomaly**  
4290345865

**Tritanomaly**  
4293223801

# Monochromacy



**Original Color**  
4293288333

**Achromatopsia**  
4287532686

**Achromatomaly**  
4289625742

# CSS Examples

## Text

The CSS property to change the color of the text to Android 4293288333 is called "color". The color property can be set on classes, ids or directly on the HTML element.

This example shows how text in the color `rgb(230, 97, 141)` looks like.

```
.text, #text, p{  
    color:rgb(230, 97, 141)  
}
```

If you want to add a text shadow in that color use the text-shadow property, you can generate a text shadow directly with our [CSS Text Shadow Generator](#).

Here you see how black text with a 4 pixel rgb(230, 97, 141) colored shadow looks like.

```
.shadow{ text-shadow: 4px 4px 2px rgb(230, 97, 141) }
```

## Border

The CSS property to change the border of an element to Android 4293288333 is called "border". The border property can be set on classes, ids or directly on the HTML element.

This example shows the color as border, it can be applied via the CSS property "border" or "border-color".

```
.border, #border, table{ border:4px solid rgb(230, 97, 141) }
```

If only the border color should be changed use the property border-color.

```
.border{ border-color:rgb(230, 97, 141) }
```

If you want to add a box shadow in that color use:

Here you see how a box with a 4 pixel rgb(230, 97, 141) colored shadow looks like.

```
.boxshadow{ -moz-box-shadow:4px 4px 4px  
4px rgb(230, 97, 141); -webkit-box-  
shadow:4px 4px 4px 4px rgb(230, 97, 141);  
box-shadow:4px 4px 4px 4px rgb(230, 97,  
141) }
```

# Background

The CSS property to change the background color of an element to Android 4293288333 is called "background". The background property can be set on classes, ids or directly on the HTML element.

```
.background, #background, body{  
background: rgb(230, 97, 141) }
```

If only the background color should be changed can be used:

```
.background{ background-color: rgb(230, 97,  
141) }
```

This example shows the color as background, it is applied via the CSS property "background".

To optimize and compress your CSS code, you can use our [online CSS compressor and optimizer](#) based on csstidy. If you want to create a linear or radial gradient as background or border, check our [CSS Gradient Generator](#).



Hey! You found this booklet interesting? Support Converting Colors with the new Membership Option!

The pro membership hides all ads, plus gives you double the colors in the color bucket, and more awesome pro features!

**[Learn more, Memberships starting at \\$2.50/m!](#)**

**Follow me  
on Twitter!**

@ConvertingColor