

# Converting Colors

Android(4293294744)

Have a look what the booklet for  
Android(4293294744) contains.

<b>Android(4293294744)</b> .....	3
<i><b>Conversions</b></i> .....	4
<i><b>Details</b></i> .....	6
<i><b>Harmonies</b></i> .....	11
<i><b>Previews</b></i> .....	23
<i><b>Color Blindness Simulation</b></i> .....	26
<i><b>CSS Examples</b></i> .....	29

# **Color**

**Android(4293294744)**

# Conversions

## Conversions Part 1

<b>Format</b>	<b>Color</b>
Hex	E67A98
RGB	230, 122, 152
RGB Percent	90%, 48%, 60%
CMY	0.0980, 0.5216, 0.4039
CMYK	0.00, 0.47, 0.34, 0.10
HSL	343°, 68%, 69%
HSV	343°, 47%, 90%
XYZ	45.2602, 33.0091, 33.6917
YIQ	157.7120, 54.7380, 32.2260

# Conversions

## Conversions Part 2

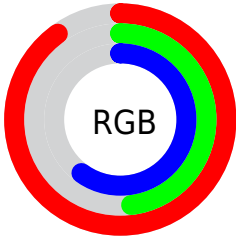
<b>Format</b>	<b>Color</b>
<b>R<sub>YB</sub></b>	230, 122, 152
Decimal	15104664
CIE <sub>Lab</sub>	64.17, 44.89, 2.95
CIE <sub>LCh</sub>	64, 44.991, 3.755
Yxy	33.0091, 0.4042, 0.2948
Android (android.graphics.Color)	4293294744 (0xFFE67A98)
YUV	157.7120, -2.8160, 63.3966
Hunter-Lab	57.4535, 40.0733, 5.4488

# Details

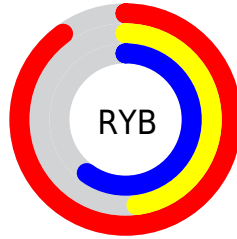
The Android color `4293294744` is a light color, and the websafe version is hex `CC6699`. A complement of this color would be `4286244552`, and the grayscale version is `4288585374`.

A 20% lighter version of the original color is `4294947278`, and `4289480037` is the 20% darker color. If you saturate the color by 10%, you get `4293288839`, and if you desaturate by 10%, it is `4293300649`.

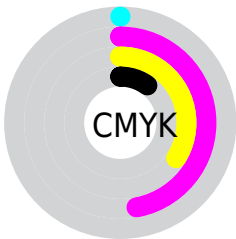
# Distribution



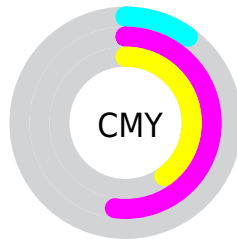
- Red (90%)
- Green (48%)
- Blue (60%)



- Red (90%)
- Yellow (48%)
- Blue (60%)



- Cyan (0%)
- Magenta (47%)
- Yellow (34%)
- Black (10%)



- Cyan (10%)
- Magenta (52%)
- Yellow (40%)

# Brightness & Saturation Gradients

These gradients show how the Android color 4293294744 changes by changing the brightness by 10 percent. The first figure shows a shift by +10% for each color and the second figure -10%.

Similar to the brightness gradients but the following saturation gradients show a change of the Android color 4293294744 by changing the saturation by 10% instead.





4293294744



4293294744

4294967295



4291321982



4294947278



4289480037



4294954474



4287572813



4294961919



4285729335



4283957282



4282253322



4280418305



4278190080



4293294744



4293294744

 4293288839

 4293300649

 4293282935

 4293306553

 4293277030

 4293312458

 4293271126

 4293318362

 4293265221

 4293324267

 4293263424

 4293328892

 4293328895

# Harmonies

## Analogous

The Analogous color harmony consists of three colors that are next to each other on the color wheel.



4291920320



4293294744



4293164913

# Triad

The Triadic color harmony groups three colors that are evenly spaced from another and form a triangle on the color wheel.



4293294744



4286948950



4278233571

# Complementary

The Complementary color scheme is a pair of colors which are on the opposite of each other on the color wheel.



4293294744



4286244552

# Split Complementary

Split-complementary colors differ from the complementary color scheme. The scheme consists of three colors, the original color and two neighbors of the complement color.



4278235079



4293294744



4283477367

# Square

The Square scheme is like the rectangle color scheme, but the four colors are evenly spaced on the color wheel.



4293294744



4289698633



4278235295



4284587755

# Rectangle

The Rectangle color scheme consists of four colors that form a rectangle on the color wheel.



4293294744



4292446300



4278235295



4278234331



# Sweetspot

The Sweet Spot groups the original color and five complimentary colors.



4293294744



4294958053



4291263206



4286605936



4278190080



4286611584



# Same Dimension

The Same Dimension uses a secret algorithm to generate beautiful new colors.



4293294744



4294930584



4293300602



4285753194



4289921074



4281532430



# Inverse Universe

The Inverse Universe completely reimagines the original color for something new.



4293294744



4294930584



4286238694



4285753194



4289921074



4281532430



# Previews

## White Background



This preview shows how the Android color 4293294744 looks on a white background.

## Color Contrast Check

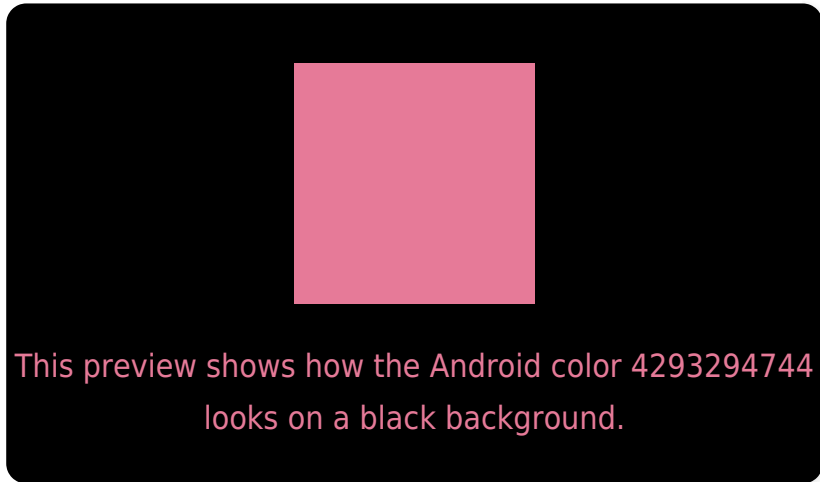
Large Text (above 18pt) WCAG AA × Fail

Any Text WCAG AA × Fail

Large Text (above 18pt) WCAG AAA × Fail

Any Text WCAG AAA × Fail

# Black Background



## Color Contrast Check

Large Text (above 18pt) WCAG AA ✓ Pass

Any Text WCAG AA ✓ Pass

Large Text (above 18pt) WCAG AAA ✓ Pass

Any Text WCAG AAA ✓ Pass

If you want to check with other color combinations, try the [Color Contrast Checker](#).



# Android 4293294744 Background



This preview shows how black text looks on a background with the Android color 4293294744.



This preview shows how white text looks on a background with the Android color 4293294744.

# Color Blindness Simulation

Color vision deficiency is a very complex topic, and I could not describe the different causes any better than Wikipedia does, so if you want to learn more, you should check out their [article about color blindness](#).


## Dichromacy



**Original Color**  
4293294744

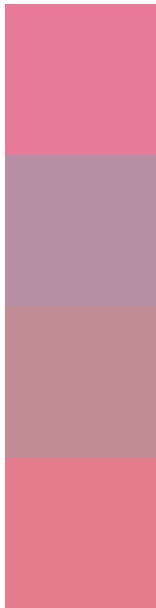
**Protanopia**  
4288322475

**Deuteranopia**  
4289632147



**Tritanopia**  
4293164422

# Trichromacy



**Original Color**  
4293294744

**Protanomaly**  
4290154404

**Deuteranomaly**  
4290940053

**Tritanomaly**  
4293229709

# Monochromacy



**Original Color**  
4293294744

**Achromatopsia**  
4288585374

**Achromatomaly**  
4290285980

# CSS Examples

## Text

The CSS property to change the color of the text to Android 4293294744 is called "color". The color property can be set on classes, ids or directly on the HTML element.

This example shows how text in the color `rgb(230, 122, 152)` looks like.

```
.text, #text, p{  
    color:rgb(230, 122, 152)  
}
```

If you want to add a text shadow in that color use the text-shadow property, you can generate a text shadow directly with our [CSS Text Shadow Generator](#).

Here you see how black text with a 4 pixel rgb(230, 122, 152) colored shadow looks like.

```
.shadow{ text-shadow: 4px 4px 2px rgb(230, 122, 152) }
```

## Border

The CSS property to change the border of an element to Android 4293294744 is called "border". The border property can be set on classes, ids or directly on the HTML element.

This example shows the color as border, it can be applied via the CSS property "border" or "border-color".

```
.border, #border, table{ border:4px solid rgb(230, 122, 152) }
```

If only the border color should be changed use the property `border-color`.

```
.border{ border-color:rgb(230, 122, 152) }
```

If you want to add a box shadow in that color use:

Here you see how a box with a 4 pixel `rgb(230, 122, 152)` colored shadow looks like.

```
.boxshadow{ -moz-box-shadow:4px 4px 4px 4px rgb(230, 122, 152); -webkit-box-shadow:4px 4px 4px 4px rgb(230, 122, 152); box-shadow:4px 4px 4px 4px rgb(230, 122, 152) }
```

# Background

The CSS property to change the background color of an element to Android 4293294744 is called "background". The background property can be set on classes, ids or directly on the HTML element.

```
.background, #background, body{  
background: rgb(230, 122, 152) }
```

If only the background color should be changed can be used:

```
.background{ background-color: rgb(230,  
122, 152) }
```

This example shows the color as background, it is applied via the CSS property "background".

To optimize and compress your CSS code, you can use our [online CSS compressor and optimizer](#) based on csstidy. If you want to create a linear or radial gradient as background or border, check our [CSS Gradient Generator](#).



Hey! You found this booklet interesting? Support Converting Colors with the new Membership Option!

The pro membership hides all ads, plus gives you double the colors in the color bucket, and more awesome pro features!

**[Learn more, Memberships starting at \\$2.50/m!](#)**

**Follow me  
on Twitter!**

@ConvertingColor