

# Converting Colors

Android(4293300645)

Have a look what the booklet for  
Android(4293300645) contains.

<b>Android(4293300645)</b> .....	3
<i><b>Conversions</b></i> .....	4
<i><b>Details</b></i> .....	6
<i><b>Harmonies</b></i> .....	11
<i><b>Previews</b></i> .....	23
<i><b>Color Blindness Simulation</b></i> .....	26
<i><b>CSS Examples</b></i> .....	29

# **Color**

**Android(4293300645)**

# Conversions

## Conversions Part 1

Format	Color
Hex	E691A5
RGB	230, 145, 165
RGB Percent	90%, 57%, 65%
CMY	0.0980, 0.4314, 0.3529
CMYK	0.00, 0.37, 0.28, 0.10
HSL	346°, 63%, 74%
HSV	346°, 37%, 90%
XYZ	49.5501, 39.7904, 40.6661
YIQ	172.6950, 44.2400, 24.2400

# Conversions

## Conversions Part 2

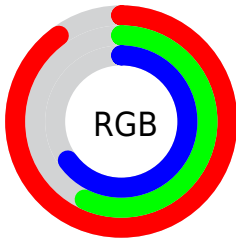
Format	Color
R <sub>Y</sub> B	230, 145, 165
Decimal	15110565
CIE Lab	69.32, 34.65, 3.07
CIE LCh	69, 34.790, 5.068
Yxy	39.7904, 0.3811, 0.3061
Android (android.graphics.Color)	4293300645 (0xFFE691A5)
YUV	172.6950, -3.7936, 50.2565
Hunter-Lab	63.0796, 29.8252, 5.9328

# Details

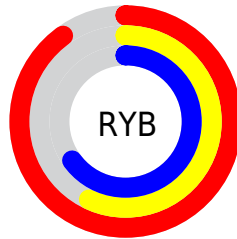
The Android color `4293300645` is a light color, and the websafe version is hex `FF9999`. A complement of this color would be `4287751890`, and the grayscale version is `4289572269`.

A 20% lighter version of the original color is `4294953180`, and `4289551729` is the 20% darker color. If you saturate the color by 10%, you get `4293294739`, and if you desaturate by 10%, it is `4293306551`.

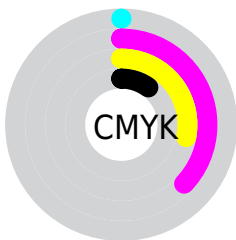
# Distribution



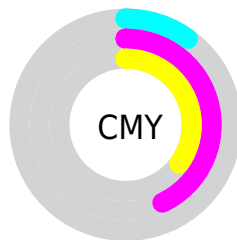
- Red (90%)
- Green (57%)
- Blue (65%)



- Red (90%)
- Yellow (57%)
- Blue (65%)



- Cyan (0%)
- Magenta (37%)
- Yellow (28%)
- Black (10%)



- Cyan (10%)
- Magenta (43%)
- Yellow (35%)

# Brightness & Saturation Gradients

These gradients show how the Android color 4293300645 changes by changing the brightness by 10 percent. The first figure shows a shift by +10% for each color and the second figure -10%.

Similar to the brightness gradients but the following saturation gradients show a change of the Android color 4293300645 by changing the saturation by 10% instead.



 4293300645

 4293300645

4294967295

 4291393419

 4294953180

 4289551729

 4294960376

 4287710297

 4285868866

 4284158508

 4282449943

 4281073665

 4278190080

 4293300645

 4293300645

 4293294739

 4293306551

 4293288834

 4293312456

 4293282928

 4293318362

 4293277023

 4293324267

 4293271117

 4293328893

 4293265211

 4293328895

 4293263414

# Harmonies

## Analogous

The Analogous color harmony consists of three colors that are next to each other on the color wheel.



4292253124



4293300645



4293236103

# Triad

The Triadic color harmony groups three colors that are evenly spaced from another and form a triangle on the color wheel.



4293300645



4288131701



4283675874

# Complementary

The Complementary color scheme is a pair of colors which are on the opposite of each other on the color wheel.



4293300645



4287751890

# Split Complementary

Split-complementary colors differ from the complementary color scheme. The scheme consists of three colors, the original color and two neighbors of the complement color.



4281645516



4293300645



4285708430

# Square

The Square scheme is like the rectangle color scheme, but the four colors are evenly spaced on the color wheel.



4293300645



4290357610



4283087534



4287015912

# Rectangle

The Rectangle color scheme consists of four colors that form a rectangle on the color wheel.



4293300645



4292582263



4283087534



4282693340



# Sweetspot

The Sweet Spot groups the original color and five complimentary colors.



4293300645



4294960106



4291924454



4286607219



4278190080



4286611584



# Same Dimension

The Same Dimension uses a secret algorithm to generate beautiful new colors.



4293300645



4294938537



4293306001



4285753194



4289921066



4281532428



# Inverse Universe

The Inverse Universe completely reimagines the original color for something new.



4293300645



4294938537



4287746534



4285753194



4289921066



4281532428



# Previews

## White Background



This preview shows how the Android color 4293300645 looks on a white background.

## Color Contrast Check

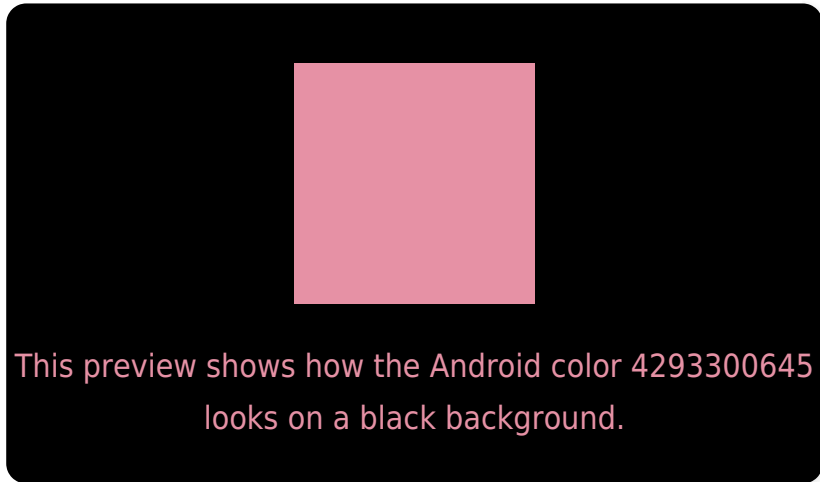
Large Text (above 18pt) WCAG AA × Fail

Any Text WCAG AA × Fail

Large Text (above 18pt) WCAG AAA × Fail

Any Text WCAG AAA × Fail

# Black Background



## Color Contrast Check

Large Text (above 18pt) WCAG AA ✓ Pass

Any Text WCAG AA ✓ Pass

Large Text (above 18pt) WCAG AAA ✓ Pass

Any Text WCAG AAA ✓ Pass

If you want to check with other color combinations, try the [Color Contrast Checker](#).



# Android 4293300645 Background



This preview shows how black text looks on a background with the Android color 4293300645.




This preview shows how white text looks on a background with the Android color 4293300645.

# Color Blindness Simulation

Color vision deficiency is a very complex topic, and I could not describe the different causes any better than Wikipedia does, so if you want to learn more, you should check out their [article about color blindness](#).

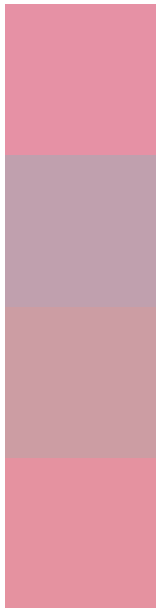
## Dichromacy





**Tritanopia**  
4293235357

# Trichromacy



**Original Color**  
4293300645

**Protanomaly**  
4290814126

**Deuteranomaly**  
4291599779

**Tritanomaly**  
4293235360

# Monochromacy



**Original Color**  
4293300645

**Achromatopsia**  
4289572269

**Achromatomaly**  
4290945962

# CSS Examples

## Text

The CSS property to change the color of the text to Android 4293300645 is called "color". The color property can be set on classes, ids or directly on the HTML element.

This example shows how text in the color `rgb(230, 145, 165)` looks like.

```
.text, #text, p{  
    color:rgb(230, 145, 165)  
}
```

If you want to add a text shadow in that color use the text-shadow property, you can generate a text shadow directly with our [CSS Text Shadow Generator](#).

Here you see how black text with a 4 pixel rgb(230, 145, 165) colored shadow looks like.

```
.shadow{ text-shadow: 4px 4px 2px rgb(230, 145, 165) }
```

## Border

The CSS property to change the border of an element to Android 4293300645 is called "border". The border property can be set on classes, ids or directly on the HTML element.

This example shows the color as border, it can be applied via the CSS property "border" or "border-color".

```
.border, #border, table{ border:4px solid rgb(230, 145, 165) }
```

If only the border color should be changed use the property `border-color`.

```
.border{ border-color:rgb(230, 145, 165) }
```

If you want to add a box shadow in that color use:

Here you see how a box with a 4 pixel `rgb(230, 145, 165)` colored shadow looks like.

```
.boxshadow{ -moz-box-shadow:4px 4px 4px  
4px rgb(230, 145, 165); -webkit-box-  
shadow:4px 4px 4px 4px rgb(230, 145, 165);  
box-shadow:4px 4px 4px 4px rgb(230, 145,  
165) }
```

# Background

The CSS property to change the background color of an element to Android 4293300645 is called "background". The background property can be set on classes, ids or directly on the HTML element.

```
.background, #background, body{  
background: rgb(230, 145, 165) }
```

If only the background color should be changed can be used:

```
.background{ background-color: rgb(230,  
145, 165) }
```

This example shows the color as background, it is applied via the CSS property "background".

To optimize and compress your CSS code, you can use our [online CSS compressor and optimizer](#) based on csstidy. If you want to create a linear or radial gradient as background or border, check our [CSS Gradient Generator](#).



Hey! You found this booklet interesting? Support Converting Colors with the new Membership Option!

The pro membership hides all ads, plus gives you double the colors in the color bucket, and more awesome pro features!

**[Learn more, Memberships starting at \\$2.50/m!](#)**

**Follow me  
on Twitter!**

@ConvertingColor