

Converting Colors

Android(4293302700)

Have a look what the booklet for
Android(4293302700) contains.

Android(4293302700)	3
<i>Conversions</i>	4
<i>Details</i>	6
<i>Harmonies</i>	11
<i>Previews</i>	23
<i>Color Blindness Simulation</i>	26
<i>CSS Examples</i>	29

Color

Android(4293302700)

Conversions

Conversions Part 1

Format	Color
Hex	E699AC
RGB	230, 153, 172
RGB Percent	90%, 60%, 67%
CMY	0.0980, 0.4000, 0.3255
CMYK	0.00, 0.33, 0.25, 0.10
HSL	345°, 61%, 75%
HSV	345°, 33%, 90%
XYZ	51.4708, 42.5840, 44.5365
YIQ	178.1890, 39.7930, 22.2330

Conversions

Conversions Part 2

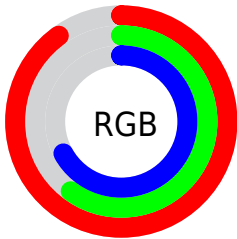
Format	Color
R_{YB}	230, 153, 172
Decimal	15112620
CIE _{Lab}	71.27, 31.38, 2.01
CIE _{LCh}	71, 31.440, 3.659
Yxy	42.5840, 0.3714, 0.3073
Android (android.graphics.Color)	4293302700 (0xFFE699AC)
YUV	178.1890, -3.0512, 45.4382
Hunter-Lab	65.2564, 26.5924, 5.2150

Details

The Android color `4293302700` is a light color, and the websafe version is hex `CC9999`. A complement of this color would be `4288276179`, and the grayscale version is `4289901234`.

A 20% lighter version of the original color is `4294955235`, and `4289553784` is the 20% darker color. If you saturate the color by 10%, you get `4293296795`, and if you desaturate by 10%, it is `4293308605`.

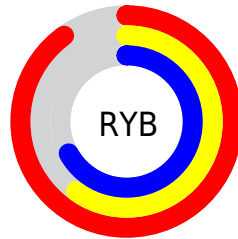
Distribution



Red (90%)

Green (60%)

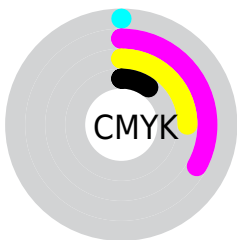
Blue (67%)



Red (90%)

Yellow (60%)

Blue (67%)

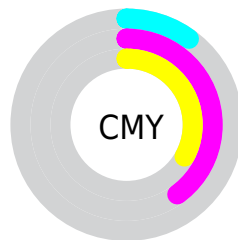


Cyan (0%)

Magenta (33%)

Yellow (25%)

Black (10%)



Cyan (10%)

Magenta (40%)

Yellow (33%)

Brightness & Saturation Gradients

These gradients show how the Android color 4293302700 changes by changing the brightness by 10 percent. The first figure shows a shift by +10% for each color and the second figure -10%.

Similar to the brightness gradients but the following saturation gradients show a change of the Android color 4293302700 by changing the saturation by 10% instead.

 4293302700

 4293302700

4294967295

 4291395473

 4294955235

 4289553784


 4294962687

 4287712351

 4285936712

 4284226609

 4282515996

 4281204737

 4278190080

 4293302700

 4293302700

 4293296795

 4293308605

 4293290889

 4293314511

 4293284984

 4293320416

 4293279079

 4293326321

 4293273173

 4293328895

 4293267268

 4293263417

Harmonies

Analogous

The Analogous color harmony consists of three colors that are next to each other on the color wheel.



4292255176



4293302700



4293303440

Triad

The Triadic color harmony groups three colors that are evenly spaced from another and form a triangle on the color wheel.



4293302700



4288722558



4284856545

Complementary

The Complementary color scheme is a pair of colors which are on the opposite of each other on the color wheel.



4293302700



4288276179

Split Complementary

Split-complementary colors differ from the complementary color scheme. The scheme consists of three colors, the original color and two neighbors of the complement color.



4283481549



4293302700



4286561428

Square

The Square scheme is like the rectangle color scheme, but the four colors are evenly spaced on the color wheel.



4293302700



4290752117



4284464817



4287541479

Rectangle

The Rectangle color scheme consists of four colors that form a rectangle on the color wheel.



4293302700



4292780417



4284464817



4284136156

Sweetspot

The Sweet Spot groups the original color and five complimentary colors.



4293302700



4294960876



4292057574



4286607476



4278190080



4286611584

Same Dimension

The Same Dimension uses a secret algorithm to generate beautiful new colors.



4293302700



4294941106



4293307545



4285753194



4289921068



4281532429

Inverse Universe

The Inverse Universe completely reimagines the original color for something new.



4293302700



4294941106



4288271334



4285753194



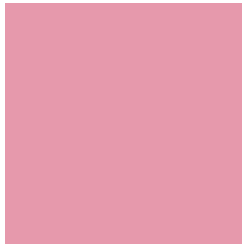
4289921068



4281532429

Previews

White Background



This preview shows how the Android color 4293302700 looks on a white background.

Color Contrast Check

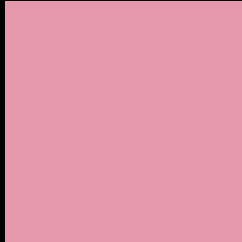
Large Text (above 18pt) WCAG AA × Fail

Any Text WCAG AA × Fail

Large Text (above 18pt) WCAG AAA × Fail

Any Text WCAG AAA × Fail

Black Background



This preview shows how the Android color 4293302700 looks on a black background.

Color Contrast Check

Large Text (above 18pt) WCAG AA ✓ Pass

Any Text WCAG AA ✓ Pass

Large Text (above 18pt) WCAG AAA ✓ Pass

Any Text WCAG AAA ✓ Pass

If you want to check with other color combinations, try the [Color Contrast Checker](#).

Android 4293302700 Background



This preview shows how black text looks on a background with the Android color 4293302700.




This preview shows how white text looks on a background with the Android color 4293302700.

Color Blindness Simulation

Color vision deficiency is a very complex topic, and I could not describe the different causes any better than Wikipedia does, so if you want to learn more, you should check out their [article about color blindness](#).

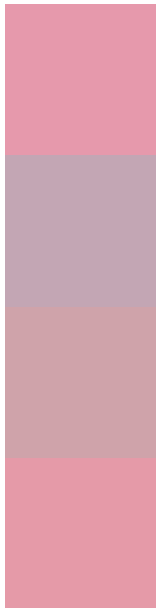
Dichromacy





Tritanopia
4293237414

Trichromacy



Original Color
4293302700

Protanomaly
4291012276

Deuteranomaly
4291797930

Tritanomaly
4293237416

Monochromacy



Original Color
4293302700

Achromatopsia
4289901234

Achromatomaly
4291144112

CSS Examples

Text

The CSS property to change the color of the text to Android 4293302700 is called "color". The color property can be set on classes, ids or directly on the HTML element.

This example shows how text in the color `rgb(230, 153, 172)` looks like.

```
.text, #text, p{  
    color:rgb(230, 153, 172)  
}
```

If you want to add a text shadow in that color use the text-shadow property, you can generate a text shadow directly with our [CSS Text Shadow Generator](#).

Here you see how black text with a 4 pixel rgb(230, 153, 172) colored shadow looks like.

```
.shadow{ text-shadow: 4px 4px 2px rgb(230, 153, 172) }
```

Border

The CSS property to change the border of an element to Android 4293302700 is called "border". The border property can be set on classes, ids or directly on the HTML element.

This example shows the color as border, it can be applied via the CSS property "border" or "border-color".

```
.border, #border, table{ border:4px solid rgb(230, 153, 172) }
```

If only the border color should be changed use the property border-color.

```
.border{ border-color:rgb(230, 153, 172) }
```

If you want to add a box shadow in that color use:

Here you see how a box with a 4 pixel rgb(230, 153, 172) colored shadow looks like.

```
.boxshadow{ -moz-box-shadow:4px 4px 4px  
4px rgb(230, 153, 172); -webkit-box-  
shadow:4px 4px 4px 4px rgb(230, 153, 172);  
box-shadow:4px 4px 4px 4px rgb(230, 153,  
172) }
```

Background

The CSS property to change the background color of an element to Android 4293302700 is called "background". The background property can be set on classes, ids or directly on the HTML element.

```
.background, #background, body{  
background: rgb(230, 153, 172) }
```

If only the background color should be changed can be used:

```
.background{ background-color: rgb(230,  
153, 172) }
```

This example shows the color as background, it is applied via the CSS property "background".

To optimize and compress your CSS code, you can use our [online CSS compressor and optimizer](#) based on csstidy. If you want to create a linear or radial gradient as background or border, check our [CSS Gradient Generator](#).

Hey! You found this booklet interesting? Support Converting Colors with the new Membership Option!

The pro membership hides all ads, plus gives you double the colors in the color bucket, and more awesome pro features!

[Learn more, Memberships starting at \\$2.50/m!](#)

**Follow me
on Twitter!**

@ConvertingColor