

# Converting Colors

Android(4293302958)

Have a look what the booklet for  
Android(4293302958) contains.

<b>Android(4293302958)</b> .....	3
<b><i>Conversions</i></b> .....	4
<b><i>Details</i></b> .....	6
<b><i>Harmonies</i></b> .....	11
<b><i>Previews</i></b> .....	23
<b><i>Color Blindness Simulation</i></b> .....	26
<b><i>CSS Examples</i></b> .....	29

# **Color**

**Android(4293302958)**

# Conversions

## Conversions Part 1

Format	Color
Hex	E69AAE
RGB	230, 154, 174
RGB Percent	90%, 60%, 68%
CMY	0.0980, 0.3961, 0.3176
CMYK	0.00, 0.33, 0.24, 0.10
HSL	344°, 60%, 75%
HSV	344°, 33%, 90%
XYZ	51.8287, 42.9902, 45.6107
YIQ	179.0040, 38.8760, 22.3320

# Conversions

## Conversions Part 2

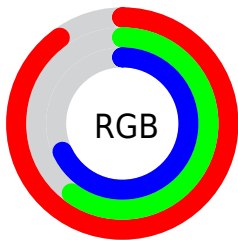
Format	Color
R <sub>Y</sub> B	230, 154, 174
Decimal	15112878
CIE Lab	71.55, 31.13, 1.30
CIE LCh	72, 31.153, 2.390
Yxy	42.9902, 0.3691, 0.3061
Android (android.graphics.Color)	4293302958 (0xFFE69AAE)
YUV	179.0040, -2.4670, 44.7235
Hunter-Lab	65.5669, 26.3569, 4.6526

# Details

The Android color `4293302958` is a light color, and the websafe version is hex `CC9999`. A complement of this color would be `4288341714`, and the grayscale version is `4289967027`.

A 20% lighter version of the original color is `4294955493`, and `4289554042` is the 20% darker color. If you saturate the color by 10%, you get `4293297053`, and if you desaturate by 10%, it is `4293308863`.

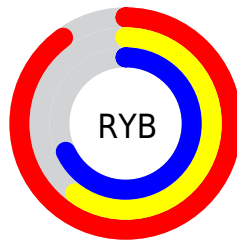
# Distribution



Red (90%)

Green (60%)

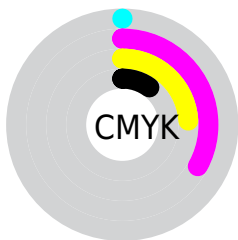
Blue (68%)



Red (90%)

Yellow (60%)

Blue (68%)

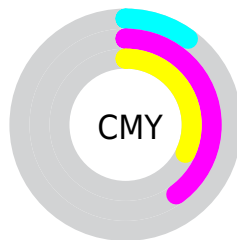


Cyan (0%)

Magenta (33%)

Yellow (24%)

Black (10%)



Cyan (10%)

Magenta (40%)

Yellow (32%)

# Brightness & Saturation Gradients

These gradients show how the Android color 4293302958 changes by changing the brightness by 10 percent. The first figure shows a shift by +10% for each color and the second figure -10%.

Similar to the brightness gradients but the following saturation gradients show a change of the Android color 4293302958 by changing the saturation by 10% instead.



 4293302958

 4293302958

4294967295

 4291395731

 4294955493

 4289554042

 4294962943

 4287712609

 4285936969

 4284226867

 4282581790

 4281204740

 4278190080

 4293302958

 4293302958

 4293297053

 4293308863

 4293291148

 4293314768

 4293285243

 4293320673

 4293279338

 4293326578

 4293273433

 4293328895

 4293267528

 4293263421

# Harmonies

## Analogous

The Analogous color harmony consists of three colors that are next to each other on the color wheel.



4292189898



4293302958



4293369234

# Triad

The Triadic color harmony groups three colors that are evenly spaced from another and form a triangle on the color wheel.



4293302958



4288919423



4284856801

# Complementary

The Complementary color scheme is a pair of colors which are on the opposite of each other on the color wheel.



4293302958



4288341714

# Split Complementary

Split-complementary colors differ from the complementary color scheme. The scheme consists of three colors, the original color and two neighbors of the complement color.



4283678413



4293302958



4286692500

# Square

The Square scheme is like the rectangle color scheme, but the four colors are evenly spaced on the color wheel.



4293302958



4290883190



4284661681



4287476200

# Rectangle

The Rectangle color scheme consists of four colors that form a rectangle on the color wheel.



4293302958



4292846211



4284661681



4284201947



# Sweetspot

The Sweet Spot groups the original color and five complimentary colors.



4293302958



4294960876



4291992294



4286607476



4278190080



4286611584



# Same Dimension

The Same Dimension uses a secret algorithm to generate beautiful new colors.



4293302958



4294941108



4293307546



4285753194



4289921071



4281532429



# Inverse Universe

The Inverse Universe completely reimagines the original color for something new.



4293302958



4294941108



4288337126



4285753194



4289921071



4281532429



# Previews

## White Background



This preview shows how the Android color 4293302958 looks on a white background.

## Color Contrast Check

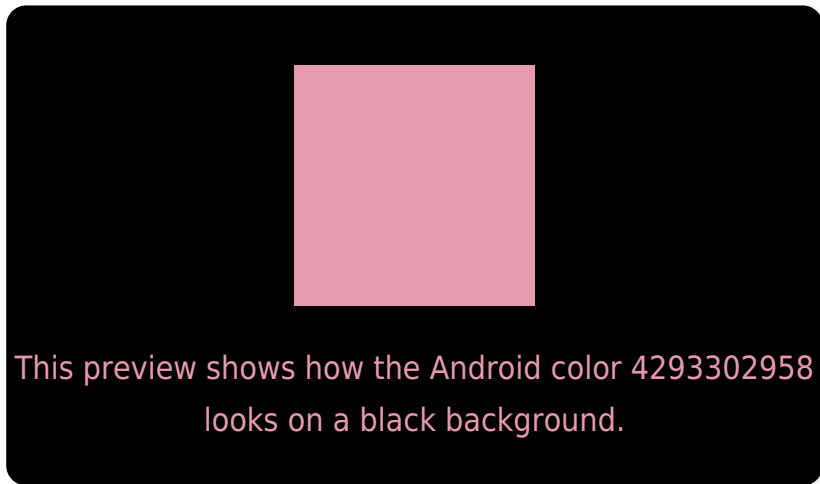
Large Text (above 18pt) WCAG AA × Fail

Any Text WCAG AA × Fail

Large Text (above 18pt) WCAG AAA × Fail

Any Text WCAG AAA × Fail

# Black Background



## Color Contrast Check

Large Text (above 18pt) WCAG AA ✓ Pass

Any Text WCAG AA ✓ Pass

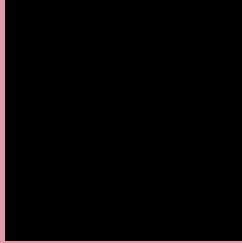
Large Text (above 18pt) WCAG AAA ✓ Pass

Any Text WCAG AAA ✓ Pass

If you want to check with other color combinations, try the [Color Contrast Checker](#).



# Android 4293302958 Background



This preview shows how black text looks on a background with the Android color 4293302958.




This preview shows how white text looks on a background with the Android color 4293302958.

# Color Blindness Simulation

Color vision deficiency is a very complex topic, and I could not describe the different causes any better than Wikipedia does, so if you want to learn more, you should check out their [article about color blindness](#).

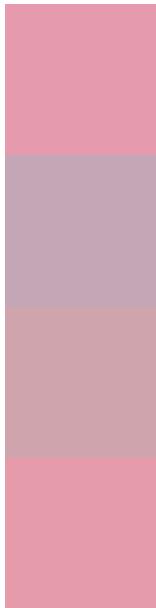
## Dichromacy





**Tritanopia**  
4293237671

# Trichromacy



**Original Color**  
4293302958

**Protanomaly**  
4291078070

**Deuteranomaly**  
4291798188

**Tritanomaly**  
4293237674

# Monochromacy



**Original Color**  
4293302958

**Achromatopsia**  
4289967027

**Achromatomaly**  
4291209905

# CSS Examples

## Text

The CSS property to change the color of the text to Android 4293302958 is called "color". The color property can be set on classes, ids or directly on the HTML element.

This example shows how text in the color `rgb(230, 154, 174)` looks like.

```
.text, #text, p{  
    color:rgb(230, 154, 174)  
}
```

If you want to add a text shadow in that color use the text-shadow property, you can generate a text shadow directly with our [CSS Text Shadow Generator](#).

Here you see how black text with a 4 pixel rgb(230, 154, 174) colored shadow looks like.

```
.shadow{ text-shadow: 4px 4px 2px rgb(230, 154, 174) }
```

## Border

The CSS property to change the border of an element to Android 4293302958 is called "border". The border property can be set on classes, ids or directly on the HTML element.

This example shows the color as border, it can be applied via the CSS property "border" or "border-color".

```
.border, #border, table{ border:4px solid rgb(230, 154, 174) }
```

If only the border color should be changed use the property `border-color`.

```
.border{ border-color:rgb(230, 154, 174) }
```

If you want to add a box shadow in that color use:

Here you see how a box with a 4 pixel `rgb(230, 154, 174)` colored shadow looks like.

```
.boxshadow{ -moz-box-shadow:4px 4px 4px  
4px rgb(230, 154, 174); -webkit-box-  
shadow:4px 4px 4px 4px rgb(230, 154, 174);  
box-shadow:4px 4px 4px 4px rgb(230, 154,  
174) }
```

# Background

The CSS property to change the background color of an element to Android 4293302958 is called "background". The background property can be set on classes, ids or directly on the HTML element.

```
.background, #background, body{  
background: rgb(230, 154, 174) }
```

If only the background color should be changed can be used:

```
.background{ background-color: rgb(230,  
154, 174) }
```

This example shows the color as background, it is applied via the CSS property "background".

To optimize and compress your CSS code, you can use our [online CSS compressor and optimizer](#) based on csstidy. If you want to create a linear or radial gradient as background or border, check our [CSS Gradient Generator](#).



Hey! You found this booklet interesting? Support Converting Colors with the new Membership Option!

The pro membership hides all ads, plus gives you double the colors in the color bucket, and more awesome pro features!

**[Learn more, Memberships starting at \\$2.50/m!](#)**

**Follow me  
on Twitter!**

@ConvertingColor