

Converting Colors

Android(4293311674)

Have a look what the booklet for
Android(4293311674) contains.

Android(4293311674)	3
<i>Conversions</i>	4
<i>Details</i>	6
<i>Harmonies</i>	11
<i>Previews</i>	23
<i>Color Blindness Simulation</i>	26
<i>CSS Examples</i>	29

Color

Android(4293311674)

Conversions

Conversions Part 1

Format	Color
Hex	E6BCBA
RGB	230, 188, 186
RGB Percent	90%, 74%, 73%
CMY	0.0980, 0.2627, 0.2706
CMYK	0.00, 0.18, 0.19, 0.10
HSL	3°, 47%, 82%
HSV	3°, 19%, 90%
XYZ	59.4793, 56.3346, 54.1931
YIQ	200.3300, 25.6740, 8.2820

Conversions

Conversions Part 2

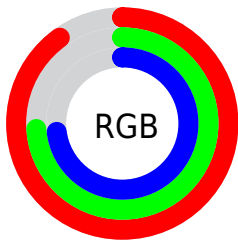
Format	Color
R _Y B	230, 188, 186
Decimal	15121594
CIE Lab	79.80, 14.73, 6.68
CIE LCh	80, 16.170, 24.403
Yxy	56.3346, 0.3499, 0.3314
Android (android.graphics.Color)	4293311674 (0xFFE6BCBA)
YUV	200.3300, -7.0647, 26.0206
Hunter-Lab	75.0564, 10.1057, 9.7302

Details

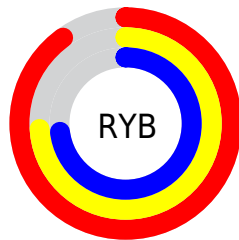
The Android color `4293311674` is a light color, and the websafe version is hex `FFCCCC`. A complement of this color would be `4290438374`, and the grayscale version is `4291348680`.

A 20% lighter version of the original color is `4294964466`, and `4289628037` is the 20% darker color. If you saturate the color by 10%, you get `4293306019`, and if you desaturate by 10%, it is `4293317329`.

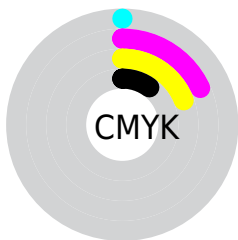
Distribution



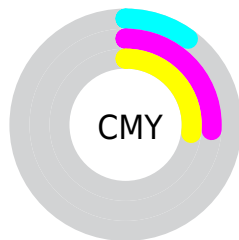
- Red (90%)
- Green (74%)
- Blue (73%)



- Red (90%)
- Yellow (74%)
- Blue (73%)



- Cyan (0%)
- Magenta (18%)
- Yellow (19%)
- Black (10%)



- Cyan (10%)
- Magenta (26%)
- Yellow (27%)

Brightness & Saturation Gradients

These gradients show how the Android color 4293311674 changes by changing the brightness by 10 percent. The first figure shows a shift by +10% for each color and the second figure -10%.

Similar to the brightness gradients but the following saturation gradients show a change of the Android color 4293311674 by changing the saturation by 10% instead.

 4293311674

 4293311674

4294967295

 4291469727

 4294964466

 4289628037

 4287851884

 4286141780

 4284431676

 4282853159

 4281274898

 4279959553

 4278190080

 4293311674

 4293311674

 4293306019

 4293317329

 4293300364

 4293322984

 4293294709

 4293328639

 4293289054

 4293328895

 4293283399

 4293277744

 4293272089

 4293266434

 4293265920

Harmonies

Analogous

The Analogous color harmony consists of three colors that are next to each other on the color wheel.



4293115081



4293311674



4292984750

Triad

The Triadic color harmony groups three colors that are evenly spaced from another and form a triangle on the color wheel.



4293311674



4289973684



4289906915

Complementary

The Complementary color scheme is a pair of colors which are on the opposite of each other on the color wheel.



4293311674



4290438374

Split Complementary

Split-complementary colors differ from the complementary color scheme. The scheme consists of three colors, the original color and two neighbors of the complement color.



4288924894



4293311674



4289056706

Square

The Square scheme is like the rectangle color scheme, but the four colors are evenly spaced on the color wheel.



4293311674



4291152298



4288663250



4291150817

Rectangle

The Rectangle color scheme consists of four colors that form a rectangle on the color wheel.



4293311674



4292461225



4288663250



4289514210

Sweetspot

The Sweet Spot groups the original color and five complimentary colors.



4293311674



4294963440



4293311205



4286609271



4278190080



4286611584

Same Dimension

The Same Dimension uses a secret algorithm to generate beautiful new colors.



4293311674



4294952900



4293317050



4285753447



4289923072



4281532928

Inverse Universe

The Inverse Universe completely reimagines the original color for something new.



4290438374



4291099903



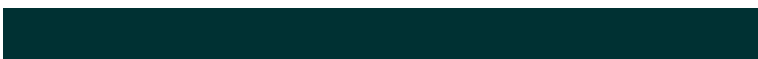
4290432998



4284969587



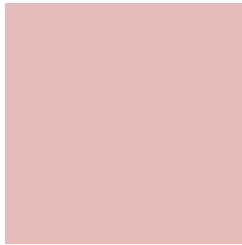
4278233779



4278202675

Previews

White Background



This preview shows how the Android color 4293311674 looks on a white background.

Color Contrast Check

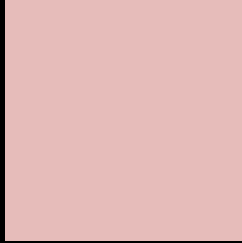
Large Text (above 18pt) WCAG AA × Fail

Any Text WCAG AA × Fail

Large Text (above 18pt) WCAG AAA × Fail

Any Text WCAG AAA × Fail

Black Background



This preview shows how the Android color 4293311674 looks on a black background.

Color Contrast Check

Large Text (above 18pt) WCAG AA ✓ Pass

Any Text WCAG AA ✓ Pass

Large Text (above 18pt) WCAG AAA ✓ Pass

Any Text WCAG AAA ✓ Pass

If you want to check with other color combinations, try the [Color Contrast Checker](#).

Android 4293311674 Background



This preview shows how black text looks on a background with the Android color 4293311674.



This preview shows how white text looks on a background with the Android color 4293311674.

Color Blindness Simulation

Color vision deficiency is a very complex topic, and I could not describe the different causes any better than Wikipedia does, so if you want to learn more, you should check out their [article about color blindness](#).


Dichromacy



Original Color
4293311674

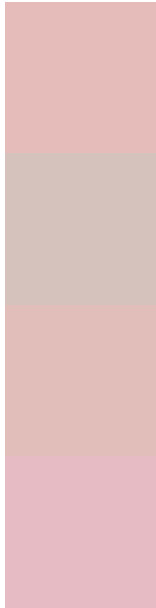
Protanopia
4291544511

Deuteranopia
4292788153



Tritanopia
4293442248

Trichromacy



Original Color
4293311674

Protanomaly
4292199101

Deuteranomaly
4292984505

Tritanomaly
4293376963

Monochromacy



Original Color
4293311674

Achromatopsia
4291348680

Achromatomaly
4292068547

CSS Examples

Text

The CSS property to change the color of the text to Android 4293311674 is called "color". The color property can be set on classes, ids or directly on the HTML element.

This example shows how text in the color `rgb(230, 188, 186)` looks like.

```
.text, #text, p{  
    color:rgb(230, 188, 186)  
}
```

If you want to add a text shadow in that color use the text-shadow property, you can generate a text shadow directly with our [CSS Text Shadow Generator](#).

Here you see how black text with a 4 pixel rgb(230, 188, 186) colored shadow looks like.

```
.shadow{ text-shadow: 4px 4px 2px rgb(230, 188, 186) }
```

Border

The CSS property to change the border of an element to Android 4293311674 is called "border". The border property can be set on classes, ids or directly on the HTML element.

This example shows the color as border, it can be applied via the CSS property "border" or "border-color".

```
.border, #border, table{ border:4px solid rgb(230, 188, 186) }
```

If only the border color should be changed use the property `border-color`.

```
.border{ border-color:rgb(230, 188, 186) }
```

If you want to add a box shadow in that color use:

Here you see how a box with a 4 pixel `rgb(230, 188, 186)` colored shadow looks like.

```
.boxshadow{ -moz-box-shadow:4px 4px 4px  
4px rgb(230, 188, 186); -webkit-box-  
shadow:4px 4px 4px 4px rgb(230, 188, 186);  
box-shadow:4px 4px 4px 4px rgb(230, 188,  
186) }
```

Background

The CSS property to change the background color of an element to Android 4293311674 is called "background". The background property can be set on classes, ids or directly on the HTML element.

```
.background, #background, body{  
background: rgb(230, 188, 186) }
```

If only the background color should be changed can be used:

```
.background{ background-color: rgb(230,  
188, 186) }
```

This example shows the color as background, it is applied via the CSS property "background".

To optimize and compress your CSS code, you can use our [online CSS compressor and optimizer](#) based on csstidy. If you want to create a linear or radial gradient as background or border, check our [CSS Gradient Generator](#).

Hey! You found this booklet interesting? Support Converting Colors with the new Membership Option!

The pro membership hides all ads, plus gives you double the colors in the color bucket, and more awesome pro features!

[Learn more, Memberships starting at \\$2.50/m!](#)

**Follow me
on Twitter!**

@ConvertingColor