

# Converting Colors

Android(4293313722)

Have a look what the booklet for  
Android(4293313722) contains.

<b>Android(4293313722)</b> .....	3
<b><i>Conversions</i></b> .....	4
<b><i>Details</i></b> .....	6
<b><i>Harmonies</i></b> .....	11
<b><i>Previews</i></b> .....	23
<b><i>Color Blindness Simulation</i></b> .....	26
<b><i>CSS Examples</i></b> .....	29

# **Color**

**Android(4293313722)**

# Conversions

## Conversions Part 1

Format	Color
Hex	E6C4BA
RGB	230, 196, 186
RGB Percent	90%, 77%, 73%
CMY	0.0980, 0.2314, 0.2706
CMYK	0.00, 0.15, 0.19, 0.10
HSL	14°, 47%, 82%
HSV	14°, 19%, 90%
XYZ	61.2360, 59.8480, 54.7787
YIQ	205.0260, 23.4740, 4.0980

# Conversions

## Conversions Part 2

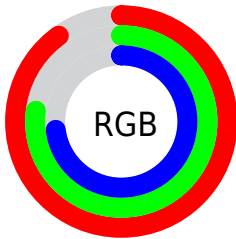
Format	Color
<a href="#">RYB</a>	<a href="#">230, 199, 186</a>
Decimal	<a href="#">15123642</a>
CIELab	<a href="#">81.76, 10.48, 9.48</a>
CIELCh	<a href="#">82, 14.132, 42.113</a>
Yxy	<a href="#">59.8480, 0.3482, 0.3403</a>
Android (android.graphics.Color)	<a href="#">4293313722</a> ( <a href="#">0xFFE6C4BA</a> )
YUV	<a href="#">205.0260, -9.3798, 21.9022</a>
Hunter-Lab	<a href="#">77.3615, 5.9102, 12.1705</a>

# Details

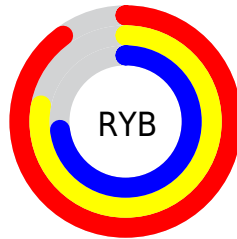
The Android color `4293313722` is a light color, and the websafe version is hex `FFCCCC`. A complement of this color would be `4290436326`, and the grayscale version is `4291677645`.

A 20% lighter version of the original color is `4294966770`, and `4289629829` is the 20% darker color. If you saturate the color by 10%, you get `4293309091`, and if you desaturate by 10%, it is `4293318353`.

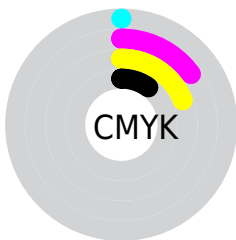
# Distribution



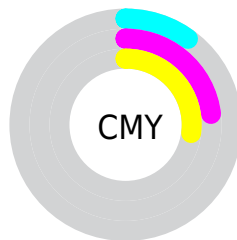
- Red (90%)
- Green (77%)
- Blue (73%)



- Red (90%)
- Yellow (78%)
- Blue (73%)



- Cyan (0%)
- Magenta (15%)
- Yellow (19%)
- Black (10%)



- Cyan (10%)
- Magenta (23%)
- Yellow (27%)

# Brightness & Saturation Gradients

These gradients show how the Android color 4293313722 changes by changing the brightness by 10 percent. The first figure shows a shift by +10% for each color and the second figure -10%.

Similar to the brightness gradients but the following saturation gradients show a change of the Android color 4293313722 by changing the saturation by 10% instead.



 4293313722

 4293313722

4294967295

 4291471775

 4294966770

 4289629829

 4287853932

 4286143571

 4284499004

 4282854951

 4281342226

 4280025088

 4278190080

 4293313722

 4293313722

 4293309091

 4293318353

 4293304460

 4293322984

 4293300085

 4293327359

 4293295454

 4293328895

 4293290823

 4293286192

 4293281817

 4293277186

 4293276672

# Harmonies

## Analogous

The Analogous color harmony consists of three colors that are next to each other on the color wheel.



4293378758



4293313722



4292790450

# Triad

The Triadic color harmony groups three colors that are evenly spaced from another and form a triangle on the color wheel.



4293313722



4289974979



4291087333

# Complementary

The Complementary color scheme is a pair of colors which are on the opposite of each other on the color wheel.



4293313722



4290436326

# Split Complementary

Split-complementary colors differ from the complementary color scheme. The scheme consists of three colors, the original color and two neighbors of the complement color.



4290039780



4293313722



4289450960

# Square

The Square scheme is like the rectangle color scheme, but the four colors are evenly spaced on the color wheel.



4293313722



4290891959



4289450716



4292134623

# Rectangle

The Rectangle color scheme consists of four colors that form a rectangle on the color wheel.



4293313722



4292201393



4289450716



4290694373



# Sweetspot

The Sweet Spot groups the original color and five complimentary colors.



4293313722



4294964208



4293311196



4286609783



4278190080



4286611584



# Same Dimension

The Same Dimension uses a secret algorithm to generate beautiful new colors.



4293313722



4294955716



4293319354



4285753959



4289931520



4281535488

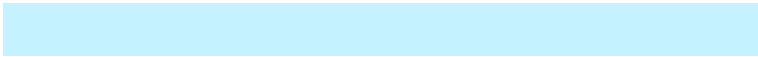


# Inverse Universe

The Inverse Universe completely reimagines the original color for something new.



4290436326



4291097343



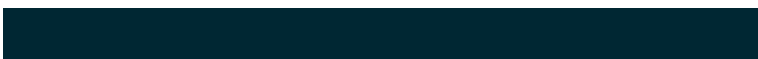
4290430694



4284969075



4278225587

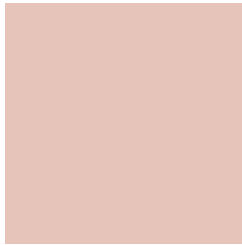


4278200115



# Previews

## White Background



This preview shows how the Android color 4293313722 looks on a white background.

## Color Contrast Check

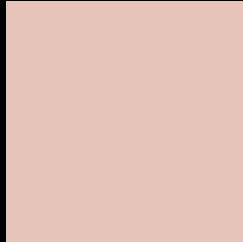
Large Text (above 18pt) WCAG AA × Fail

Any Text WCAG AA × Fail

Large Text (above 18pt) WCAG AAA × Fail

Any Text WCAG AAA × Fail

# Black Background



This preview shows how the Android color 4293313722 looks on a black background.

## Color Contrast Check

Large Text (above 18pt) WCAG AA ✓ Pass

Any Text WCAG AA ✓ Pass

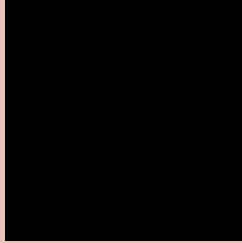
Large Text (above 18pt) WCAG AAA ✓ Pass

Any Text WCAG AAA ✓ Pass

If you want to check with other color combinations, try the [Color Contrast Checker](#).



# Android 4293313722 Background



This preview shows how black text looks on a background with the Android color 4293313722.





This preview shows how white text looks on a background with the Android color 4293313722.

# Color Blindness Simulation

Color vision deficiency is a very complex topic, and I could not describe the different causes any better than Wikipedia does, so if you want to learn more, you should check out their [article about color blindness](#).

## Dichromacy

	<b>Original Color</b> 4293313722
	<b>Protanopia</b> 4292004798
	<b>Deuteranopia</b> 4293248186



**Tritanopia**  
4293509584

# Trichromacy



**Original Color**  
4293313722

**Protanomaly**  
4292462781

**Deuteranomaly**  
4293248186

**Tritanomaly**  
4293444296

# Monochromacy



**Original Color**  
4293313722

**Achromatopsia**  
4291677645

**Achromatomaly**  
4292266694

# CSS Examples

## Text

The CSS property to change the color of the text to Android 4293313722 is called "color". The color property can be set on classes, ids or directly on the HTML element.

This example shows how text in the color `rgb(230, 196, 186)` looks like.

```
.text, #text, p{  
    color:rgb(230, 196, 186)  
}
```

If you want to add a text shadow in that color use the text-shadow property, you can generate a text shadow directly with our [CSS Text Shadow Generator](#).

Here you see how black text with a 4 pixel rgb(230, 196, 186) colored shadow looks like.

```
.shadow{ text-shadow: 4px 4px 2px rgb(230, 196, 186) }
```

## Border

The CSS property to change the border of an element to Android 4293313722 is called "border". The border property can be set on classes, ids or directly on the HTML element.

This example shows the color as border, it can be applied via the CSS property "border" or "border-color".

```
.border, #border, table{ border:4px solid rgb(230, 196, 186) }
```

If only the border color should be changed use the property `border-color`.

```
.border{ border-color:rgb(230, 196, 186) }
```

If you want to add a box shadow in that color use:

Here you see how a box with a 4 pixel `rgb(230, 196, 186)` colored shadow looks like.

```
.boxshadow{ -moz-box-shadow:4px 4px 4px  
4px rgb(230, 196, 186); -webkit-box-  
shadow:4px 4px 4px 4px rgb(230, 196, 186);  
box-shadow:4px 4px 4px 4px rgb(230, 196,  
186) }
```

# Background

The CSS property to change the background color of an element to Android 4293313722 is called "background". The background property can be set on classes, ids or directly on the HTML element.

```
.background, #background, body{  
background: rgb(230, 196, 186) }
```

If only the background color should be changed can be used:

```
.background{ background-color: rgb(230,  
196, 186) }
```

This example shows the color as background, it is applied via the CSS property "background".

To optimize and compress your CSS code, you can use our [online CSS compressor and optimizer](#) based on csstidy. If you want to create a linear or radial gradient as background or border, check our [CSS Gradient Generator](#).



Hey! You found this booklet interesting? Support Converting Colors with the new Membership Option!

The pro membership hides all ads, plus gives you double the colors in the color bucket, and more awesome pro features!

**[Learn more, Memberships starting at \\$2.50/m!](#)**

**Follow me  
on Twitter!**

@ConvertingColor