

# Converting Colors

Android(4293313988)

Have a look what the booklet for  
Android(4293313988) contains.

<b>Android(4293313988)</b> .....	3
<i><b>Conversions</b></i> .....	4
<i><b>Details</b></i> .....	6
<i><b>Harmonies</b></i> .....	11
<i><b>Previews</b></i> .....	23
<i><b>Color Blindness Simulation</b></i> .....	26
<i><b>CSS Examples</b></i> .....	29

# **Color**

**Android(4293313988)**

# Conversions

## Conversions Part 1

<b>Format</b>	<b>Color</b>
Hex	E6C5C4
RGB	230, 197, 196
RGB Percent	90%, 77%, 77%
CMY	0.0980, 0.2275, 0.2314
CMYK	0.00, 0.14, 0.15, 0.10
HSL	2°, 40%, 84%
HSV	2°, 15%, 90%
XYZ	62.5632, 60.7410, 60.6513
YIQ	206.7530, 19.9890, 6.6850

# Conversions

## Conversions Part 2

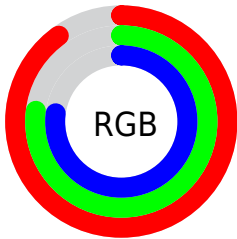
Format	Color
<a href="#">RYB</a>	<a href="#">230, 197, 196</a>
Decimal	<a href="#">15123908</a>
CIELab	<a href="#">82.24, 11.50, 4.82</a>
CIElCh	<a href="#">82, 12.464, 22.742</a>
Yxy	<a href="#">60.7410, 0.3401, 0.3302</a>
Android (android.graphics.Color)	<a href="#">4293313988</a> ( <a href="#">0xFFE6C5C4</a> )
YUV	<a href="#">206.7530, -5.3012, 20.3876</a>
Hunter-Lab	<a href="#">77.9365, 6.9011, 8.4153</a>

# Details

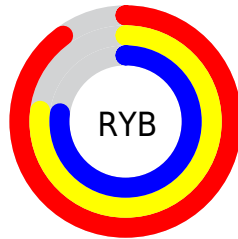
The Android color `4293313988` is a light color, and the websafe version is hex `FFCCCC`. A complement of this color would be `4291093990`, and the grayscale version is `4291809231`.

A 20% lighter version of the original color is `4294967037`, and `4289630094` is the 20% darker color. If you saturate the color by 10%, you get `4293308333`, and if you desaturate by 10%, it is `4293319643`.

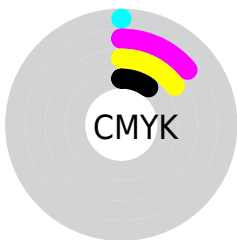
# Distribution



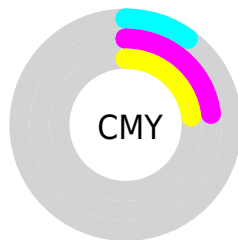
- Red (90%)
- Green (77%)
- Blue (77%)



- Red (90%)
- Yellow (77%)
- Blue (77%)



- Cyan (0%)
- Magenta (14%)
- Yellow (15%)
- Black (10%)



- Cyan (10%)
- Magenta (23%)
- Yellow (23%)

# Brightness & Saturation Gradients

These gradients show how the Android color 4293313988 changes by changing the brightness by 10 percent. The first figure shows a shift by +10% for each color and the second figure -10%.

Similar to the brightness gradients but the following saturation gradients show a change of the Android color 4293313988 by changing the saturation by 10% instead.





4293313988



4293313988

4294967295



4291472041

4294967037



4289630094



4287854197



4286143836



4284499269



4282920750



4281408026



4280156160



4278190080

 4293313988

 4293313988

 4293308333

 4293319643

 4293302422

 4293325554

 4293296767

 4293328895

 4293291112

 4293285201

 4293279546

 4293273891

 4293267980

 4293265152

# Harmonies

## Analogous

The Analogous color harmony consists of three colors that are next to each other on the color wheel.



4293117392



4293313988



4293052346

# Triad

The Triadic color harmony groups three colors that are evenly spaced from another and form a triangle on the color wheel.



4293313988



4290761406



4290629347

# Complementary

The Complementary color scheme is a pair of colors which are on the opposite of each other on the color wheel.



4293313988



4291093990

# Split Complementary

Split-complementary colors differ from the complementary color scheme. The scheme consists of three colors, the original color and two neighbors of the complement color.



4289909471



4293313988



4290040777

# Square

The Square scheme is like the rectangle color scheme, but the four colors are evenly spaced on the color wheel.



4293313988



4291612599



4289713109



4291546082

# Rectangle

The Rectangle color scheme consists of four colors that form a rectangle on the color wheel.



4293313988



4292725175



4289713109



4290367715



# Sweetspot

The Sweet Spot groups the original color and five complimentary colors.



4293313988



4294964725



4293313765



4286609785



4278190080



4286611584



# Same Dimension

The Same Dimension uses a secret algorithm to generate beautiful new colors.



4293313988



4294955729



4293318340



4285753447



4289922304



4281532672



# Inverse Universe

The Inverse Universe completely reimagines the original color for something new.



4291093990



4291952383



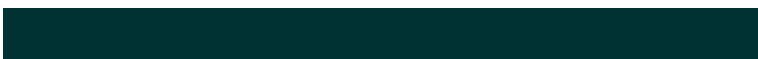
4291089638



4284969587



4278234547

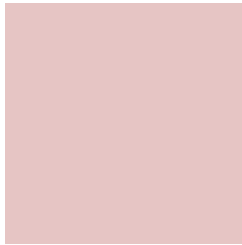


4278202931



# Previews

## White Background



This preview shows how the Android color 4293313988 looks on a white background.

## Color Contrast Check

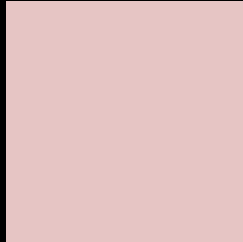
Large Text (above 18pt) WCAG AA × Fail

Any Text WCAG AA × Fail

Large Text (above 18pt) WCAG AAA × Fail

Any Text WCAG AAA × Fail

# Black Background



This preview shows how the Android color 4293313988 looks on a black background.

## Color Contrast Check

Large Text (above 18pt) WCAG AA ✓ Pass

Any Text WCAG AA ✓ Pass

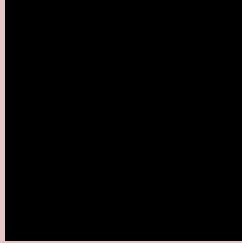
Large Text (above 18pt) WCAG AAA ✓ Pass

Any Text WCAG AAA ✓ Pass

If you want to check with other color combinations, try the [Color Contrast Checker](#).



# Android 4293313988 Background



This preview shows how black text looks on a background with the Android color 4293313988.




This preview shows how white text looks on a background with the Android color 4293313988.

# Color Blindness Simulation

Color vision deficiency is a very complex topic, and I could not describe the different causes any better than Wikipedia does, so if you want to learn more, you should check out their [article about color blindness](#).

## Dichromacy

	<b>Original Color</b> <a href="#">4293313988</a>
	<b>Protanopia</b> <a href="#">4291939528</a>
	<b>Deuteranopia</b> <a href="#">4293183172</a>



**Tritanopia**  
4293444562

# Trichromacy



**Original Color**  
4293313988

**Protanomaly**  
4292463047

**Deuteranomaly**  
4293248708

**Tritanomaly**  
4293379277

# Monochromacy



**Original Color**  
4293313988

**Achromatopsia**  
4291809231

**Achromatomaly**  
4292332491

# CSS Examples

## Text

The CSS property to change the color of the text to Android 4293313988 is called "color". The color property can be set on classes, ids or directly on the HTML element.

This example shows how text in the color `rgb(230, 197, 196)` looks like.

```
.text, #text, p{  
    color:rgb(230, 197, 196)  
}
```

If you want to add a text shadow in that color use the text-shadow property, you can generate a text shadow directly with our [CSS Text Shadow Generator](#).

Here you see how black text with a 4 pixel rgb(230, 197, 196) colored shadow looks like.

```
.shadow{ text-shadow: 4px 4px 2px rgb(230, 197, 196) }
```

## Border

The CSS property to change the border of an element to Android 4293313988 is called "border". The border property can be set on classes, ids or directly on the HTML element.

This example shows the color as border, it can be applied via the CSS property "border" or "border-color".

```
.border, #border, table{ border:4px solid rgb(230, 197, 196) }
```

If only the border color should be changed use the property `border-color`.

```
.border{ border-color:rgb(230, 197, 196) }
```

If you want to add a box shadow in that color use:

Here you see how a box with a 4 pixel `rgb(230, 197, 196)` colored shadow looks like.

```
.boxshadow{ -moz-box-shadow:4px 4px 4px 4px rgb(230, 197, 196); -webkit-box-shadow:4px 4px 4px 4px rgb(230, 197, 196); box-shadow:4px 4px 4px 4px rgb(230, 197, 196) }
```

# Background

The CSS property to change the background color of an element to Android 4293313988 is called "background". The background property can be set on classes, ids or directly on the HTML element.

```
.background, #background, body{  
background: rgb(230, 197, 196) }
```

If only the background color should be changed can be used:

```
.background{ background-color: rgb(230,  
197, 196) }
```

This example shows the color as background, it is applied via the CSS property "background".

To optimize and compress your CSS code, you can use our [online CSS compressor and optimizer](#) based on csstidy. If you want to create a linear or radial gradient as background or border, check our [CSS Gradient Generator](#).



Hey! You found this booklet interesting? Support Converting Colors with the new Membership Option!

The pro membership hides all ads, plus gives you double the colors in the color bucket, and more awesome pro features!

**[Learn more, Memberships starting at \\$2.50/m!](#)**

**Follow me  
on Twitter!**

@ConvertingColor