

Converting Colors

Android(4293315273)

Have a look what the booklet for
Android(4293315273) contains.

Android(4293315273)	3
<i>Conversions</i>	4
<i>Details</i>	6
<i>Harmonies</i>	11
<i>Previews</i>	23
<i>Color Blindness Simulation</i>	26
<i>CSS Examples</i>	29

Color

Android(4293315273)

Conversions

Conversions Part 1

Format	Color
Hex	E6CAC9
RGB	230, 202, 201
RGB Percent	90%, 79%, 79%
CMY	0.0980, 0.2078, 0.2118
CMYK	0.00, 0.12, 0.13, 0.10
HSL	2°, 37%, 85%
HSV	2°, 13%, 90%
XYZ	64.2963, 63.2811, 64.0840
YIQ	210.2580, 17.0090, 5.6250

Conversions

Conversions Part 2

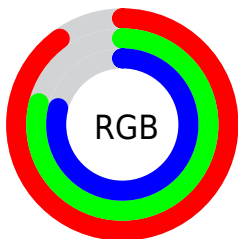
Format	Color
R _Y B	230, 202, 201
Decimal	15125193
CIE Lab	83.59, 9.65, 4.10
CIE LCh	84, 10.487, 23.011
Yxy	63.2811, 0.3355, 0.3302
Android (android.graphics.Color)	4293315273 (0xFFE6CAC9)
YUV	210.2580, -4.5642, 17.3137
Hunter-Lab	79.5494, 5.0622, 7.9213

Details

The Android color `4293315273` is a light color, and the websafe version is hex `FFCCCC`. A complement of this color would be `4291421670`, and the grayscale version is `4292006610`.

A 20% lighter version of the original color is `4294967295`, and `4289631379` is the 20% darker color. If you saturate the color by 10%, you get `4293309618`, and if you desaturate by 10%, it is `4293320928`.

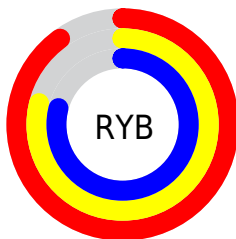
Distribution



Red (90%)

Green (79%)

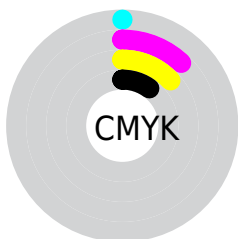
Blue (79%)



Red (90%)

Yellow (79%)

Blue (79%)

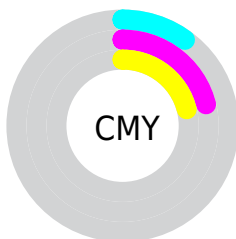


Cyan (0%)

Magenta (12%)

Yellow (13%)

Black (10%)



Cyan (10%)

Magenta (21%)

Yellow (21%)

Brightness & Saturation Gradients

These gradients show how the Android color 4293315273 changes by changing the brightness by 10 percent. The first figure shows a shift by +10% for each color and the second figure -10%.

Similar to the brightness gradients but the following saturation gradients show a change of the Android color 4293315273 by changing the saturation by 10% instead.

 4293315273

 4293315273

4294967295

 4291473326

 4289631379

 4287855225

 4286144865

 4284500297

 4282921778

 4281409053

 4280157444

 4278190080

 4293315273

 4293315273

 4293309618

 4293320928

 4293303963

 4293326583

 4293298052

 4293328895

 4293292397

 4293286742

 4293281087

 4293275432

 4293269521

 4293265408

Harmonies

Analogous

The Analogous color harmony consists of three colors that are next to each other on the color wheel.



4293118675



4293315273



4293119169

Triad

The Triadic color harmony groups three colors that are evenly spaced from another and form a triangle on the color wheel.



4293315273



4291155396



4291089124

Complementary

The Complementary color scheme is a pair of colors which are on the opposite of each other on the color wheel.



4293315273



4291421670

Split Complementary

Split-complementary colors differ from the complementary color scheme. The scheme consists of three colors, the original color and two neighbors of the complement color.



4290500064



4293315273



4290565838

Square

The Square scheme is like the rectangle color scheme, but the four colors are evenly spaced on the color wheel.



4293315273



4291875518



4290303704



4291874786

Rectangle

The Rectangle color scheme consists of four colors that form a rectangle on the color wheel.



4293315273



4292791998



4290303704



4290827235

Sweetspot

The Sweet Spot groups the original color and five complimentary colors.



4293315273



4294964725



4293315045



4286609785



4278190080



4286611584

Same Dimension

The Same Dimension uses a secret algorithm to generate beautiful new colors.



4293315273



4294957785



4293318857



4285753447



4289922560



4281532928

Inverse Universe

The Inverse Universe completely reimagines the original color for something new.



4291421670



4292476671



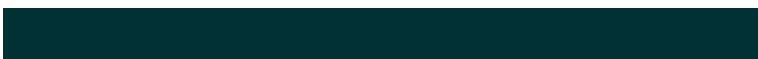
4291418086



4284969587



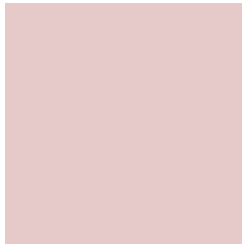
4278234291



4278202675

Previews

White Background



This preview shows how the Android color 4293315273 looks on a white background.

Color Contrast Check

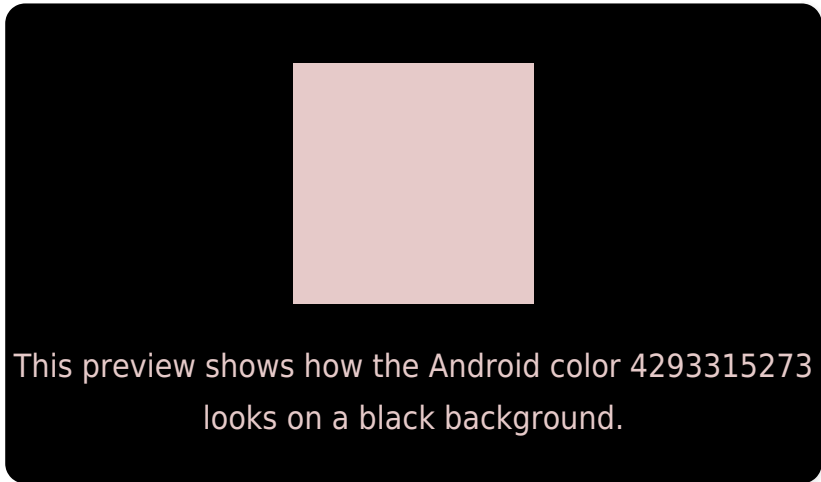
Large Text (above 18pt) WCAG AA × Fail

Any Text WCAG AA × Fail

Large Text (above 18pt) WCAG AAA × Fail

Any Text WCAG AAA × Fail

Black Background



Color Contrast Check

Large Text (above 18pt) WCAG AA ✓ Pass

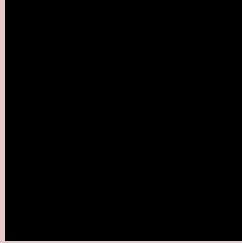
Any Text WCAG AA ✓ Pass

Large Text (above 18pt) WCAG AAA ✓ Pass

Any Text WCAG AAA ✓ Pass

If you want to check with other color combinations, try the [Color Contrast Checker](#).

Android 4293315273 Background



This preview shows how black text looks on a background with the Android color 4293315273.




This preview shows how white text looks on a background with the Android color 4293315273.

Color Blindness Simulation

Color vision deficiency is a very complex topic, and I could not describe the different causes any better than Wikipedia does, so if you want to learn more, you should check out their [article about color blindness](#).

Dichromacy





Tritanopia
4293445847

Trichromacy



Original Color
4293315273

Protanomaly
4292595403

Deuteranomaly
4293380809

Tritanomaly
4293380562

Monochromacy



Original Color
4293315273

Achromatopsia
4292006610

Achromatomaly
4292464591

CSS Examples

Text

The CSS property to change the color of the text to Android 4293315273 is called "color". The color property can be set on classes, ids or directly on the HTML element.

This example shows how text in the color `rgb(230, 202, 201)` looks like.

```
.text, #text, p{  
    color:rgb(230, 202, 201)  
}
```

If you want to add a text shadow in that color use the text-shadow property, you can generate a text shadow directly with our [CSS Text Shadow Generator](#).

Here you see how black text with a 4 pixel rgb(230, 202, 201) colored shadow looks like.

```
.shadow{ text-shadow: 4px 4px 2px rgb(230, 202, 201) }
```

Border

The CSS property to change the border of an element to Android 4293315273 is called "border". The border property can be set on classes, ids or directly on the HTML element.

This example shows the color as border, it can be applied via the CSS property "border" or "border-color".

```
.border, #border, table{ border:4px solid rgb(230, 202, 201) }
```

If only the border color should be changed use the property border-color.

```
.border{ border-color:rgb(230, 202, 201) }
```

If you want to add a box shadow in that color use:

Here you see how a box with a 4 pixel rgb(230, 202, 201) colored shadow looks like.

```
.boxshadow{ -moz-box-shadow:4px 4px 4px  
4px rgb(230, 202, 201); -webkit-box-  
shadow:4px 4px 4px 4px rgb(230, 202, 201);  
box-shadow:4px 4px 4px 4px rgb(230, 202,  
201) }
```

Background

The CSS property to change the background color of an element to Android 4293315273 is called "background". The background property can be set on classes, ids or directly on the HTML element.

```
.background, #background, body{  
background: rgb(230, 202, 201) }
```

If only the background color should be changed can be used:

```
.background{ background-color: rgb(230,  
202, 201) }
```

This example shows the color as background, it is applied via the CSS property "background".

To optimize and compress your CSS code, you can use our [online CSS compressor and optimizer](#) based on csstidy. If you want to create a linear or radial gradient as background or border, check our [CSS Gradient Generator](#).

Hey! You found this booklet interesting? Support Converting Colors with the new Membership Option!

The pro membership hides all ads, plus gives you double the colors in the color bucket, and more awesome pro features!

[Learn more, Memberships starting at \\$2.50/m!](#)

**Follow me
on Twitter!**

@ConvertingColor