

Converting Colors

Android(4293315784)

Have a look what the booklet for
Android(4293315784) contains.

Android(4293315784)	3
<i>Conversions</i>	4
<i>Details</i>	6
<i>Harmonies</i>	11
<i>Previews</i>	23
<i>Color Blindness Simulation</i>	26
<i>CSS Examples</i>	29

Color

Android(4293315784)

Conversions

Conversions Part 1

Format	Color
Hex	E6CCC8
RGB	230, 204, 200
RGB Percent	90%, 80%, 78%
CMY	0.0980, 0.2000, 0.2157
CMYK	0.00, 0.11, 0.13, 0.10
HSL	8°, 37%, 84%
HSV	8°, 13%, 90%
XYZ	64.6513, 64.1789, 63.6238
YIQ	211.3180, 16.7800, 4.2680

Conversions

Conversions Part 2

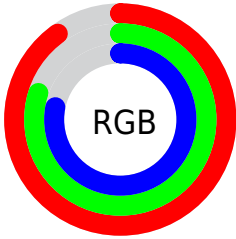
Format	Color
R _Y B	230, 205, 200
Decimal	15125704
CIE Lab	84.06, 8.44, 5.31
CIE LCh	84, 9.970, 32.179
Yxy	64.1789, 0.3359, 0.3335
Android (android.graphics.Color)	4293315784 (0xFFE6CCC8)
YUV	211.3180, -5.5798, 16.3841
Hunter-Lab	80.1117, 3.8566, 8.9907

Details

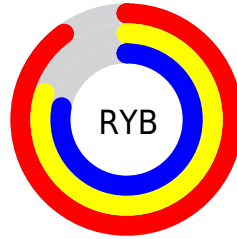
The Android color `4293315784` is a light color, and the websafe version is hex `FFCCCC`. A complement of this color would be `4291355366`, and the grayscale version is `4292072403`.

A 20% lighter version of the original color is `4294967295`, and `4289631890` is the 20% darker color. If you saturate the color by 10%, you get `4293310641`, and if you desaturate by 10%, it is `4293320927`.

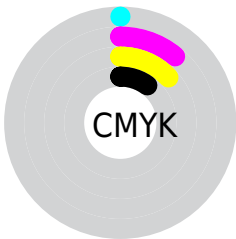
Distribution



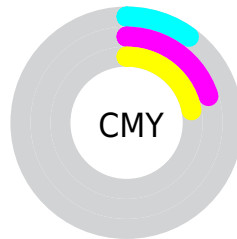
- Red (90%)
- Green (80%)
- Blue (78%)



- Red (90%)
- Yellow (80%)
- Blue (78%)



- Cyan (0%)
- Magenta (11%)
- Yellow (13%)
- Black (10%)



- Cyan (10%)
- Magenta (20%)
- Yellow (22%)

Brightness & Saturation Gradients

These gradients show how the Android color 4293315784 changes by changing the brightness by 10 percent. The first figure shows a shift by +10% for each color and the second figure -10%.

Similar to the brightness gradients but the following saturation gradients show a change of the Android color 4293315784 by changing the saturation by 10% instead.

 4293315784

 4293315784

4294967295

 4291473837

 4289631890

 4287855736

 4286210912

 4284500808

 4282922034

 4281409309

 4280158210

 4278190080

 4293315784

 4293315784

 4293310641

 4293320927

 4293305498

 4293326070

 4293300355

 4293328895

 4293295212

 4293290069

 4293284926

 4293279783

 4293274896

 4293271296

Harmonies

Analogous

The Analogous color harmony consists of three colors that are next to each other on the color wheel.



4293250001



4293315784



4293054145

Triad

The Triadic color harmony groups three colors that are evenly spaced from another and form a triangle on the color wheel.



4293315784



4291090121



4291416804

Complementary

The Complementary color scheme is a pair of colors which are on the opposite of each other on the color wheel.



4293315784



4291355366

Split Complementary

Split-complementary colors differ from the complementary color scheme. The scheme consists of three colors, the original color and two neighbors of the complement color.



4290762210



4293315784



4290566098

Square

The Square scheme is like the rectangle color scheme, but the four colors are evenly spaced on the color wheel.



4293315784



4291744962



4290500571



4292202466

Rectangle

The Rectangle color scheme consists of four colors that form a rectangle on the color wheel.



4293315784



4292661439



4290500571



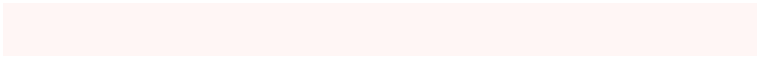
4291154916

Sweetspot

The Sweet Spot groups the original color and five complimentary colors.



4293315784



4294964981



4293314786



4286610041



4278190080



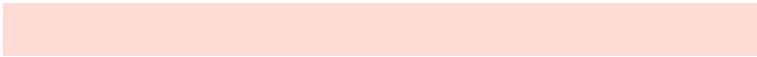
4286611584

Same Dimension

The Same Dimension uses a secret algorithm to generate beautiful new colors.



4293315784



4294958294



4293319624



4285753703



4289927168



4281534208

Inverse Universe

The Inverse Universe completely reimagines the original color for something new.



4291355366



4292279039



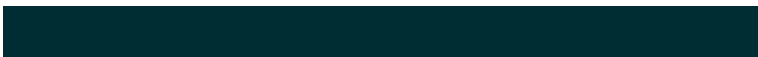
4291351526



4284969331



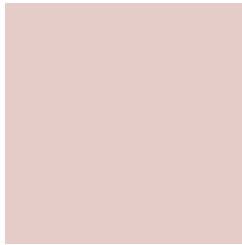
4278229939



4278201395

Previews

White Background



This preview shows how the Android color 4293315784 looks on a white background.

Color Contrast Check

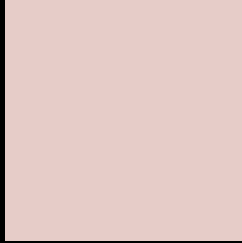
Large Text (above 18pt) WCAG AA × Fail

Any Text WCAG AA × Fail

Large Text (above 18pt) WCAG AAA × Fail

Any Text WCAG AAA × Fail

Black Background



This preview shows how the Android color 4293315784 looks on a black background.

Color Contrast Check

Large Text (above 18pt) WCAG AA ✓ Pass

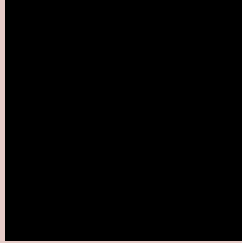
Any Text WCAG AA ✓ Pass

Large Text (above 18pt) WCAG AAA ✓ Pass

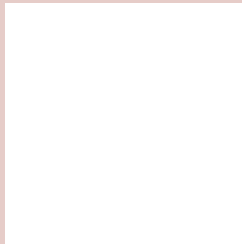
Any Text WCAG AAA ✓ Pass

If you want to check with other color combinations, try the [Color Contrast Checker](#).

Android 4293315784 Background



This preview shows how black text looks on a background with the Android color 4293315784.



This preview shows how white text looks on a background with the Android color 4293315784.

Color Blindness Simulation

Color vision deficiency is a very complex topic, and I could not describe the different causes any better than Wikipedia does, so if you want to learn more, you should check out their [article about color blindness](#).


Dichromacy



Original Color
4293315784

Protanopia
4292334027

Deuteranopia
4293577672



Tritanopia
4293446105

Trichromacy



Original Color
4293315784

Protanomaly
4292661194

Deuteranomaly
4293512136

Tritanomaly
4293380819

Monochromacy



Original Color
4293315784

Achromatopsia
4292072403

Achromatomaly
4292530383

CSS Examples

Text

The CSS property to change the color of the text to Android 4293315784 is called "color". The color property can be set on classes, ids or directly on the HTML element.

This example shows how text in the color `rgb(230, 204, 200)` looks like.

```
.text, #text, p{  
    color:rgb(230, 204, 200)  
}
```

If you want to add a text shadow in that color use the text-shadow property, you can generate a text shadow directly with our [CSS Text Shadow Generator](#).

Here you see how black text with a 4 pixel rgb(230, 204, 200) colored shadow looks like.

```
.shadow{ text-shadow: 4px 4px 2px rgb(230, 204, 200) }
```

Border

The CSS property to change the border of an element to Android 4293315784 is called "border". The border property can be set on classes, ids or directly on the HTML element.

This example shows the color as border, it can be applied via the CSS property "border" or "border-color".

```
.border, #border, table{ border:4px solid rgb(230, 204, 200) }
```

If only the border color should be changed use the property `border-color`.

```
.border{ border-color:rgb(230, 204, 200) }
```

If you want to add a box shadow in that color use:

Here you see how a box with a 4 pixel `rgb(230, 204, 200)` colored shadow looks like.

```
.boxshadow{ -moz-box-shadow:4px 4px 4px  
4px rgb(230, 204, 200); -webkit-box-  
shadow:4px 4px 4px 4px rgb(230, 204, 200);  
box-shadow:4px 4px 4px 4px rgb(230, 204,  
200) }
```

Background

The CSS property to change the background color of an element to Android 4293315784 is called "background". The background property can be set on classes, ids or directly on the HTML element.

```
.background, #background, body{  
background: rgb(230, 204, 200) }
```

If only the background color should be changed can be used:

```
.background{ background-color: rgb(230,  
204, 200) }
```

This example shows the color as background, it is applied via the CSS property "background".

To optimize and compress your CSS code, you can use our [online CSS compressor and optimizer](#) based on csstidy. If you want to create a linear or radial gradient as background or border, check our [CSS Gradient Generator](#).

Hey! You found this booklet interesting? Support Converting Colors with the new Membership Option!

The pro membership hides all ads, plus gives you double the colors in the color bucket, and more awesome pro features!

[Learn more, Memberships starting at \\$2.50/m!](#)

**Follow me
on Twitter!**

@ConvertingColor