

# Converting Colors

Android(4293315790)

Have a look what the booklet for  
Android(4293315790) contains.

<b>Android(4293315790)</b> .....	3
<b><i>Conversions</i></b> .....	4
<b><i>Details</i></b> .....	6
<b><i>Harmonies</i></b> .....	11
<b><i>Previews</i></b> .....	23
<b><i>Color Blindness Simulation</i></b> .....	26
<b><i>CSS Examples</i></b> .....	29

# **Color**

**Android(4293315790)**

# Conversions

## Conversions Part 1

<b>Format</b>	<b>Color</b>
Hex	E6CCCE
RGB	230, 204, 206
RGB Percent	90%, 80%, 81%
CMY	0.0980, 0.2000, 0.1922
CMYK	0.00, 0.11, 0.10, 0.10
HSL	355°, 34%, 85%
HSV	355°, 11%, 90%
XYZ	65.3666, 64.4650, 67.3903
YIQ	212.0020, 14.8540, 6.1340

# Conversions

## Conversions Part 2

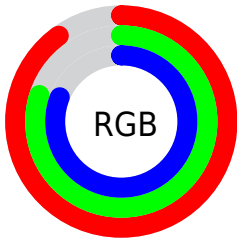
<b>Format</b>	<b>Color</b>
R <sub>Y</sub> B	230, 204, 206
Decimal	15125710
CIE Lab	84.21, 9.41, 2.33
CIE LCh	84, 9.699, 13.898
Yxy	64.4650, 0.3314, 0.3269
Android (android.graphics.Color)	4293315790 (0xFFE6CCCE)
YUV	212.0020, -2.9590, 15.7842
Hunter-Lab	80.2901, 4.8146, 6.4388

# Details

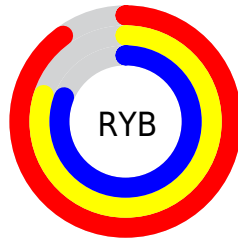
The Android color `4293315790` is a light color, and the websafe version is hex `CCCCCC`. A complement of this color would be `4291618532`, and the grayscale version is `4292138196`.

A 20% lighter version of the original color is `4294967295`, and `4289631896` is the 20% darker color. If you saturate the color by 10%, you get `4293309881`, and if you desaturate by 10%, it is `4293321699`.

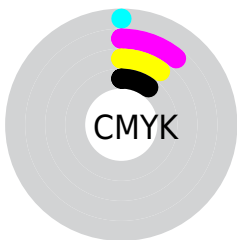
# Distribution



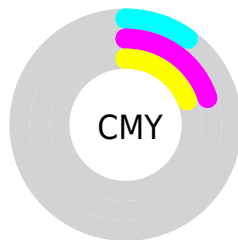
- Red (90%)
- Green (80%)
- Blue (81%)



- Red (90%)
- Yellow (80%)
- Blue (81%)



- Cyan (0%)
- Magenta (11%)
- Yellow (10%)
- Black (10%)



- Cyan (10%)
- Magenta (20%)
- Yellow (19%)

# Brightness & Saturation Gradients

These gradients show how the Android color 4293315790 changes by changing the brightness by 10 percent. The first figure shows a shift by +10% for each color and the second figure -10%.

Similar to the brightness gradients but the following saturation gradients show a change of the Android color 4293315790 by changing the saturation by 10% instead.



 4293315790

 4293315790

4294967295

 4291473843

 4289631896

 4287921278

 4286210917

 4284566349

 4282987574

 4281474849

 4280158218

 4278190080

 4293315790

 4293315790

 4293309881

 4293321699

 4293303972

 4293327608

 4293298062

 4293328895

 4293292153

 4293286244

 4293280335

 4293274425

 4293268516

 4293263378

# Harmonies

## Analogous

The Analogous color harmony consists of three colors that are next to each other on the color wheel.



4293053655



4293315790



4293250502

# Triad

The Triadic color harmony groups three colors that are evenly spaced from another and form a triangle on the color wheel.



4293315790



4291548613



4291024099

# Complementary

The Complementary color scheme is a pair of colors which are on the opposite of each other on the color wheel.



4293315790



4291618532

# Split Complementary

Split-complementary colors differ from the complementary color scheme. The scheme consists of three colors, the original color and two neighbors of the complement color.



4290631646



4293315790



4290893773

# Square

The Square scheme is like the rectangle color scheme, but the four colors are evenly spaced on the color wheel.



4293315790



4292203456



4290566358



4291744228

# Rectangle

The Rectangle color scheme consists of four colors that form a rectangle on the color wheel.



4293315790



4292988866



4290566358



4290893282



# Sweetspot

The Sweet Spot groups the original color and five complimentary colors.



4293315790



4294965240



4293184742



4286610043



4278190080



4286611584



# Same Dimension

The Same Dimension uses a secret algorithm to generate beautiful new colors.



4293315790



4294958046



4293318604



4285753192



4289921038



4281532420



# Inverse Universe

The Inverse Universe completely reimagines the original color for something new.



4293315790



4294958046



4291615718



4285753192



4289921038

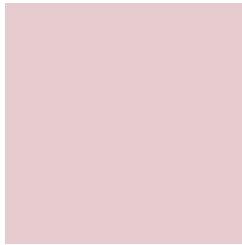


4281532420



# Previews

## White Background



This preview shows how the Android color 4293315790 looks on a white background.

## Color Contrast Check

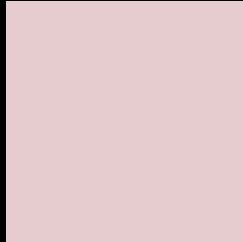
Large Text (above 18pt) WCAG AA × Fail

Any Text WCAG AA × Fail

Large Text (above 18pt) WCAG AAA × Fail

Any Text WCAG AAA × Fail

# Black Background



This preview shows how the Android color 4293315790 looks on a black background.

## Color Contrast Check

Large Text (above 18pt) WCAG AA ✓ Pass

Any Text WCAG AA ✓ Pass

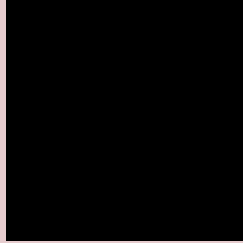
Large Text (above 18pt) WCAG AAA ✓ Pass

Any Text WCAG AAA ✓ Pass

If you want to check with other color combinations, try the [Color Contrast Checker](#).



# Android 4293315790 Background



This preview shows how black text looks on a background with the Android color 4293315790.




This preview shows how white text looks on a background with the Android color 4293315790.

# Color Blindness Simulation

Color vision deficiency is a very complex topic, and I could not describe the different causes any better than Wikipedia does, so if you want to learn more, you should check out their [article about color blindness](#).

## Dichromacy

	<b>Original Color</b> 4293315790
	<b>Protanopia</b> 4292268497
	<b>Deuteranopia</b> 4293446606



**Tritanopia**  
4293446362

# Trichromacy



**Original Color**  
4293315790

**Protanomaly**  
4292661200

**Deuteranomaly**  
4293381070

**Tritanomaly**  
4293381078

# Monochromacy



**Original Color**  
4293315790

**Achromatopsia**  
4292138196

**Achromatomaly**  
4292596178

# CSS Examples

## Text

The CSS property to change the color of the text to Android 4293315790 is called "color". The color property can be set on classes, ids or directly on the HTML element.

This example shows how text in the color `rgb(230, 204, 206)` looks like.

```
.text, #text, p{  
    color:rgb(230, 204, 206)  
}
```

If you want to add a text shadow in that color use the text-shadow property, you can generate a text shadow directly with our [CSS Text Shadow Generator](#).

Here you see how black text with a 4 pixel rgb(230, 204, 206) colored shadow looks like.

```
.shadow{ text-shadow: 4px 4px 2px rgb(230, 204, 206) }
```

## Border

The CSS property to change the border of an element to Android 4293315790 is called "border". The border property can be set on classes, ids or directly on the HTML element.

This example shows the color as border, it can be applied via the CSS property "border" or "border-color".

```
.border, #border, table{ border:4px solid rgb(230, 204, 206) }
```

If only the border color should be changed use the property `border-color`.

```
.border{ border-color:rgb(230, 204, 206) }
```

If you want to add a box shadow in that color use:

Here you see how a box with a 4 pixel `rgb(230, 204, 206)` colored shadow looks like.

```
.boxshadow{ -moz-box-shadow:4px 4px 4px  
4px rgb(230, 204, 206); -webkit-box-  
shadow:4px 4px 4px 4px rgb(230, 204, 206);  
box-shadow:4px 4px 4px 4px rgb(230, 204,  
206) }
```

# Background

The CSS property to change the background color of an element to Android 4293315790 is called "background". The background property can be set on classes, ids or directly on the HTML element.

```
.background, #background, body{  
background: rgb(230, 204, 206) }
```

If only the background color should be changed can be used:

```
.background{ background-color: rgb(230,  
204, 206) }
```

This example shows the color as background, it is applied via the CSS property "background".

To optimize and compress your CSS code, you can use our [online CSS compressor and optimizer](#) based on csstidy. If you want to create a linear or radial gradient as background or border, check our [CSS Gradient Generator](#).



Hey! You found this booklet interesting? Support Converting Colors with the new Membership Option!

The pro membership hides all ads, plus gives you double the colors in the color bucket, and more awesome pro features!

**[Learn more, Memberships starting at \\$2.50/m!](#)**

**Follow me  
on Twitter!**

@ConvertingColor