

Converting Colors

Android(4293339491)

Have a look what the booklet for
Android(4293339491) contains.

Android(4293339491)	3
<i>Conversions</i>	4
<i>Details</i>	6
<i>Harmonies</i>	11
<i>Previews</i>	23
<i>Color Blindness Simulation</i>	26
<i>CSS Examples</i>	29

Color

Android(4293339491)

Conversions

Conversions Part 1

Format	Color
Hex	E72963
RGB	231, 41, 99
RGB Percent	91%, 16%, 39%
CMY	0.0941, 0.8392, 0.6118
CMYK	0.00, 0.82, 0.57, 0.09
HSL	342°, 80%, 53%
HSV	342°, 82%, 91%
XYZ	36.0001, 19.4757, 13.6661
YIQ	104.4220, 94.6220, 58.3180

Conversions

Conversions Part 2

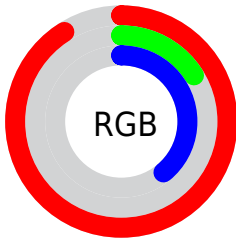
Format	Color
RYB	231, 41, 99
Decimal	15149411
CIELab	51.24, 71.94, 15.79
CIELCh	51, 73.653, 12.382
Yxy	19.4757, 0.5207, 0.2817
Android (android.graphics.Color)	4293339491 (0xFFE72963)
YUV	104.4220, -2.6730, 111.0089
Hunter-Lab	44.1312, 68.3818, 12.5315

Details

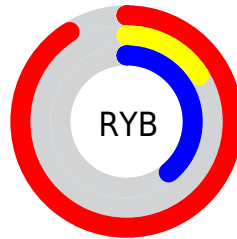
The Android color **4293339491** is a dark color, and the websafe version is hex **FF3366**. The color can be described as dark washed rose. A complement of this color would be **4280936365**, and the grayscale version is **4285032552**.

A 20% lighter version of the original color is **4294929557**, and **4289200181** is the 20% darker color. If you saturate the color by 10%, you get **4293333587**, and if you desaturate by 10%, it is **4293345395**.

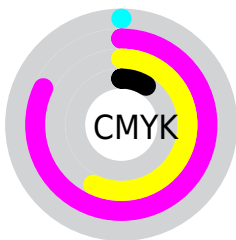
Distribution



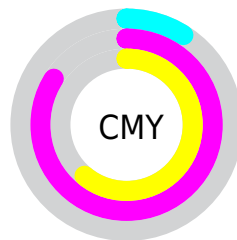
- Red (91%)
- Green (16%)
- Blue (39%)



- Red (91%)
- Yellow (16%)
- Blue (39%)



- Cyan (0%)
- Magenta (82%)
- Yellow (57%)
- Black (9%)



- Cyan (9%)
- Magenta (84%)
- Yellow (61%)

Brightness & Saturation Gradients

These gradients show how the Android color 4293339491 changes by changing the brightness by 10 percent. The first figure shows a shift by +10% for each color and the second figure -10%.

Similar to the brightness gradients but the following saturation gradients show a change of the Android color 4293339491 by changing the saturation by 10% instead.



4293339491



4293339491

4294967295



4291231819



4294929557



4289200181



4294937264



4287168545



4294944715



4285202441



4294952423



4283236355



4294959871



4281204738



4278190080



4293339491



4293339491



4293333587



4293345395

 4293328967

 4293351299

 4293357203

 4293363107

 4293369267

 4293375171

 4293381075

 4293386979

 4293392883

Harmonies

Analogous

The Analogous color harmony consists of three colors that are next to each other on the color wheel.



4292228770



4293339491



4292364582

Triad

The Triadic color harmony groups three colors that are evenly spaced from another and form a triangle on the color wheel.



4293339491



4281175296



4278226163

Complementary

The Complementary color scheme is a pair of colors which are on the opposite of each other on the color wheel.



4293339491



4280936365

Split Complementary

Split-complementary colors differ from the complementary color scheme. The scheme consists of three colors, the original color and two neighbors of the complement color.



4278228174



4293339491



4278227793

Square

The Square scheme is like the rectangle color scheme, but the four colors are evenly spaced on the color wheel.



4293339491



4286349312



4278228371



4278221303

Rectangle

The Rectangle color scheme consists of four colors that form a rectangle on the color wheel.



4293339491



4290797312



4278228371



4278226922

Sweetspot

The Sweet Spot groups the original color and five complimentary colors.



4293339491



4294950867



4289407463



4286601573



4278190080



4286611584

Same Dimension

The Same Dimension uses a secret algorithm to generate beautiful new colors.



4293339491



4294902608



4293348393



4285753195



4289921078



4281532432

Inverse Universe

The Inverse Universe completely reimagines the original color for something new.



4293339491



4294902608



4280927463



4285753195



4289921078



4281532432

Previews

White Background



This preview shows how the Android color 4293339491 looks on a white background.

Color Contrast Check

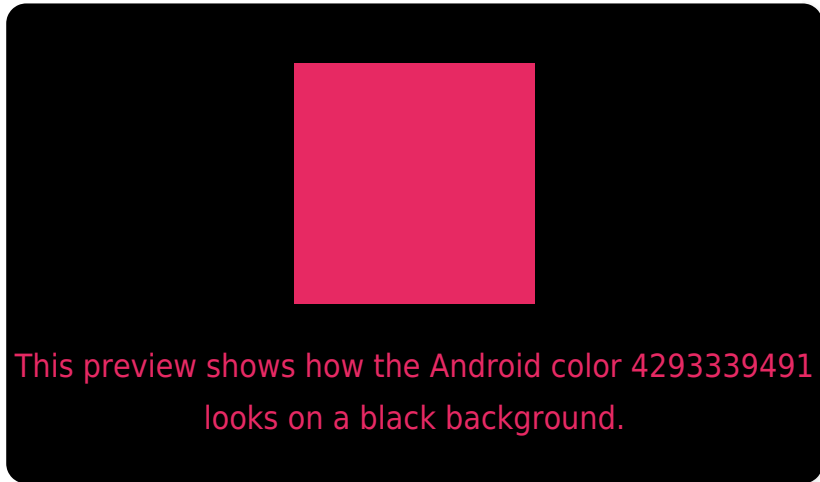
Large Text (above 18pt) WCAG AA ✓ Pass

Any Text WCAG AA × Fail

Large Text (above 18pt) WCAG AAA × Fail

Any Text WCAG AAA × Fail

Black Background



Color Contrast Check

Large Text (above 18pt) WCAG AA ✓ Pass

Any Text WCAG AA ✓ Pass

Large Text (above 18pt) WCAG AAA ✓ Pass

Any Text WCAG AAA × Fail

If you want to check with other color combinations, try the [Color Contrast Checker](#).

Android 4293339491 Background



This preview shows how black text looks on a background with the Android color 4293339491.



This preview shows how white text looks on a background with the Android color 4293339491.

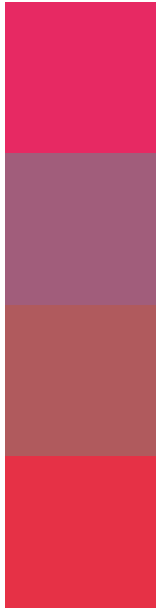
Color Blindness Simulation

Color vision deficiency is a very complex topic, and I could not describe the different causes any better than Wikipedia does, so if you want to learn more, you should check out their [article about color blindness](#).

Dichromacy



Trichromacy



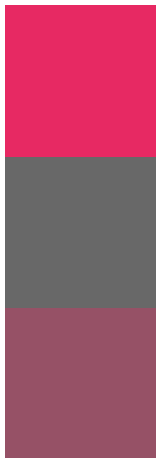
Original Color
4293339491

Protanomaly
4288765307

Deuteranomaly
4289747549

Tritanomaly
4293275974

Monochromacy



Original Color
4293339491

Achromatopsia
4285032552

Achromatomaly
4288041318

CSS Examples

Text

The CSS property to change the color of the text to Android 4293339491 is called "color". The color property can be set on classes, ids or directly on the HTML element.

This example shows how text in the color `rgb(231, 41, 99)` looks like.

```
.text, #text, p{  
  color:rgb(231, 41, 99)  
}
```

If you want to add a text shadow in that color use the text-shadow property, you can generate a text shadow directly with our [CSS Text Shadow Generator](#).

Here you see how black text with a 4 pixel rgb(231, 41, 99) colored shadow looks like.

```
.shadow{ text-shadow: 4px 4px 2px rgb(231, 41, 99) }
```

Border

The CSS property to change the border of an element to Android 4293339491 is called "border". The border property can be set on classes, ids or directly on the HTML element.

This example shows the color as border, it can be applied via the CSS property "border" or "border-color".

```
.border, #border, table{ border:4px solid rgb(231, 41, 99) }
```

If only the border color should be changed use the property `border-color`.

```
.border{ border-color:rgb(231, 41, 99) }
```

If you want to add a box shadow in that color use:

Here you see how a box with a 4 pixel `rgb(231, 41, 99)` colored shadow looks like.

```
.boxshadow{ -moz-box-shadow:4px 4px 4px  
4px rgb(231, 41, 99); -webkit-box-  
shadow:4px 4px 4px 4px rgb(231, 41, 99);  
box-shadow:4px 4px 4px 4px rgb(231, 41,  
99) }
```

Background

The CSS property to change the background color of an element to Android 4293339491 is called "background". The background property can be set on classes, ids or directly on the HTML element.

```
.background, #background, body{  
background: rgb(231, 41, 99) }
```

If only the background color should be changed can be used:

```
.background{ background-color: rgb(231, 41,  
99) }
```

This example shows the color as background, it is applied via the CSS property "background".

To optimize and compress your CSS code, you can use our [online CSS compressor and optimizer](#) based on csstidy. If you want to create a linear or radial gradient as background or border, check our [CSS Gradient Generator](#).

Hey! You found this booklet interesting? Support Converting Colors with the new Membership Option!

The pro membership hides all ads, plus gives you double the colors in the color bucket, and more awesome pro features!

[Learn more, Memberships starting at \\$2.50/m!](#)

**Follow me
on Twitter!**

@ConvertingColor