

# Converting Colors

Android(4293340520)

Have a look what the booklet for  
Android(4293340520) contains.

<b>Android(4293340520)</b> .....	3
<i><b>Conversions</b></i> .....	4
<i><b>Details</b></i> .....	6
<i><b>Harmonies</b></i> .....	11
<i><b>Previews</b></i> .....	23
<i><b>Color Blindness Simulation</b></i> .....	26
<i><b>CSS Examples</b></i> .....	29

# Color

**Android(4293340520)**

# Conversions

## Conversions Part 1

<b>Format</b>	<b>Color</b>
Hex	E72D68
RGB	231, 45, 104
RGB Percent	91%, 18%, 41%
CMY	0.0941, 0.8235, 0.5922
CMYK	0.00, 0.81, 0.55, 0.09
HSL	341°, 79%, 54%
HSV	341°, 81%, 91%
XYZ	36.3921, 19.8652, 15.0130
YIQ	107.3400, 91.9170, 57.7810

# Conversions

## Conversions Part 2

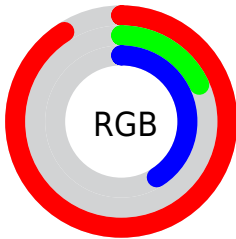
<b>Format</b>	<b>Color</b>
<b>R<sub>YB</sub></b>	231, 45, 104
Decimal	15150440
CIE <sub>Lab</sub>	51.68, 71.33, 13.37
CIE <sub>LCh</sub>	52, 72.572, 10.619
Yxy	19.8652, 0.5106, 0.2787
Android (android.graphics.Color)	4293340520 (0xFFE72D68)
YUV	107.3400, -1.6466, 108.4498
Hunter-Lab	44.5704, 67.7486, 11.2281

# Details

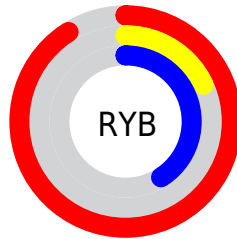
The Android color **4293340520** is a dark color, and the websafe version is hex **FF3366**. The color can be described as dark washed rose. A complement of this color would be **4281198508**, and the grayscale version is **4285229931**.

A 20% lighter version of the original color is **4294930075**, and **4289200186** is the 20% darker color. If you saturate the color by 10%, you get **4293334616**, and if you desaturate by 10%, it is **4293346424**.

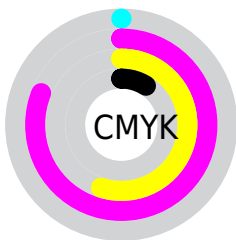
# Distribution



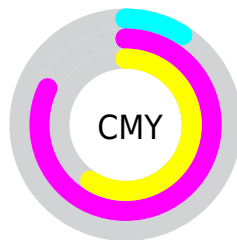
- Red (91%)
- Green (18%)
- Blue (41%)



- Red (91%)
- Yellow (18%)
- Blue (41%)



- Cyan (0%)
- Magenta (81%)
- Yellow (55%)
- Black (9%)



- Cyan (9%)
- Magenta (82%)
- Yellow (59%)

# Brightness & Saturation Gradients

These gradients show how the Android color 4293340520 changes by changing the brightness by 10 percent. The first figure shows a shift by +10% for each color and the second figure -10%.

Similar to the brightness gradients but the following saturation gradients show a change of the Android color 4293340520 by changing the saturation by 10% instead.



 4293340520

 4293340520

4294967295

 4291297360

 4294930075

 4289200186

 4294937782

 4287234085

 4294945233

 4285202448

 4294952941

 4283301891

 4294960639

 4281270274

 4278190080

 4293340520

 4293340520

 4293334616

 4293346424

 4293328969

 4293352328

 4293358231

 4293364135

 4293370295

 4293376199

 4293382102

 4293388006

 4293393910

# Harmonies

## Analogous

The Analogous color harmony consists of three colors that are next to each other on the color wheel.



4292098982



4293340520



4292495660

# Triad

The Triadic color harmony groups three colors that are evenly spaced from another and form a triangle on the color wheel.



4293340520



4281896192



4278226417

# Complementary

The Complementary color scheme is a pair of colors which are on the opposite of each other on the color wheel.



4293340520



4281198508

# Split Complementary

Split-complementary colors differ from the complementary color scheme. The scheme consists of three colors, the original color and two neighbors of the complement color.



4278228427



4293340520



4278228047

# Square

The Square scheme is like the rectangle color scheme, but the four colors are evenly spaced on the color wheel.



4293340520



4286676992



4278228624



4278222071

# Rectangle

The Rectangle color scheme consists of four colors that form a rectangle on the color wheel.



4293340520



4290993920



4278228624



4278227432



# Sweetspot

The Sweet Spot groups the original color and five complimentary colors.



4293340520



4294951637



4289277415



4286602086



4278190080



4286611584



# Same Dimension

The Same Dimension uses a secret algorithm to generate beautiful new colors.



4293340520



4294903894



4293348397



4285753195



4289921081



4281532432



# Inverse Universe

The Inverse Universe completely reimagines the original color for something new.



4293340520



4294903894



4281190631



4285753195



4289921081

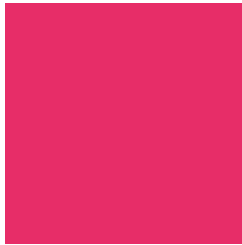


4281532432



# Previews

## White Background



This preview shows how the Android color 4293340520 looks on a white background.

## Color Contrast Check

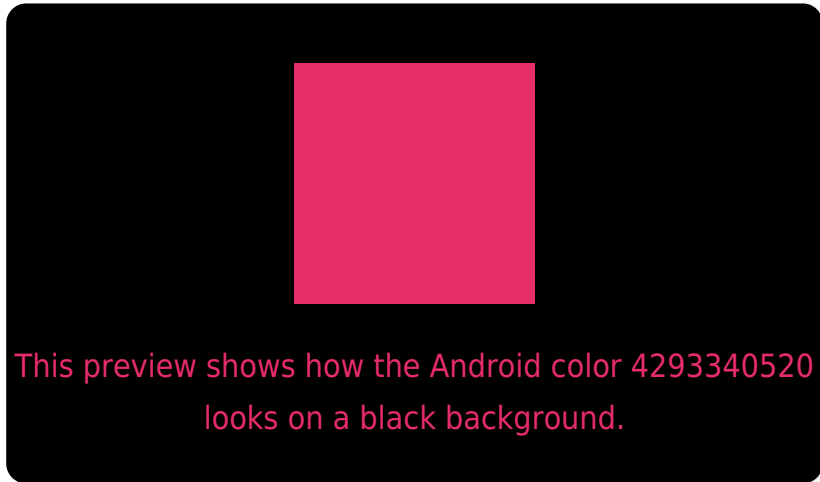
Large Text (above 18pt) WCAG AA ✓ Pass

Any Text WCAG AA ✗ Fail

Large Text (above 18pt) WCAG AAA ✗ Fail

Any Text WCAG AAA ✗ Fail

# Black Background



## Color Contrast Check

Large Text (above 18pt) WCAG AA ✓ Pass

Any Text WCAG AA ✓ Pass

Large Text (above 18pt) WCAG AAA ✓ Pass

Any Text WCAG AAA × Fail

If you want to check with other color combinations, try the [Color Contrast Checker](#).



# Android 4293340520 Background



This preview shows how black text looks on a background with the Android color 4293340520.



This preview shows how white text looks on a background with the Android color 4293340520.

# Color Blindness Simulation

Color vision deficiency is a very complex topic, and I could not describe the different causes any better than Wikipedia does, so if you want to learn more, you should check out their [article about color blindness](#).

## Dichromacy



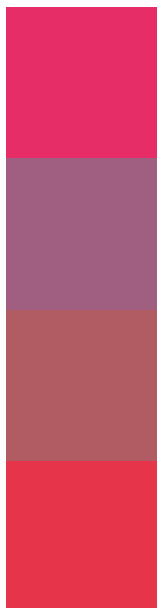
**Original Color**  
4293340520

**Protanopia**  
4286086031

**Deuteranopia**  
4287723359



# Trichromacy



**Original Color**

4293340520

**Protanomaly**

4288700289

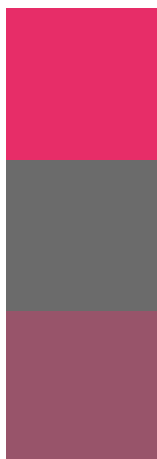
**Deuteranomaly**

4289748066

**Tritanomaly**

4293277003

# Monochromacy



**Original Color**

4293340520

**Achromatopsia**

4285229931

**Achromatomaly**

4288173162

# CSS Examples

## Text

The CSS property to change the color of the text to Android 4293340520 is called "color". The color property can be set on classes, ids or directly on the HTML element.

This example shows how text in the color `rgb(231, 45, 104)` looks like.

```
.text, #text, p{  
    color:rgb(231, 45, 104)  
}
```

If you want to add a text shadow in that color use the text-shadow property, you can generate a text shadow directly with our [CSS Text Shadow Generator](#).

Here you see how black text with a 4 pixel rgb(231, 45, 104) colored shadow looks like.

```
.shadow{ text-shadow: 4px 4px 2px rgb(231, 45, 104) }
```

## Border

The CSS property to change the border of an element to Android 4293340520 is called "border". The border property can be set on classes, ids or directly on the HTML element.

This example shows the color as border, it can be applied via the CSS property "border" or "border-color".

```
.border, #border, table{ border:4px solid rgb(231, 45, 104) }
```

If only the border color should be changed use the property `border-color`.

```
.border{ border-color:rgb(231, 45, 104) }
```

If you want to add a box shadow in that color use:

Here you see how a box with a 4 pixel `rgb(231, 45, 104)` colored shadow looks like.

```
.boxshadow{ -moz-box-shadow:4px 4px 4px  
4px rgb(231, 45, 104); -webkit-box-  
shadow:4px 4px 4px 4px rgb(231, 45, 104);  
box-shadow:4px 4px 4px 4px rgb(231, 45,  
104) }
```

# Background

The CSS property to change the background color of an element to Android 4293340520 is called "background". The background property can be set on classes, ids or directly on the HTML element.

```
.background, #background, body{  
background: rgb(231, 45, 104) }
```

If only the background color should be changed can be used:

```
.background{ background-color: rgb(231, 45,  
104) }
```

This example shows the color as background, it is applied via the CSS property "background".

To optimize and compress your CSS code, you can use our [online CSS compressor and optimizer](#) based on csstidy. If you want to create a linear or radial gradient as background or border, check our [CSS Gradient Generator](#).



Hey! You found this booklet interesting? Support Converting Colors with the new Membership Option!

The pro membership hides all ads, plus gives you double the colors in the color bucket, and more awesome pro features!

**[Learn more, Memberships starting at \\$2.50/m!](#)**

**Follow me  
on Twitter!**

@ConvertingColor