

Converting Colors

Android(4293348222)

Have a look what the booklet for
Android(4293348222) contains.

Android(4293348222)	3
<i>Conversions</i>	4
<i>Details</i>	6
<i>Harmonies</i>	11
<i>Previews</i>	23
<i>Color Blindness Simulation</i>	26
<i>CSS Examples</i>	29

Color

Android(4293348222)

Conversions

Conversions Part 1

Format	Color
Hex	E74B7E
RGB	231, 75, 126
RGB Percent	91%, 29%, 49%
CMY	0.0941, 0.7059, 0.5059
CMYK	0.00, 0.68, 0.45, 0.09
HSL	340°, 76%, 60%
HSV	340°, 68%, 91%
XYZ	39.2370, 23.5274, 22.2119
YIQ	127.4580, 76.6050, 48.9330

Conversions

Conversions Part 2

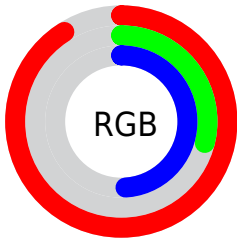
Format	Color
RYB	231, 75, 126
Decimal	15158142
CIELab	55.61, 63.63, 5.73
CIELCh	56, 63.884, 5.149
Yxy	23.5274, 0.4617, 0.2769
Android (android.graphics.Color)	4293348222 (0xFFE74B7E)
YUV	127.4580, -0.7188, 90.8063
Hunter-Lab	48.5051, 59.5092, 6.8029

Details

The Android color **4293348222** is a dark color, and the websafe version is hex **CC3366**. The color can be described as middle muted rose. A complement of this color would be **4283164596**, and the grayscale version is **4286545791**.

A 20% lighter version of the original color is **4294935986**, and **4289331277** is the 20% darker color. If you saturate the color by 10%, you get **4293342318**, and if you desaturate by 10%, it is **4293354126**.

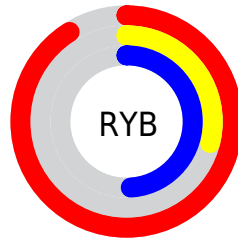
Distribution



Red (91%)

Green (29%)

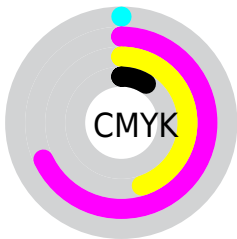
Blue (49%)



Red (91%)

Yellow (29%)

Blue (49%)

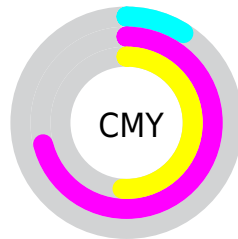


Cyan (0%)

Magenta (68%)

Yellow (45%)

Black (9%)



Cyan (9%)

Magenta (71%)

Yellow (51%)

Brightness & Saturation Gradients

These gradients show how the Android color 4293348222 changes by changing the brightness by 10 percent. The first figure shows a shift by +10% for each color and the second figure -10%.

Similar to the brightness gradients but the following saturation gradients show a change of the Android color 4293348222 by changing the saturation by 10% instead.



4293348222



4293348222

4294967295



4291308389



4294935986



4289331277



4294943182



4287365175



4294950634



4285464610



4294958335



4283564043



4294965759



4281663490



4278452224



4278190080



4293348222



4293348222

 4293342318

 4293354126

 4293336415

 4293360029

 4293330511

 4293365933

 4293328972

 4293371836

 4293377996

 4293383899

 4293389803

 4293394426

 4293394431

Harmonies

Analogous

The Analogous color harmony consists of three colors that are next to each other on the color wheel.



4291778741



4293348222



4292958280

Triad

The Triadic color harmony groups three colors that are evenly spaced from another and form a triangle on the color wheel.



4293348222



4284322845



4278228970

Complementary

The Complementary color scheme is a pair of colors which are on the opposite of each other on the color wheel.



4293348222



4283164596

Split Complementary

Split-complementary colors differ from the complementary color scheme. The scheme consists of three colors, the original color and two neighbors of the complement color.



4278230724



4293348222



4278230100

Square

The Square scheme is like the rectangle color scheme, but the four colors are evenly spaced on the color wheel.



4293348222



4288120320



4278230926



4278225396

Rectangle

The Rectangle color scheme consists of four colors that form a rectangle on the color wheel.



4293348222



4291848488



4278230926



4278229728

Sweetspot

The Sweet Spot groups the original color and five complimentary colors.



4293348222



4294954205



4289940455



4286603627



4278190080



4286611584

Same Dimension

The Same Dimension uses a secret algorithm to generate beautiful new colors.



4293348222



4294914164



4293354827



4285753195



4289921082



4281532433

Inverse Universe

The Inverse Universe completely reimagines the original color for something new.



4293348222



4294914164



4283157991



4285753195



4289921082



4281532433

Previews

White Background



This preview shows how the Android color 4293348222 looks on a white background.

Color Contrast Check

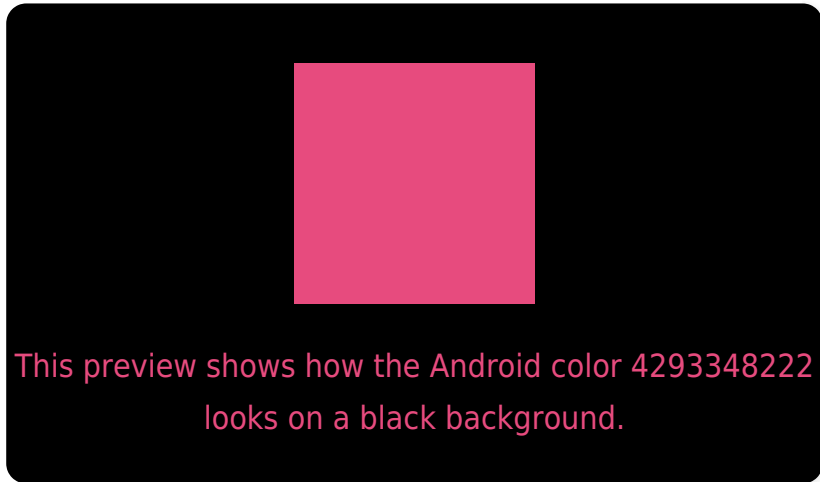
Large Text (above 18pt) WCAG AA ✓ Pass

Any Text WCAG AA ✗ Fail

Large Text (above 18pt) WCAG AAA ✗ Fail

Any Text WCAG AAA ✗ Fail

Black Background



Color Contrast Check

Large Text (above 18pt) WCAG AA ✓ Pass

Any Text WCAG AA ✓ Pass

Large Text (above 18pt) WCAG AAA ✓ Pass

Any Text WCAG AAA × Fail

If you want to check with other color combinations, try the [Color Contrast Checker](#).

Android 4293348222 Background



This preview shows how black text looks on a background with the Android color 4293348222.



This preview shows how white text looks on a background with the Android color 4293348222.

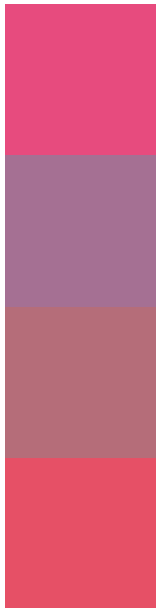
Color Blindness Simulation

Color vision deficiency is a very complex topic, and I could not describe the different causes any better than Wikipedia does, so if you want to learn more, you should check out their [article about color blindness](#).

Dichromacy



Trichromacy



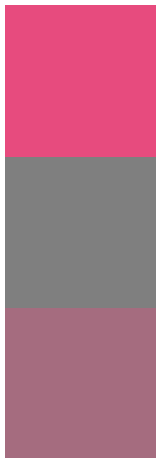
Original Color
4293348222

Protanomaly
4289032339

Deuteranomaly
4290080121

Tritanomaly
4293283942

Monochromacy



Original Color
4293348222

Achromatopsia
4286545791

Achromatomaly
4289031295

CSS Examples

Text

The CSS property to change the color of the text to Android 4293348222 is called "color". The color property can be set on classes, ids or directly on the HTML element.

This example shows how text in the color `rgb(231, 75, 126)` looks like.

```
.text, #text, p{  
    color:rgb(231, 75, 126)  
}
```

If you want to add a text shadow in that color use the text-shadow property, you can generate a text shadow directly with our [CSS Text Shadow Generator](#).

Here you see how black text with a 4 pixel rgb(231, 75, 126) colored shadow looks like.

```
.shadow{ text-shadow: 4px 4px 2px rgb(231, 75, 126) }
```

Border

The CSS property to change the border of an element to Android 4293348222 is called "border". The border property can be set on classes, ids or directly on the HTML element.

This example shows the color as border, it can be applied via the CSS property "border" or "border-color".

```
.border, #border, table{ border:4px solid rgb(231, 75, 126) }
```

If only the border color should be changed use the property `border-color`.

```
.border{ border-color:rgb(231, 75, 126) }
```

If you want to add a box shadow in that color use:

Here you see how a box with a 4 pixel `rgb(231, 75, 126)` colored shadow looks like.

```
.boxshadow{ -moz-box-shadow:4px 4px 4px  
4px rgb(231, 75, 126); -webkit-box-  
shadow:4px 4px 4px 4px rgb(231, 75, 126);  
box-shadow:4px 4px 4px 4px rgb(231, 75,  
126) }
```

Background

The CSS property to change the background color of an element to Android 4293348222 is called "background". The background property can be set on classes, ids or directly on the HTML element.

```
.background, #background, body{  
background: rgb(231, 75, 126) }
```

If only the background color should be changed can be used:

```
.background{ background-color: rgb(231, 75,  
126) }
```

This example shows the color as background, it is applied via the CSS property "background".

To optimize and compress your CSS code, you can use our [online CSS compressor and optimizer](#) based on csstidy. If you want to create a linear or radial gradient as background or border, check our [CSS Gradient Generator](#).

Hey! You found this booklet interesting? Support Converting Colors with the new Membership Option!

The pro membership hides all ads, plus gives you double the colors in the color bucket, and more awesome pro features!

[Learn more, Memberships starting at \\$2.50/m!](#)

**Follow me
on Twitter!**

@ConvertingColor