

Converting Colors

Android(4293357447)

Have a look what the booklet for
Android(4293357447) contains.

Android(4293357447)	3
<i>Conversions</i>	4
<i>Details</i>	6
<i>Harmonies</i>	11
<i>Previews</i>	23
<i>Color Blindness Simulation</i>	26
<i>CSS Examples</i>	29

Color

Android(4293357447)

Conversions

Conversions Part 1

Format	Color
Hex	E76F87
RGB	231, 111, 135
RGB Percent	91%, 44%, 53%
CMY	0.0941, 0.5647, 0.4706
CMYK	0.00, 0.52, 0.42, 0.09
HSL	348°, 71%, 67%
HSV	348°, 52%, 91%
XYZ	43.0126, 30.1071, 26.4659
YIQ	149.6160, 63.8160, 32.9040

Conversions

Conversions Part 2

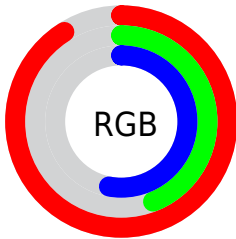
Format	Color
R_{YB}	231, 111, 135
Decimal	15167367
CIE _{Lab}	61.75, 48.76, 9.23
CIE _{LCh}	62, 49.626, 10.718
Yxy	30.1071, 0.4319, 0.3023
Android (android.graphics.Color)	4293357447 (0xFFE76F87)
YUV	149.6160, -7.2057, 71.3738
Hunter-Lab	54.8699, 43.9041, 9.8111

Details

The Android color `4293357447` is a light color, and the websafe version is hex `CC6666`. A complement of this color would be `4285523919`, and the grayscale version is `4288059030`.

A 20% lighter version of the original color is `4294944444`, and `4289476950` is the 20% darker color. If you saturate the color by 10%, you get `4293351541`, and if you desaturate by 10%, it is `4293363353`.

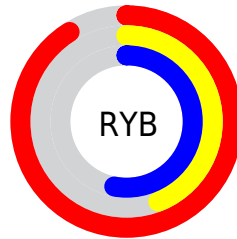
Distribution



Red (91%)

Green (44%)

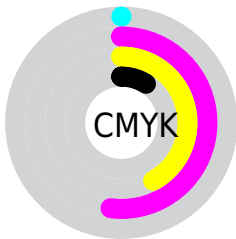
Blue (53%)



Red (91%)

Yellow (44%)

Blue (53%)

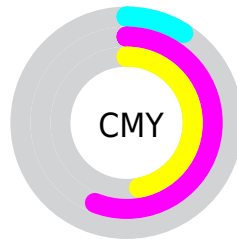


Cyan (0%)

Magenta (52%)

Yellow (42%)

Black (9%)



Cyan (9%)

Magenta (56%)

Yellow (47%)

Brightness & Saturation Gradients

These gradients show how the Android color 4293357447 changes by changing the brightness by 10 percent. The first figure shows a shift by +10% for each color and the second figure -10%.

Similar to the brightness gradients but the following saturation gradients show a change of the Android color 4293357447 by changing the saturation by 10% instead.

 4293357447

 4293357447

4294967295

 4291384430

 4294944444

 4289476950

 4294951640

 4287568959

 4294959092

 4285661225

 4294966527

 4283826197

 4282122241

 4279894017

 4278190080

 4293357447

 4293357447

 4293351541

 4293363353

 4293345634

 4293369260

 4293339728

 4293375166

 4293333821

 4293381073

 4293328942

 4293387235

 4293393142

 4293394431

Harmonies

Analogous

The Analogous color harmony consists of three colors that are next to each other on the color wheel.



4292310195



4293357447



4292900958

Triad

The Triadic color harmony groups three colors that are evenly spaced from another and form a triangle on the color wheel.



4293357447



4285506384



4278231784

Complementary

The Complementary color scheme is a pair of colors which are on the opposite of each other on the color wheel.



4293357447



4285523919

Split Complementary

Split-complementary colors differ from the complementary color scheme. The scheme consists of three colors, the original color and two neighbors of the complement color.



4278233549



4293357447



4280527223

Square

The Square scheme is like the rectangle color scheme, but the four colors are evenly spaced on the color wheel.



4293357447



4288649274



4278234020



4284782059

Rectangle

The Rectangle color scheme consists of four colors that form a rectangle on the color wheel.



4293357447



4291855177



4278234020



4278232545

Sweetspot

The Sweet Spot groups the original color and five complimentary colors.



4293357447



4294956766



4291784679



4286605164



4278190080



4286611584

Same Dimension

The Same Dimension uses a secret algorithm to generate beautiful new colors.



4293357447



4294926721



4293366639



4285753194



4289921060



4281532426

Inverse Universe

The Inverse Universe completely reimagines the original color for something new.



4293357447



4294926721



4285514727



4285753194



4289921060



4281532426

Previews

White Background



This preview shows how the Android color 4293357447 looks on a white background.

Color Contrast Check

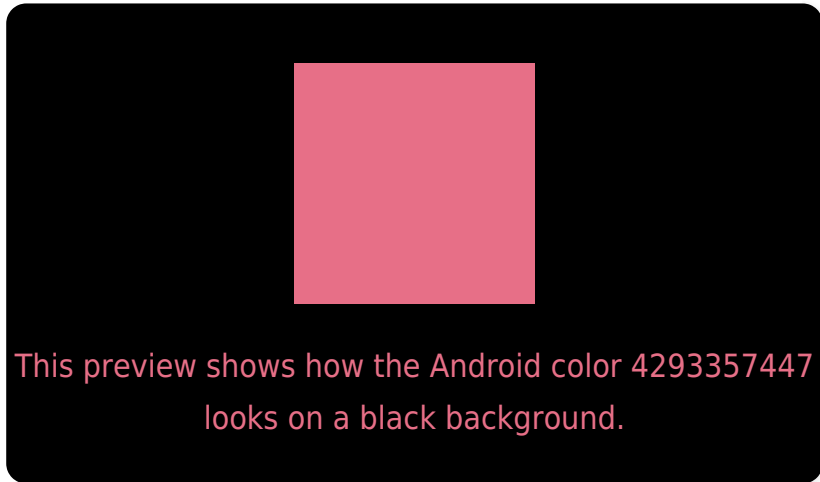
Large Text (above 18pt) WCAG AA × Fail

Any Text WCAG AA × Fail

Large Text (above 18pt) WCAG AAA × Fail

Any Text WCAG AAA × Fail

Black Background



Color Contrast Check

Large Text (above 18pt) WCAG AA ✓ Pass

Any Text WCAG AA ✓ Pass

Large Text (above 18pt) WCAG AAA ✓ Pass

Any Text WCAG AAA ✓ Pass

If you want to check with other color combinations, try the [Color Contrast Checker](#).

Android 4293357447 Background



This preview shows how black text looks on a background with the Android color 4293357447.



This preview shows how white text looks on a background with the Android color 4293357447.

Color Blindness Simulation

Color vision deficiency is a very complex topic, and I could not describe the different causes any better than Wikipedia does, so if you want to learn more, you should check out their [article about color blindness](#).

Dichromacy

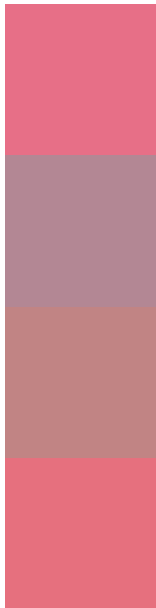


Original Color
4293357447

Protanopia
4288058780

Deuteranopia
4289433730

Trichromacy



Original Color
4293357447

Protanomaly
4289955732

Deuteranomaly
4290872452

Tritanomaly
4293292158

Monochromacy



Original Color
4293357447

Achromatopsia
4288059030

Achromatomaly
4289955985

CSS Examples

Text

The CSS property to change the color of the text to Android 4293357447 is called "color". The color property can be set on classes, ids or directly on the HTML element.

This example shows how text in the color `rgb(231, 111, 135)` looks like.

```
.text, #text, p{  
    color:rgb(231, 111, 135)  
}
```

If you want to add a text shadow in that color use the text-shadow property, you can generate a text shadow directly with our [CSS Text Shadow Generator](#).

Here you see how black text with a 4 pixel rgb(231, 111, 135) colored shadow looks like.

```
.shadow{ text-shadow: 4px 4px 2px rgb(231, 111, 135) }
```

Border

The CSS property to change the border of an element to Android 4293357447 is called "border". The border property can be set on classes, ids or directly on the HTML element.

This example shows the color as border, it can be applied via the CSS property "border" or "border-color".

```
.border, #border, table{ border:4px solid rgb(231, 111, 135) }
```

If only the border color should be changed use the property `border-color`.

```
.border{ border-color:rgb(231, 111, 135) }
```

If you want to add a box shadow in that color use:

Here you see how a box with a 4 pixel `rgb(231, 111, 135)` colored shadow looks like.

```
.boxshadow{ -moz-box-shadow:4px 4px 4px  
4px rgb(231, 111, 135); -webkit-box-  
shadow:4px 4px 4px 4px rgb(231, 111, 135);  
box-shadow:4px 4px 4px 4px rgb(231, 111,  
135) }
```

Background

The CSS property to change the background color of an element to Android 4293357447 is called "background". The background property can be set on classes, ids or directly on the HTML element.

```
.background, #background, body{  
background: rgb(231, 111, 135) }
```

If only the background color should be changed can be used:

```
.background{ background-color: rgb(231,  
111, 135) }
```

This example shows the color as background, it is applied via the CSS property "background".

To optimize and compress your CSS code, you can use our [online CSS compressor and optimizer](#) based on csstidy. If you want to create a linear or radial gradient as background or border, check our [CSS Gradient Generator](#).

Hey! You found this booklet interesting? Support Converting Colors with the new Membership Option!

The pro membership hides all ads, plus gives you double the colors in the color bucket, and more awesome pro features!

[Learn more, Memberships starting at \\$2.50/m!](#)

**Follow me
on Twitter!**

@ConvertingColor