

Converting Colors

Android(4293361308)

Have a look what the booklet for
Android(4293361308) contains.

Android(4293361308)	3
<i>Conversions</i>	4
<i>Details</i>	6
<i>Harmonies</i>	11
<i>Previews</i>	23
<i>Color Blindness Simulation</i>	26
<i>CSS Examples</i>	29

Color

Android(4293361308)

Conversions

Conversions Part 1

Format	Color
Hex	E77E9C
RGB	231, 126, 156
RGB Percent	91%, 49%, 61%
CMY	0.0941, 0.5059, 0.3882
CMYK	0.00, 0.45, 0.32, 0.09
HSL	343°, 69%, 70%
HSV	343°, 45%, 91%
XYZ	46.4166, 34.3109, 35.6287
YIQ	160.8150, 52.9500, 31.5900

Conversions

Conversions Part 2

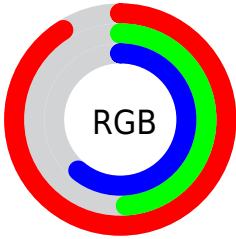
Format	Color
R_{YB}	231, 126, 156
Decimal	15171228
CIE _{Lab}	65.21, 43.71, 2.20
CIE _{LCh}	65, 43.763, 2.876
Yxy	34.3109, 0.3989, 0.2949
Android (android.graphics.Color)	4293361308 (0xFFE77E9C)
YUV	160.8150, -2.3738, 61.5522
Hunter-Lab	58.5755, 38.9403, 4.9396

Details

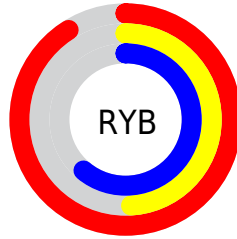
The Android color `4293361308` is a light color, and the websafe version is hex `CC6699`. A complement of this color would be `4286506953`, and the grayscale version is `4288782753`.

A 20% lighter version of the original color is `4294948306`, and `4289546601` is the 20% darker color. If you saturate the color by 10%, you get `4293355404`, and if you desaturate by 10%, it is `4293367213`.

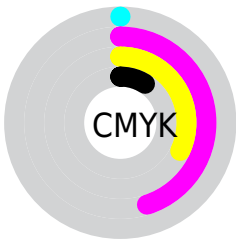
Distribution



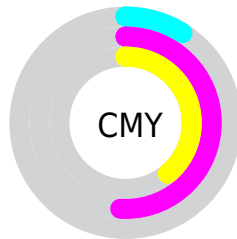
- Red (91%)
- Green (49%)
- Blue (61%)



- Red (91%)
- Yellow (49%)
- Blue (61%)



- Cyan (0%)
- Magenta (45%)
- Yellow (32%)
- Black (9%)



- Cyan (9%)
- Magenta (51%)
- Yellow (39%)

Brightness & Saturation Gradients

These gradients show how the Android color 4293361308 changes by changing the brightness by 10 percent. The first figure shows a shift by +10% for each color and the second figure -10%.

Similar to the brightness gradients but the following saturation gradients show a change of the Android color 4293361308 by changing the saturation by 10% instead.

 4293361308

 4293361308

4294967295

 4291454082

 4294948306

 4289546601

 4294955503

 4287639377

 4294962943

 4285796922

 4284022821

 4282318863

 4280614913

 4278190080

 4293361308

 4293361308

 4293355404

 4293367213

 4293349499

 4293373117

 4293343595

 4293379022

 4293337690

 4293384926

 4293331530

 4293391087

 4293328962

 4293394431

Harmonies

Analogous

The Analogous color harmony consists of three colors that are next to each other on the color wheel.



4291986883



4293361308



4293297014

Triad

The Triadic color harmony groups three colors that are evenly spaced from another and form a triangle on the color wheel.



4293361308



4287277146



4278234339

Complementary

The Complementary color scheme is a pair of colors which are on the opposite of each other on the color wheel.



4293361308



4286506953

Split Complementary

Split-complementary colors differ from the complementary color scheme. The scheme consists of three colors, the original color and two neighbors of the complement color.



4278235592



4293361308



4284002425

Square

The Square scheme is like the rectangle color scheme, but the four colors are evenly spaced on the color wheel.



4293361308



4289961294



4278236065



4284785132

Rectangle

The Rectangle color scheme consists of four colors that form a rectangle on the color wheel.



4293361308



4292578145



4278236065



4278234844

Sweetspot

The Sweet Spot groups the original color and five complimentary colors.



4293361308



4294958054



4291329767



4286605936



4278190080



4286611584

Same Dimension

The Same Dimension uses a secret algorithm to generate beautiful new colors.



4293361308



4294931355



4293366654



4285753195



4289921075



4281532431

Inverse Universe

The Inverse Universe completely reimagines the original color for something new.



4293361308



4294931355



4286501607



4285753195



4289921075



4281532431

Previews

White Background



This preview shows how the Android color 4293361308 looks on a white background.

Color Contrast Check

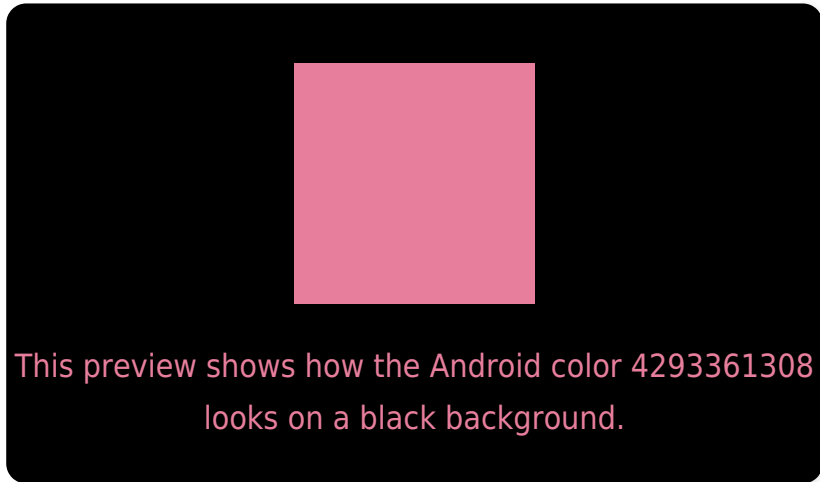
Large Text (above 18pt) WCAG AA × Fail

Any Text WCAG AA × Fail

Large Text (above 18pt) WCAG AAA × Fail

Any Text WCAG AAA × Fail

Black Background



Color Contrast Check

Large Text (above 18pt) WCAG AA ✓ Pass

Any Text WCAG AA ✓ Pass

Large Text (above 18pt) WCAG AAA ✓ Pass

Any Text WCAG AAA ✓ Pass

If you want to check with other color combinations, try the [Color Contrast Checker](#).

Android 4293361308 Background



This preview shows how black text looks on a background with the Android color 4293361308.




This preview shows how white text looks on a background with the Android color 4293361308.

Color Blindness Simulation

Color vision deficiency is a very complex topic, and I could not describe the different causes any better than Wikipedia does, so if you want to learn more, you should check out their [article about color blindness](#).

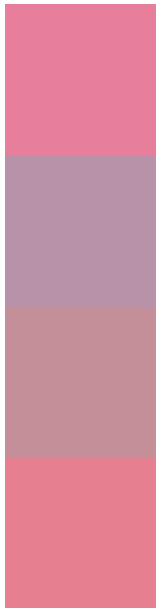
Dichromacy





Tritanopia
4293230987

Trichromacy



Original Color
4293361308

Protanomaly
4290286248

Deuteranomaly
4291137433

Tritanomaly
4293296273

Monochromacy



Original Color
4293361308

Achromatopsia
4288782753

Achromatomaly
4290417823

CSS Examples

Text

The CSS property to change the color of the text to Android 4293361308 is called "color". The color property can be set on classes, ids or directly on the HTML element.

This example shows how text in the color `rgb(231, 126, 156)` looks like.

```
.text, #text, p{  
    color:rgb(231, 126, 156)  
}
```

If you want to add a text shadow in that color use the text-shadow property, you can generate a text shadow directly with our [CSS Text Shadow Generator](#).

Here you see how black text with a 4 pixel rgb(231, 126, 156) colored shadow looks like.

```
.shadow{ text-shadow: 4px 4px 2px rgb(231, 126, 156) }
```

Border

The CSS property to change the border of an element to Android 4293361308 is called "border". The border property can be set on classes, ids or directly on the HTML element.

This example shows the color as border, it can be applied via the CSS property "border" or "border-color".

```
.border, #border, table{ border:4px solid rgb(231, 126, 156) }
```

If only the border color should be changed use the property `border-color`.

```
.border{ border-color:rgb(231, 126, 156) }
```

If you want to add a box shadow in that color use:

Here you see how a box with a 4 pixel `rgb(231, 126, 156)` colored shadow looks like.

```
.boxshadow{ -moz-box-shadow:4px 4px 4px  
4px rgb(231, 126, 156); -webkit-box-  
shadow:4px 4px 4px 4px rgb(231, 126, 156);  
box-shadow:4px 4px 4px 4px rgb(231, 126,  
156) }
```

Background

The CSS property to change the background color of an element to Android 4293361308 is called "background". The background property can be set on classes, ids or directly on the HTML element.

```
.background, #background, body{  
background: rgb(231, 126, 156) }
```

If only the background color should be changed can be used:

```
.background{ background-color: rgb(231,  
126, 156) }
```

This example shows the color as background, it is applied via the CSS property "background".

To optimize and compress your CSS code, you can use our [online CSS compressor and optimizer](#) based on csstidy. If you want to create a linear or radial gradient as background or border, check our [CSS Gradient Generator](#).

Hey! You found this booklet interesting? Support Converting Colors with the new Membership Option!

The pro membership hides all ads, plus gives you double the colors in the color bucket, and more awesome pro features!

[Learn more, Memberships starting at \\$2.50/m!](#)

**Follow me
on Twitter!**

@ConvertingColor