

Converting Colors

Android(4293361575)

Have a look what the booklet for
Android(4293361575) contains.

Android(4293361575)	3
<i>Conversions</i>	4
<i>Details</i>	6
<i>Harmonies</i>	11
<i>Previews</i>	23
<i>Color Blindness Simulation</i>	26
<i>CSS Examples</i>	29

Color

Android(4293361575)

Conversions

Conversions Part 1

Format	Color
Hex	E77FA7
RGB	231, 127, 167
RGB Percent	91%, 50%, 65%
CMY	0.0941, 0.5020, 0.3451
CMYK	0.00, 0.45, 0.28, 0.09
HSL	337°, 68%, 70%
HSV	337°, 45%, 91%
XYZ	47.5194, 34.9577, 40.8022
YIQ	162.6560, 49.1440, 34.4880

Conversions

Conversions Part 2

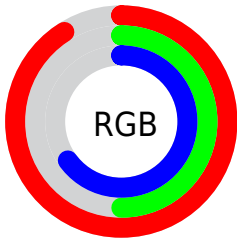
Format	Color
R_{YB}	231, 127, 167
Decimal	15171495
CIE _{Lab}	65.72, 44.62, -3.30
CIE _{LCh}	66, 44.738, 355.768
Yxy	34.9577, 0.3855, 0.2836
Android (android.graphics.Color)	4293361575 (0xFFE77FA7)
YUV	162.6560, 2.1416, 59.9377
Hunter-Lab	59.1250, 39.9936, 0.4715

Details

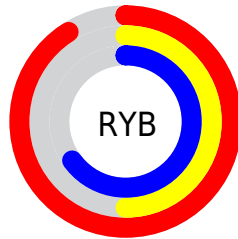
The Android color `4293361575` is a light color, and the websafe version is hex `CC6699`. A complement of this color would be `4286572479`, and the grayscale version is `4288914339`.

A 20% lighter version of the original color is `4294948574`, and `4289546867` is the 20% darker color. If you saturate the color by 10%, you get `4293355673`, and if you desaturate by 10%, it is `4293367477`.

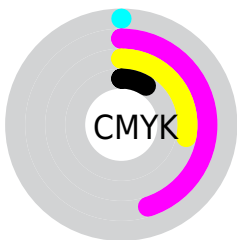
Distribution



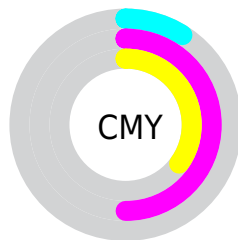
- Red (91%)
- Green (50%)
- Blue (65%)



- Red (91%)
- Yellow (50%)
- Blue (65%)



- Cyan (0%)
- Magenta (45%)
- Yellow (28%)
- Black (9%)



- Cyan (9%)
- Magenta (50%)
- Yellow (35%)

Brightness & Saturation Gradients

These gradients show how the Android color 4293361575 changes by changing the brightness by 10 percent. The first figure shows a shift by +10% for each color and the second figure -10%.

Similar to the brightness gradients but the following saturation gradients show a change of the Android color 4293361575 by changing the saturation by 10% instead.



4293361575



4293361575

4294967295



4291454093



4294948574



4289546867



4294955771



4287705179



4294963199



4285862723



4284088365



4282384409



4280745985



4278190080



4293361575



4293361575

 4293355673

 4293367477

 4293349771

 4293373379

 4293343868

 4293379282

 4293337966

 4293385184

 4293332064

 4293391342

 4293328985

 4293394428

 4293394431

Harmonies

Analogous

The Analogous color harmony consists of three colors that are next to each other on the color wheel.



4291594445



4293361575



4293624191

Triad

The Triadic color harmony groups three colors that are evenly spaced from another and form a triangle on the color wheel.



4293361575



4287998037



4278235105

Complementary

The Complementary color scheme is a pair of colors which are on the opposite of each other on the color wheel.



4293361575



4286572479

Split Complementary

Split-complementary colors differ from the complementary color scheme. The scheme consists of three colors, the original color and two neighbors of the complement color.



4278236353



4293361575



4284854385

Square

The Square scheme is like the rectangle color scheme, but the four colors are evenly spaced on the color wheel.



4293361575



4290616142



4278891672



4283344623

Rectangle

The Rectangle color scheme consists of four colors that form a rectangle on the color wheel.



4293361575



4293036136



4278891672



4278235608

Sweetspot

The Sweet Spot groups the original color and five complimentary colors.



4293361575



4294958057



4290609127



4286605938



4278190080



4286611584

Same Dimension

The Same Dimension uses a secret algorithm to generate beautiful new colors.



4293361575



4294931882



4293364095



4285753196



4289921093



4281532436

Inverse Universe

The Inverse Universe completely reimagines the original color for something new.



4293361575



4294931882



4286569959



4285753196



4289921093



4281532436

Previews

White Background



This preview shows how the Android color 4293361575 looks on a white background.

Color Contrast Check

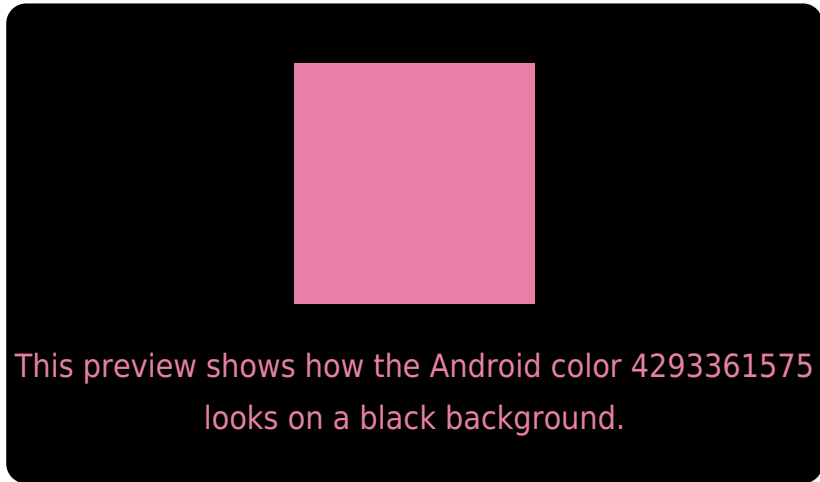
Large Text (above 18pt) WCAG AA × Fail

Any Text WCAG AA × Fail

Large Text (above 18pt) WCAG AAA × Fail

Any Text WCAG AAA × Fail

Black Background



Color Contrast Check

Large Text (above 18pt) WCAG AA ✓ Pass

Any Text WCAG AA ✓ Pass

Large Text (above 18pt) WCAG AAA ✓ Pass

Any Text WCAG AAA ✓ Pass

If you want to check with other color combinations, try the [Color Contrast Checker](#).

Android 4293361575 Background



This preview shows how black text looks on a background with the Android color 4293361575.



This preview shows how white text looks on a background with the Android color 4293361575.

Color Blindness Simulation

Color vision deficiency is a very complex topic, and I could not describe the different causes any better than Wikipedia does, so if you want to learn more, you should check out their [article about color blindness](#).

Dichromacy



Original Color
4293361575

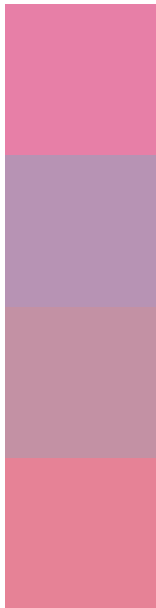
Protanopia
4288389051

Deuteranopia
4289633186



Tritanopia
4293231757

Trichromacy



Original Color
4293361575

Protanomaly
4290220980

Deuteranomaly
4291006884

Tritanomaly
4293296790

Monochromacy



Original Color
4293361575

Achromatopsia
4288914339

Achromatomaly
4290549412

CSS Examples

Text

The CSS property to change the color of the text to Android 4293361575 is called "color". The color property can be set on classes, ids or directly on the HTML element.

This example shows how text in the color `rgb(231, 127, 167)` looks like.

```
.text, #text, p{  
    color:rgb(231, 127, 167)  
}
```

If you want to add a text shadow in that color use the text-shadow property, you can generate a text shadow directly with our [CSS Text Shadow Generator](#).

Here you see how black text with a 4 pixel rgb(231, 127, 167) colored shadow looks like.

```
.shadow{ text-shadow: 4px 4px 2px rgb(231, 127, 167) }
```

Border

The CSS property to change the border of an element to Android 4293361575 is called "border". The border property can be set on classes, ids or directly on the HTML element.

This example shows the color as border, it can be applied via the CSS property "border" or "border-color".

```
.border, #border, table{ border:4px solid rgb(231, 127, 167) }
```

If only the border color should be changed use the property `border-color`.

```
.border{ border-color:rgb(231, 127, 167) }
```

If you want to add a box shadow in that color use:

Here you see how a box with a 4 pixel `rgb(231, 127, 167)` colored shadow looks like.

```
.boxshadow{ -moz-box-shadow:4px 4px 4px 4px rgb(231, 127, 167); -webkit-box-shadow:4px 4px 4px 4px rgb(231, 127, 167); box-shadow:4px 4px 4px 4px rgb(231, 127, 167) }
```

Background

The CSS property to change the background color of an element to Android 4293361575 is called "background". The background property can be set on classes, ids or directly on the HTML element.

```
.background, #background, body{  
background: rgb(231, 127, 167) }
```

If only the background color should be changed can be used:

```
.background{ background-color: rgb(231,  
127, 167) }
```

This example shows the color as background, it is applied via the CSS property "background".

To optimize and compress your CSS code, you can use our [online CSS compressor and optimizer](#) based on csstidy. If you want to create a linear or radial gradient as background or border, check our [CSS Gradient Generator](#).

Hey! You found this booklet interesting? Support Converting Colors with the new Membership Option!

The pro membership hides all ads, plus gives you double the colors in the color bucket, and more awesome pro features!

[Learn more, Memberships starting at \\$2.50/m!](#)

**Follow me
on Twitter!**

@ConvertingColor