

# Converting Colors

Android(4293364629)

Have a look what the booklet for  
Android(4293364629) contains.

<b>Android(4293364629)</b> .....	3
<b><i>Conversions</i></b> .....	4
<b><i>Details</i></b> .....	6
<b><i>Harmonies</i></b> .....	11
<b><i>Previews</i></b> .....	23
<b><i>Color Blindness Simulation</i></b> .....	26
<b><i>CSS Examples</i></b> .....	29

# **Color**

**Android(4293364629)**

# Conversions

## Conversions Part 1

Format	Color
Hex	E78B95
RGB	231, 139, 149
RGB Percent	91%, 55%, 58%
CMY	0.0941, 0.4549, 0.4157
CMYK	0.00, 0.40, 0.35, 0.09
HSL	353°, 66%, 73%
HSV	353°, 40%, 91%
XYZ	47.6124, 37.6241, 33.1865
YIQ	167.6480, 51.6220, 22.6140

# Conversions

## Conversions Part 2

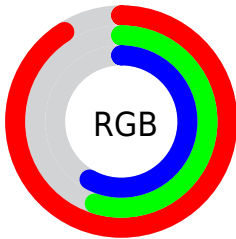
Format	Color
R <sub>Y</sub> B	231, 139, 149
Decimal	15174549
CIE Lab	67.74, 36.14, 9.79
CIE LCh	68, 37.440, 15.156
Yxy	37.6241, 0.4021, 0.3177
Android (android.graphics.Color)	4293364629 (0xFFE78B95)
YUV	167.6480, -9.1935, 55.5597
Hunter-Lab	61.3385, 31.2137, 10.8587

# Details

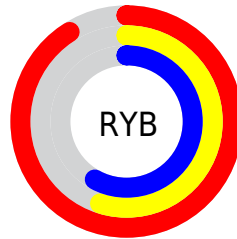
The Android color `4293364629` is a light color, and the websafe version is hex `FF9999`. A complement of this color would be `4287358941`, and the grayscale version is `4289243304`.

A 20% lighter version of the original color is `4294951627`, and `4289550178` is the 20% darker color. If you saturate the color by 10%, you get `4293358720`, and if you desaturate by 10%, it is `4293370538`.

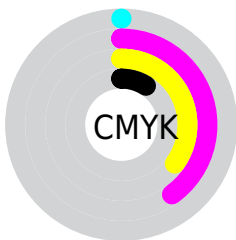
# Distribution



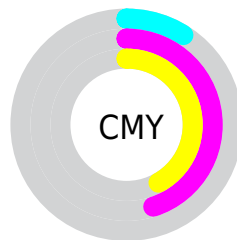
- Red (91%)
- Green (55%)
- Blue (58%)



- Red (91%)
- Yellow (55%)
- Blue (58%)



- Cyan (0%)
- Magenta (40%)
- Yellow (35%)
- Black (9%)



- Cyan (9%)
- Magenta (45%)
- Yellow (42%)

# Brightness & Saturation Gradients

These gradients show how the Android color 4293364629 changes by changing the brightness by 10 percent. The first figure shows a shift by +10% for each color and the second figure -10%.

Similar to the brightness gradients but the following saturation gradients show a change of the Android color 4293364629 by changing the saturation by 10% instead.





4293364629



4293364629

4294967295



4291457403



4294951627



4289550178



4294958823



4287708747



4294966271



4285867316



4284090655



4282384391



4280811521



4278190080



4293364629



4293364629

 4293358720

 4293370538

 4293352812

 4293376446

 4293346903

 4293382355

 4293340995

 4293388263

 4293334830

 4293394172

 4293328921

 4293394431

# Harmonies

## Analogous

The Analogous color harmony consists of three colors that are next to each other on the color wheel.



4292644279



4293364629



4292907639

# Triad

The Triadic color harmony groups three colors that are evenly spaced from another and form a triangle on the color wheel.



4293364629



4286886260



4283805158

# Complementary

The Complementary color scheme is a pair of colors which are on the opposite of each other on the color wheel.



4293364629



4287358941

# Split Complementary

Split-complementary colors differ from the complementary color scheme. The scheme consists of three colors, the original color and two neighbors of the complement color.



4279350484



4293364629



4284069523

# Square

The Square scheme is like the rectangle color scheme, but the four colors are evenly spaced on the color wheel.



4293364629



4289374307



4280596406



4287668966

# Rectangle

The Rectangle color scheme consists of four colors that form a rectangle on the color wheel.



4293364629



4291991912



4280596406



4282364130



# Sweetspot

The Sweet Spot groups the original color and five complimentary colors.



4293364629



4294959332



4292643815



4286606960



4278190080



4286611584



# Same Dimension

The Same Dimension uses a secret algorithm to generate beautiful new colors.



4293364629



4294935954



4293373579



4285753193



4289921043



4281532422



# Inverse Universe

The Inverse Universe completely reimagines the original color for something new.



4293364629



4294935954



4287349991



4285753193



4289921043



4281532422



# Previews

## White Background



This preview shows how the Android color 4293364629 looks on a white background.

## Color Contrast Check

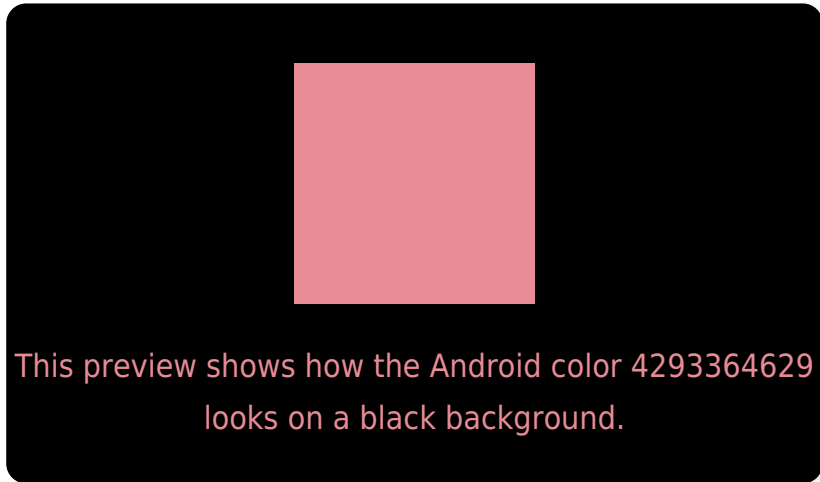
Large Text (above 18pt) WCAG AA × Fail

Any Text WCAG AA × Fail

Large Text (above 18pt) WCAG AAA × Fail

Any Text WCAG AAA × Fail

# Black Background



## Color Contrast Check

Large Text (above 18pt) WCAG AA ✓ Pass

Any Text WCAG AA ✓ Pass

Large Text (above 18pt) WCAG AAA ✓ Pass

Any Text WCAG AAA ✓ Pass

If you want to check with other color combinations, try the [Color Contrast Checker](#).



# Android 4293364629 Background



This preview shows how black text looks on a background with the Android color 4293364629.



This preview shows how white text looks on a background with the Android color 4293364629.

# Color Blindness Simulation

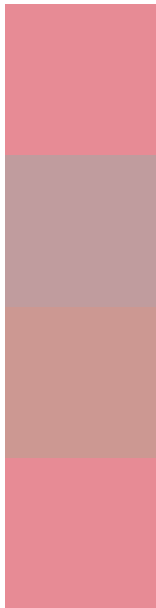
Color vision deficiency is a very complex topic, and I could not describe the different causes any better than Wikipedia does, so if you want to learn more, you should check out their [article about color blindness](#).

## Dichromacy





# Trichromacy



**Original Color**  
4293364629

**Protanomaly**  
4290813086

**Deuteranomaly**  
4291598482

**Tritanomaly**  
4293364629

# Monochromacy



**Original Color**  
4293364629

**Achromatopsia**  
4289243304

**Achromatomaly**  
4290747809

# CSS Examples

## Text

The CSS property to change the color of the text to Android 4293364629 is called "color". The color property can be set on classes, ids or directly on the HTML element.

This example shows how text in the color `rgb(231, 139, 149)` looks like.

```
.text, #text, p{  
    color:rgb(231, 139, 149)  
}
```

If you want to add a text shadow in that color use the text-shadow property, you can generate a text shadow directly with our [CSS Text Shadow Generator](#).

Here you see how black text with a 4 pixel rgb(231, 139, 149) colored shadow looks like.

```
.shadow{ text-shadow: 4px 4px 2px rgb(231, 139, 149) }
```

## Border

The CSS property to change the border of an element to Android 4293364629 is called "border". The border property can be set on classes, ids or directly on the HTML element.

This example shows the color as border, it can be applied via the CSS property "border" or "border-color".

```
.border, #border, table{ border:4px solid rgb(231, 139, 149) }
```

If only the border color should be changed use the property `border-color`.

```
.border{ border-color:rgb(231, 139, 149) }
```

If you want to add a box shadow in that color use:

Here you see how a box with a 4 pixel `rgb(231, 139, 149)` colored shadow looks like.

```
.boxshadow{ -moz-box-shadow:4px 4px 4px 4px rgb(231, 139, 149); -webkit-box-shadow:4px 4px 4px 4px rgb(231, 139, 149); box-shadow:4px 4px 4px 4px rgb(231, 139, 149) }
```

# Background

The CSS property to change the background color of an element to Android 4293364629 is called "background". The background property can be set on classes, ids or directly on the HTML element.

```
.background, #background, body{  
background: rgb(231, 139, 149) }
```

If only the background color should be changed can be used:

```
.background{ background-color: rgb(231,  
139, 149) }
```

This example shows the color as background, it is applied via the CSS property "background".

To optimize and compress your CSS code, you can use our [online CSS compressor and optimizer](#) based on csstidy. If you want to create a linear or radial gradient as background or border, check our [CSS Gradient Generator](#).



Hey! You found this booklet interesting? Support Converting Colors with the new Membership Option!

The pro membership hides all ads, plus gives you double the colors in the color bucket, and more awesome pro features!

**[Learn more, Memberships starting at \\$2.50/m!](#)**

**Follow me  
on Twitter!**

@ConvertingColor