

Converting Colors

Android(4293366690)

Have a look what the booklet for
Android(4293366690) contains.

Android(4293366690)	3
<i>Conversions</i>	4
<i>Details</i>	6
<i>Harmonies</i>	11
<i>Previews</i>	23
<i>Color Blindness Simulation</i>	26
<i>CSS Examples</i>	29

Color

Android(4293366690)

Conversions

Conversions Part 1

Format	Color
Hex	E793A2
RGB	231, 147, 162
RGB Percent	91%, 58%, 64%
CMY	0.0941, 0.4235, 0.3647
CMYK	0.00, 0.36, 0.30, 0.09
HSL	349°, 64%, 74%
HSV	349°, 36%, 91%
XYZ	49.9103, 40.4650, 39.3624
YIQ	173.8260, 45.2490, 22.4730

Conversions

Conversions Part 2

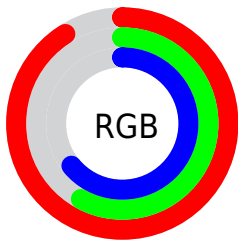
Format	Color
R_{YB}	231, 147, 162
Decimal	15176610
CIE _{Lab}	69.80, 33.56, 5.46
CIE _{LCh}	70, 34.001, 9.233
Yxy	40.4650, 0.3847, 0.3119
Android (android.graphics.Color)	4293366690 (0xFFE793A2)
YUV	173.8260, -5.8302, 50.1416
Hunter-Lab	63.6121, 28.7306, 7.8406

Details

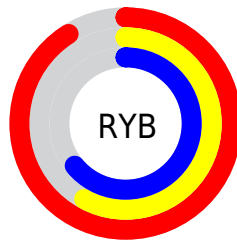
The Android color `4293366690` is a light color, and the websafe version is hex `FF9999`. A complement of this color would be `4287883224`, and the grayscale version is `4289638062`.

A 20% lighter version of the original color is `4294953689`, and `4289552239` is the 20% darker color. If you saturate the color by 10%, you get `4293360783`, and if you desaturate by 10%, it is `4293372597`.

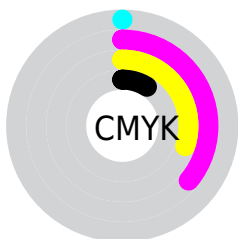
Distribution



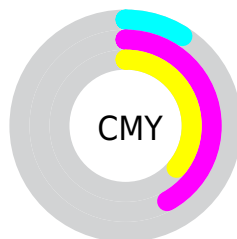
- Red (91%)
- Green (58%)
- Blue (64%)



- Red (91%)
- Yellow (58%)
- Blue (64%)



- Cyan (0%)
- Magenta (36%)
- Yellow (30%)
- Black (9%)



- Cyan (9%)
- Magenta (42%)
- Yellow (36%)

Brightness & Saturation Gradients

These gradients show how the Android color 4293366690 changes by changing the brightness by 10 percent. The first figure shows a shift by +10% for each color and the second figure -10%.

Similar to the brightness gradients but the following saturation gradients show a change of the Android color 4293366690 by changing the saturation by 10% instead.

 4293366690

 4293366690

4294967295

 4291459464

 4294953689

 4289552239

 4294960885

 4287776342

 4285935167

 4284224809

 4282515477

 4281139201

 4278190080

 4293366690

 4293366690

 4293360783

 4293372597

 4293354876

 4293378504

 4293348969

 4293384411

 4293343062

 4293390318

 4293336899

 4293394431

 4293330992

 4293328937

Harmonies

Analogous

The Analogous color harmony consists of three colors that are next to each other on the color wheel.



4292449985



4293366690



4293171333

Triad

The Triadic color harmony groups three colors that are evenly spaced from another and form a triangle on the color wheel.



4293366690



4287935610



4284396771

Complementary

The Complementary color scheme is a pair of colors which are on the opposite of each other on the color wheel.



4293366690



4287883224

Split Complementary

Split-complementary colors differ from the complementary color scheme. The scheme consists of three colors, the original color and two neighbors of the complement color.



4282235345



4293366690



4285512340

Square

The Square scheme is like the rectangle color scheme, but the four colors are evenly spaced on the color wheel.



4293366690



4290161773



4283153331



4287605479

Rectangle

The Rectangle color scheme consists of four colors that form a rectangle on the color wheel.



4293366690



4292451958



4283153331



4283479775

Sweetspot

The Sweet Spot groups the original color and five complimentary colors.



4293366690



4294960104



4292383719



4286607218



4278190080



4286611584

Same Dimension

The Same Dimension uses a secret algorithm to generate beautiful new colors.



4293366690



4294938531



4293373587



4285753193



4289921056



4281532425

Inverse Universe

The Inverse Universe completely reimagines the original color for something new.



4293366690



4294938531



4287876327



4285753193



4289921056



4281532425

Previews

White Background



This preview shows how the Android color 4293366690 looks on a white background.

Color Contrast Check

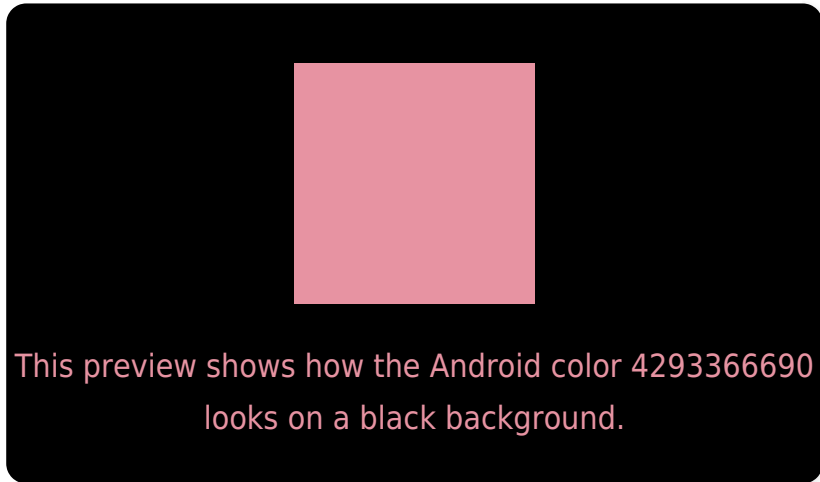
Large Text (above 18pt) WCAG AA × Fail

Any Text WCAG AA × Fail

Large Text (above 18pt) WCAG AAA × Fail

Any Text WCAG AAA × Fail

Black Background



Color Contrast Check

Large Text (above 18pt) WCAG AA ✓ Pass

Any Text WCAG AA ✓ Pass

Large Text (above 18pt) WCAG AAA ✓ Pass

Any Text WCAG AAA ✓ Pass

If you want to check with other color combinations, try the [Color Contrast Checker](#).

Android 4293366690 Background



This preview shows how black text looks on a background with the Android color 4293366690.




This preview shows how white text looks on a background with the Android color 4293366690.

Color Blindness Simulation

Color vision deficiency is a very complex topic, and I could not describe the different causes any better than Wikipedia does, so if you want to learn more, you should check out their [article about color blindness](#).

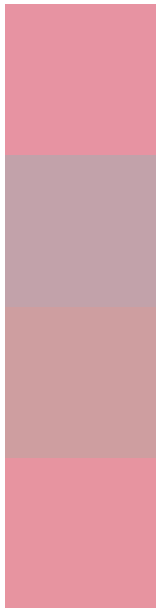
Dichromacy





Tritanopia
4293366943

Trichromacy



Original Color
4293366690

Protanomaly
4290945706

Deuteranomaly
4291731104

Tritanomaly
4293366944

Monochromacy



Original Color
4293366690

Achromatopsia
4289638062

Achromatomaly
4291011754

CSS Examples

Text

The CSS property to change the color of the text to Android 4293366690 is called "color". The color property can be set on classes, ids or directly on the HTML element.

This example shows how text in the color `rgb(231, 147, 162)` looks like.

```
.text, #text, p{  
    color:rgb(231, 147, 162)  
}
```

If you want to add a text shadow in that color use the text-shadow property, you can generate a text shadow directly with our [CSS Text Shadow Generator](#).

Here you see how black text with a 4 pixel rgb(231, 147, 162) colored shadow looks like.

```
.shadow{ text-shadow: 4px 4px 2px rgb(231, 147, 162) }
```

Border

The CSS property to change the border of an element to Android 4293366690 is called "border". The border property can be set on classes, ids or directly on the HTML element.

This example shows the color as border, it can be applied via the CSS property "border" or "border-color".

```
.border, #border, table{ border:4px solid rgb(231, 147, 162) }
```

If only the border color should be changed use the property `border-color`.

```
.border{ border-color:rgb(231, 147, 162) }
```

If you want to add a box shadow in that color use:

Here you see how a box with a 4 pixel `rgb(231, 147, 162)` colored shadow looks like.

```
.boxshadow{ -moz-box-shadow:4px 4px 4px  
4px rgb(231, 147, 162); -webkit-box-  
shadow:4px 4px 4px 4px rgb(231, 147, 162);  
box-shadow:4px 4px 4px 4px rgb(231, 147,  
162) }
```

Background

The CSS property to change the background color of an element to Android 4293366690 is called "background". The background property can be set on classes, ids or directly on the HTML element.

```
.background, #background, body{  
background: rgb(231, 147, 162) }
```

If only the background color should be changed can be used:

```
.background{ background-color: rgb(231,  
147, 162) }
```

This example shows the color as background, it is applied via the CSS property "background".

To optimize and compress your CSS code, you can use our [online CSS compressor and optimizer](#) based on csstidy. If you want to create a linear or radial gradient as background or border, check our [CSS Gradient Generator](#).

Hey! You found this booklet interesting? Support Converting Colors with the new Membership Option!

The pro membership hides all ads, plus gives you double the colors in the color bucket, and more awesome pro features!

[Learn more, Memberships starting at \\$2.50/m!](#)

**Follow me
on Twitter!**

@ConvertingColor