

Converting Colors

Android(4293370027)

Have a look what the booklet for
Android(4293370027) contains.

Android(4293370027)	3
<i>Conversions</i>	4
<i>Details</i>	6
<i>Harmonies</i>	11
<i>Previews</i>	23
<i>Color Blindness Simulation</i>	26
<i>CSS Examples</i>	29

Color

Android(4293370027)

Conversions

Conversions Part 1

Format	Color
Hex	E7A0AB
RGB	231, 160, 171
RGB Percent	91%, 63%, 67%
CMY	0.0941, 0.3725, 0.3294
CMYK	0.00, 0.31, 0.26, 0.09
HSL	351°, 60%, 77%
HSV	351°, 31%, 91%
XYZ	52.8765, 45.0708, 44.4407
YIQ	182.4830, 38.7850, 18.4730

Conversions

Conversions Part 2

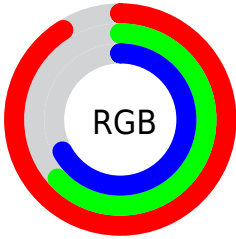
Format	Color
R _Y B	231, 160, 171
Decimal	15179947
CIE Lab	72.94, 27.87, 4.99
CIE LCh	73, 28.311, 10.145
Yxy	45.0708, 0.3714, 0.3165
Android (android.graphics.Color)	4293370027 (0xFFE7A0AB)
YUV	182.4830, -5.6611, 42.5494
Hunter-Lab	67.1348, 23.1037, 7.7466

Details

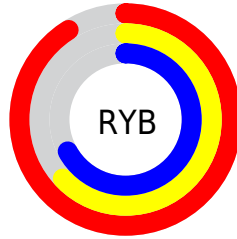
The Android color `4293370027` is a light color, and the websafe version is hex `CC9999`. A complement of this color would be `4288735196`, and the grayscale version is `4290230199`.

A 20% lighter version of the original color is `4294957026`, and `4289621111` is the 20% darker color. If you saturate the color by 10%, you get `4293364119`, and if you desaturate by 10%, it is `4293375935`.

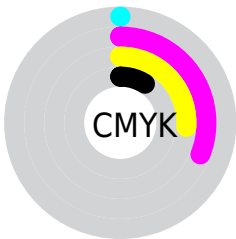
Distribution



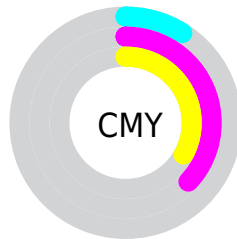
- Red (91%)
- Green (63%)
- Blue (67%)



- Red (91%)
- Yellow (63%)
- Blue (67%)



- Cyan (0%)
- Magenta (31%)
- Yellow (26%)
- Black (9%)



- Cyan (9%)
- Magenta (37%)
- Yellow (33%)

Brightness & Saturation Gradients

These gradients show how the Android color 4293370027 changes by changing the brightness by 10 percent. The first figure shows a shift by +10% for each color and the second figure -10%.

Similar to the brightness gradients but the following saturation gradients show a change of the Android color 4293370027 by changing the saturation by 10% instead.

 4293370027

 4293370027

4294967295

 4291462545

 4294957026

 4289621111

 4294964479

 4287779678

 4286069575

 4284293936

 4282649372

 4281204736

 4278190080

 4293370027

 4293370027

 4293364119

 4293375935

 4293358212

 4293381842

 4293352304

 4293387750

 4293346397

 4293393657

 4293340233

 4293394431

 4293334326

 4293328932

Harmonies

Analogous

The Analogous color harmony consists of three colors that are next to each other on the color wheel.



4292584133



4293370027



4293174419

Triad

The Triadic color harmony groups three colors that are evenly spaced from another and form a triangle on the color wheel.



4293370027



4288723851



4286298851

Complementary

The Complementary color scheme is a pair of colors which are on the opposite of each other on the color wheel.



4293370027



4288735196

Split Complementary

Split-complementary colors differ from the complementary color scheme. The scheme consists of three colors, the original color and two neighbors of the complement color.



4284858580



4293370027



4286759073

Square

The Square scheme is like the rectangle color scheme, but the four colors are evenly spaced on the color wheel.



4293370027



4290622592



4285186747



4288656102

Rectangle

The Rectangle color scheme consists of four colors that form a rectangle on the color wheel.



4293370027



4292585863



4285186747



4285644255

Sweetspot

The Sweet Spot groups the original color and five complimentary colors.



4293370027



4294961388



4292583655



4286607732



4278190080



4286611584

Same Dimension

The Same Dimension uses a secret algorithm to generate beautiful new colors.



4293370027



4294943151



4293376160



4285753193



4289921052



4281532424

Inverse Universe

The Inverse Universe completely reimagines the original color for something new.



4293370027



4294943151



4288729063



4285753193



4289921052



4281532424

Previews

White Background



This preview shows how the Android color 4293370027 looks on a white background.

Color Contrast Check

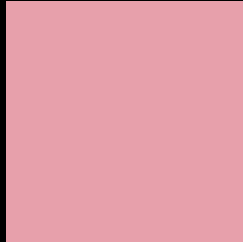
Large Text (above 18pt) WCAG AA × Fail

Any Text WCAG AA × Fail

Large Text (above 18pt) WCAG AAA × Fail

Any Text WCAG AAA × Fail

Black Background



This preview shows how the Android color 4293370027 looks on a black background.

Color Contrast Check

Large Text (above 18pt) WCAG AA ✓ Pass

Any Text WCAG AA ✓ Pass

Large Text (above 18pt) WCAG AAA ✓ Pass

Any Text WCAG AAA ✓ Pass

If you want to check with other color combinations, try the [Color Contrast Checker](#).

Android 4293370027 Background



This preview shows how black text looks on a background with the Android color 4293370027.



This preview shows how white text looks on a background with the Android color 4293370027.

Color Blindness Simulation

Color vision deficiency is a very complex topic, and I could not describe the different causes any better than Wikipedia does, so if you want to learn more, you should check out their [article about color blindness](#).

Dichromacy

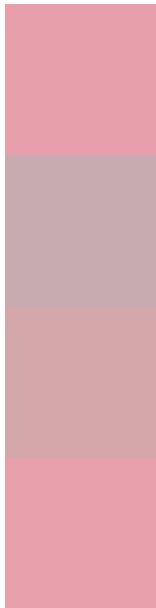


Original Color
4293370027

Protanopia
4290163381

Deuteranopia
4291407273

Trichromacy



Original Color
4293370027

Protanomaly
4291341233

Deuteranomaly
4292126890

Tritanomaly
4293370028

Monochromacy



Original Color
4293370027

Achromatopsia
4290164406

Achromatomaly
4291342002

CSS Examples

Text

The CSS property to change the color of the text to Android 4293370027 is called "color". The color property can be set on classes, ids or directly on the HTML element.

This example shows how text in the color `rgb(231, 160, 171)` looks like.

```
.text, #text, p{  
    color:rgb(231, 160, 171)  
}
```

If you want to add a text shadow in that color use the text-shadow property, you can generate a text shadow directly with our [CSS Text Shadow Generator](#).

Here you see how black text with a 4 pixel rgb(231, 160, 171) colored shadow looks like.

```
.shadow{ text-shadow: 4px 4px 2px rgb(231, 160, 171) }
```

Border

The CSS property to change the border of an element to Android 4293370027 is called "border". The border property can be set on classes, ids or directly on the HTML element.

This example shows the color as border, it can be applied via the CSS property "border" or "border-color".

```
.border, #border, table{ border:4px solid rgb(231, 160, 171) }
```

If only the border color should be changed use the property `border-color`.

```
.border{ border-color:rgb(231, 160, 171) }
```

If you want to add a box shadow in that color use:

Here you see how a box with a 4 pixel `rgb(231, 160, 171)` colored shadow looks like.

```
.boxshadow{ -moz-box-shadow:4px 4px 4px 4px rgb(231, 160, 171); -webkit-box-shadow:4px 4px 4px 4px rgb(231, 160, 171); box-shadow:4px 4px 4px 4px rgb(231, 160, 171) }
```

Background

The CSS property to change the background color of an element to Android 4293370027 is called "background". The background property can be set on classes, ids or directly on the HTML element.

```
.background, #background, body{  
background: rgb(231, 160, 171) }
```

If only the background color should be changed can be used:

```
.background{ background-color: rgb(231,  
160, 171) }
```

This example shows the color as background, it is applied via the CSS property "background".

To optimize and compress your CSS code, you can use our [online CSS compressor and optimizer](#) based on csstidy. If you want to create a linear or radial gradient as background or border, check our [CSS Gradient Generator](#).

Hey! You found this booklet interesting? Support Converting Colors with the new Membership Option!

The pro membership hides all ads, plus gives you double the colors in the color bucket, and more awesome pro features!

[Learn more, Memberships starting at \\$2.50/m!](#)

**Follow me
on Twitter!**

@ConvertingColor