

Converting Colors

Android(4293373371)

Have a look what the booklet for
Android(4293373371) contains.

Android(4293373371)	3
<i>Conversions</i>	4
<i>Details</i>	6
<i>Harmonies</i>	11
<i>Previews</i>	23
<i>Color Blindness Simulation</i>	26
<i>CSS Examples</i>	29

Color

Android(4293373371)

Conversions

Conversions Part 1

Format	Color
Hex	E7ADBB
RGB	231, 173, 187
RGB Percent	91%, 68%, 73%
CMY	0.0941, 0.3216, 0.2667
CMYK	0.00, 0.25, 0.19, 0.09
HSL	346°, 55%, 79%
HSV	346°, 25%, 91%
XYZ	56.8682, 50.4639, 53.7569
YIQ	191.9380, 30.0740, 16.6500

Conversions

Conversions Part 2

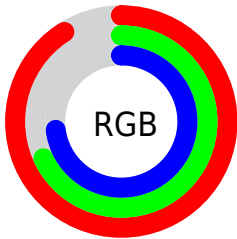
Format	Color
R _Y B	231, 173, 187
Decimal	15183291
CIE Lab	76.35, 23.25, 1.16
CIE LCh	76, 23.277, 2.851
Yxy	50.4639, 0.3530, 0.3133
Android (android.graphics.Color)	4293373371 (0xFFE7ADBB)
YUV	191.9380, -2.4344, 34.2574
Hunter-Lab	71.0380, 18.5786, 4.8597

Details

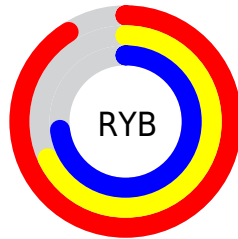
The Android color `4293373371` is a light color, and the websafe version is hex `CC9999`. A complement of this color would be `4289587161`, and the grayscale version is `4290822336`.

A 20% lighter version of the original color is `4294960627`, and `4289689734` is the 20% darker color. If you saturate the color by 10%, you get `4293367465`, and if you desaturate by 10%, it is `4293379277`.

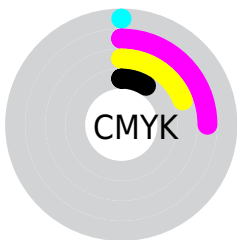
Distribution



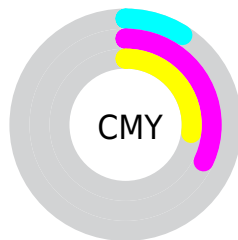
- Red (91%)
- Green (68%)
- Blue (73%)



- Red (91%)
- Yellow (68%)
- Blue (73%)



- Cyan (0%)
- Magenta (25%)
- Yellow (19%)
- Black (9%)



- Cyan (9%)
- Magenta (32%)
- Yellow (27%)

Brightness & Saturation Gradients

These gradients show how the Android color 4293373371 changes by changing the brightness by 10 percent. The first figure shows a shift by +10% for each color and the second figure -10%.

Similar to the brightness gradients but the following saturation gradients show a change of the Android color 4293373371 by changing the saturation by 10% instead.

 4293373371

 4293373371

4294967295

 4291465888

 4294960627

 4289689734

 4287848301

 4286138196

 4284428349

 4282784040

 4281271059

 4279369728

 4278190080

 4293373371

 4293373371

 4293367465

 4293379277

 4293361560

 4293385182

 4293355654

 4293391088

 4293349749

 4293394431

 4293343843

 4293337682

 4293331776

 4293328952

Harmonies

Analogous

The Analogous color harmony consists of three colors that are next to each other on the color wheel.



4292522192



4293373371



4293439398

Triad

The Triadic color harmony groups three colors that are evenly spaced from another and form a triangle on the color wheel.



4293373371



4289970840



4287415522

Complementary

The Complementary color scheme is a pair of colors which are on the opposite of each other on the color wheel.



4293373371



4289587161

Split Complementary

Split-complementary colors differ from the complementary color scheme. The scheme consists of three colors, the original color and two neighbors of the complement color.



4286630099



4293373371



4288399272

Square

The Square scheme is like the rectangle color scheme, but the four colors are evenly spaced on the color wheel.



4293373371



4291542161



4287089086



4289117927

Rectangle

The Rectangle color scheme consists of four colors that form a rectangle on the color wheel.



4293373371



4293046939



4287089086



4287022558

Sweetspot

The Sweet Spot groups the original color and five complimentary colors.



4293373371



4294962160



4292455911



4286608246



4278190080



4286611584

Same Dimension

The Same Dimension uses a secret algorithm to generate beautiful new colors.



4293373371



4294947781



4293376941



4285753194



4289921067



4281532428

Inverse Universe

The Inverse Universe completely reimagines the original color for something new.



4293373371



4294947781



4289583591



4285753194



4289921067



4281532428

Previews

White Background



This preview shows how the Android color 4293373371 looks on a white background.

Color Contrast Check

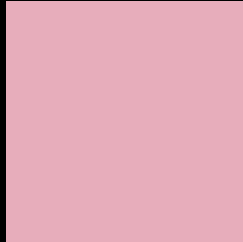
Large Text (above 18pt) WCAG AA × Fail

Any Text WCAG AA × Fail

Large Text (above 18pt) WCAG AAA × Fail

Any Text WCAG AAA × Fail

Black Background



This preview shows how the Android color 4293373371 looks on a black background.

Color Contrast Check

Large Text (above 18pt) WCAG AA ✓ Pass

Any Text WCAG AA ✓ Pass

Large Text (above 18pt) WCAG AAA ✓ Pass

Any Text WCAG AAA ✓ Pass

If you want to check with other color combinations, try the [Color Contrast Checker](#).

Android 4293373371 Background



This preview shows how black text looks on a background with the Android color 4293373371.



This preview shows how white text looks on a background with the Android color 4293373371.

Color Blindness Simulation

Color vision deficiency is a very complex topic, and I could not describe the different causes any better than Wikipedia does, so if you want to learn more, you should check out their [article about color blindness](#).


Dichromacy



Original Color
4293373371

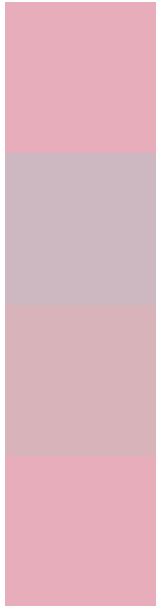
Protanopia
4290690243

Deuteranopia
4291868345



Tritanopia
4293373370

Trichromacy



Original Color
4293373371

Protanomaly
4291672000

Deuteranomaly
4292391866

Tritanomaly
4293373370

Monochromacy



Original Color
4293373371

Achromatopsia
4290822336

Achromatomaly
4291738046

CSS Examples

Text

The CSS property to change the color of the text to Android 4293373371 is called "color". The color property can be set on classes, ids or directly on the HTML element.

This example shows how text in the color `rgb(231, 173, 187)` looks like.

```
.text, #text, p{  
    color:rgb(231, 173, 187)  
}
```

If you want to add a text shadow in that color use the text-shadow property, you can generate a text shadow directly with our [CSS Text Shadow Generator](#).

Here you see how black text with a 4 pixel rgb(231, 173, 187) colored shadow looks like.

```
.shadow{ text-shadow: 4px 4px 2px rgb(231, 173, 187) }
```

Border

The CSS property to change the border of an element to Android 4293373371 is called "border". The border property can be set on classes, ids or directly on the HTML element.

This example shows the color as border, it can be applied via the CSS property "border" or "border-color".

```
.border, #border, table{ border:4px solid rgb(231, 173, 187) }
```

If only the border color should be changed use the property `border-color`.

```
.border{ border-color:rgb(231, 173, 187) }
```

If you want to add a box shadow in that color use:

Here you see how a box with a 4 pixel `rgb(231, 173, 187)` colored shadow looks like.

```
.boxshadow{ -moz-box-shadow:4px 4px 4px  
4px rgb(231, 173, 187); -webkit-box-  
shadow:4px 4px 4px 4px rgb(231, 173, 187);  
box-shadow:4px 4px 4px 4px rgb(231, 173,  
187) }
```

Background

The CSS property to change the background color of an element to Android 4293373371 is called "background". The background property can be set on classes, ids or directly on the HTML element.

```
.background, #background, body{  
background: rgb(231, 173, 187) }
```

If only the background color should be changed can be used:

```
.background{ background-color: rgb(231,  
173, 187) }
```

This example shows the color as background, it is applied via the CSS property "background".

To optimize and compress your CSS code, you can use our [online CSS compressor and optimizer](#) based on csstidy. If you want to create a linear or radial gradient as background or border, check our [CSS Gradient Generator](#).

Hey! You found this booklet interesting? Support Converting Colors with the new Membership Option!

The pro membership hides all ads, plus gives you double the colors in the color bucket, and more awesome pro features!

[Learn more, Memberships starting at \\$2.50/m!](#)

**Follow me
on Twitter!**

@ConvertingColor