

Converting Colors

Android(4293376947)

Have a look what the booklet for
Android(4293376947) contains.

Android(4293376947)	3
<i>Conversions</i>	4
<i>Details</i>	6
<i>Harmonies</i>	11
<i>Previews</i>	23
<i>Color Blindness Simulation</i>	26
<i>CSS Examples</i>	29

Color

Android(4293376947)

Conversions

Conversions Part 1

Format	Color
Hex	E7BBB3
RGB	231, 187, 179
RGB Percent	91%, 73%, 70%
CMY	0.0941, 0.2667, 0.2980
CMYK	0.00, 0.19, 0.23, 0.09
HSL	9°, 52%, 80%
HSV	9°, 23%, 91%
XYZ	58.8620, 55.7842, 50.3129
YIQ	199.2440, 28.7920, 6.8400

Conversions

Conversions Part 2

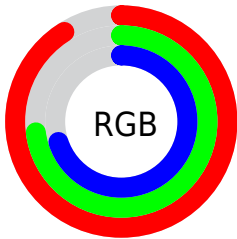
Format	Color
R _Y B	231, 188, 179
Decimal	15186867
CIE Lab	79.49, 14.59, 10.02
CIE LCh	79, 17.699, 34.474
Yxy	55.7842, 0.3568, 0.3382
Android (android.graphics.Color)	4293376947 (0xFFE7BBB3)
YUV	199.2440, -9.9803, 27.8500
Hunter-Lab	74.6889, 9.9697, 12.3425

Details

The Android color `4293376947` is a light color, and the websafe version is hex `FFCCCC`. A complement of this color would be `4289978343`, and the grayscale version is `4291282887`.

A 20% lighter version of the original color is `4294964203`, and `4289693310` is the 20% darker color. If you saturate the color by 10%, you get `4293371804`, and if you desaturate by 10%, it is `4293382090`.

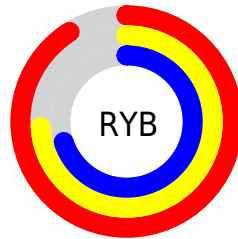
Distribution



Red (91%)

Green (73%)

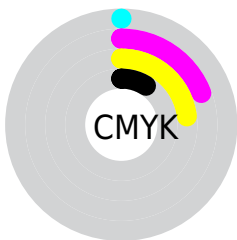
Blue (70%)



Red (91%)

Yellow (74%)

Blue (70%)

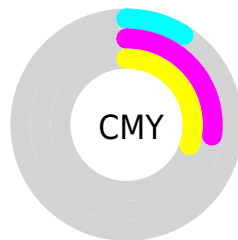


Cyan (0%)

Magenta (19%)

Yellow (23%)

Black (9%)



Cyan (9%)

Magenta (27%)

Yellow (30%)

Brightness & Saturation Gradients


These gradients show how the Android color 4293376947 changes by changing the brightness by 10 percent. The first figure shows a shift by +10% for each color and the second figure -10%.

Similar to the brightness gradients but the following saturation gradients show a change of the Android color 4293376947 by changing the saturation by 10% instead.

 4293376947

 4293376947

4294967295

 4291535000

 4294964203

 4289693310

 4287917157

 4286141517

 4284497207

 4282852897

 4281274891

 4279828481

 4278190080

 4293376947

 4293376947

 4293371804

 4293382090

 4293366917

 4293386977

 4293361774

 4293392120

 4293356887

 4293394431

 4293351743

 4293346856

 4293341713

 4293338112

Harmonies

Analogous

The Analogous color harmony consists of three colors that are next to each other on the color wheel.



4293376707



4293376947



4292853672

Triad

The Triadic color harmony groups three colors that are evenly spaced from another and form a triangle on the color wheel.



4293376947



4289449398



4290168549

Complementary

The Complementary color scheme is a pair of colors which are on the opposite of each other on the color wheel.



4293376947



4289978343

Split Complementary

Split-complementary colors differ from the complementary color scheme. The scheme consists of three colors, the original color and two neighbors of the complement color.



4288924642



4293376947



4288532423

Square

The Square scheme is like the rectangle color scheme, but the four colors are evenly spaced on the color wheel.



4293376947



4290628266



4288335575



4291543264

Rectangle

The Rectangle color scheme consists of four colors that form a rectangle on the color wheel.



4293376947



4292199332



4288335575



4289710053

Sweetspot

The Sweet Spot groups the original color and five complimentary colors.



4293376947



4294963437



4293374943



4286609269



4278190080



4286611584

Same Dimension

The Same Dimension uses a secret algorithm to generate beautiful new colors.



4293376947



4294952378



4293383603



4285753703



4289927936



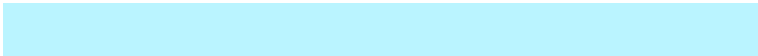
4281534464

Inverse Universe

The Inverse Universe completely reimagines the original color for something new.



4289978343



4290442495



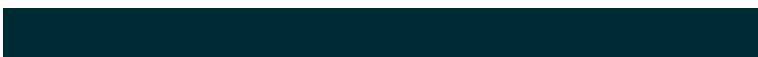
4289971687



4284969331



4278228915



4278201139

Previews

White Background



This preview shows how the Android color 4293376947 looks on a white background.

Color Contrast Check

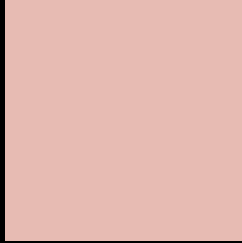
Large Text (above 18pt) WCAG AA × Fail

Any Text WCAG AA × Fail

Large Text (above 18pt) WCAG AAA × Fail

Any Text WCAG AAA × Fail

Black Background



This preview shows how the Android color 4293376947 looks on a black background.

Color Contrast Check

Large Text (above 18pt) WCAG AA ✓ Pass

Any Text WCAG AA ✓ Pass

Large Text (above 18pt) WCAG AAA ✓ Pass

Any Text WCAG AAA ✓ Pass

If you want to check with other color combinations, try the [Color Contrast Checker](#).

Android 4293376947 Background



This preview shows how black text looks on a background with the Android color 4293376947.



This preview shows how white text looks on a background with the Android color 4293376947.

Color Blindness Simulation

Color vision deficiency is a very complex topic, and I could not describe the different causes any better than Wikipedia does, so if you want to learn more, you should check out their [article about color blindness](#).


Dichromacy



Original Color
4293376947

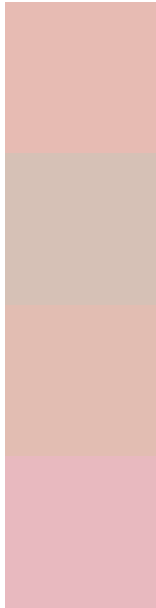
Protanopia
4291609784

Deuteranopia
4292853426



Tritanopia
4293507270

Trichromacy



Original Color
4293376947

Protanomaly
4292264374

Deuteranomaly
4293049778

Tritanomaly
4293441983

Monochromacy



Original Color
4293376947

Achromatopsia
4291282887

Achromatomaly
4292068288

CSS Examples

Text

The CSS property to change the color of the text to Android 4293376947 is called "color". The color property can be set on classes, ids or directly on the HTML element.

This example shows how text in the color `rgb(231, 187, 179)` looks like.

```
.text, #text, p{  
    color:rgb(231, 187, 179)  
}
```

If you want to add a text shadow in that color use the text-shadow property, you can generate a text shadow directly with our [CSS Text Shadow Generator](#).

Here you see how black text with a 4 pixel rgb(231, 187, 179) colored shadow looks like.

```
.shadow{ text-shadow: 4px 4px 2px rgb(231, 187, 179) }
```

Border

The CSS property to change the border of an element to Android 4293376947 is called "border". The border property can be set on classes, ids or directly on the HTML element.

This example shows the color as border, it can be applied via the CSS property "border" or "border-color".

```
.border, #border, table{ border:4px solid rgb(231, 187, 179) }
```

If only the border color should be changed use the property `border-color`.

```
.border{ border-color:rgb(231, 187, 179) }
```

If you want to add a box shadow in that color use:

Here you see how a box with a 4 pixel `rgb(231, 187, 179)` colored shadow looks like.

```
.boxshadow{ -moz-box-shadow:4px 4px 4px  
4px rgb(231, 187, 179); -webkit-box-  
shadow:4px 4px 4px 4px rgb(231, 187, 179);  
box-shadow:4px 4px 4px 4px rgb(231, 187,  
179) }
```

Background

The CSS property to change the background color of an element to Android 4293376947 is called "background". The background property can be set on classes, ids or directly on the HTML element.

```
.background, #background, body{  
background: rgb(231, 187, 179) }
```

If only the background color should be changed can be used:

```
.background{ background-color: rgb(231,  
187, 179) }
```

This example shows the color as background, it is applied via the CSS property "background".

To optimize and compress your CSS code, you can use our [online CSS compressor and optimizer](#) based on csstidy. If you want to create a linear or radial gradient as background or border, check our [CSS Gradient Generator](#).

Hey! You found this booklet interesting? Support Converting Colors with the new Membership Option!

The pro membership hides all ads, plus gives you double the colors in the color bucket, and more awesome pro features!

[Learn more, Memberships starting at \\$2.50/m!](#)

**Follow me
on Twitter!**

@ConvertingColor