

Converting Colors

Android(4293377467)

Have a look what the booklet for
Android(4293377467) contains.

Android(4293377467)	3
<i>Conversions</i>	4
<i>Details</i>	6
<i>Harmonies</i>	11
<i>Previews</i>	23
<i>Color Blindness Simulation</i>	26
<i>CSS Examples</i>	29

Color

Android(4293377467)

Conversions

Conversions Part 1

Format	Color
Hex	E7BDBB
RGB	231, 189, 187
RGB Percent	91%, 74%, 73%
CMY	0.0941, 0.2588, 0.2667
CMYK	0.00, 0.18, 0.19, 0.09
HSL	3°, 48%, 82%
HSV	3°, 19%, 91%
XYZ	60.1222, 56.9720, 54.8416
YIQ	201.3300, 25.6740, 8.2820

Conversions

Conversions Part 2

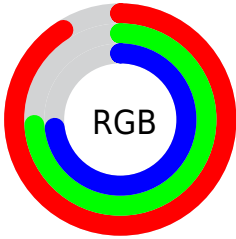
Format	Color
R _Y B	231, 189, 187
Decimal	15187387
CIE Lab	80.16, 14.71, 6.67
CIE LCh	80, 16.152, 24.397
Yxy	56.9720, 0.3497, 0.3314
Android (android.graphics.Color)	4293377467 (0xFFE7BDBB)
YUV	201.3300, -7.0647, 26.0206
Hunter-Lab	75.4798, 10.0918, 9.7573

Details

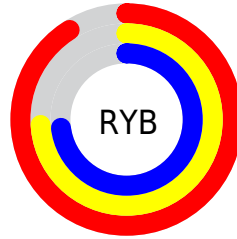
The Android color `4293377467` is a light color, and the websafe version is hex `FFCCCC`. A complement of this color would be `4290504167`, and the grayscale version is `4291414473`.

A 20% lighter version of the original color is `4294964723`, and `4289693830` is the 20% darker color. If you saturate the color by 10%, you get `4293371812`, and if you desaturate by 10%, it is `4293383122`.

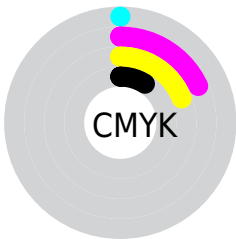
Distribution



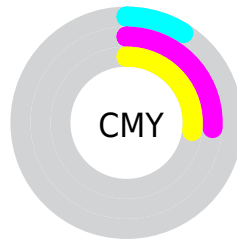
- Red (91%)
- Green (74%)
- Blue (73%)



- Red (91%)
- Yellow (74%)
- Blue (73%)



- Cyan (0%)
- Magenta (18%)
- Yellow (19%)
- Black (9%)



- Cyan (9%)
- Magenta (26%)
- Yellow (27%)

Brightness & Saturation Gradients

These gradients show how the Android color 4293377467 changes by changing the brightness by 10 percent. The first figure shows a shift by +10% for each color and the second figure -10%.

Similar to the brightness gradients but the following saturation gradients show a change of the Android color 4293377467 by changing the saturation by 10% instead.

 4293377467

 4293377467

4294967295

 4291535520

 4294964723

 4289693830

 4287917677

 4286207572

 4284497469

 4282918952

 4281340691

 4280025089

 4278190080

 4293377467

 4293377467

 4293371812

 4293383122

 4293366157

 4293388777

 4293360502

 4293394431

 4293354847

 4293349192

 4293343536

 4293337881

 4293332226

 4293331712

Harmonies

Analogous

The Analogous color harmony consists of three colors that are next to each other on the color wheel.



4293180874



4293377467



4293050543

Triad

The Triadic color harmony groups three colors that are evenly spaced from another and form a triangle on the color wheel.



4293377467



4290039477



4289972708

Complementary

The Complementary color scheme is a pair of colors which are on the opposite of each other on the color wheel.



4293377467



4290504167

Split Complementary

Split-complementary colors differ from the complementary color scheme. The scheme consists of three colors, the original color and two neighbors of the complement color.



4288990687



4293377467



4289122499

Square

The Square scheme is like the rectangle color scheme, but the four colors are evenly spaced on the color wheel.



4293377467



4291218091



4288729043



4291216610

Rectangle

The Rectangle color scheme consists of four colors that form a rectangle on the color wheel.



4293377467



4292527018



4288729043



4289580003

Sweetspot

The Sweet Spot groups the original color and five complimentary colors.



4293377467



4294963440



4293376998



4286609271



4278190080



4286611584

Same Dimension

The Same Dimension uses a secret algorithm to generate beautiful new colors.



4293377467



4294952900



4293382843



4285753447



4289923072



4281532928

Inverse Universe

The Inverse Universe completely reimagines the original color for something new.



4290504167



4291099903



4290498791



4284969587



4278233779



4278202675

Previews

White Background



This preview shows how the Android color 4293377467 looks on a white background.

Color Contrast Check

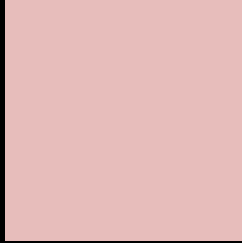
Large Text (above 18pt) WCAG AA × Fail

Any Text WCAG AA × Fail

Large Text (above 18pt) WCAG AAA × Fail

Any Text WCAG AAA × Fail

Black Background



This preview shows how the Android color 4293377467 looks on a black background.

Color Contrast Check

Large Text (above 18pt) WCAG AA ✓ Pass

Any Text WCAG AA ✓ Pass

Large Text (above 18pt) WCAG AAA ✓ Pass

Any Text WCAG AAA ✓ Pass

If you want to check with other color combinations, try the [Color Contrast Checker](#).

Android 4293377467 Background



This preview shows how black text looks on a background with the Android color 4293377467.



This preview shows how white text looks on a background with the Android color 4293377467.

Color Blindness Simulation

Color vision deficiency is a very complex topic, and I could not describe the different causes any better than Wikipedia does, so if you want to learn more, you should check out their [article about color blindness](#).


Dichromacy



Original Color
4293377467

Protanopia
4291610304

Deuteranopia
4292853946



Tritanopia
4293508041

Trichromacy



Original Color
4293377467

Protanomaly
4292264894

Deuteranomaly
4293050298

Tritanomaly
4293442756

Monochromacy



Original Color
4293377467

Achromatopsia
4291414473

Achromatomaly
4292134340

CSS Examples

Text

The CSS property to change the color of the text to Android 4293377467 is called "color". The color property can be set on classes, ids or directly on the HTML element.

This example shows how text in the color `rgb(231, 189, 187)` looks like.

```
.text, #text, p{  
    color:rgb(231, 189, 187)  
}
```

If you want to add a text shadow in that color use the text-shadow property, you can generate a text shadow directly with our [CSS Text Shadow Generator](#).

Here you see how black text with a 4 pixel rgb(231, 189, 187) colored shadow looks like.

```
.shadow{ text-shadow: 4px 4px 2px rgb(231, 189, 187) }
```

Border

The CSS property to change the border of an element to Android 4293377467 is called "border". The border property can be set on classes, ids or directly on the HTML element.

This example shows the color as border, it can be applied via the CSS property "border" or "border-color".

```
.border, #border, table{ border:4px solid rgb(231, 189, 187) }
```

If only the border color should be changed use the property `border-color`.

```
.border{ border-color:rgb(231, 189, 187) }
```

If you want to add a box shadow in that color use:

Here you see how a box with a 4 pixel `rgb(231, 189, 187)` colored shadow looks like.

```
.boxshadow{ -moz-box-shadow:4px 4px 4px  
4px rgb(231, 189, 187); -webkit-box-  
shadow:4px 4px 4px 4px rgb(231, 189, 187);  
box-shadow:4px 4px 4px 4px rgb(231, 189,  
187) }
```

Background

The CSS property to change the background color of an element to Android 4293377467 is called "background". The background property can be set on classes, ids or directly on the HTML element.

```
.background, #background, body{  
background: rgb(231, 189, 187) }
```

If only the background color should be changed can be used:

```
.background{ background-color: rgb(231,  
189, 187) }
```

This example shows the color as background, it is applied via the CSS property "background".

To optimize and compress your CSS code, you can use our [online CSS compressor and optimizer](#) based on csstidy. If you want to create a linear or radial gradient as background or border, check our [CSS Gradient Generator](#).

Hey! You found this booklet interesting? Support Converting Colors with the new Membership Option!

The pro membership hides all ads, plus gives you double the colors in the color bucket, and more awesome pro features!

[Learn more, Memberships starting at \\$2.50/m!](#)

**Follow me
on Twitter!**

@ConvertingColor