

Converting Colors

Android(4293379267)

Have a look what the booklet for
Android(4293379267) contains.

Android(4293379267)	3
<i>Conversions</i>	4
<i>Details</i>	6
<i>Harmonies</i>	11
<i>Previews</i>	23
<i>Color Blindness Simulation</i>	26
<i>CSS Examples</i>	29

Color

Android(4293379267)

Conversions

Conversions Part 1

Format	Color
Hex	E7C4C3
RGB	231, 196, 195
RGB Percent	91%, 77%, 76%
CMY	0.0941, 0.2314, 0.2353
CMYK	0.00, 0.15, 0.16, 0.09
HSL	2°, 43%, 84%
HSV	2°, 16%, 91%
XYZ	62.5453, 60.4089, 59.9934
YIQ	206.3510, 21.1810, 7.1090

Conversions

Conversions Part 2

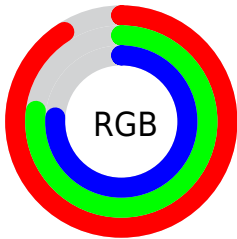
Format	Color
R _Y B	231, 196, 195
Decimal	15189187
CIE Lab	82.06, 12.23, 5.11
CIE LCh	82, 13.251, 22.667
Yxy	60.4089, 0.3419, 0.3302
Android (android.graphics.Color)	4293379267 (0xFFE7C4C3)
YUV	206.3510, -5.5960, 21.6172
Hunter-Lab	77.7232, 7.6267, 8.6412

Details

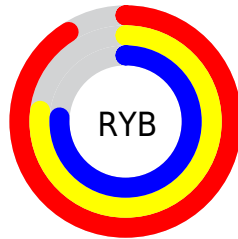
The Android color `4293379267` is a light color, and the websafe version is hex `FFCCCC`. A complement of this color would be `4291028711`, and the grayscale version is `4291743438`.

A 20% lighter version of the original color is `4294966780`, and `4289695373` is the 20% darker color. If you saturate the color by 10%, you get `4293373612`, and if you desaturate by 10%, it is `4293384922`.

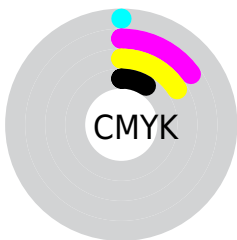
Distribution



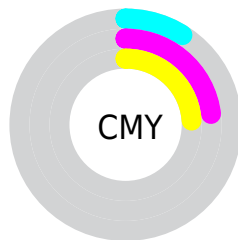
- Red (91%)
- Green (77%)
- Blue (76%)



- Red (91%)
- Yellow (77%)
- Blue (76%)



- Cyan (0%)
- Magenta (15%)
- Yellow (16%)
- Black (9%)



- Cyan (9%)
- Magenta (23%)
- Yellow (24%)

Brightness & Saturation Gradients

These gradients show how the Android color 4293379267 changes by changing the brightness by 10 percent. The first figure shows a shift by +10% for each color and the second figure -10%.

Similar to the brightness gradients but the following saturation gradients show a change of the Android color 4293379267 by changing the saturation by 10% instead.

 4293379267

 4293379267

4294967295

 4291537320

 4294966780

 4289695373

 4287919476

 4286209115

 4284564548

 4282920494

 4281407769

 4280156160

 4278190080

 4293379267

 4293379267

 4293373612

 4293384922

 4293367701

 4293390833

 4293362046

 4293394431

 4293356135

 4293350479

 4293344568

 4293338913

 4293333002

 4293330432

Harmonies

Analogous

The Analogous color harmony consists of three colors that are next to each other on the color wheel.



4293182672



4293379267



4293117625

Triad

The Triadic color harmony groups three colors that are evenly spaced from another and form a triangle on the color wheel.



4293379267



4290695613



4290498276

Complementary

The Complementary color scheme is a pair of colors which are on the opposite of each other on the color wheel.



4293379267



4291028711

Split Complementary

Split-complementary colors differ from the complementary color scheme. The scheme consists of three colors, the original color and two neighbors of the complement color.



4289778143



4293379267



4289909704

Square

The Square scheme is like the rectangle color scheme, but the four colors are evenly spaced on the color wheel.



4293379267



4291612341



4289582037



4291545827

Rectangle

The Rectangle color scheme consists of four colors that form a rectangle on the color wheel.



4293379267



4292725173



4289582037



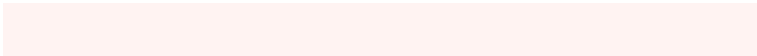
4290236387

Sweetspot

The Sweet Spot groups the original color and five complimentary colors.



4293379267



4294964210



4293379046



4286609528



4278190080



4286611584

Same Dimension

The Same Dimension uses a secret algorithm to generate beautiful new colors.



4293379267



4294955215



4293383875



4285753447



4289922304



4281532672

Inverse Universe

The Inverse Universe completely reimagines the original color for something new.



4291028711



4291821311



4291024103



4284969587



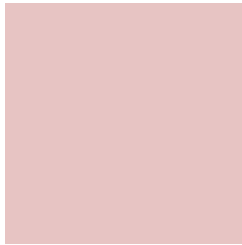
4278234803



4278202931

Previews

White Background



This preview shows how the Android color 4293379267 looks on a white background.

Color Contrast Check

Large Text (above 18pt) WCAG AA × Fail

Any Text WCAG AA × Fail

Large Text (above 18pt) WCAG AAA × Fail

Any Text WCAG AAA × Fail

Black Background



This preview shows how the Android color 4293379267 looks on a black background.

Color Contrast Check

Large Text (above 18pt) WCAG AA ✓ Pass

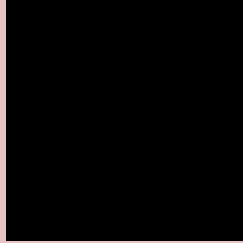
Any Text WCAG AA ✓ Pass

Large Text (above 18pt) WCAG AAA ✓ Pass

Any Text WCAG AAA ✓ Pass

If you want to check with other color combinations, try the [Color Contrast Checker](#).

Android 4293379267 Background



This preview shows how black text looks on a background with the Android color 4293379267.




This preview shows how white text looks on a background with the Android color 4293379267.

Color Blindness Simulation

Color vision deficiency is a very complex topic, and I could not describe the different causes any better than Wikipedia does, so if you want to learn more, you should check out their [article about color blindness](#).

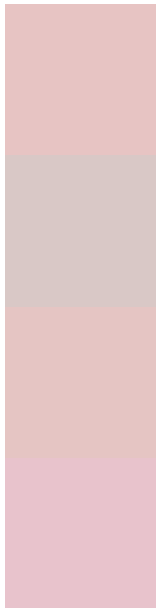
Dichromacy





Tritanopia
4293509841

Trichromacy



Original Color
4293379267

Protanomaly
4292462790

Deuteranomaly
4293248451

Tritanomaly
4293444556

Monochromacy



Original Color
4293379267

Achromatopsia
4291743438

Achromatomaly
4292332234

CSS Examples

Text

The CSS property to change the color of the text to Android 4293379267 is called "color". The color property can be set on classes, ids or directly on the HTML element.

This example shows how text in the color `rgb(231, 196, 195)` looks like.

```
.text, #text, p{  
    color:rgb(231, 196, 195)  
}
```

If you want to add a text shadow in that color use the text-shadow property, you can generate a text shadow directly with our [CSS Text Shadow Generator](#).

Here you see how black text with a 4 pixel rgb(231, 196, 195) colored shadow looks like.

```
.shadow{ text-shadow: 4px 4px 2px rgb(231, 196, 195) }
```

Border

The CSS property to change the border of an element to Android 4293379267 is called "border". The border property can be set on classes, ids or directly on the HTML element.

This example shows the color as border, it can be applied via the CSS property "border" or "border-color".

```
.border, #border, table{ border:4px solid rgb(231, 196, 195) }
```

If only the border color should be changed use the property `border-color`.

```
.border{ border-color:rgb(231, 196, 195) }
```

If you want to add a box shadow in that color use:

Here you see how a box with a 4 pixel `rgb(231, 196, 195)` colored shadow looks like.

```
.boxshadow{ -moz-box-shadow:4px 4px 4px 4px rgb(231, 196, 195); -webkit-box-shadow:4px 4px 4px 4px rgb(231, 196, 195); box-shadow:4px 4px 4px 4px rgb(231, 196, 195) }
```

Background

The CSS property to change the background color of an element to Android 4293379267 is called "background". The background property can be set on classes, ids or directly on the HTML element.

```
.background, #background, body{  
background: rgb(231, 196, 195) }
```

If only the background color should be changed can be used:

```
.background{ background-color: rgb(231,  
196, 195) }
```

This example shows the color as background, it is applied via the CSS property "background".

To optimize and compress your CSS code, you can use our [online CSS compressor and optimizer](#) based on csstidy. If you want to create a linear or radial gradient as background or border, check our [CSS Gradient Generator](#).

Hey! You found this booklet interesting? Support Converting Colors with the new Membership Option!

The pro membership hides all ads, plus gives you double the colors in the color bucket, and more awesome pro features!

[Learn more, Memberships starting at \\$2.50/m!](#)

**Follow me
on Twitter!**

@ConvertingColor