

Converting Colors

Android(4293379775)

Have a look what the booklet for
Android(4293379775) contains.

Android(4293379775)	3
<i>Conversions</i>	4
<i>Details</i>	6
<i>Harmonies</i>	11
<i>Previews</i>	23
<i>Color Blindness Simulation</i>	26
<i>CSS Examples</i>	29

Color

Android(4293379775)

Conversions

Conversions Part 1

Format	Color
Hex	E7C6BF
RGB	231, 198, 191
RGB Percent	91%, 78%, 75%
CMY	0.0941, 0.2235, 0.2510
CMYK	0.00, 0.14, 0.17, 0.09
HSL	11°, 45%, 83%
HSV	11°, 17%, 91%
XYZ	62.5531, 61.1387, 57.7943
YIQ	207.0690, 21.9150, 4.8190

Conversions

Conversions Part 2

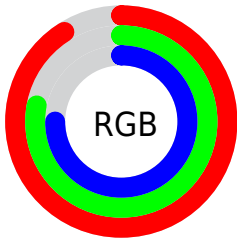
Format	Color
RYP	231, 199, 191
Decimal	15189695
CIELab	82.45, 10.55, 7.81
CIElCh	82, 13.128, 36.522
Yxy	61.1387, 0.3447, 0.3369
Android (android.graphics.Color)	4293379775 (0xFFE7C6BF)
YUV	207.0690, -7.9220, 20.9875
Hunter-Lab	78.1912, 5.9655, 10.9103

Details

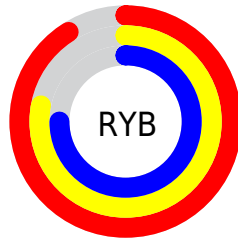
The Android color `4293379775` is a light color, and the websafe version is hex `FFCCCC`. A complement of this color would be `4290765031`, and the grayscale version is `4291809231`.

A 20% lighter version of the original color is `4294967287`, and `4289695882` is the 20% darker color. If you saturate the color by 10%, you get `4293374888`, and if you desaturate by 10%, it is `4293384662`.

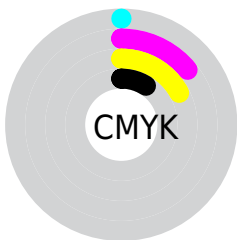
Distribution



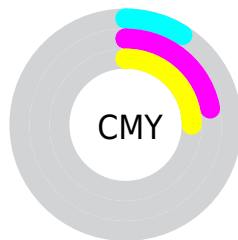
- Red (91%)
- Green (78%)
- Blue (75%)



- Red (91%)
- Yellow (78%)
- Blue (75%)



- Cyan (0%)
- Magenta (14%)
- Yellow (17%)
- Black (9%)



- Cyan (9%)
- Magenta (22%)
- Yellow (25%)

Brightness & Saturation Gradients

These gradients show how the Android color 4293379775 changes by changing the brightness by 10 percent. The first figure shows a shift by +10% for each color and the second figure -10%.

Similar to the brightness gradients but the following saturation gradients show a change of the Android color 4293379775 by changing the saturation by 10% instead.

 4293379775

 4293379775

4294967295

 4291537828

 4294967287

 4289695882

 4287919728

 4286209624

 4284565057

 4282921003

 4281408278

 4280090624

 4278190080

 4293379775

 4293379775

 4293374888

 4293384662

 4293370001

 4293389549

 4293365114

 4293394431

 4293360227

 4293355340

 4293350452

 4293345565

 4293340678

 4293339136

Harmonies

Analogous

The Analogous color harmony consists of three colors that are next to each other on the color wheel.



4293379531



4293379775



4292921783

Triad

The Triadic color harmony groups three colors that are evenly spaced from another and form a triangle on the color wheel.



4293379775



4290368707



4291022309

Complementary

The Complementary color scheme is a pair of colors which are on the opposite of each other on the color wheel.



4293379775



4290765031

Split Complementary

Split-complementary colors differ from the complementary color scheme. The scheme consists of three colors, the original color and two neighbors of the complement color.



4290171363



4293379775



4289779151

Square

The Square scheme is like the rectangle color scheme, but the four colors are evenly spaced on the color wheel.



4293379775



4291219897



4289713371



4292069857

Rectangle

The Rectangle color scheme consists of four colors that form a rectangle on the color wheel.



4293379775



4292463797



4289713371



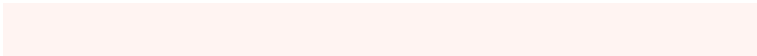
4290695141

Sweetspot

The Sweet Spot groups the original color and five complimentary colors.



4293379775



4294964466



4293378016



4286609784



4278190080



4286611584

Same Dimension

The Same Dimension uses a secret algorithm to generate beautiful new colors.



4293379775



4294955977



4293384895



4285753703



4289928960



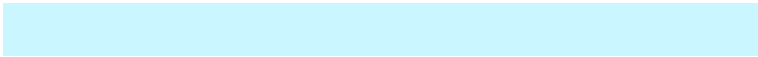
4281534720

Inverse Universe

The Inverse Universe completely reimagines the original color for something new.



4290765031



4291426047



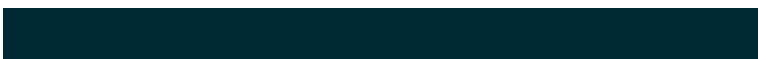
4290759911



4284969331



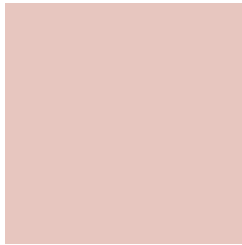
4278227891



4278200883

Previews

White Background



This preview shows how the Android color 4293379775 looks on a white background.

Color Contrast Check

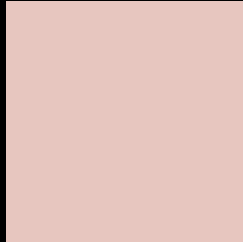
Large Text (above 18pt) WCAG AA × Fail

Any Text WCAG AA × Fail

Large Text (above 18pt) WCAG AAA × Fail

Any Text WCAG AAA × Fail

Black Background



This preview shows how the Android color 4293379775 looks on a black background.

Color Contrast Check

Large Text (above 18pt) WCAG AA ✓ Pass

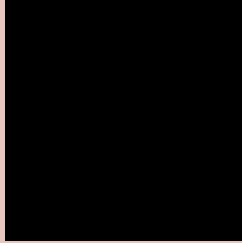
Any Text WCAG AA ✓ Pass

Large Text (above 18pt) WCAG AAA ✓ Pass

Any Text WCAG AAA ✓ Pass

If you want to check with other color combinations, try the [Color Contrast Checker](#).

Android 4293379775 Background



This preview shows how black text looks on a background with the Android color 4293379775.



This preview shows how white text looks on a background with the Android color 4293379775.

Color Blindness Simulation

Color vision deficiency is a very complex topic, and I could not describe the different causes any better than Wikipedia does, so if you want to learn more, you should check out their [article about color blindness](#).

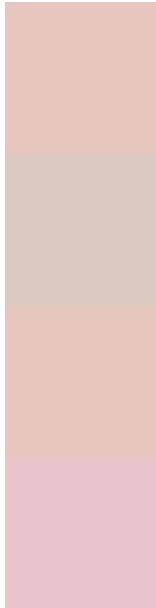
Dichromacy

	Original Color 4293379775
	Protanopia 4292136387
	Deuteranopia 4293314239



Tritanopia
4293510098

Trichromacy



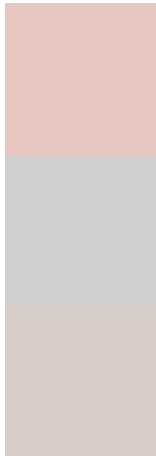
Original Color
4293379775

Protanomaly
4292594370

Deuteranomaly
4293314239

Tritanomaly
4293444811

Monochromacy



Original Color
4293379775

Achromatopsia
4291809231

Achromatomaly
4292398281

CSS Examples

Text

The CSS property to change the color of the text to Android 4293379775 is called "color". The color property can be set on classes, ids or directly on the HTML element.

This example shows how text in the color `rgb(231, 198, 191)` looks like.

```
.text, #text, p{  
    color:rgb(231, 198, 191)  
}
```

If you want to add a text shadow in that color use the text-shadow property, you can generate a text shadow directly with our [CSS Text Shadow Generator](#).

Here you see how black text with a 4 pixel rgb(231, 198, 191) colored shadow looks like.

```
.shadow{ text-shadow: 4px 4px 2px rgb(231, 198, 191) }
```

Border

The CSS property to change the border of an element to Android 4293379775 is called "border". The border property can be set on classes, ids or directly on the HTML element.

This example shows the color as border, it can be applied via the CSS property "border" or "border-color".

```
.border, #border, table{ border:4px solid rgb(231, 198, 191) }
```

If only the border color should be changed use the property `border-color`.

```
.border{ border-color:rgb(231, 198, 191) }
```

If you want to add a box shadow in that color use:

Here you see how a box with a 4 pixel `rgb(231, 198, 191)` colored shadow looks like.

```
.boxshadow{ -moz-box-shadow:4px 4px 4px  
4px rgb(231, 198, 191); -webkit-box-  
shadow:4px 4px 4px 4px rgb(231, 198, 191);  
box-shadow:4px 4px 4px 4px rgb(231, 198,  
191) }
```

Background

The CSS property to change the background color of an element to Android 4293379775 is called "background". The background property can be set on classes, ids or directly on the HTML element.

```
.background, #background, body{  
background: rgb(231, 198, 191) }
```

If only the background color should be changed can be used:

```
.background{ background-color: rgb(231,  
198, 191) }
```

This example shows the color as background, it is applied via the CSS property "background".

To optimize and compress your CSS code, you can use our [online CSS compressor and optimizer](#) based on csstidy. If you want to create a linear or radial gradient as background or border, check our [CSS Gradient Generator](#).

Hey! You found this booklet interesting? Support Converting Colors with the new Membership Option!

The pro membership hides all ads, plus gives you double the colors in the color bucket, and more awesome pro features!

[Learn more, Memberships starting at \\$2.50/m!](#)

**Follow me
on Twitter!**

@ConvertingColor