

Converting Colors

Android(4293380297)

Have a look what the booklet for
Android(4293380297) contains.

Android(4293380297)	3
<i>Conversions</i>	4
<i>Details</i>	6
<i>Harmonies</i>	11
<i>Previews</i>	23
<i>Color Blindness Simulation</i>	26
<i>CSS Examples</i>	29

Color

Android(4293380297)

Conversions

Conversions Part 1

Format	Color
Hex	E7C8C9
RGB	231, 200, 201
RGB Percent	91%, 78%, 79%
CMY	0.0941, 0.2157, 0.2118
CMYK	0.00, 0.13, 0.13, 0.09
HSL	358°, 39%, 85%
HSV	358°, 13%, 91%
XYZ	64.1519, 62.5145, 63.9437
YIQ	209.3830, 18.1550, 6.8830

Conversions

Conversions Part 2

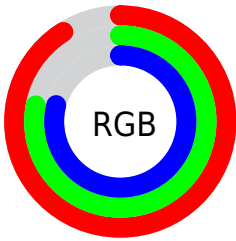
Format	Color
R _Y B	231, 200, 201
Decimal	15190217
CIE Lab	83.19, 11.06, 3.53
CIE LCh	83, 11.613, 17.675
Yxy	62.5145, 0.3366, 0.3280
Android (android.graphics.Color)	4293380297 (0xFFE7C8C9)
YUV	209.3830, -4.1328, 18.9581
Hunter-Lab	79.0661, 6.4638, 7.3963

Details

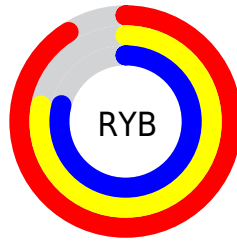
The Android color `4293380297` is a light color, and the websafe version is hex `FFCCCC`. A complement of this color would be `4291356646`, and the grayscale version is `4291940817`.

A 20% lighter version of the original color is `4294967295`, and `4289696403` is the 20% darker color. If you saturate the color by 10%, you get `4293374387`, and if you desaturate by 10%, it is `4293386207`.

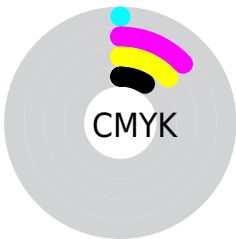
Distribution



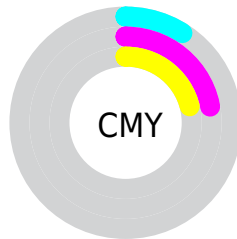
- Red (91%)
- Green (78%)
- Blue (79%)



- Red (91%)
- Yellow (78%)
- Blue (79%)



- Cyan (0%)
- Magenta (13%)
- Yellow (13%)
- Black (9%)



- Cyan (9%)
- Magenta (22%)
- Yellow (21%)

Brightness & Saturation Gradients

These gradients show how the Android color 4293380297 changes by changing the brightness by 10 percent. The first figure shows a shift by +10% for each color and the second figure -10%.

Similar to the brightness gradients but the following saturation gradients show a change of the Android color 4293380297 by changing the saturation by 10% instead.

 4293380297

 4293380297

4294967295

 4291538350

 4289696403

 4287920249

 4286209889

 4284565577

 4282986802

 4281474077

 4280222468

 4278190080

 4293380297

 4293380297

 4293374387

 4293386207

 4293368476

 4293392118

 4293362566

 4293394431

 4293356656

 4293350745

 4293344579

 4293338669

 4293332758

 4293328903

Harmonies

Analogous

The Analogous color harmony consists of three colors that are next to each other on the color wheel.



4293118164



4293380297



4293249727

Triad

The Triadic color harmony groups three colors that are evenly spaced from another and form a triangle on the color wheel.



4293380297



4291155136



4290761444

Complementary

The Complementary color scheme is a pair of colors which are on the opposite of each other on the color wheel.



4293380297



4291356646

Split Complementary

Split-complementary colors differ from the complementary color scheme. The scheme consists of three colors, the original color and two neighbors of the complement color.



4290172127



4293380297



4290434506

Square

The Square scheme is like the rectangle color scheme, but the four colors are evenly spaced on the color wheel.



4293380297



4291940794



4290041557



4291612388

Rectangle

The Rectangle color scheme consists of four colors that form a rectangle on the color wheel.



4293380297



4292922555



4290041557



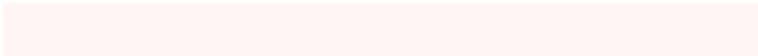
4290499555

Sweetspot

The Sweet Spot groups the original color and five complimentary colors.



4293380297



4294964725



4293314791



4286609785



4278190080



4286611584

Same Dimension

The Same Dimension uses a secret algorithm to generate beautiful new colors.



4293380297



4294956760



4293383880



4285753192



4289921030



4281532418

Inverse Universe

The Inverse Universe completely reimagines the original color for something new.



4293380297



4294956760



4291353063



4285753192



4289921030



4281532418

Previews

White Background



This preview shows how the Android color 4293380297 looks on a white background.

Color Contrast Check

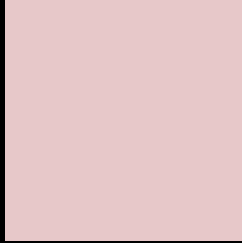
Large Text (above 18pt) WCAG AA × Fail

Any Text WCAG AA × Fail

Large Text (above 18pt) WCAG AAA × Fail

Any Text WCAG AAA × Fail

Black Background



This preview shows how the Android color 4293380297 looks on a black background.

Color Contrast Check

Large Text (above 18pt) WCAG AA ✓ Pass

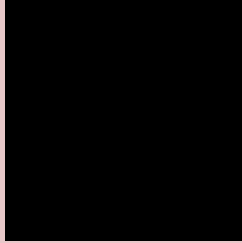
Any Text WCAG AA ✓ Pass

Large Text (above 18pt) WCAG AAA ✓ Pass

Any Text WCAG AAA ✓ Pass

If you want to check with other color combinations, try the [Color Contrast Checker](#).

Android 4293380297 Background



This preview shows how black text looks on a background with the Android color 4293380297.



This preview shows how white text looks on a background with the Android color 4293380297.

Color Blindness Simulation

Color vision deficiency is a very complex topic, and I could not describe the different causes any better than Wikipedia does, so if you want to learn more, you should check out their [article about color blindness](#).


Dichromacy



Original Color
4293380297

Protanopia
4292136653

Deuteranopia
4293314761



Tritanopia
4293510870

Trichromacy



Original Color
4293380297

Protanomaly
4292594892

Deuteranomaly
4293314761

Tritanomaly
4293445585

Monochromacy



Original Color
4293380297

Achromatopsia
4291940817

Achromatomaly
4292464334

CSS Examples

Text

The CSS property to change the color of the text to Android 4293380297 is called "color". The color property can be set on classes, ids or directly on the HTML element.

This example shows how text in the color `rgb(231, 200, 201)` looks like.

```
.text, #text, p{  
    color:rgb(231, 200, 201)  
}
```

If you want to add a text shadow in that color use the text-shadow property, you can generate a text shadow directly with our [CSS Text Shadow Generator](#).

Here you see how black text with a 4 pixel rgb(231, 200, 201) colored shadow looks like.

```
.shadow{ text-shadow: 4px 4px 2px rgb(231, 200, 201) }
```

Border

The CSS property to change the border of an element to Android 4293380297 is called "border". The border property can be set on classes, ids or directly on the HTML element.

This example shows the color as border, it can be applied via the CSS property "border" or "border-color".

```
.border, #border, table{ border:4px solid rgb(231, 200, 201) }
```

If only the border color should be changed use the property `border-color`.

```
.border{ border-color:rgb(231, 200, 201) }
```

If you want to add a box shadow in that color use:

Here you see how a box with a 4 pixel `rgb(231, 200, 201)` colored shadow looks like.

```
.boxshadow{ -moz-box-shadow:4px 4px 4px  
4px rgb(231, 200, 201); -webkit-box-  
shadow:4px 4px 4px 4px rgb(231, 200, 201);  
box-shadow:4px 4px 4px 4px rgb(231, 200,  
201) }
```

Background

The CSS property to change the background color of an element to Android 4293380297 is called "background". The background property can be set on classes, ids or directly on the HTML element.

```
.background, #background, body{  
background: rgb(231, 200, 201) }
```

If only the background color should be changed can be used:

```
.background{ background-color: rgb(231,  
200, 201) }
```

This example shows the color as background, it is applied via the CSS property "background".

To optimize and compress your CSS code, you can use our [online CSS compressor and optimizer](#) based on csstidy. If you want to create a linear or radial gradient as background or border, check our [CSS Gradient Generator](#).

Hey! You found this booklet interesting? Support Converting Colors with the new Membership Option!

The pro membership hides all ads, plus gives you double the colors in the color bucket, and more awesome pro features!

[Learn more, Memberships starting at \\$2.50/m!](#)

**Follow me
on Twitter!**

@ConvertingColor