

Converting Colors

Android(4293380815)

Have a look what the booklet for
Android(4293380815) contains.

Android(4293380815)	3
<i>Conversions</i>	4
<i>Details</i>	6
<i>Harmonies</i>	11
<i>Previews</i>	23
<i>Color Blindness Simulation</i>	26
<i>CSS Examples</i>	29

Color

Android(4293380815)

Conversions

Conversions Part 1

Format	Color
Hex	E7CACF
RGB	231, 202, 207
RGB Percent	91%, 79%, 81%
CMY	0.0941, 0.2078, 0.1882
CMYK	0.00, 0.13, 0.10, 0.09
HSL	350°, 38%, 85%
HSV	350°, 13%, 91%
XYZ	65.3380, 63.7350, 67.8899
YIQ	211.2410, 15.6790, 7.7030

Conversions

Conversions Part 2

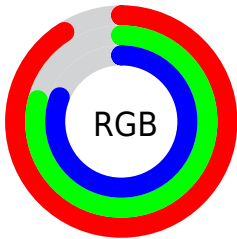
Format	Color
R _Y B	231, 202, 207
Decimal	15190735
CIE Lab	83.83, 10.99, 1.25
CIE LCh	84, 11.058, 6.515
Yxy	63.7350, 0.3317, 0.3236
Android (android.graphics.Color)	4293380815 (0xFFE7CACF)
YUV	211.2410, -2.0908, 17.3286
Hunter-Lab	79.8342, 6.3784, 5.4645

Details

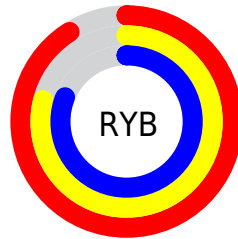
The Android color `4293380815` is a light color, and the websafe version is hex `FFCCCC`. A complement of this color would be `4291487714`, and the grayscale version is `4292072403`.

A 20% lighter version of the original color is `4294967295`, and `4289696921` is the 20% darker color. If you saturate the color by 10%, you get `4293374908`, and if you desaturate by 10%, it is `4293386722`.

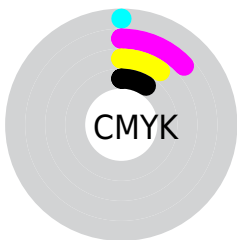
Distribution



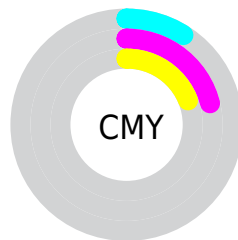
- Red (91%)
- Green (79%)
- Blue (81%)



- Red (91%)
- Yellow (79%)
- Blue (81%)



- Cyan (0%)
- Magenta (13%)
- Yellow (10%)
- Black (9%)



- Cyan (9%)
- Magenta (21%)
- Yellow (19%)

Brightness & Saturation Gradients


These gradients show how the Android color 4293380815 changes by changing the brightness by 10 percent. The first figure shows a shift by +10% for each color and the second figure -10%.

Similar to the brightness gradients but the following saturation gradients show a change of the Android color 4293380815 by changing the saturation by 10% instead.

 4293380815

 4293380815

4294967295

 4291538867

 4289696921

 4287920767

 4286210406

 4284565838

 4282987319

 4281474338

 4280222987

 4278190080

 4293380815

 4293380815

 4293374908

 4293386722

 4293369001

 4293392629

 4293363094

 4293394431

 4293357187

 4293351023

 4293345116

 4293339209

 4293333302

 4293328936

Harmonies

Analogous

The Analogous color harmony consists of three colors that are next to each other on the color wheel.



4292987866



4293380815



4293381061

Triad

The Triadic color harmony groups three colors that are evenly spaced from another and form a triangle on the color wheel.



4293380815



4291548352



4290696420

Complementary

The Complementary color scheme is a pair of colors which are on the opposite of each other on the color wheel.



4293380815



4291487714

Split Complementary

Split-complementary colors differ from the complementary color scheme. The scheme consists of three colors, the original color and two neighbors of the complement color.



4290303965



4293380815



4290827976

Square

The Square scheme is like the rectangle color scheme, but the four colors are evenly spaced on the color wheel.



4293380815



4292334012



4290369491



4291416549

Rectangle

The Rectangle color scheme consists of four colors that form a rectangle on the color wheel.



4293380815



4293184960



4290369491



4290500066

Sweetspot

The Sweet Spot groups the original color and five complimentary colors.



4293380815



4294964727



4293053159



4286609786



4278190080



4286611584

Same Dimension

The Same Dimension uses a secret algorithm to generate beautiful new colors.



4293380815



4294957535



4293383114



4285753193



4289921055



4281532425

Inverse Universe

The Inverse Universe completely reimagines the original color for something new.



4293380815



4294957535



4291485415



4285753193



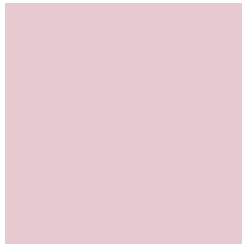
4289921055



4281532425

Previews

White Background



This preview shows how the Android color 4293380815 looks on a white background.

Color Contrast Check

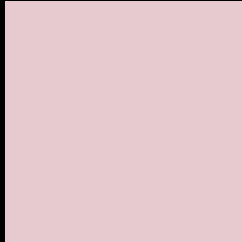
Large Text (above 18pt) WCAG AA × Fail

Any Text WCAG AA × Fail

Large Text (above 18pt) WCAG AAA × Fail

Any Text WCAG AAA × Fail

Black Background



This preview shows how the Android color 4293380815 looks on a black background.

Color Contrast Check

Large Text (above 18pt) WCAG AA ✓ Pass

Any Text WCAG AA ✓ Pass

Large Text (above 18pt) WCAG AAA ✓ Pass

Any Text WCAG AAA ✓ Pass

If you want to check with other color combinations, try the [Color Contrast Checker](#).

Android 4293380815 Background



This preview shows how black text looks on a background with the Android color 4293380815.




This preview shows how white text looks on a background with the Android color 4293380815.

Color Blindness Simulation

Color vision deficiency is a very complex topic, and I could not describe the different causes any better than Wikipedia does, so if you want to learn more, you should check out their [article about color blindness](#).

Dichromacy

	Original Color 4293380815
	Protanopia 4292137170
	Deuteranopia 4293315279



Tritanopia
4293446104

Trichromacy



Original Color
4293380815

Protanomaly
4292595409

Deuteranomaly
4293315279

Tritanomaly
4293446101

Monochromacy



Original Color
4293380815

Achromatopsia
4292072403

Achromatomaly
4292530386

CSS Examples

Text

The CSS property to change the color of the text to Android 4293380815 is called "color". The color property can be set on classes, ids or directly on the HTML element.

This example shows how text in the color `rgb(231, 202, 207)` looks like.

```
.text, #text, p{  
    color:rgb(231, 202, 207)  
}
```

If you want to add a text shadow in that color use the text-shadow property, you can generate a text shadow directly with our [CSS Text Shadow Generator](#).

Here you see how black text with a 4 pixel rgb(231, 202, 207) colored shadow looks like.

```
.shadow{ text-shadow: 4px 4px 2px rgb(231, 202, 207) }
```

Border

The CSS property to change the border of an element to Android 4293380815 is called "border". The border property can be set on classes, ids or directly on the HTML element.

This example shows the color as border, it can be applied via the CSS property "border" or "border-color".

```
.border, #border, table{ border:4px solid rgb(231, 202, 207) }
```

If only the border color should be changed use the property border-color.

```
.border{ border-color:rgb(231, 202, 207) }
```

If you want to add a box shadow in that color use:

Here you see how a box with a 4 pixel rgb(231, 202, 207) colored shadow looks like.

```
.boxshadow{ -moz-box-shadow:4px 4px 4px  
4px rgb(231, 202, 207); -webkit-box-  
shadow:4px 4px 4px 4px rgb(231, 202, 207);  
box-shadow:4px 4px 4px 4px rgb(231, 202,  
207) }
```

Background

The CSS property to change the background color of an element to Android 4293380815 is called "background". The background property can be set on classes, ids or directly on the HTML element.

```
.background, #background, body{  
background: rgb(231, 202, 207) }
```

If only the background color should be changed can be used:

```
.background{ background-color: rgb(231,  
202, 207) }
```

This example shows the color as background, it is applied via the CSS property "background".

To optimize and compress your CSS code, you can use our [online CSS compressor and optimizer](#) based on csstidy. If you want to create a linear or radial gradient as background or border, check our [CSS Gradient Generator](#).

Hey! You found this booklet interesting? Support Converting Colors with the new Membership Option!

The pro membership hides all ads, plus gives you double the colors in the color bucket, and more awesome pro features!

[Learn more, Memberships starting at \\$2.50/m!](#)

**Follow me
on Twitter!**

@ConvertingColor