

Converting Colors

Android(4293381566)

Have a look what the booklet for
Android(4293381566) contains.

Android(4293381566)	3
<i>Conversions</i>	4
<i>Details</i>	6
<i>Harmonies</i>	11
<i>Previews</i>	23
<i>Color Blindness Simulation</i>	26
<i>CSS Examples</i>	29

Color

Android(4293381566)

Conversions

Conversions Part 1

Format	Color
Hex	E7CDBE
RGB	231, 205, 190
RGB Percent	91%, 80%, 75%
CMY	0.0941, 0.1961, 0.2549
CMYK	0.00, 0.11, 0.18, 0.09
HSL	22°, 46%, 83%
HSV	22°, 18%, 91%
XYZ	64.0806, 64.3693, 57.7623
YIQ	211.0640, 20.3110, 0.8470

Conversions

Conversions Part 2

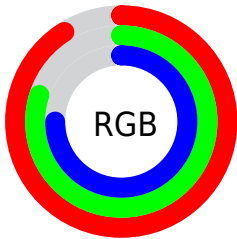
Format	Color
R _Y B	231, 214, 190
Decimal	15191486
CIE Lab	84.16, 6.72, 10.78
CIE LCh	84, 12.702, 58.084
Yxy	64.3693, 0.3441, 0.3457
Android (android.graphics.Color)	4293381566 (0xFFE7CDBE)
YUV	211.0640, -10.3846, 17.4839
Hunter-Lab	80.2305, 2.1658, 13.4752

Details

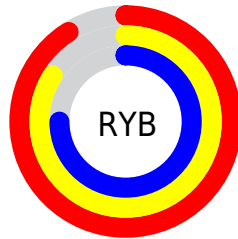
The Android color `4293381566` is a light color, and the websafe version is hex `FFCCCC`. A complement of this color would be `4290697447`, and the grayscale version is `4292072403`.

A 20% lighter version of the original color is `4294967286`, and `4289697673` is the 20% darker color. If you saturate the color by 10%, you get `4293377703`, and if you desaturate by 10%, it is `4293385429`.

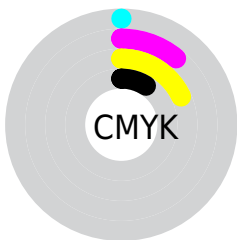
Distribution



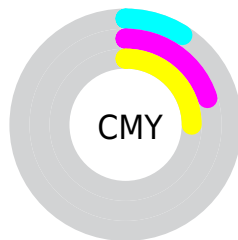
- Red (91%)
- Green (80%)
- Blue (75%)



- Red (91%)
- Yellow (84%)
- Blue (75%)



- Cyan (0%)
- Magenta (11%)
- Yellow (18%)
- Black (9%)



- Cyan (9%)
- Magenta (20%)
- Yellow (25%)

Brightness & Saturation Gradients


These gradients show how the Android color 4293381566 changes by changing the brightness by 10 percent. The first figure shows a shift by +10% for each color and the second figure -10%.

Similar to the brightness gradients but the following saturation gradients show a change of the Android color 4293381566 by changing the saturation by 10% instead.

 4293381566

 4293381566

4294967295

 4291539619

 4294967286

 4289697673

 4287921519

 4286211159

 4284566592

 4282987818

 4281409557

 4280092928

 4278190080

 4293381566

 4293381566

 4293377703

 4293385429

 4293374096

 4293389036

 4293370233

 4293392895

 4293366370

 4293394431

 4293362763

 4293358899

 4293355036

 4293351429

 4293350656

Harmonies

Analogous

The Analogous color harmony consists of three colors that are next to each other on the color wheel.



4293708487



4293381566



4292727226

Triad

The Triadic color harmony groups three colors that are evenly spaced from another and form a triangle on the color wheel.



4293381566



4290304465



4292071399

Complementary

The Complementary color scheme is a pair of colors which are on the opposite of each other on the color wheel.



4293381566



4290697447

Split Complementary

Split-complementary colors differ from the complementary color scheme. The scheme consists of three colors, the original color and two neighbors of the complement color.



4291089386



4293381566



4290042333

Square

The Square scheme is like the rectangle color scheme, but the four colors are evenly spaced on the color wheel.



4293381566



4290959557



4290369510



4292988127

Rectangle

The Rectangle color scheme consists of four colors that form a rectangle on the color wheel.



4293381566



4292137915



4290369510



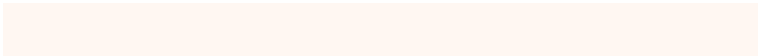
4291743977

Sweetspot

The Sweet Spot groups the original color and five complimentary colors.



4293381566



4294965234



4293377753



4286610296



4278190080



4286611584

Same Dimension

The Same Dimension uses a secret algorithm to generate beautiful new colors.



4293381566



4294958537



4293386686



4285754215



4289937664



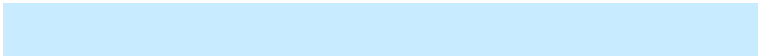
4281537280

Inverse Universe

The Inverse Universe completely reimagines the original color for something new.



4290697447



4291423231



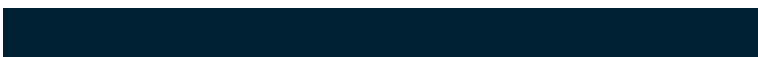
4290692327



4284968819



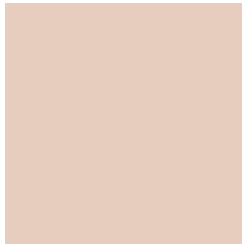
4278219187



4278198323

Previews

White Background



This preview shows how the Android color 4293381566 looks on a white background.

Color Contrast Check

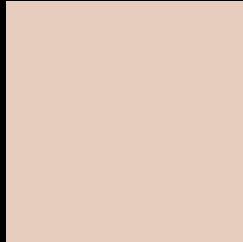
Large Text (above 18pt) WCAG AA × Fail

Any Text WCAG AA × Fail

Large Text (above 18pt) WCAG AAA × Fail

Any Text WCAG AAA × Fail

Black Background



This preview shows how the Android color 4293381566 looks on a black background.

Color Contrast Check

Large Text (above 18pt) WCAG AA ✓ Pass

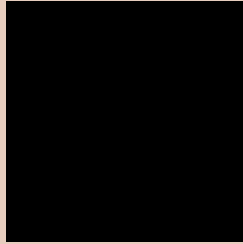
Any Text WCAG AA ✓ Pass

Large Text (above 18pt) WCAG AAA ✓ Pass

Any Text WCAG AAA ✓ Pass

If you want to check with other color combinations, try the [Color Contrast Checker](#).

Android 4293381566 Background



This preview shows how black text looks on a background with the Android color 4293381566.



This preview shows how white text looks on a background with the Android color 4293381566.

Color Blindness Simulation

Color vision deficiency is a very complex topic, and I could not describe the different causes any better than Wikipedia does, so if you want to learn more, you should check out their [article about color blindness](#).

Dichromacy



Original Color
4293381566

Protanopia
4292530624

Deuteranopia
4293839806



Tritanopia
4293577177

Trichromacy



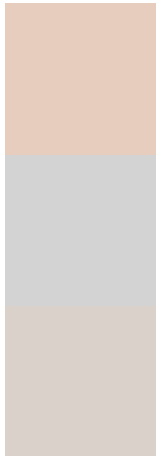
Original Color
4293381566

Protanomaly
4292858047

Deuteranomaly
4293643454

Tritanomaly
4293511887

Monochromacy



Original Color
4293381566

Achromatopsia
4292072403

Achromatomaly
4292530635

CSS Examples

Text

The CSS property to change the color of the text to Android 4293381566 is called "color". The color property can be set on classes, ids or directly on the HTML element.

This example shows how text in the color `rgb(231, 205, 190)` looks like.

```
.text, #text, p{  
    color:rgb(231, 205, 190)  
}
```

If you want to add a text shadow in that color use the text-shadow property, you can generate a text shadow directly with our [CSS Text Shadow Generator](#).

Here you see how black text with a 4 pixel rgb(231, 205, 190) colored shadow looks like.

```
.shadow{ text-shadow: 4px 4px 2px rgb(231, 205, 190) }
```

Border

The CSS property to change the border of an element to Android 4293381566 is called "border". The border property can be set on classes, ids or directly on the HTML element.

This example shows the color as border, it can be applied via the CSS property "border" or "border-color".

```
.border, #border, table{ border:4px solid rgb(231, 205, 190) }
```

If only the border color should be changed use the property `border-color`.

```
.border{ border-color:rgb(231, 205, 190) }
```

If you want to add a box shadow in that color use:

Here you see how a box with a 4 pixel `rgb(231, 205, 190)` colored shadow looks like.

```
.boxshadow{ -moz-box-shadow:4px 4px 4px  
4px rgb(231, 205, 190); -webkit-box-  
shadow:4px 4px 4px 4px rgb(231, 205, 190);  
box-shadow:4px 4px 4px 4px rgb(231, 205,  
190) }
```

Background

The CSS property to change the background color of an element to Android 4293381566 is called "background". The background property can be set on classes, ids or directly on the HTML element.

```
.background, #background, body{  
background: rgb(231, 205, 190) }
```

If only the background color should be changed can be used:

```
.background{ background-color: rgb(231,  
205, 190) }
```

This example shows the color as background, it is applied via the CSS property "background".

To optimize and compress your CSS code, you can use our [online CSS compressor and optimizer](#) based on csstidy. If you want to create a linear or radial gradient as background or border, check our [CSS Gradient Generator](#).

Hey! You found this booklet interesting? Support Converting Colors with the new Membership Option!

The pro membership hides all ads, plus gives you double the colors in the color bucket, and more awesome pro features!

[Learn more, Memberships starting at \\$2.50/m!](#)

**Follow me
on Twitter!**

@ConvertingColor