

Converting Colors

Android(4293381578)

Have a look what the booklet for
Android(4293381578) contains.

Android(4293381578)	3
<i>Conversions</i>	4
<i>Details</i>	6
<i>Harmonies</i>	11
<i>Previews</i>	23
<i>Color Blindness Simulation</i>	26
<i>CSS Examples</i>	29

Color

Android(4293381578)

Conversions

Conversions Part 1

Format	Color
Hex	E7CDCA
RGB	231, 205, 202
RGB Percent	91%, 80%, 79%
CMY	0.0941, 0.1961, 0.2078
CMYK	0.00, 0.11, 0.13, 0.09
HSL	6°, 38%, 85%
HSV	6°, 13%, 91%
XYZ	65.4470, 64.9158, 64.9577
YIQ	212.4320, 16.4590, 4.5790

Conversions

Conversions Part 2

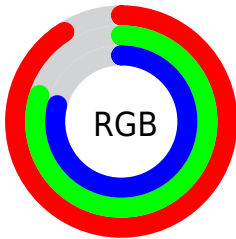
Format	Color
R_{YB}	231, 205, 202
Decimal	15191498
CIE _{Lab}	84.44, 8.59, 4.81
CIE _{LCh}	84, 9.845, 29.231
Yxy	64.9158, 0.3351, 0.3324
Android (android.graphics.Color)	4293381578 (0xFFE7CDCA)
YUV	212.4320, -5.1430, 16.2841
Hunter-Lab	80.5704, 3.9967, 8.5983

Details

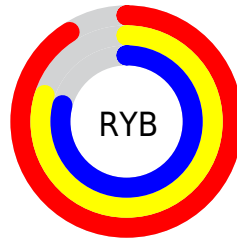
The Android color `4293381578` is a light color, and the websafe version is hex `FFCCCC`. A complement of this color would be `4291486951`, and the grayscale version is `4292138196`.

A 20% lighter version of the original color is `4294967295`, and `4289697684` is the 20% darker color. If you saturate the color by 10%, you get `4293376179`, and if you desaturate by 10%, it is `4293386977`.

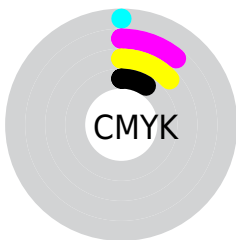
Distribution



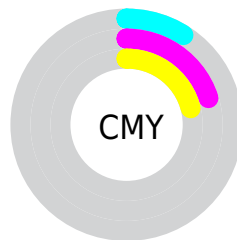
- Red (91%)
- Green (80%)
- Blue (79%)



- Red (91%)
- Yellow (80%)
- Blue (79%)



- Cyan (0%)
- Magenta (11%)
- Yellow (13%)
- Black (9%)



- Cyan (9%)
- Magenta (20%)
- Yellow (21%)

Brightness & Saturation Gradients

These gradients show how the Android color 4293381578 changes by changing the brightness by 10 percent. The first figure shows a shift by +10% for each color and the second figure -10%.

Similar to the brightness gradients but the following saturation gradients show a change of the Android color 4293381578 by changing the saturation by 10% instead.

 4293381578

 4293381578

4294967295

 4291539631

 4289697684

 4287921530

 4286211169

 4284566602

 4282987827

 4281475102

 4280224005

 4278190080

 4293381578

 4293381578

 4293376179

 4293386977

 4293371036

 4293392120

 4293365637

 4293394431

 4293360238

 4293354838

 4293349695

 4293344296

 4293338897

 4293335040

Harmonies

Analogous

The Analogous color harmony consists of three colors that are next to each other on the color wheel.



4293316051



4293381578



4293119939

Triad

The Triadic color harmony groups three colors that are evenly spaced from another and form a triangle on the color wheel.



4293381578



4291221449



4291417317

Complementary

The Complementary color scheme is a pair of colors which are on the opposite of each other on the color wheel.



4293381578



4291486951

Split Complementary

Split-complementary colors differ from the complementary color scheme. The scheme consists of three colors, the original color and two neighbors of the complement color.



4290828002



4293381578



4290697426

Square

The Square scheme is like the rectangle color scheme, but the four colors are evenly spaced on the color wheel.



4293381578



4291876290



4290566363



4292137187

Rectangle

The Rectangle color scheme consists of four colors that form a rectangle on the color wheel.



4293381578



4292792769



4290566363



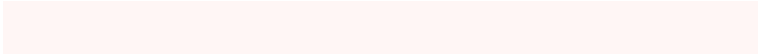
4291155429

Sweetspot

The Sweet Spot groups the original color and five complimentary colors.



4293381578



4294964981



4293380836



4286610041



4278190080



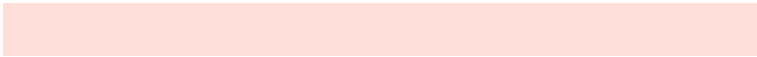
4286611584

Same Dimension

The Same Dimension uses a secret algorithm to generate beautiful new colors.



4293381578



4294958553



4293385162



4285753447



4289925632



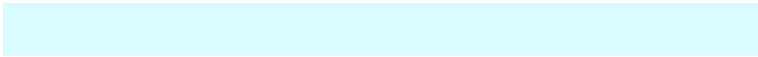
4281533696

Inverse Universe

The Inverse Universe completely reimagines the original color for something new.



4291486951



4292475903



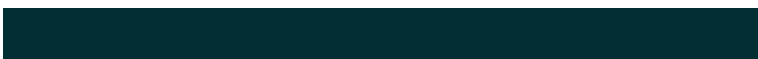
4291483367



4284969587



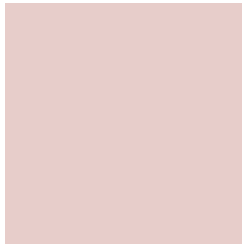
4278231219



4278201907

Previews

White Background



This preview shows how the Android color 4293381578 looks on a white background.

Color Contrast Check

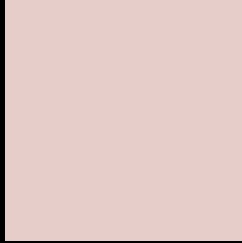
Large Text (above 18pt) WCAG AA × Fail

Any Text WCAG AA × Fail

Large Text (above 18pt) WCAG AAA × Fail

Any Text WCAG AAA × Fail

Black Background



This preview shows how the Android color 4293381578 looks on a black background.

Color Contrast Check

Large Text (above 18pt) WCAG AA ✓ Pass

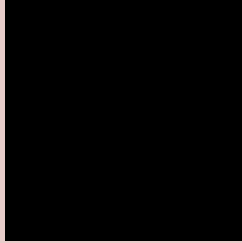
Any Text WCAG AA ✓ Pass

Large Text (above 18pt) WCAG AAA ✓ Pass

Any Text WCAG AAA ✓ Pass

If you want to check with other color combinations, try the [Color Contrast Checker](#).

Android 4293381578 Background



This preview shows how black text looks on a background with the Android color 4293381578.



This preview shows how white text looks on a background with the Android color 4293381578.

Color Blindness Simulation

Color vision deficiency is a very complex topic, and I could not describe the different causes any better than Wikipedia does, so if you want to learn more, you should check out their [article about color blindness](#).

Dichromacy

	Original Color 4293381578
	Protanopia 4292399821
	Deuteranopia 4293577930



Tritanopia
4293511898

Trichromacy



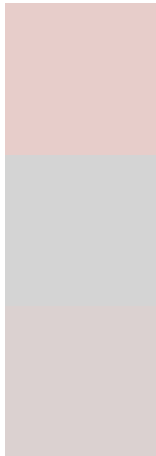
Original Color
4293381578

Protanomaly
4292726988

Deuteranomaly
4293512394

Tritanomaly
4293446612

Monochromacy



Original Color
4293381578

Achromatopsia
4292138196

Achromatomaly
4292596176

CSS Examples

Text

The CSS property to change the color of the text to Android 4293381578 is called "color". The color property can be set on classes, ids or directly on the HTML element.

This example shows how text in the color `rgb(231, 205, 202)` looks like.

```
.text, #text, p{  
    color:rgb(231, 205, 202)  
}
```

If you want to add a text shadow in that color use the text-shadow property, you can generate a text shadow directly with our [CSS Text Shadow Generator](#).

Here you see how black text with a 4 pixel rgb(231, 205, 202) colored shadow looks like.

```
.shadow{ text-shadow: 4px 4px 2px rgb(231, 205, 202) }
```

Border

The CSS property to change the border of an element to Android 4293381578 is called "border". The border property can be set on classes, ids or directly on the HTML element.

This example shows the color as border, it can be applied via the CSS property "border" or "border-color".

```
.border, #border, table{ border:4px solid rgb(231, 205, 202) }
```

If only the border color should be changed use the property `border-color`.

```
.border{ border-color:rgb(231, 205, 202) }
```

If you want to add a box shadow in that color use:

Here you see how a box with a 4 pixel `rgb(231, 205, 202)` colored shadow looks like.

```
.boxshadow{ -moz-box-shadow:4px 4px 4px  
4px rgb(231, 205, 202); -webkit-box-  
shadow:4px 4px 4px 4px rgb(231, 205, 202);  
box-shadow:4px 4px 4px 4px rgb(231, 205,  
202) }
```

Background

The CSS property to change the background color of an element to Android 4293381578 is called "background". The background property can be set on classes, ids or directly on the HTML element.

```
.background, #background, body{  
background: rgb(231, 205, 202) }
```

If only the background color should be changed can be used:

```
.background{ background-color: rgb(231,  
205, 202) }
```

This example shows the color as background, it is applied via the CSS property "background".

To optimize and compress your CSS code, you can use our [online CSS compressor and optimizer](#) based on csstidy. If you want to create a linear or radial gradient as background or border, check our [CSS Gradient Generator](#).

Hey! You found this booklet interesting? Support Converting Colors with the new Membership Option!

The pro membership hides all ads, plus gives you double the colors in the color bucket, and more awesome pro features!

[Learn more, Memberships starting at \\$2.50/m!](#)

**Follow me
on Twitter!**

@ConvertingColor