

# Converting Colors

Android(4293422486)

Have a look what the booklet for  
Android(4293422486) contains.

<b>Android(4293422486)</b> .....	3
<b><i>Conversions</i></b> .....	4
<b><i>Details</i></b> .....	6
<b><i>Harmonies</i></b> .....	11
<b><i>Previews</i></b> .....	23
<b><i>Color Blindness Simulation</i></b> .....	26
<b><i>CSS Examples</i></b> .....	29

# **Color**

**Android(4293422486)**

# Conversions

## Conversions Part 1

Format	Color
Hex	E86D96
RGB	232, 109, 150
RGB Percent	91%, 43%, 59%
CMY	0.0902, 0.5725, 0.4118
CMYK	0.00, 0.53, 0.35, 0.09
HSL	340°, 73%, 67%
HSV	340°, 53%, 91%
XYZ	44.2524, 30.2951, 32.3693
YIQ	150.4510, 60.1470, 38.8270

# Conversions

## Conversions Part 2

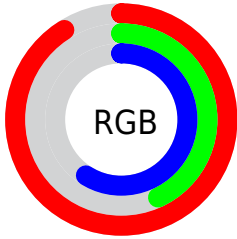
Format	Color
R <sub>Y</sub> B	232, 109, 150
Decimal	15232406
CIE Lab	61.91, 51.72, 0.84
CIE LCh	62, 51.724, 0.933
Yxy	30.2951, 0.4139, 0.2834
Android (android.graphics.Color)	4293422486 (0xFFE86D96)
YUV	150.4510, -0.2223, 71.5185
Hunter-Lab	55.0410, 47.1904, 3.6605

# Details

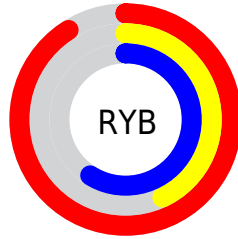
The Android color **4293422486** is a light color, and the websafe version is hex **FF6699**. A complement of this color would be **4285393087**, and the grayscale version is **4288059030**.

A 20% lighter version of the original color is **4294943948**, and **4289541731** is the 20% darker color. If you saturate the color by 10%, you get **4293416583**, and if you desaturate by 10%, it is **4293428389**.

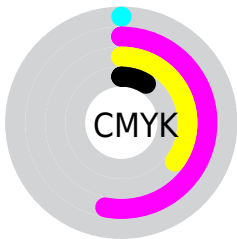
# Distribution



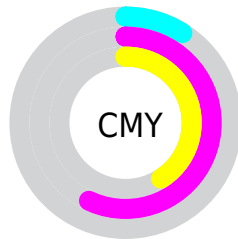
- Red (91%)
- Green (43%)
- Blue (59%)



- Red (91%)
- Yellow (43%)
- Blue (59%)



- Cyan (0%)
- Magenta (53%)
- Yellow (35%)
- Black (9%)



- Cyan (9%)
- Magenta (57%)
- Yellow (41%)

# Brightness & Saturation Gradients

These gradients show how the Android color 4293422486 changes by changing the brightness by 10 percent. The first figure shows a shift by +10% for each color and the second figure -10%.

Similar to the brightness gradients but the following saturation gradients show a change of the Android color 4293422486 by changing the saturation by 10% instead.



 4293422486

 4293422486

4294967295

 4291449468

 4294943948

 4289541731

 4294951144

 4287633228

 4294958591

 4285792309

 4294966015

 4283957280

 4282253320

 4280156161

 4278190080

 4293422486

 4293422486

 4293416583

 4293428389

 4293410679

 4293434293

 4293404520

 4293440452

 4293398616

 4293446356

 4293394509

 4293452259

 4293458163

 4293459967

# Harmonies

## Analogous

The Analogous color harmony consists of three colors that are next to each other on the color wheel.



4291786691



4293422486



4293423977

# Triad

The Triadic color harmony groups three colors that are evenly spaced from another and form a triangle on the color wheel.



4293422486



4286554435



4278232805

# Complementary

The Complementary color scheme is a pair of colors which are on the opposite of each other on the color wheel.



4293422486



4285393087

# Split Complementary

Split-complementary colors differ from the complementary color scheme. The scheme consists of three colors, the original color and two neighbors of the complement color.



4278234051



4293422486



4282427751

# Square

The Square scheme is like the rectangle color scheme, but the four colors are evenly spaced on the color wheel.



4293422486



4289631285



4278234262



4281768689

# Rectangle

The Rectangle color scheme consists of four colors that form a rectangle on the color wheel.



4293422486



4292574544



4278234262



4278233308



# Sweetspot

The Sweet Spot groups the original color and five complimentary colors.



4293422486



4294956772



4290735592



4286605167



4278190080



4286611584



# Same Dimension

The Same Dimension uses a secret algorithm to generate beautiful new colors.



4293422486



4294925458



4293427821



4285753195



4289921084



4281532433



# Inverse Universe

The Inverse Universe completely reimagines the original color for something new.



4293422486



4294925458



4285387752



4285753195



4289921084



4281532433



# Previews

## White Background



This preview shows how the Android color 4293422486 looks on a white background.

## Color Contrast Check

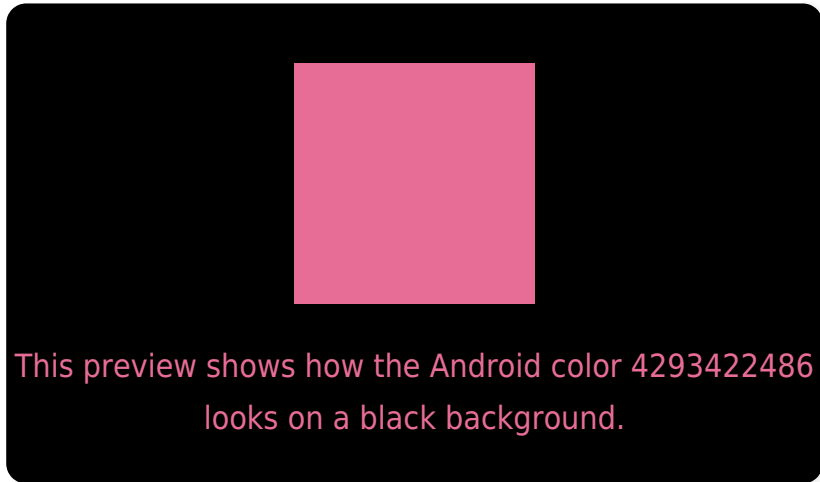
Large Text (above 18pt) WCAG AA × Fail

Any Text WCAG AA × Fail

Large Text (above 18pt) WCAG AAA × Fail

Any Text WCAG AAA × Fail

# Black Background



## Color Contrast Check

Large Text (above 18pt) WCAG AA ✓ Pass

Any Text WCAG AA ✓ Pass

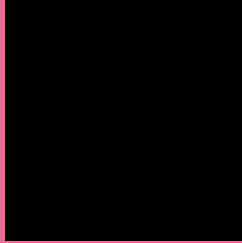
Large Text (above 18pt) WCAG AAA ✓ Pass

Any Text WCAG AAA ✓ Pass

If you want to check with other color combinations, try the [Color Contrast Checker](#).



# Android 4293422486 Background



This preview shows how black text looks on a background with the Android color 4293422486.



This preview shows how white text looks on a background with the Android color 4293422486.

# Color Blindness Simulation

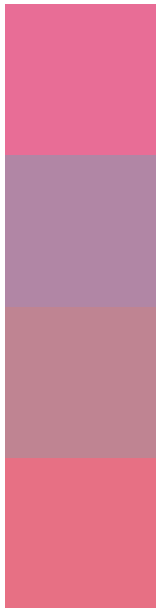
Color vision deficiency is a very complex topic, and I could not describe the different causes any better than Wikipedia does, so if you want to learn more, you should check out their [article about color blindness](#).

## Dichromacy





# Trichromacy



**Original Color**  
4293422486

**Protanomaly**  
4289824421

**Deuteranomaly**  
4290741394

**Tritanomaly**  
4293357700

# Monochromacy



**Original Color**  
4293422486

**Achromatopsia**  
4288059030

**Achromatomaly**  
4290021270

# CSS Examples

## Text

The CSS property to change the color of the text to Android 4293422486 is called "color". The color property can be set on classes, ids or directly on the HTML element.

This example shows how text in the color `rgb(232, 109, 150)` looks like.

```
.text, #text, p{  
    color:rgb(232, 109, 150)  
}
```

If you want to add a text shadow in that color use the text-shadow property, you can generate a text shadow directly with our [CSS Text Shadow Generator](#).

Here you see how black text with a 4 pixel rgb(232, 109, 150) colored shadow looks like.

```
.shadow{ text-shadow: 4px 4px 2px rgb(232, 109, 150) }
```

## Border

The CSS property to change the border of an element to Android 4293422486 is called "border". The border property can be set on classes, ids or directly on the HTML element.

This example shows the color as border, it can be applied via the CSS property "border" or "border-color".

```
.border, #border, table{ border:4px solid rgb(232, 109, 150) }
```

If only the border color should be changed use the property `border-color`.

```
.border{ border-color:rgb(232, 109, 150) }
```

If you want to add a box shadow in that color use:

Here you see how a box with a 4 pixel `rgb(232, 109, 150)` colored shadow looks like.

```
.boxshadow{ -moz-box-shadow:4px 4px 4px  
4px rgb(232, 109, 150); -webkit-box-  
shadow:4px 4px 4px 4px rgb(232, 109, 150);  
box-shadow:4px 4px 4px 4px rgb(232, 109,  
150) }
```

# Background

The CSS property to change the background color of an element to Android 4293422486 is called "background". The background property can be set on classes, ids or directly on the HTML element.

```
.background, #background, body{  
background: rgb(232, 109, 150) }
```

If only the background color should be changed can be used:

```
.background{ background-color: rgb(232,  
109, 150) }
```

This example shows the color as background, it is applied via the CSS property "background".

To optimize and compress your CSS code, you can use our [online CSS compressor and optimizer](#) based on csstidy. If you want to create a linear or radial gradient as background or border, check our [CSS Gradient Generator](#).



Hey! You found this booklet interesting? Support Converting Colors with the new Membership Option!

The pro membership hides all ads, plus gives you double the colors in the color bucket, and more awesome pro features!

**[Learn more, Memberships starting at \\$2.50/m!](#)**

**Follow me  
on Twitter!**

@ConvertingColor