

Converting Colors

Android(4293425047)

Have a look what the booklet for
Android(4293425047) contains.

Android(4293425047)	3
<i>Conversions</i>	4
<i>Details</i>	6
<i>Harmonies</i>	11
<i>Previews</i>	23
<i>Color Blindness Simulation</i>	26
<i>CSS Examples</i>	29

Color

Android(4293425047)

Conversions

Conversions Part 1

Format	Color
Hex	E87797
RGB	232, 119, 151
RGB Percent	91%, 47%, 59%
CMY	0.0902, 0.5333, 0.4078
CMYK	0.00, 0.49, 0.35, 0.09
HSL	343°, 71%, 69%
HSV	343°, 49%, 91%
XYZ	45.4615, 32.5838, 33.1714
YIQ	156.4350, 57.0760, 33.9080

Conversions

Conversions Part 2

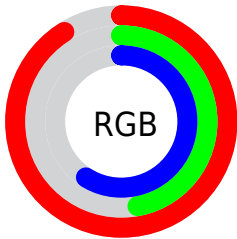
Format	Color
R_{YB}	232, 119, 151
Decimal	15234967
CIE _{Lab}	63.82, 46.96, 3.05
CIE _{LCh}	64, 47.062, 3.716
Yxy	32.5838, 0.4088, 0.2930
Android (android.graphics.Color)	4293425047 (0xFFE87797)
YUV	156.4350, -2.6795, 66.2705
Hunter-Lab	57.0822, 42.2671, 5.5032

Details

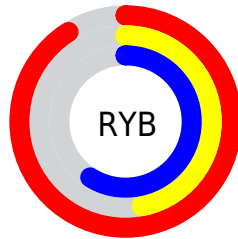
The Android color `4293425047` is a light color, and the websafe version is hex `CC6699`. A complement of this color would be `4286048456`, and the grayscale version is `4288453788`.

A 20% lighter version of the original color is `4294946509`, and `4289544804` is the 20% darker color. If you saturate the color by 10%, you get `4293419142`, and if you desaturate by 10%, it is `4293430952`.

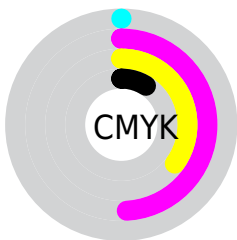
Distribution



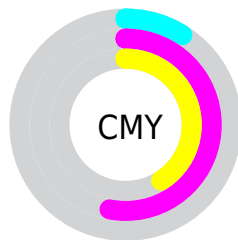
- Red (91%)
- Green (47%)
- Blue (59%)



- Red (91%)
- Yellow (47%)
- Blue (59%)



- Cyan (0%)
- Magenta (49%)
- Yellow (35%)
- Black (9%)



- Cyan (9%)
- Magenta (53%)
- Yellow (41%)

Brightness & Saturation Gradients

These gradients show how the Android color 4293425047 changes by changing the brightness by 10 percent. The first figure shows a shift by +10% for each color and the second figure -10%.

Similar to the brightness gradients but the following saturation gradients show a change of the Android color 4293425047 by changing the saturation by 10% instead.

 4293425047

 4293425047

4294967295

 4291452029

 4294946509

 4289544804

 4294953705

 4287702605

 4294961151

 4285792822

 4284022817

 4282318857

 4280418305

 4278190080

 4293425047

 4293425047

 4293419142

 4293430952

 4293413238

 4293436856

 4293407077

 4293443017

 4293401172

 4293448922

 4293395268

 4293454826

 4293394498

 4293459963

 4293459967

Harmonies

Analogous

The Analogous color harmony consists of three colors that are next to each other on the color wheel.



4292050625



4293425047



4293295470

Triad

The Triadic color harmony groups three colors that are evenly spaced from another and form a triangle on the color wheel.



4293425047



4286817874



4278233573

Complementary

The Complementary color scheme is a pair of colors which are on the opposite of each other on the color wheel.



4293425047



4286048456

Split Complementary

Split-complementary colors differ from the complementary color scheme. The scheme consists of three colors, the original color and two neighbors of the complement color.



4278235080



4293425047



4283084148

Square

The Square scheme is like the rectangle color scheme, but the four colors are evenly spaced on the color wheel.



4293425047



4289632836



4278235295



4284128750

Rectangle

The Rectangle color scheme consists of four colors that form a rectangle on the color wheel.



4293425047



4292511320



4278235295



4278234077

Sweetspot

The Sweet Spot groups the original color and five complimentary colors.



4293425047



4294957540



4291327976



4286605679



4278190080



4286611584

Same Dimension

The Same Dimension uses a secret algorithm to generate beautiful new colors.



4293425047



4294929301



4293431159



4285753195



4289921075



4281532430

Inverse Universe

The Inverse Universe completely reimagines the original color for something new.



4293425047



4294929301



4286042344



4285753195



4289921075



4281532430

Previews

White Background



This preview shows how the Android color 4293425047 looks on a white background.

Color Contrast Check

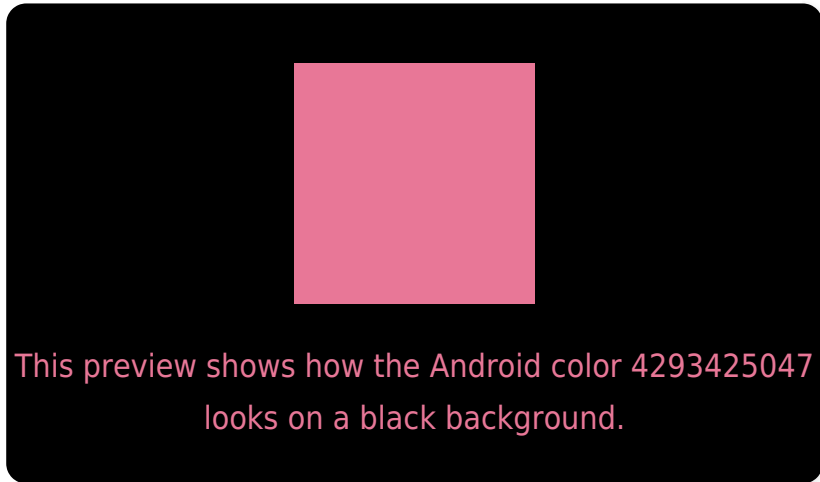
Large Text (above 18pt) WCAG AA × Fail

Any Text WCAG AA × Fail

Large Text (above 18pt) WCAG AAA × Fail

Any Text WCAG AAA × Fail

Black Background



Color Contrast Check

Large Text (above 18pt) WCAG AA ✓ Pass

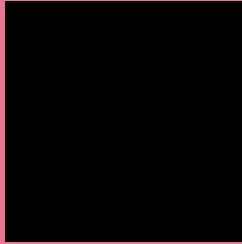
Any Text WCAG AA ✓ Pass

Large Text (above 18pt) WCAG AAA ✓ Pass

Any Text WCAG AAA ✓ Pass

If you want to check with other color combinations, try the [Color Contrast Checker](#).

Android 4293425047 Background



This preview shows how black text looks on a background with the Android color 4293425047.



This preview shows how white text looks on a background with the Android color 4293425047.

Color Blindness Simulation

Color vision deficiency is a very complex topic, and I could not describe the different causes any better than Wikipedia does, so if you want to learn more, you should check out their [article about color blindness](#).

Dichromacy

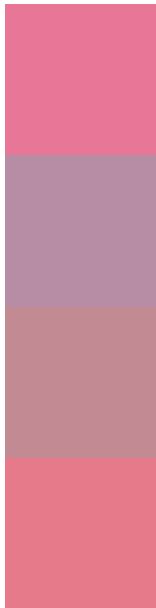


Original Color
4293425047

Protanopia
4288256684

Deuteranopia
4289566354

Trichromacy



Original Color
4293425047

Protanomaly
4290153892

Deuteranomaly
4290939796

Tritanomaly
4293360266

Monochromacy



Original Color
4293425047

Achromatopsia
4288453788

Achromatomaly
4290285466

CSS Examples

Text

The CSS property to change the color of the text to Android 4293425047 is called "color". The color property can be set on classes, ids or directly on the HTML element.

This example shows how text in the color `rgb(232, 119, 151)` looks like.

```
.text, #text, p{  
    color:rgb(232, 119, 151)  
}
```

If you want to add a text shadow in that color use the text-shadow property, you can generate a text shadow directly with our [CSS Text Shadow Generator](#).

Here you see how black text with a 4 pixel rgb(232, 119, 151) colored shadow looks like.

```
.shadow{ text-shadow: 4px 4px 2px rgb(232, 119, 151) }
```

Border

The CSS property to change the border of an element to Android 4293425047 is called "border". The border property can be set on classes, ids or directly on the HTML element.

This example shows the color as border, it can be applied via the CSS property "border" or "border-color".

```
.border, #border, table{ border:4px solid rgb(232, 119, 151) }
```

If only the border color should be changed use the property `border-color`.

```
.border{ border-color:rgb(232, 119, 151) }
```

If you want to add a box shadow in that color use:

Here you see how a box with a 4 pixel `rgb(232, 119, 151)` colored shadow looks like.

```
.boxshadow{ -moz-box-shadow:4px 4px 4px  
4px rgb(232, 119, 151); -webkit-box-  
shadow:4px 4px 4px 4px rgb(232, 119, 151);  
box-shadow:4px 4px 4px 4px rgb(232, 119,  
151) }
```

Background

The CSS property to change the background color of an element to Android 4293425047 is called "background". The background property can be set on classes, ids or directly on the HTML element.

```
.background, #background, body{  
background: rgb(232, 119, 151) }
```

If only the background color should be changed can be used:

```
.background{ background-color: rgb(232,  
119, 151) }
```

This example shows the color as background, it is applied via the CSS property "background".

To optimize and compress your CSS code, you can use our [online CSS compressor and optimizer](#) based on csstidy. If you want to create a linear or radial gradient as background or border, check our [CSS Gradient Generator](#).

Hey! You found this booklet interesting? Support Converting Colors with the new Membership Option!

The pro membership hides all ads, plus gives you double the colors in the color bucket, and more awesome pro features!

[Learn more, Memberships starting at \\$2.50/m!](#)

**Follow me
on Twitter!**

@ConvertingColor