

Converting Colors

Android(4293433262)

Have a look what the booklet for
Android(4293433262) contains.

Android(4293433262)	3
<i>Conversions</i>	4
<i>Details</i>	6
<i>Harmonies</i>	11
<i>Previews</i>	23
<i>Color Blindness Simulation</i>	26
<i>CSS Examples</i>	29

Color

Android(4293433262)

Conversions

Conversions Part 1

Format	Color
Hex	E897AE
RGB	232, 151, 174
RGB Percent	91%, 59%, 68%
CMY	0.0902, 0.4078, 0.3176
CMYK	0.00, 0.35, 0.25, 0.09
HSL	343°, 64%, 75%
HSV	343°, 35%, 91%
XYZ	51.9853, 42.3450, 45.4779
YIQ	177.8410, 40.8930, 24.3250

Conversions

Conversions Part 2

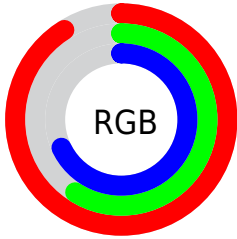
Format	Color
RYB	232, 151, 174
Decimal	15243182
CIELab	71.11, 33.43, 0.69
CIElCh	71, 33.441, 1.175
Yxy	42.3450, 0.3718, 0.3029
Android (android.graphics.Color)	4293433262 (0xFFE897AE)
YUV	177.8410, -1.8936, 47.4974
Hunter-Lab	65.0730, 28.7215, 4.1149

Details

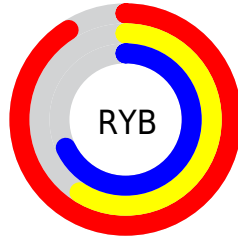
The Android color `4293433262` is a light color, and the websafe version is hex `FF99CC`. A complement of this color would be `4288145617`, and the grayscale version is `4289901234`.

A 20% lighter version of the original color is `4294954725`, and `4289684346` is the 20% darker color. If you saturate the color by 10%, you get `4293427357`, and if you desaturate by 10%, it is `4293439167`.

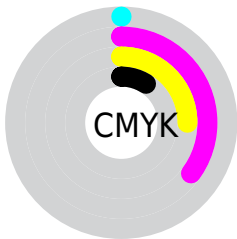
Distribution



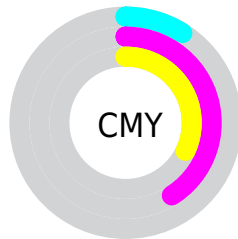
- Red (91%)
- Green (59%)
- Blue (68%)



- Red (91%)
- Yellow (59%)
- Blue (68%)



- Cyan (0%)
- Magenta (35%)
- Yellow (25%)
- Black (9%)



- Cyan (9%)
- Magenta (41%)
- Yellow (32%)

Brightness & Saturation Gradients

These gradients show how the Android color 4293433262 changes by changing the brightness by 10 percent. The first figure shows a shift by +10% for each color and the second figure -10%.

Similar to the brightness gradients but the following saturation gradients show a change of the Android color 4293433262 by changing the saturation by 10% instead.

 4293433262

 4293433262

4294967295

 4291526035

 4294954725

 4289684346

 4294962175

 4287842913

 4286067017

 4284291379

 4282646558

 4281270276

 4278190080

 4293433262

 4293433262

 4293427357

 4293439167

 4293421453

 4293445071

 4293415292

 4293451232

 4293409388

 4293457136

 4293403483

 4293459967

 4293397578

 4293394498

Harmonies

Analogous

The Analogous color harmony consists of three colors that are next to each other on the color wheel.



4292254924



4293433262



4293499536

Triad

The Triadic color harmony groups three colors that are evenly spaced from another and form a triangle on the color wheel.



4293433262



4288853625



4284070371

Complementary

The Complementary color scheme is a pair of colors which are on the opposite of each other on the color wheel.



4293433262



4288145617

Split Complementary

Split-complementary colors differ from the complementary color scheme. The scheme consists of three colors, the original color and two neighbors of the complement color.



4282695373



4293433262



4286495888

Square

The Square scheme is like the rectangle color scheme, but the four colors are evenly spaced on the color wheel.



4293433262



4290948465



4284137390



4287082987

Rectangle

The Rectangle color scheme consists of four colors that form a rectangle on the color wheel.



4293433262



4292976512



4284137390



4283349981

Sweetspot

The Sweet Spot groups the original color and five complimentary colors.



4293433262



4294960877



4291860456



4286607477



4278190080



4286611584

Same Dimension

The Same Dimension uses a secret algorithm to generate beautiful new colors.



4293433262



4294939826



4293437335



4285753195



4289921075



4281532430

Inverse Universe

The Inverse Universe completely reimagines the original color for something new.



4293433262



4294939826



4288141544



4285753195



4289921075



4281532430

Previews

White Background



This preview shows how the Android color 4293433262 looks on a white background.

Color Contrast Check

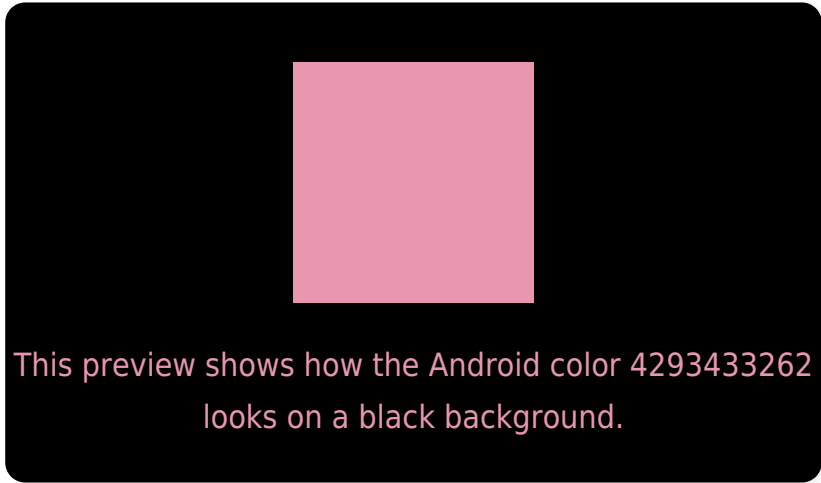
Large Text (above 18pt) WCAG AA × Fail

Any Text WCAG AA × Fail

Large Text (above 18pt) WCAG AAA × Fail

Any Text WCAG AAA × Fail

Black Background



Color Contrast Check

Large Text (above 18pt) WCAG AA ✓ Pass

Any Text WCAG AA ✓ Pass

Large Text (above 18pt) WCAG AAA ✓ Pass

Any Text WCAG AAA ✓ Pass

If you want to check with other color combinations, try the [Color Contrast Checker](#).

Android 4293433262 Background



This preview shows how black text looks on a background with the Android color 4293433262.




This preview shows how white text looks on a background with the Android color 4293433262.

Color Blindness Simulation

Color vision deficiency is a very complex topic, and I could not describe the different causes any better than Wikipedia does, so if you want to learn more, you should check out their [article about color blindness](#).

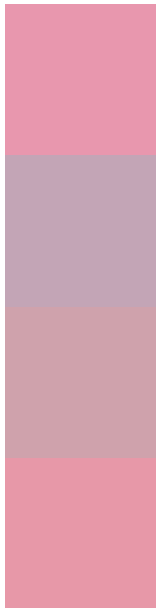
Dichromacy





Tritanopia
4293368228

Trichromacy



Original Color
4293433262

Protanomaly
4291012022

Deuteranomaly
4291797676

Tritanomaly
4293367976

Monochromacy



Original Color
4293433262

Achromatopsia
4289901234

Achromatomaly
4291209393

CSS Examples

Text

The CSS property to change the color of the text to Android 4293433262 is called "color". The color property can be set on classes, ids or directly on the HTML element.

This example shows how text in the color `rgb(232, 151, 174)` looks like.

```
.text, #text, p{  
    color:rgb(232, 151, 174)  
}
```

If you want to add a text shadow in that color use the text-shadow property, you can generate a text shadow directly with our [CSS Text Shadow Generator](#).

Here you see how black text with a 4 pixel rgb(232, 151, 174) colored shadow looks like.

```
.shadow{ text-shadow: 4px 4px 2px rgb(232, 151, 174) }
```

Border

The CSS property to change the border of an element to Android 4293433262 is called "border". The border property can be set on classes, ids or directly on the HTML element.

This example shows the color as border, it can be applied via the CSS property "border" or "border-color".

```
.border, #border, table{ border:4px solid rgb(232, 151, 174) }
```

If only the border color should be changed use the property `border-color`.

```
.border{ border-color:rgb(232, 151, 174) }
```

If you want to add a box shadow in that color use:

Here you see how a box with a 4 pixel `rgb(232, 151, 174)` colored shadow looks like.

```
.boxshadow{ -moz-box-shadow:4px 4px 4px  
4px rgb(232, 151, 174); -webkit-box-  
shadow:4px 4px 4px 4px rgb(232, 151, 174);  
box-shadow:4px 4px 4px 4px rgb(232, 151,  
174) }
```

Background

The CSS property to change the background color of an element to Android 4293433262 is called "background". The background property can be set on classes, ids or directly on the HTML element.

```
.background, #background, body{  
background: rgb(232, 151, 174) }
```

If only the background color should be changed can be used:

```
.background{ background-color: rgb(232,  
151, 174) }
```

This example shows the color as background, it is applied via the CSS property "background".

To optimize and compress your CSS code, you can use our [online CSS compressor and optimizer](#) based on csstidy. If you want to create a linear or radial gradient as background or border, check our [CSS Gradient Generator](#).

Hey! You found this booklet interesting? Support Converting Colors with the new Membership Option!

The pro membership hides all ads, plus gives you double the colors in the color bucket, and more awesome pro features!

[Learn more, Memberships starting at \\$2.50/m!](#)

**Follow me
on Twitter!**

@ConvertingColor