

# Converting Colors

Android(4293435317)

Have a look what the booklet for  
Android(4293435317) contains.

<b>Android(4293435317)</b> .....	3
<b><i>Conversions</i></b> .....	4
<b><i>Details</i></b> .....	6
<b><i>Harmonies</i></b> .....	11
<b><i>Previews</i></b> .....	23
<b><i>Color Blindness Simulation</i></b> .....	26
<b><i>CSS Examples</i></b> .....	29

# **Color**

**Android(4293435317)**

# Conversions

## Conversions Part 1

<b>Format</b>	<b>Color</b>
Hex	E89FB5
RGB	232, 159, 181
RGB Percent	91%, 62%, 71%
CMY	0.0902, 0.3765, 0.2902
CMYK	0.00, 0.31, 0.22, 0.09
HSL	342°, 61%, 77%
HSV	342°, 31%, 91%
XYZ	54.0173, 45.2883, 49.6105
YIQ	183.3350, 36.4460, 22.3180

# Conversions

## Conversions Part 2

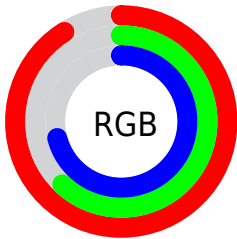
Format	Color
R <sub>Y</sub> B	232, 159, 181
Decimal	15245237
CIE Lab	73.08, 30.19, -0.31
CIE LCh	73, 30.191, 359.411
Yxy	45.2883, 0.3627, 0.3041
Android (android.graphics.Color)	4293435317 (0xFFE89FB5)
YUV	183.3350, -1.1512, 42.6792
Hunter-Lab	67.2966, 25.5087, 3.3994

# Details

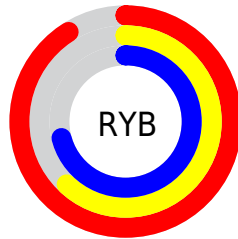
The Android color `4293435317` is a light color, and the websafe version is hex `CC9999`. A complement of this color would be `4288669906`, and the grayscale version is `4290230199`.

A 20% lighter version of the original color is `4294956781`, and `4289686400` is the 20% darker color. If you saturate the color by 10%, you get `4293429413`, and if you desaturate by 10%, it is `4293441221`.

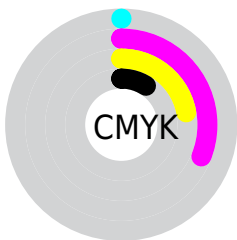
# Distribution



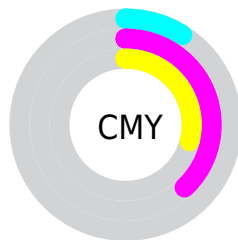
- Red (91%)
- Green (62%)
- Blue (71%)



- Red (91%)
- Yellow (62%)
- Blue (71%)



- Cyan (0%)
- Magenta (31%)
- Yellow (22%)
- Black (9%)



- Cyan (9%)
- Magenta (38%)
- Yellow (29%)

# Brightness & Saturation Gradients

These gradients show how the Android color 4293435317 changes by changing the brightness by 10 percent. The first figure shows a shift by +10% for each color and the second figure -10%.

Similar to the brightness gradients but the following saturation gradients show a change of the Android color 4293435317 by changing the saturation by 10% instead.





4293435317



4293435317

4294967295



4291527834



4294956781



4289686400



4294964223



4287910503



4286134607



4284424760



4282714147



4281204749



4278255616



4278190080

 4293435317

 4293435317

 4293429413

 4293441221

 4293423509

 4293447125

 4293417348

 4293453286

 4293411444

 4293459190

 4293405540

 4293459967

 4293399636

 4293394502

# Harmonies

## Analogous

The Analogous color harmony consists of three colors that are next to each other on the color wheel.



4292256976



4293435317



4293566874

# Triad

The Triadic color harmony groups three colors that are evenly spaced from another and form a triangle on the color wheel.



4293435317



4289378947



4285185762

# Complementary

The Complementary color scheme is a pair of colors which are on the opposite of each other on the color wheel.



4293435317



4288669906

# Split Complementary

Split-complementary colors differ from the complementary color scheme. The scheme consists of three colors, the original color and two neighbors of the complement color.



4284269262



4293435317



4287283350

# Square

The Square scheme is like the rectangle color scheme, but the four colors are evenly spaced on the color wheel.



4293435317



4291342716



4285318066



4287608554

# Rectangle

The Rectangle color scheme consists of four colors that form a rectangle on the color wheel.



4293435317



4293174667



4285318066



4284661980



# Sweetspot

The Sweet Spot groups the original color and five complimentary colors.



4293435317



4294961391



4291928040



4286607734



4278190080



4286611584



# Same Dimension

The Same Dimension uses a secret algorithm to generate beautiful new colors.



4293435317



4294942395



4293438623



4285753195



4289921078



4281532431



# Inverse Universe

The Inverse Universe completely reimagines the original color for something new.



4293435317



4294942395



4288666600



4285753195



4289921078



4281532431



# Previews

## White Background



This preview shows how the Android color 4293435317 looks on a white background.

## Color Contrast Check

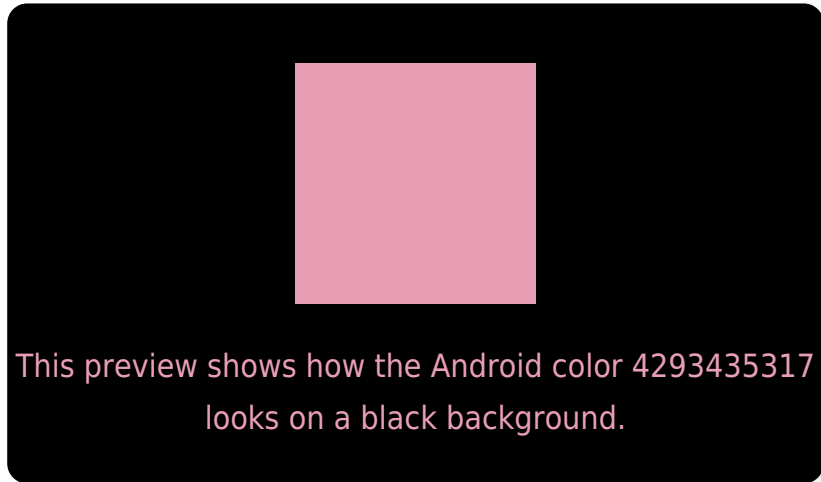
Large Text (above 18pt) WCAG AA × Fail

Any Text WCAG AA × Fail

Large Text (above 18pt) WCAG AAA × Fail

Any Text WCAG AAA × Fail

# Black Background



## Color Contrast Check

Large Text (above 18pt) WCAG AA ✓ Pass

Any Text WCAG AA ✓ Pass

Large Text (above 18pt) WCAG AAA ✓ Pass

Any Text WCAG AAA ✓ Pass

If you want to check with other color combinations, try the [Color Contrast Checker](#).



# Android 4293435317 Background



This preview shows how black text looks on a background with the Android color 4293435317.



This preview shows how white text looks on a background with the Android color 4293435317.

# Color Blindness Simulation

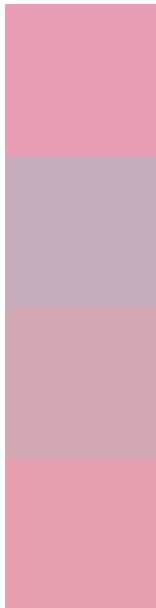
Color vision deficiency is a very complex topic, and I could not describe the different causes any better than Wikipedia does, so if you want to learn more, you should check out their [article about color blindness](#).

## Dichromacy





# Trichromacy



**Original Color**  
4293435317

**Protanomaly**  
4291210429

**Deuteranomaly**  
4291996083

**Tritanomaly**  
4293370032

# Monochromacy



**Original Color**  
4293435317

**Achromatopsia**  
4290230199

**Achromatomaly**  
4291407542

# CSS Examples

## Text

The CSS property to change the color of the text to Android 4293435317 is called "color". The color property can be set on classes, ids or directly on the HTML element.

This example shows how text in the color `rgb(232, 159, 181)` looks like.

```
.text, #text, p{  
    color:rgb(232, 159, 181)  
}
```

If you want to add a text shadow in that color use the text-shadow property, you can generate a text shadow directly with our [CSS Text Shadow Generator](#).

Here you see how black text with a 4 pixel rgb(232, 159, 181) colored shadow looks like.

```
.shadow{ text-shadow: 4px 4px 2px rgb(232, 159, 181) }
```

## Border

The CSS property to change the border of an element to Android 4293435317 is called "border". The border property can be set on classes, ids or directly on the HTML element.

This example shows the color as border, it can be applied via the CSS property "border" or "border-color".

```
.border, #border, table{ border:4px solid rgb(232, 159, 181) }
```

If only the border color should be changed use the property `border-color`.

```
.border{ border-color:rgb(232, 159, 181) }
```

If you want to add a box shadow in that color use:

Here you see how a box with a 4 pixel `rgb(232, 159, 181)` colored shadow looks like.

```
.boxshadow{ -moz-box-shadow:4px 4px 4px  
4px rgb(232, 159, 181); -webkit-box-  
shadow:4px 4px 4px 4px rgb(232, 159, 181);  
box-shadow:4px 4px 4px 4px rgb(232, 159,  
181) }
```

# Background

The CSS property to change the background color of an element to Android 4293435317 is called "background". The background property can be set on classes, ids or directly on the HTML element.

```
.background, #background, body{  
background: rgb(232, 159, 181) }
```

If only the background color should be changed can be used:

```
.background{ background-color: rgb(232,  
159, 181) }
```

This example shows the color as background, it is applied via the CSS property "background".

To optimize and compress your CSS code, you can use our [online CSS compressor and optimizer](#) based on csstidy. If you want to create a linear or radial gradient as background or border, check our [CSS Gradient Generator](#).



Hey! You found this booklet interesting? Support Converting Colors with the new Membership Option!

The pro membership hides all ads, plus gives you double the colors in the color bucket, and more awesome pro features!

**[Learn more, Memberships starting at \\$2.50/m!](#)**

**Follow me  
on Twitter!**

@ConvertingColor