

Converting Colors

Android(4293436083)

Have a look what the booklet for
Android(4293436083) contains.

Android(4293436083)	3
<i>Conversions</i>	4
<i>Details</i>	6
<i>Harmonies</i>	11
<i>Previews</i>	23
<i>Color Blindness Simulation</i>	26
<i>CSS Examples</i>	29

Color

Android(4293436083)

Conversions

Conversions Part 1

Format	Color
Hex	E8A2B3
RGB	232, 162, 179
RGB Percent	91%, 64%, 70%
CMY	0.0902, 0.3647, 0.2980
CMYK	0.00, 0.30, 0.23, 0.09
HSL	345°, 60%, 77%
HSV	345°, 30%, 91%
XYZ	54.3357, 46.2511, 48.7114
YIQ	184.8680, 36.2630, 20.1270

Conversions

Conversions Part 2

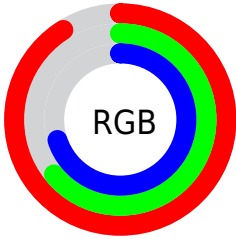
Format	Color
R_{YB}	232, 162, 179
Decimal	15246003
CIE _{Lab}	73.71, 28.30, 1.71
CIE _{LCh}	74, 28.350, 3.450
Yxy	46.2511, 0.3639, 0.3098
Android (android.graphics.Color)	4293436083 (0xFFE8A2B3)
YUV	184.8680, -2.8929, 41.3348
Hunter-Lab	68.0082, 23.5998, 5.1388

Details

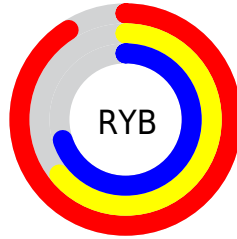
The Android color `4293436083` is a light color, and the websafe version is hex `CC9999`. A complement of this color would be `4288866519`, and the grayscale version is `4290361785`.

A 20% lighter version of the original color is `4294957547`, and `4289687166` is the 20% darker color. If you saturate the color by 10%, you get `4293430177`, and if you desaturate by 10%, it is `4293441989`.

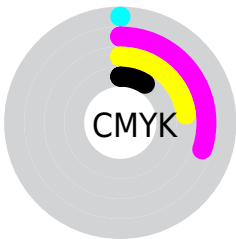
Distribution



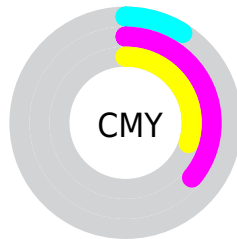
- Red (91%)
- Green (64%)
- Blue (70%)



- Red (91%)
- Yellow (64%)
- Blue (70%)



- Cyan (0%)
- Magenta (30%)
- Yellow (23%)
- Black (9%)



- Cyan (9%)
- Magenta (36%)
- Yellow (30%)

Brightness & Saturation Gradients

These gradients show how the Android color 4293436083 changes by changing the brightness by 10 percent. The first figure shows a shift by +10% for each color and the second figure -10%.

Similar to the brightness gradients but the following saturation gradients show a change of the Android color 4293436083 by changing the saturation by 10% instead.

 4293436083

 4293436083

4294967295

 4291528600

 4294957547

 4289687166


 4294964991

 4287911269

 4286135374

 4284425527

 4282715426

 4281204747

 4278386688

 4278190080

 4293436083

 4293436083

 4293430177

 4293441989

 4293424272

 4293447894

 4293418110

 4293454056

 4293412205

 4293459961

 4293406299

 4293459967

 4293400394

 4293394488

Harmonies

Analogous

The Analogous color harmony consists of three colors that are next to each other on the color wheel.



4292453837



4293436083



4293436826

Triad

The Triadic color harmony groups three colors that are evenly spaced from another and form a triangle on the color wheel.



4293436083



4289313929



4285972195

Complementary

The Complementary color scheme is a pair of colors which are on the opposite of each other on the color wheel.



4293436083



4288866519

Split Complementary

Split-complementary colors differ from the complementary color scheme. The scheme consists of three colors, the original color and two neighbors of the complement color.



4284924881



4293436083



4287349149

Square

The Square scheme is like the rectangle color scheme, but the four colors are evenly spaced on the color wheel.



4293436083



4291146881



4285646007



4288263913

Rectangle

The Rectangle color scheme consists of four colors that form a rectangle on the color wheel.



4293436083



4292979084



4285646007



4285448414

Sweetspot

The Sweet Spot groups the original color and five complimentary colors.



4293436083



4294961390



4292256488



4286607733



4278190080



4286611584

Same Dimension

The Same Dimension uses a secret algorithm to generate beautiful new colors.



4293436083



4294943673



4293440418



4285753194



4289921067



4281532428

Inverse Universe

The Inverse Universe completely reimagines the original color for something new.



4293436083



4294943673



4288861928



4285753194



4289921067



4281532428

Previews

White Background



This preview shows how the Android color 4293436083 looks on a white background.

Color Contrast Check

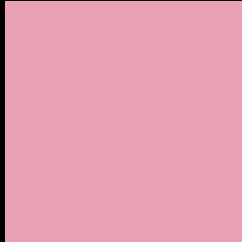
Large Text (above 18pt) WCAG AA × Fail

Any Text WCAG AA × Fail

Large Text (above 18pt) WCAG AAA × Fail

Any Text WCAG AAA × Fail

Black Background



This preview shows how the Android color 4293436083 looks on a black background.

Color Contrast Check

Large Text (above 18pt) WCAG AA ✓ Pass

Any Text WCAG AA ✓ Pass

Large Text (above 18pt) WCAG AAA ✓ Pass

Any Text WCAG AAA ✓ Pass

If you want to check with other color combinations, try the [Color Contrast Checker](#).

Android 4293436083 Background



This preview shows how black text looks on a background with the Android color 4293436083.



This preview shows how white text looks on a background with the Android color 4293436083.

Color Blindness Simulation

Color vision deficiency is a very complex topic, and I could not describe the different causes any better than Wikipedia does, so if you want to learn more, you should check out their [article about color blindness](#).

Dichromacy

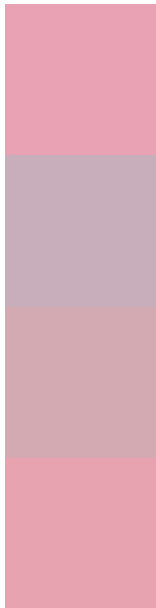


Original Color
4293436083

Protanopia
4290163902

Deuteranopia
4291407793

Trichromacy



Original Color
4293436083

Protanomaly
4291341754

Deuteranomaly
4292127410

Tritanomaly
4293436336

Monochromacy



Original Color
4293436083

Achromatopsia
4290361785

Achromatomaly
4291473847

CSS Examples

Text

The CSS property to change the color of the text to Android 4293436083 is called "color". The color property can be set on classes, ids or directly on the HTML element.

This example shows how text in the color `rgb(232, 162, 179)` looks like.

```
.text, #text, p{  
    color:rgb(232, 162, 179)  
}
```

If you want to add a text shadow in that color use the text-shadow property, you can generate a text shadow directly with our [CSS Text Shadow Generator](#).

Here you see how black text with a 4 pixel rgb(232, 162, 179) colored shadow looks like.

```
.shadow{ text-shadow: 4px 4px 2px rgb(232, 162, 179) }
```

Border

The CSS property to change the border of an element to Android 4293436083 is called "border". The border property can be set on classes, ids or directly on the HTML element.

This example shows the color as border, it can be applied via the CSS property "border" or "border-color".

```
.border, #border, table{ border:4px solid rgb(232, 162, 179) }
```

If only the border color should be changed use the property `border-color`.

```
.border{ border-color:rgb(232, 162, 179) }
```

If you want to add a box shadow in that color use:

Here you see how a box with a 4 pixel `rgb(232, 162, 179)` colored shadow looks like.

```
.boxshadow{ -moz-box-shadow:4px 4px 4px  
4px rgb(232, 162, 179); -webkit-box-  
shadow:4px 4px 4px 4px rgb(232, 162, 179);  
box-shadow:4px 4px 4px 4px rgb(232, 162,  
179) }
```

Background

The CSS property to change the background color of an element to Android 4293436083 is called "background". The background property can be set on classes, ids or directly on the HTML element.

```
.background, #background, body{  
background: rgb(232, 162, 179) }
```

If only the background color should be changed can be used:

```
.background{ background-color: rgb(232,  
162, 179) }
```

This example shows the color as background, it is applied via the CSS property "background".

To optimize and compress your CSS code, you can use our [online CSS compressor and optimizer](#) based on csstidy. If you want to create a linear or radial gradient as background or border, check our [CSS Gradient Generator](#).

Hey! You found this booklet interesting? Support Converting Colors with the new Membership Option!

The pro membership hides all ads, plus gives you double the colors in the color bucket, and more awesome pro features!

[Learn more, Memberships starting at \\$2.50/m!](#)

**Follow me
on Twitter!**

@ConvertingColor