

Converting Colors

Android(4293437112)

Have a look what the booklet for
Android(4293437112) contains.

Android(4293437112)	3
<i>Conversions</i>	4
<i>Details</i>	6
<i>Harmonies</i>	11
<i>Previews</i>	23
<i>Color Blindness Simulation</i>	26
<i>CSS Examples</i>	29

Color

Android(4293437112)

Conversions

Conversions Part 1

Format	Color
Hex	E8A6B8
RGB	232, 166, 184
RGB Percent	91%, 65%, 72%
CMY	0.0902, 0.3490, 0.2784
CMYK	0.00, 0.28, 0.21, 0.09
HSL	344°, 59%, 78%
HSV	344°, 28%, 91%
XYZ	55.5667, 47.8889, 51.6622
YIQ	187.7860, 33.5580, 19.5900

Conversions

Conversions Part 2

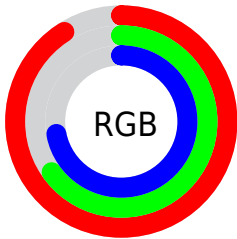
Format	Color
R _Y B	232, 166, 184
Decimal	15247032
CIE _{Lab}	74.75, 26.90, 0.48
CIE _{LCh}	75, 26.902, 1.027
Yxy	47.8889, 0.3582, 0.3087
Android (android.graphics.Color)	4293437112 (0xFFE8A6B8)
YUV	187.7860, -1.8665, 38.7757
Hunter-Lab	69.2018, 22.2261, 4.1787

Details

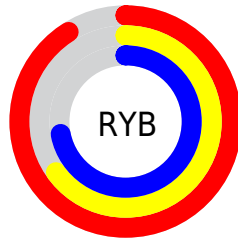
The Android color `4293437112` is a light color, and the websafe version is hex `CC9999`. A complement of this color would be `4289128662`, and the grayscale version is `4290559164`.

A 20% lighter version of the original color is `4294958832`, and `4289687939` is the 20% darker color. If you saturate the color by 10%, you get `4293431207`, and if you desaturate by 10%, it is `4293443017`.

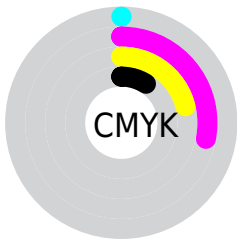
Distribution



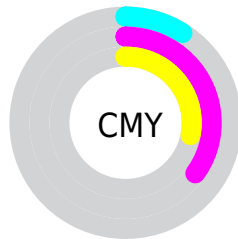
- Red (91%)
- Green (65%)
- Blue (72%)



- Red (91%)
- Yellow (65%)
- Blue (72%)



- Cyan (0%)
- Magenta (28%)
- Yellow (21%)
- Black (9%)



- Cyan (9%)
- Magenta (35%)
- Yellow (28%)

Brightness & Saturation Gradients


These gradients show how the Android color 4293437112 changes by changing the brightness by 10 percent. The first figure shows a shift by +10% for each color and the second figure -10%.

Similar to the brightness gradients but the following saturation gradients show a change of the Android color 4293437112 by changing the saturation by 10% instead.

 4293437112

 4293437112

4294967295

 4291529629

 4294958832

 4289687939


 4294966015

 4287912042

 4286136402

 4284426555

 4282782245

 4281270288

 4278910976

 4278190080

 4293437112

 4293437112

 4293431207

 4293443017

 4293425302

 4293448922

 4293419141

 4293455083

 4293413237

 4293459963

 4293407332

 4293459967

 4293401427

 4293395522

 4293394495

Harmonies

Analogous

The Analogous color harmony consists of three colors that are next to each other on the color wheel.



4292455120



4293437112



4293503136

Triad

The Triadic color harmony groups three colors that are evenly spaced from another and form a triangle on the color wheel.



4293437112



4289707661



4286366179

Complementary

The Complementary color scheme is a pair of colors which are on the opposite of each other on the color wheel.



4293437112



4289128662

Split Complementary

Split-complementary colors differ from the complementary color scheme. The scheme consists of three colors, the original color and two neighbors of the complement color.



4285515217



4293437112



4287808671

Square

The Square scheme is like the rectangle color scheme, but the four colors are evenly spaced on the color wheel.



4293437112



4291409799



4286170808



4288396009

Rectangle

The Rectangle color scheme consists of four colors that form a rectangle on the color wheel.



4293437112



4293110930



4286170808



4285907934

Sweetspot

The Sweet Spot groups the original color and five complimentary colors.



4293437112



4294961390



4292191976



4286607733



4278190080



4286611584

Same Dimension

The Same Dimension uses a secret algorithm to generate beautiful new colors.



4293437112



4294944960



4293440678



4285753194



4289921073



4281532430

Inverse Universe

The Inverse Universe completely reimagines the original color for something new.



4293437112



4294944960



4289125096



4285753194



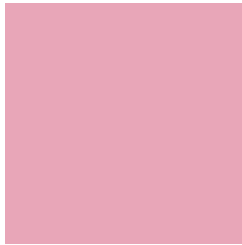
4289921073



4281532430

Previews

White Background



This preview shows how the Android color 4293437112 looks on a white background.

Color Contrast Check

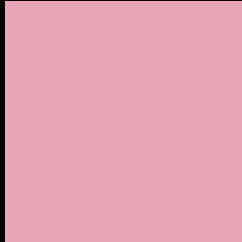
Large Text (above 18pt) WCAG AA × Fail

Any Text WCAG AA × Fail

Large Text (above 18pt) WCAG AAA × Fail

Any Text WCAG AAA × Fail

Black Background



This preview shows how the Android color 4293437112 looks on a black background.

Color Contrast Check

Large Text (above 18pt) WCAG AA ✓ Pass

Any Text WCAG AA ✓ Pass

Large Text (above 18pt) WCAG AAA ✓ Pass

Any Text WCAG AAA ✓ Pass

If you want to check with other color combinations, try the [Color Contrast Checker](#).

Android 4293437112 Background



This preview shows how black text looks on a background with the Android color 4293437112.



This preview shows how white text looks on a background with the Android color 4293437112.

Color Blindness Simulation

Color vision deficiency is a very complex topic, and I could not describe the different causes any better than Wikipedia does, so if you want to learn more, you should check out their [article about color blindness](#).


Dichromacy



Original Color
4293437112

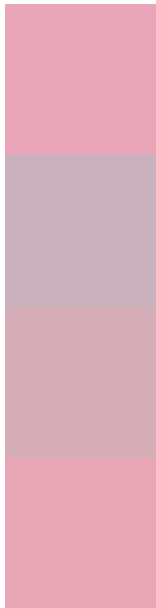
Protanopia
4290361282

Deuteranopia
4291539638



Tritanopia
4293371828

Trichromacy



Original Color
4293437112

Protanomaly
4291473854

Deuteranomaly
4292259511

Tritanomaly
4293371829

Monochromacy



Original Color
4293437112

Achromatopsia
4290559164

Achromatomaly
4291605691

CSS Examples

Text

The CSS property to change the color of the text to Android 4293437112 is called "color". The color property can be set on classes, ids or directly on the HTML element.

This example shows how text in the color `rgb(232, 166, 184)` looks like.

```
.text, #text, p{  
    color:rgb(232, 166, 184)  
}
```

If you want to add a text shadow in that color use the text-shadow property, you can generate a text shadow directly with our [CSS Text Shadow Generator](#).

Here you see how black text with a 4 pixel rgb(232, 166, 184) colored shadow looks like.

```
.shadow{ text-shadow: 4px 4px 2px rgb(232, 166, 184) }
```

Border

The CSS property to change the border of an element to Android 4293437112 is called "border". The border property can be set on classes, ids or directly on the HTML element.

This example shows the color as border, it can be applied via the CSS property "border" or "border-color".

```
.border, #border, table{ border:4px solid rgb(232, 166, 184) }
```

If only the border color should be changed use the property `border-color`.

```
.border{ border-color:rgb(232, 166, 184) }
```

If you want to add a box shadow in that color use:

Here you see how a box with a 4 pixel `rgb(232, 166, 184)` colored shadow looks like.

```
.boxshadow{ -moz-box-shadow:4px 4px 4px  
4px rgb(232, 166, 184); -webkit-box-  
shadow:4px 4px 4px 4px rgb(232, 166, 184);  
box-shadow:4px 4px 4px 4px rgb(232, 166,  
184) }
```

Background

The CSS property to change the background color of an element to Android 4293437112 is called "background". The background property can be set on classes, ids or directly on the HTML element.

```
.background, #background, body{  
background: rgb(232, 166, 184) }
```

If only the background color should be changed can be used:

```
.background{ background-color: rgb(232,  
166, 184) }
```

This example shows the color as background, it is applied via the CSS property "background".

To optimize and compress your CSS code, you can use our [online CSS compressor and optimizer](#) based on csstidy. If you want to create a linear or radial gradient as background or border, check our [CSS Gradient Generator](#).

Hey! You found this booklet interesting? Support Converting Colors with the new Membership Option!

The pro membership hides all ads, plus gives you double the colors in the color bucket, and more awesome pro features!

[Learn more, Memberships starting at \\$2.50/m!](#)

**Follow me
on Twitter!**

@ConvertingColor