

# Converting Colors

Android(4293441252)

Have a look what the booklet for  
Android(4293441252) contains.

<b>Android(4293441252)</b> .....	3
<i><b>Conversions</b></i> .....	4
<i><b>Details</b></i> .....	6
<i><b>Harmonies</b></i> .....	11
<i><b>Previews</b></i> .....	23
<i><b>Color Blindness Simulation</b></i> .....	26
<i><b>CSS Examples</b></i> .....	29

# **Color**

**Android(4293441252)**

# Conversions

## Conversions Part 1

<b>Format</b>	<b>Color</b>
Hex	E8B6E4
RGB	232, 182, 228
RGB Percent	91%, 71%, 89%
CMY	0.0902, 0.2863, 0.1059
CMYK	0.00, 0.22, 0.02, 0.09
HSL	305°, 52%, 81%
HSV	305°, 22%, 91%
XYZ	64.0103, 56.2131, 80.8753
YIQ	202.1940, 15.0340, 24.9060

# Conversions

## Conversions Part 2

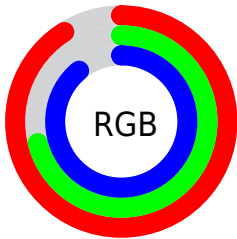
<b>Format</b>	<b>Color</b>
R <sub>Y</sub> B	232, 182, 228
Decimal	15251172
CIE <sub>Lab</sub>	79.73, 25.62, -16.07
CIE <sub>LCh</sub>	80, 30.239, 327.906
Y <sub>xy</sub>	56.2131, 0.3183, 0.2795
Android (android.graphics.Color)	4293441252 (0xFFE8B6E4)
Y <sub>UV</sub>	202.1940, 12.7224, 26.1399
Hunter-Lab	74.9754, 21.1874, -11.4728

# Details

The Android color `4293441252` is a light color, and the websafe version is hex `FFCCFF`. A complement of this color would be `4290177210`, and the grayscale version is `4291480266`.

A 20% lighter version of the original color is `4294962943`, and `4289757613` is the 20% darker color. If you saturate the color by 10%, you get `4293435362`, and if you desaturate by 10%, it is `4293447142`.

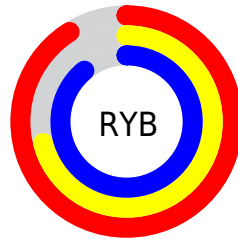
# Distribution



Red (91%)

Green (71%)

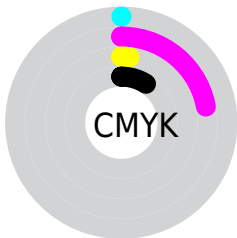
Blue (89%)



Red (91%)

Yellow (71%)

Blue (89%)

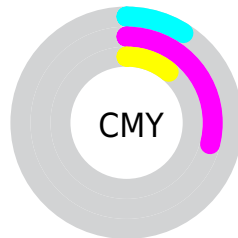


Cyan (0%)

Magenta (22%)

Yellow (2%)

Black (9%)



Cyan (9%)

Magenta (29%)

Yellow (11%)

# Brightness & Saturation Gradients

These gradients show how the Android color 4293441252 changes by changing the brightness by 10 percent. The first figure shows a shift by +10% for each color and the second figure -10%.

Similar to the brightness gradients but the following saturation gradients show a change of the Android color 4293441252 by changing the saturation by 10% instead.



 4293441252

 4293441252

4294967295

 4291599304

 4294962943

 4289757613

 4287981458

 4286271352

 4284561247

 4282982472

 4281403953

 4280221724

 4278190080

 4293441252

 4293441252

 4293435362

 4293447142

 4293429472

 4293453032

 4293423326

 4293459178

 4293417437

 4293459947

 4293411547

 4293459949

 4293405657

 4293459951

 4293399767

 4293459953

 4293394645

 4293459955

 4293459957

# Harmonies

## Analogous

The Analogous color harmony consists of three colors that are next to each other on the color wheel.



4291280887



4293441252



4294685129

# Triad

The Triadic color harmony groups three colors that are evenly spaced from another and form a triangle on the color wheel.



4293441252



4292658061



4285584863

# Complementary

The Complementary color scheme is a pair of colors which are on the opposite of each other on the color wheel.



4293441252



4290177210

# Split Complementary

Split-complementary colors differ from the complementary color scheme. The scheme consists of three colors, the original color and two neighbors of the complement color.



4286633411



4293441252



4290694291

# Square

The Square scheme is like the rectangle color scheme, but the four colors are evenly spaced on the color wheel.



4293441252



4294163095



4288598695



4286370037

# Rectangle

The Rectangle color scheme consists of four colors that form a rectangle on the color wheel.



4293441252



4294947254



4288598695



4285781462



# Sweetspot

The Sweet Spot groups the original color and five complimentary colors.



4293441252



4294963454



4290361064



4286609279



4278190080



4286611584



# Same Dimension

The Same Dimension uses a secret algorithm to generate beautiful new colors.



4293441252



4294950394



4293441228



4285753202



4289921188



4281532463



# Inverse Universe

The Inverse Universe completely reimagines the original color for something new.



4293441252



4294950394



4290177234



4285753202



4289921188



4281532463



# Previews

## White Background



This preview shows how the Android color 4293441252 looks on a white background.

## Color Contrast Check

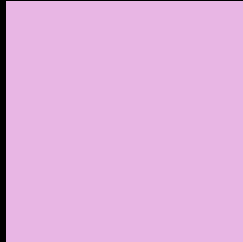
Large Text (above 18pt) WCAG AA × Fail

Any Text WCAG AA × Fail

Large Text (above 18pt) WCAG AAA × Fail

Any Text WCAG AAA × Fail

# Black Background



This preview shows how the Android color 4293441252 looks on a black background.

## Color Contrast Check

Large Text (above 18pt) WCAG AA ✓ Pass

Any Text WCAG AA ✓ Pass

Large Text (above 18pt) WCAG AAA ✓ Pass

Any Text WCAG AAA ✓ Pass

If you want to check with other color combinations, try the [Color Contrast Checker](#).



# Android 4293441252 Background



This preview shows how black text looks on a background with the Android color 4293441252.



This preview shows how white text looks on a background with the Android color 4293441252.

# Color Blindness Simulation

Color vision deficiency is a very complex topic, and I could not describe the different causes any better than Wikipedia does, so if you want to learn more, you should check out their [article about color blindness](#).

## Dichromacy





**Tritanopia**  
4293180361

# Trichromacy



**Original Color**  
4293441252



**Protanomaly**  
4291674090



**Deuteranomaly**  
4292263395

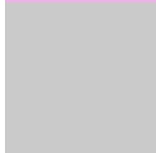


**Tritanomaly**  
4293245395

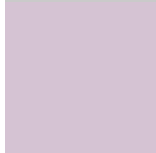
# Monochromacy



**Original Color**  
4293441252



**Achromatopsia**  
4291480266



**Achromatomaly**  
4292199379

# CSS Examples

## Text

The CSS property to change the color of the text to Android 4293441252 is called "color". The color property can be set on classes, ids or directly on the HTML element.

This example shows how text in the color `rgb(232, 182, 228)` looks like.

```
.text, #text, p{  
    color:rgb(232, 182, 228)  
}
```

If you want to add a text shadow in that color use the text-shadow property, you can generate a text shadow directly with our [CSS Text Shadow Generator](#).

Here you see how black text with a 4 pixel rgb(232, 182, 228) colored shadow looks like.

```
.shadow{ text-shadow: 4px 4px 2px rgb(232, 182, 228) }
```

## Border

The CSS property to change the border of an element to Android 4293441252 is called "border". The border property can be set on classes, ids or directly on the HTML element.

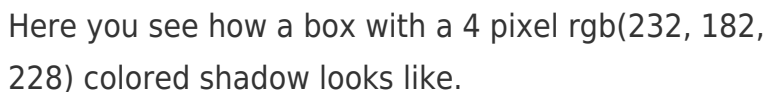
This example shows the color as border, it can be applied via the CSS property "border" or "border-color".

```
.border, #border, table{ border:4px solid rgb(232, 182, 228) }
```

If only the border color should be changed use the property `border-color`.

```
.border{ border-color:rgb(232, 182, 228) }
```

If you want to add a box shadow in that color use:



Here you see how a box with a 4 pixel `rgb(232, 182, 228)` colored shadow looks like.

```
.boxshadow{ -moz-box-shadow:4px 4px 4px 4px rgb(232, 182, 228); -webkit-box-shadow:4px 4px 4px 4px rgb(232, 182, 228); box-shadow:4px 4px 4px 4px rgb(232, 182, 228) }
```

# Background

The CSS property to change the background color of an element to Android 4293441252 is called "background". The background property can be set on classes, ids or directly on the HTML element.

```
.background, #background, body{  
background: rgb(232, 182, 228) }
```

If only the background color should be changed can be used:

```
.background{ background-color: rgb(232,  
182, 228) }
```

This example shows the color as background, it is applied via the CSS property "background".

To optimize and compress your CSS code, you can use our [online CSS compressor and optimizer](#) based on csstidy. If you want to create a linear or radial gradient as background or border, check our [CSS Gradient Generator](#).



Hey! You found this booklet interesting? Support Converting Colors with the new Membership Option!

The pro membership hides all ads, plus gives you double the colors in the color bucket, and more awesome pro features!

**[Learn more, Memberships starting at \\$2.50/m!](#)**

**Follow me  
on Twitter!**

@ConvertingColor