

# Converting Colors

Android(4293442749)

Have a look what the booklet for  
Android(4293442749) contains.

<b>Android(4293442749)</b> .....	3
<b><i>Conversions</i></b> .....	4
<b><i>Details</i></b> .....	6
<b><i>Harmonies</i></b> .....	11
<b><i>Previews</i></b> .....	23
<b><i>Color Blindness Simulation</i></b> .....	26
<b><i>CSS Examples</i></b> .....	29

# **Color**

**Android(4293442749)**

# Conversions

## Conversions Part 1

Format	Color
Hex	E8BCBD
RGB	232, 188, 189
RGB Percent	91%, 74%, 74%
CMY	0.0902, 0.2627, 0.2588
CMYK	0.00, 0.19, 0.19, 0.09
HSL	359°, 49%, 82%
HSV	359°, 19%, 91%
XYZ	60.4472, 56.7964, 55.9210
YIQ	201.2700, 25.9030, 9.6390

# Conversions

## Conversions Part 2

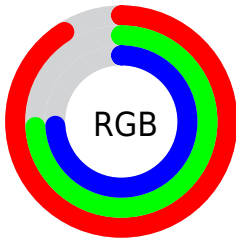
Format	Color
R <sub>Y</sub> B	232, 188, 189
Decimal	15252669
CIE Lab	80.06, 15.91, 5.46
CIE LCh	80, 16.820, 18.956
Yxy	56.7964, 0.3491, 0.3280
Android (android.graphics.Color)	4293442749 (0xFFE8BCBD)
YUV	201.2700, -6.0491, 26.9502
Hunter-Lab	75.3634, 11.2849, 8.7601

# Details

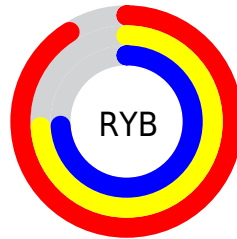
The Android color `4293442749` is a light color, and the websafe version is hex `FFCCCC`. A complement of this color would be `4290570471`, and the grayscale version is `4291414473`.

A 20% lighter version of the original color is `4294964469`, and `4289759112` is the 20% darker color. If you saturate the color by 10%, you get `4293436838`, and if you desaturate by 10%, it is `4293448660`.

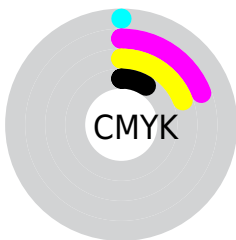
# Distribution



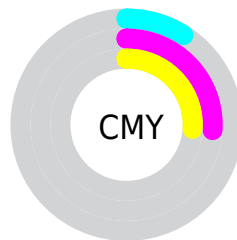
- Red (91%)
- Green (74%)
- Blue (74%)



- Red (91%)
- Yellow (74%)
- Blue (74%)



- Cyan (0%)
- Magenta (19%)
- Yellow (19%)
- Black (9%)



- Cyan (9%)
- Magenta (26%)
- Yellow (26%)

# Brightness & Saturation Gradients

These gradients show how the Android color 4293442749 changes by changing the brightness by 10 percent. The first figure shows a shift by +10% for each color and the second figure -10%.

Similar to the brightness gradients but the following saturation gradients show a change of the Android color 4293442749 by changing the saturation by 10% instead.



 4293442749

 4293442749

4294967295

 4291600802

 4294964469

 4289759112

 4287982958

 4286207318

 4284562751

 4282918697

 4281405973

 4280156161

 4278190080

 4293442749

 4293442749

 4293436838

 4293448660

 4293430928

 4293454570

 4293424761

 4293459967

 4293418850

 4293412940

 4293407029

 4293401118

 4293394952

 4293394437

# Harmonies

## Analogous

The Analogous color harmony consists of three colors that are next to each other on the color wheel.



4293115085



4293442749



4293181359

# Triad

The Triadic color harmony groups three colors that are evenly spaced from another and form a triangle on the color wheel.



4293442749



4290170290



4289645285

# Complementary

The Complementary color scheme is a pair of colors which are on the opposite of each other on the color wheel.



4293442749



4290570471

# Split Complementary

Split-complementary colors differ from the complementary color scheme. The scheme consists of three colors, the original color and two neighbors of the complement color.



4288794334



4293442749



4289187776

# Square

The Square scheme is like the rectangle color scheme, but the four colors are evenly spaced on the color wheel.



4293442749



4291348905



4288598224



4290954468

# Rectangle

The Rectangle color scheme consists of four colors that form a rectangle on the color wheel.



4293442749



4292723370



4288598224



4289317859



# Sweetspot

The Sweet Spot groups the original color and five complimentary colors.



4293442749



4294963440



4293377256



4286609271



4278190080



4286611584



# Same Dimension

The Same Dimension uses a secret algorithm to generate beautiful new colors.



4293442749



4294952134



4293448124



4285753192



4289921028



4281532417



# Inverse Universe

The Inverse Universe completely reimagines the original color for something new.



4293442749



4294952134



4290565096



4285753192



4289921028

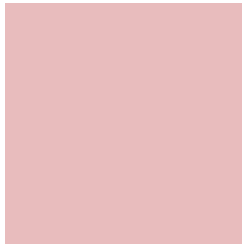


4281532417



# Previews

## White Background



This preview shows how the Android color 4293442749 looks on a white background.

## Color Contrast Check

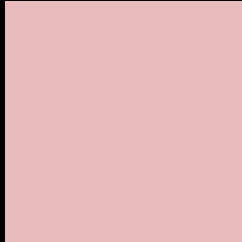
Large Text (above 18pt) WCAG AA × Fail

Any Text WCAG AA × Fail

Large Text (above 18pt) WCAG AAA × Fail

Any Text WCAG AAA × Fail

# Black Background



This preview shows how the Android color 4293442749 looks on a black background.

## Color Contrast Check

Large Text (above 18pt) WCAG AA ✓ Pass

Any Text WCAG AA ✓ Pass

Large Text (above 18pt) WCAG AAA ✓ Pass

Any Text WCAG AAA ✓ Pass

If you want to check with other color combinations, try the [Color Contrast Checker](#).



# Android 4293442749 Background



This preview shows how black text looks on a background with the Android color 4293442749.



This preview shows how white text looks on a background with the Android color 4293442749.

# Color Blindness Simulation

Color vision deficiency is a very complex topic, and I could not describe the different causes any better than Wikipedia does, so if you want to learn more, you should check out their [article about color blindness](#).

## Dichromacy



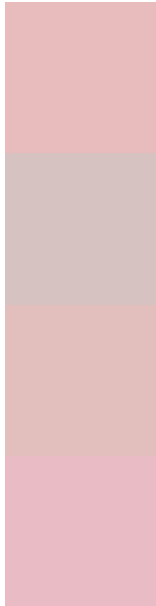
**Original Color**  
4293442749

**Protanopia**  
4291544770

**Deuteranopia**  
4292788412



# Trichromacy



**Original Color**  
4293442749

**Protanomaly**  
4292264640

**Deuteranomaly**  
4293050300

**Tritanomaly**  
4293508037

# Monochromacy



**Original Color**  
4293442749

**Achromatopsia**  
4291414473

**Achromatomaly**  
4292134085

# CSS Examples

## Text

The CSS property to change the color of the text to Android 4293442749 is called "color". The color property can be set on classes, ids or directly on the HTML element.

This example shows how text in the color `rgb(232, 188, 189)` looks like.

```
.text, #text, p{  
    color:rgb(232, 188, 189)  
}
```

If you want to add a text shadow in that color use the text-shadow property, you can generate a text shadow directly with our [CSS Text Shadow Generator](#).

Here you see how black text with a 4 pixel rgb(232, 188, 189) colored shadow looks like.

```
.shadow{ text-shadow: 4px 4px 2px rgb(232, 188, 189) }
```

## Border

The CSS property to change the border of an element to Android 4293442749 is called "border". The border property can be set on classes, ids or directly on the HTML element.

This example shows the color as border, it can be applied via the CSS property "border" or "border-color".

```
.border, #border, table{ border:4px solid rgb(232, 188, 189) }
```

If only the border color should be changed use the property `border-color`.

```
.border{ border-color:rgb(232, 188, 189) }
```

If you want to add a box shadow in that color use:

Here you see how a box with a 4 pixel `rgb(232, 188, 189)` colored shadow looks like.

```
.boxshadow{ -moz-box-shadow:4px 4px 4px  
4px rgb(232, 188, 189); -webkit-box-  
shadow:4px 4px 4px 4px rgb(232, 188, 189);  
box-shadow:4px 4px 4px 4px rgb(232, 188,  
189) }
```

# Background

The CSS property to change the background color of an element to Android 4293442749 is called "background". The background property can be set on classes, ids or directly on the HTML element.

```
.background, #background, body{  
background: rgb(232, 188, 189) }
```

If only the background color should be changed can be used:

```
.background{ background-color: rgb(232,  
188, 189) }
```

This example shows the color as background, it is applied via the CSS property "background".

To optimize and compress your CSS code, you can use our [online CSS compressor and optimizer](#) based on csstidy. If you want to create a linear or radial gradient as background or border, check our [CSS Gradient Generator](#).



Hey! You found this booklet interesting? Support Converting Colors with the new Membership Option!

The pro membership hides all ads, plus gives you double the colors in the color bucket, and more awesome pro features!

**[Learn more, Memberships starting at \\$2.50/m!](#)**

**Follow me  
on Twitter!**

@ConvertingColor