

# Converting Colors

Android(4293443765)

Have a look what the booklet for  
Android(4293443765) contains.

<b>Android(4293443765)</b> .....	3
<b><i>Conversions</i></b> .....	4
<b><i>Details</i></b> .....	6
<b><i>Harmonies</i></b> .....	11
<b><i>Previews</i></b> .....	23
<b><i>Color Blindness Simulation</i></b> .....	26
<b><i>CSS Examples</i></b> .....	29

# **Color**

**Android(4293443765)**

# Conversions

## Conversions Part 1

Format	Color
Hex	E8C0B5
RGB	232, 192, 181
RGB Percent	91%, 75%, 71%
CMY	0.0902, 0.2471, 0.2902
CMYK	0.00, 0.17, 0.22, 0.09
HSL	13°, 53%, 81%
HSV	13°, 22%, 91%
XYZ	60.4688, 58.1913, 51.7610
YIQ	202.7060, 27.3710, 5.0590

# Conversions

## Conversions Part 2

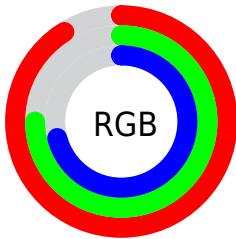
Format	Color
<a href="#">RYB</a>	<a href="#">232, 195, 181</a>
Decimal	<a href="#">15253685</a>
CIELab	<a href="#">80.85, 12.60, 10.88</a>
CIELCh	<a href="#">81, 16.647, 40.826</a>
Yxy	<a href="#">58.1913, 0.3548, 0.3415</a>
Android (android.graphics.Color)	<a href="#">4293443765 (0xFFE8C0B5)</a>
YUV	<a href="#">202.7060, -10.7011, 25.6908</a>
Hunter-Lab	<a href="#">76.2832, 7.9993, 13.1677</a>

# Details

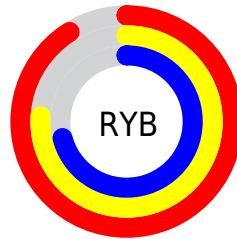
The Android color `4293443765` is a light color, and the websafe version is hex `FFCCCC`. A complement of this color would be `4290108904`, and the grayscale version is `4291546059`.

A 20% lighter version of the original color is `4294965485`, and `4289759872` is the 20% darker color. If you saturate the color by 10%, you get `4293439134`, and if you desaturate by 10%, it is `4293448396`.

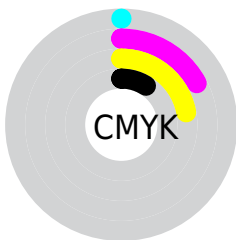
# Distribution



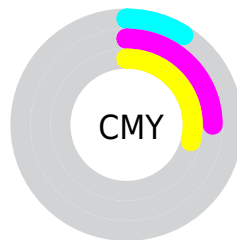
- Red (91%)
- Green (75%)
- Blue (71%)



- Red (91%)
- Yellow (76%)
- Blue (71%)



- Cyan (0%)
- Magenta (17%)
- Yellow (22%)
- Black (9%)



- Cyan (9%)
- Magenta (25%)
- Yellow (29%)

# Brightness & Saturation Gradients

These gradients show how the Android color 4293443765 changes by changing the brightness by 10 percent. The first figure shows a shift by +10% for each color and the second figure -10%.

Similar to the brightness gradients but the following saturation gradients show a change of the Android color 4293443765 by changing the saturation by 10% instead.



 4293443765

 4293443765

4294967295

 4291601818

 4294965485

 4289759872

 4287983975

 4286208079

 4284563768

 4282919715

 4281406989

 4280025088

 4278190080

 4293443765

 4293443765

 4293439134

 4293448396

 4293434503

 4293453027

 4293429615

 4293457915

 4293424984

 4293459967

 4293420353

 4293415722

 4293411091

 4293407232

# Harmonies

## Analogous

The Analogous color harmony consists of three colors that are next to each other on the color wheel.



4293508803



4293443765



4292854956

# Triad

The Triadic color harmony groups three colors that are evenly spaced from another and form a triangle on the color wheel.



4293443765



4289581502



4290758887

# Complementary

The Complementary color scheme is a pair of colors which are on the opposite of each other on the color wheel.



4293443765



4290108904

# Split Complementary

Split-complementary colors differ from the complementary color scheme. The scheme consists of three colors, the original color and two neighbors of the complement color.



4289514982



4293443765



4288860878

# Square

The Square scheme is like the rectangle color scheme, but the four colors are evenly spaced on the color wheel.



4293443765



4290629297



4288795100



4292068320

# Rectangle

The Rectangle color scheme consists of four colors that form a rectangle on the color wheel.



4293443765



4292200618



4288795100



4290300647

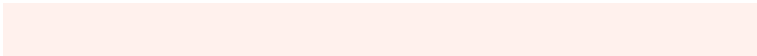


# Sweetspot

The Sweet Spot groups the original color and five complimentary colors.



4293443765



4294963693



4293440990



4286609525



4278190080



4286611584



# Same Dimension

The Same Dimension uses a secret algorithm to generate beautiful new colors.



4293443765



4294953917



4293450165



4285753959



4289930752



4281535232

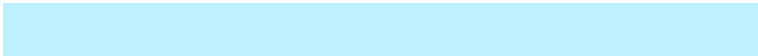


# Inverse Universe

The Inverse Universe completely reimagines the original color for something new.



4290108904



4290638335



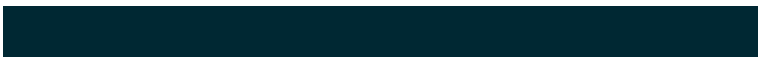
4290102504



4284969075



4278226099



4278200371



# Previews

## White Background



This preview shows how the Android color 4293443765 looks on a white background.

## Color Contrast Check

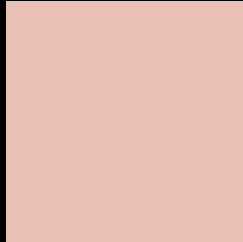
Large Text (above 18pt) WCAG AA × Fail

Any Text WCAG AA × Fail

Large Text (above 18pt) WCAG AAA × Fail

Any Text WCAG AAA × Fail

# Black Background



This preview shows how the Android color 4293443765 looks on a black background.

## Color Contrast Check

Large Text (above 18pt) WCAG AA ✓ Pass

Any Text WCAG AA ✓ Pass

Large Text (above 18pt) WCAG AAA ✓ Pass

Any Text WCAG AAA ✓ Pass

If you want to check with other color combinations, try the [Color Contrast Checker](#).



# Android 4293443765 Background



This preview shows how black text looks on a background with the Android color 4293443765.



This preview shows how white text looks on a background with the Android color 4293443765.

# Color Blindness Simulation

Color vision deficiency is a very complex topic, and I could not describe the different causes any better than Wikipedia does, so if you want to learn more, you should check out their [article about color blindness](#).


## Dichromacy



**Original Color**  
4293443765

**Protanopia**  
4291872953

**Deuteranopia**  
4293182133



**Tritanopia**  
4293639627

# Trichromacy



**Original Color**  
4293443765

**Protanomaly**  
4292462008

**Deuteranomaly**  
4293247413

**Tritanomaly**  
4293574339

# Monochromacy



**Original Color**  
4293443765

**Achromatopsia**  
4291546059

**Achromatomaly**  
4292265923

# CSS Examples

## Text

The CSS property to change the color of the text to Android 4293443765 is called "color". The color property can be set on classes, ids or directly on the HTML element.

This example shows how text in the color `rgb(232, 192, 181)` looks like.

```
.text, #text, p{  
    color:rgb(232, 192, 181)  
}
```

If you want to add a text shadow in that color use the text-shadow property, you can generate a text shadow directly with our [CSS Text Shadow Generator](#).

Here you see how black text with a 4 pixel rgb(232, 192, 181) colored shadow looks like.

```
.shadow{ text-shadow: 4px 4px 2px rgb(232, 192, 181) }
```

## Border

The CSS property to change the border of an element to Android 4293443765 is called "border". The border property can be set on classes, ids or directly on the HTML element.

This example shows the color as border, it can be applied via the CSS property "border" or "border-color".

```
.border, #border, table{ border:4px solid rgb(232, 192, 181) }
```

If only the border color should be changed use the property `border-color`.

```
.border{ border-color:rgb(232, 192, 181) }
```

If you want to add a box shadow in that color use:

Here you see how a box with a 4 pixel `rgb(232, 192, 181)` colored shadow looks like.

```
.boxshadow{ -moz-box-shadow:4px 4px 4px  
4px rgb(232, 192, 181); -webkit-box-  
shadow:4px 4px 4px 4px rgb(232, 192, 181);  
box-shadow:4px 4px 4px 4px rgb(232, 192,  
181) }
```

# Background

The CSS property to change the background color of an element to Android 4293443765 is called "background". The background property can be set on classes, ids or directly on the HTML element.

```
.background, #background, body{  
background: rgb(232, 192, 181) }
```

If only the background color should be changed can be used:

```
.background{ background-color: rgb(232,  
192, 181) }
```

This example shows the color as background, it is applied via the CSS property "background".

To optimize and compress your CSS code, you can use our [online CSS compressor and optimizer](#) based on csstidy. If you want to create a linear or radial gradient as background or border, check our [CSS Gradient Generator](#).



Hey! You found this booklet interesting? Support Converting Colors with the new Membership Option!

The pro membership hides all ads, plus gives you double the colors in the color bucket, and more awesome pro features!

**[Learn more, Memberships starting at \\$2.50/m!](#)**

**Follow me  
on Twitter!**

@ConvertingColor