

# Converting Colors

Android(4293446871)

Have a look what the booklet for  
Android(4293446871) contains.

<b>Android(4293446871)</b> .....	3
<b><i>Conversions</i></b> .....	4
<b><i>Details</i></b> .....	6
<b><i>Harmonies</i></b> .....	11
<b><i>Previews</i></b> .....	23
<b><i>Color Blindness Simulation</i></b> .....	26
<b><i>CSS Examples</i></b> .....	29

# **Color**

**Android(4293446871)**

# Conversions

## Conversions Part 1

<b>Format</b>	<b>Color</b>
Hex	E8CCD7
RGB	232, 204, 215
RGB Percent	91%, 80%, 84%
CMY	0.0902, 0.2000, 0.1569
CMYK	0.00, 0.12, 0.07, 0.09
HSL	336°, 38%, 85%
HSV	336°, 12%, 91%
XYZ	67.1373, 65.2478, 73.3456
YIQ	213.6260, 13.1570, 9.3570

# Conversions

## Conversions Part 2

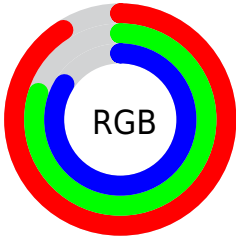
Format	Color
R <sub>Y</sub> B	232, 204, 215
Decimal	15256791
CIE Lab	84.61, 11.62, -1.85
CIE LCh	85, 11.770, 350.939
Yxy	65.2478, 0.3263, 0.3172
Android (android.graphics.Color)	4293446871 (0xFFE8CCD7)
YUV	213.6260, 0.6774, 16.1140
Hunter-Lab	80.7761, 7.0026, 2.7074

# Details

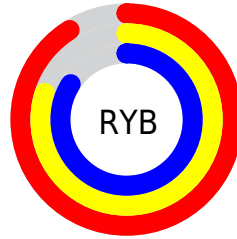
The Android color `4293446871` is a light color, and the websafe version is hex `FFCCCC`, and the color name is `queen pink`. A complement of this color would be `4291619037`, and the grayscale version is `4292269782`.

A 20% lighter version of the original color is `4294967295`, and `4289762976` is the 20% darker color. If you saturate the color by 10%, you get `4293440969`, and if you desaturate by 10%, it is `4293452773`.

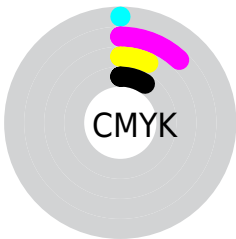
# Distribution



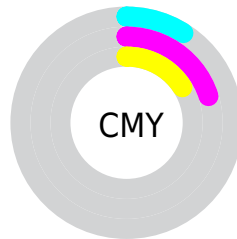
- Red (91%)
- Green (80%)
- Blue (84%)



- Red (91%)
- Yellow (80%)
- Blue (84%)



- Cyan (0%)
- Magenta (12%)
- Yellow (7%)
- Black (9%)



- Cyan (9%)
- Magenta (20%)
- Yellow (16%)

# Brightness & Saturation Gradients

These gradients show how the Android color 4293446871 changes by changing the brightness by 10 percent. The first figure shows a shift by +10% for each color and the second figure -10%.

Similar to the brightness gradients but the following saturation gradients show a change of the Android color 4293446871 by changing the saturation by 10% instead.



 4293446871

 4293446871

4294967295

 4291604923

 4289762976

 4287986822

 4286276461

 4284631893

 4283053117

 4281540392

 4280223763

 4278190080

 4293446871

 4293446871

 4293440969

 4293452773

 4293435067

 4293458675

 4293428909

 4293459967

 4293423007

 4293417105

 4293411202

 4293405300

 4293399142

 4293394523

# Harmonies

## Analogous

The Analogous color harmony consists of three colors that are next to each other on the color wheel.



4292857569



4293446871



4293643468

# Triad

The Triadic color harmony groups three colors that are evenly spaced from another and form a triangle on the color wheel.



4293446871



4292138430



4290435300

# Complementary

The Complementary color scheme is a pair of colors which are on the opposite of each other on the color wheel.



4293446871



4291619037

# Split Complementary

Split-complementary colors differ from the complementary color scheme. The scheme consists of three colors, the original color and two neighbors of the complement color.



4290304731



4293446871



4291287237

# Square

The Square scheme is like the rectangle color scheme, but the four colors are evenly spaced on the color wheel.



4293446871



4292923837



4290632399



4291089897

# Rectangle

The Rectangle color scheme consists of four colors that form a rectangle on the color wheel.



4293446871



4293578181



4290632399



4290304481



# Sweetspot

The Sweet Spot groups the original color and five complimentary colors.



4293446871



4294964729



4292725992



4286609788



4278190080



4286611584



# Same Dimension

The Same Dimension uses a secret algorithm to generate beautiful new colors.



4293446871



4294958057



4293447628



4285753196



4289921094



4281532436



# Inverse Universe

The Inverse Universe completely reimagines the original color for something new.



4293446871



4294958057



4291618280



4285753196



4289921094



4281532436



# Previews

## White Background



This preview shows how the Android color 4293446871 looks on a white background.

## Color Contrast Check

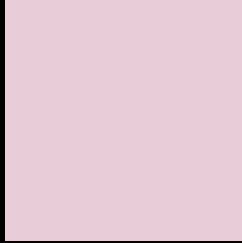
Large Text (above 18pt) WCAG AA × Fail

Any Text WCAG AA × Fail

Large Text (above 18pt) WCAG AAA × Fail

Any Text WCAG AAA × Fail

# Black Background



This preview shows how the Android color 4293446871 looks on a black background.

## Color Contrast Check

Large Text (above 18pt) WCAG AA ✓ Pass

Any Text WCAG AA ✓ Pass

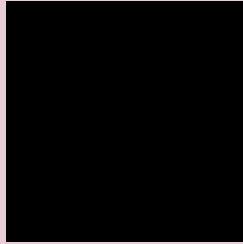
Large Text (above 18pt) WCAG AAA ✓ Pass

Any Text WCAG AAA ✓ Pass

If you want to check with other color combinations, try the [Color Contrast Checker](#).



# Android 4293446871 Background



This preview shows how black text looks on a background with the Android color 4293446871.



This preview shows how white text looks on a background with the Android color 4293446871.

# Color Blindness Simulation

Color vision deficiency is a very complex topic, and I could not describe the different causes any better than Wikipedia does, so if you want to learn more, you should check out their [article about color blindness](#).


## Dichromacy



**Original Color**  
4293446871

**Protanopia**  
4292203227

**Deuteranopia**  
4293316055



**Tritanopia**  
4293512155

# Trichromacy



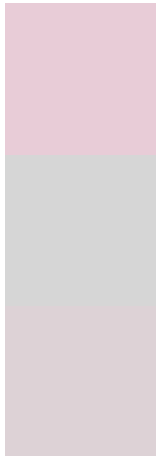
**Original Color**  
4293446871

**Protanomaly**  
4292661466

**Deuteranomaly**  
4293381591

**Tritanomaly**  
4293512154

# Monochromacy



**Original Color**  
4293446871

**Achromatopsia**  
4292269782

**Achromatomaly**  
4292727510

# CSS Examples

## Text

The CSS property to change the color of the text to Android 4293446871 is called "color". The color property can be set on classes, ids or directly on the HTML element.

This example shows how text in the color `rgb(232, 204, 215)` looks like.

```
.text, #text, p{  
    color:rgb(232, 204, 215)  
}
```

If you want to add a text shadow in that color use the text-shadow property, you can generate a text shadow directly with our [CSS Text Shadow Generator](#).

Here you see how black text with a 4 pixel rgb(232, 204, 215) colored shadow looks like.

```
.shadow{ text-shadow: 4px 4px 2px rgb(232, 204, 215) }
```

## Border

The CSS property to change the border of an element to Android 4293446871 is called "border". The border property can be set on classes, ids or directly on the HTML element.

This example shows the color as border, it can be applied via the CSS property "border" or "border-color".

```
.border, #border, table{ border:4px solid rgb(232, 204, 215) }
```

If only the border color should be changed use the property `border-color`.

```
.border{ border-color:rgb(232, 204, 215) }
```

If you want to add a box shadow in that color use:

Here you see how a box with a 4 pixel `rgb(232, 204, 215)` colored shadow looks like.

```
.boxshadow{ -moz-box-shadow:4px 4px 4px  
4px rgb(232, 204, 215); -webkit-box-  
shadow:4px 4px 4px 4px rgb(232, 204, 215);  
box-shadow:4px 4px 4px 4px rgb(232, 204,  
215) }
```

# Background

The CSS property to change the background color of an element to Android 4293446871 is called "background". The background property can be set on classes, ids or directly on the HTML element.

```
.background, #background, body{  
background: rgb(232, 204, 215) }
```

If only the background color should be changed can be used:

```
.background{ background-color: rgb(232,  
204, 215) }
```

This example shows the color as background, it is applied via the CSS property "background".

To optimize and compress your CSS code, you can use our [online CSS compressor and optimizer](#) based on csstidy. If you want to create a linear or radial gradient as background or border, check our [CSS Gradient Generator](#).



Hey! You found this booklet interesting? Support Converting Colors with the new Membership Option!

The pro membership hides all ads, plus gives you double the colors in the color bucket, and more awesome pro features!

**[Learn more, Memberships starting at \\$2.50/m!](#)**

**Follow me  
on Twitter!**

@ConvertingColor