

Converting Colors

Android(4293447380)

Have a look what the booklet for
Android(4293447380) contains.

Android(4293447380)	3
<i>Conversions</i>	4
<i>Details</i>	6
<i>Harmonies</i>	11
<i>Previews</i>	23
<i>Color Blindness Simulation</i>	26
<i>CSS Examples</i>	29

Color

Android(4293447380)

Conversions

Conversions Part 1

Format	Color
Hex	E8CED4
RGB	232, 206, 212
RGB Percent	91%, 81%, 83%
CMY	0.0902, 0.1922, 0.1686
CMYK	0.00, 0.11, 0.09, 0.09
HSL	346°, 36%, 86%
HSV	346°, 11%, 91%
XYZ	67.2337, 66.0519, 71.4930
YIQ	214.4580, 13.5700, 7.3780

Conversions

Conversions Part 2

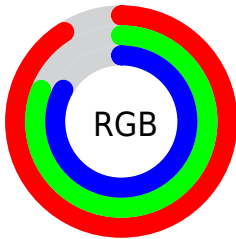
Format	Color
R _Y B	232, 206, 212
Decimal	15257300
CIE Lab	85.02, 10.06, 0.34
CIE LCh	85, 10.068, 1.962
Yxy	66.0519, 0.3283, 0.3226
Android (android.graphics.Color)	4293447380 (0xFFE8CED4)
YUV	214.4580, -1.2118, 15.3843
Hunter-Lab	81.2723, 5.4401, 4.7348

Details

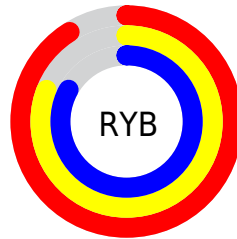
The Android color `4293447380` is a light color, and the websafe version is hex `FFCCCC`. A complement of this color would be `4291750114`, and the grayscale version is `4292269782`.

A 20% lighter version of the original color is `4294967295`, and `4289763485` is the 20% darker color. If you saturate the color by 10%, you get `4293441474`, and if you desaturate by 10%, it is `4293453286`.

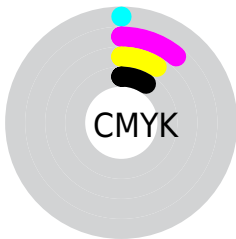
Distribution



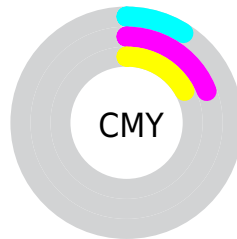
- Red (91%)
- Green (81%)
- Blue (83%)



- Red (91%)
- Yellow (81%)
- Blue (83%)



- Cyan (0%)
- Magenta (11%)
- Yellow (9%)
- Black (9%)



- Cyan (9%)
- Magenta (19%)
- Yellow (17%)

Brightness & Saturation Gradients

These gradients show how the Android color 4293447380 changes by changing the brightness by 10 percent. The first figure shows a shift by +10% for each color and the second figure -10%.

Similar to the brightness gradients but the following saturation gradients show a change of the Android color 4293447380 by changing the saturation by 10% instead.

 4293447380

 4293447380

4294967295

 4291605176


 4289763485

 4287987331

 4286276970

 4284632402

 4283053627

 4281540902

 4280224273

 4278190080

 4293447380

 4293447380

 4293441474

 4293453286

 4293435568

 4293459192

 4293429406

 4293459967

 4293423501

 4293417595

 4293411689

 4293405783

 4293399621

 4293394486

Harmonies

Analogous

The Analogous color harmony consists of three colors that are next to each other on the color wheel.



4293054429



4293447380



4293513163

Triad

The Triadic color harmony groups three colors that are evenly spaced from another and form a triangle on the color wheel.



4293447380



4291942340



4290959589

Complementary

The Complementary color scheme is a pair of colors which are on the opposite of each other on the color wheel.



4293447380



4291750114

Split Complementary

Split-complementary colors differ from the complementary color scheme. The scheme consists of three colors, the original color and two neighbors of the complement color.



4290632414



4293447380



4291221963

Square

The Square scheme is like the rectangle color scheme, but the four colors are evenly spaced on the color wheel.



4293447380



4292662465



4290763477



4291548647

Rectangle

The Rectangle color scheme consists of four colors that form a rectangle on the color wheel.



4293447380



4293382342



4290763477



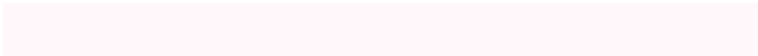
4290763235

Sweetspot

The Sweet Spot groups the original color and five complimentary colors.



4293447380



4294965241



4293054184



4286610044



4278190080



4286611584

Same Dimension

The Same Dimension uses a secret algorithm to generate beautiful new colors.



4293447380



4294958822



4293449166



4285753194



4289921065



4281532428

Inverse Universe

The Inverse Universe completely reimagines the original color for something new.



4293447380



4294958821



4291748328



4285753194



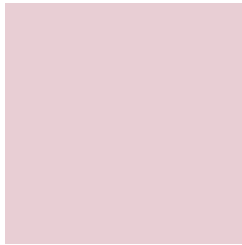
4289921065



4281532428

Previews

White Background



This preview shows how the Android color 4293447380 looks on a white background.

Color Contrast Check

Large Text (above 18pt) WCAG AA × Fail

Any Text WCAG AA × Fail

Large Text (above 18pt) WCAG AAA × Fail

Any Text WCAG AAA × Fail

Black Background



This preview shows how the Android color 4293447380 looks on a black background.

Color Contrast Check

Large Text (above 18pt) WCAG AA ✓ Pass

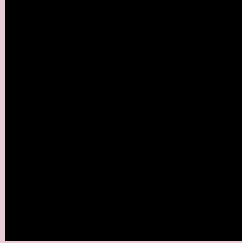
Any Text WCAG AA ✓ Pass

Large Text (above 18pt) WCAG AAA ✓ Pass

Any Text WCAG AAA ✓ Pass

If you want to check with other color combinations, try the [Color Contrast Checker](#).

Android 4293447380 Background



This preview shows how black text looks on a background with the Android color 4293447380.

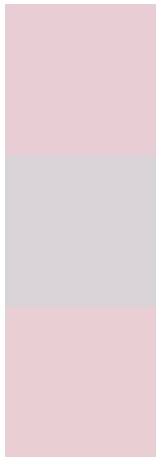


This preview shows how white text looks on a background with the Android color 4293447380.

Color Blindness Simulation

Color vision deficiency is a very complex topic, and I could not describe the different causes any better than Wikipedia does, so if you want to learn more, you should check out their [article about color blindness](#).

Dichromacy



Original Color
4293447380

Protanopia
4292334551

Deuteranopia
4293512916



Tritanopia
4293512669

Trichromacy



Original Color
4293447380

Protanomaly
4292727254

Deuteranomaly
4293512916

Tritanomaly
4293512666

Monochromacy



Original Color
4293447380

Achromatopsia
4292269782

Achromatomaly
4292727765

CSS Examples

Text

The CSS property to change the color of the text to Android 4293447380 is called "color". The color property can be set on classes, ids or directly on the HTML element.

This example shows how text in the color `rgb(232, 206, 212)` looks like.

```
.text, #text, p{  
    color:rgb(232, 206, 212)  
}
```

If you want to add a text shadow in that color use the text-shadow property, you can generate a text shadow directly with our [CSS Text Shadow Generator](#).

Here you see how black text with a 4 pixel rgb(232, 206, 212) colored shadow looks like.

```
.shadow{ text-shadow: 4px 4px 2px rgb(232, 206, 212) }
```

Border

The CSS property to change the border of an element to Android 4293447380 is called "border". The border property can be set on classes, ids or directly on the HTML element.

This example shows the color as border, it can be applied via the CSS property "border" or "border-color".

```
.border, #border, table{ border:4px solid rgb(232, 206, 212) }
```

If only the border color should be changed use the property `border-color`.

```
.border{ border-color:rgb(232, 206, 212) }
```

If you want to add a box shadow in that color use:

Here you see how a box with a 4 pixel `rgb(232, 206, 212)` colored shadow looks like.

```
.boxshadow{ -moz-box-shadow:4px 4px 4px 4px rgb(232, 206, 212); -webkit-box-shadow:4px 4px 4px 4px rgb(232, 206, 212); box-shadow:4px 4px 4px 4px rgb(232, 206, 212) }
```

Background

The CSS property to change the background color of an element to Android 4293447380 is called "background". The background property can be set on classes, ids or directly on the HTML element.

```
.background, #background, body{  
background: rgb(232, 206, 212) }
```

If only the background color should be changed can be used:

```
.background{ background-color: rgb(232,  
206, 212) }
```

This example shows the color as background, it is applied via the CSS property "background".

To optimize and compress your CSS code, you can use our [online CSS compressor and optimizer](#) based on csstidy. If you want to create a linear or radial gradient as background or border, check our [CSS Gradient Generator](#).

Hey! You found this booklet interesting? Support Converting Colors with the new Membership Option!

The pro membership hides all ads, plus gives you double the colors in the color bucket, and more awesome pro features!

[Learn more, Memberships starting at \\$2.50/m!](#)

**Follow me
on Twitter!**

@ConvertingColor