

Converting Colors

Android(4293447631)

Have a look what the booklet for
Android(4293447631) contains.

Android(4293447631)	3
<i>Conversions</i>	4
<i>Details</i>	6
<i>Harmonies</i>	11
<i>Previews</i>	23
<i>Color Blindness Simulation</i>	26
<i>CSS Examples</i>	29

Color

Android(4293447631)

Conversions

Conversions Part 1

Format	Color
Hex	E8CFCF
RGB	232, 207, 207
RGB Percent	91%, 81%, 81%
CMY	0.0902, 0.1882, 0.1882
CMYK	0.00, 0.11, 0.11, 0.09
HSL	0°, 35%, 86%
HSV	0°, 11%, 91%
XYZ	66.8540, 66.2864, 68.3025
YIQ	214.4750, 14.9000, 5.3000

Conversions

Conversions Part 2

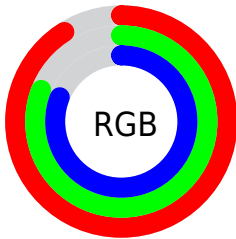
Format	Color
R _Y B	232, 207, 207
Decimal	15257551
CIE Lab	85.14, 8.71, 3.18
CIE LCh	85, 9.268, 20.041
Yxy	66.2864, 0.3319, 0.3291
Android (android.graphics.Color)	4293447631 (0xFFE8CFCF)
YUV	214.4750, -3.6852, 15.3694
Hunter-Lab	81.4165, 4.0939, 7.2516

Details

The Android color `4293447631` is a light color, and the websafe version is hex `CCCCCC`. A complement of this color would be `4291815656`, and the grayscale version is `4292335575`.

A 20% lighter version of the original color is `4294967295`, and `4289763737` is the 20% darker color. If you saturate the color by 10%, you get `4293441720`, and if you desaturate by 10%, it is `4293453542`.

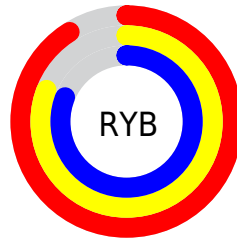
Distribution



Red (91%)

Green (81%)

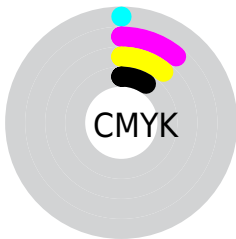
Blue (81%)



Red (91%)

Yellow (81%)

Blue (81%)

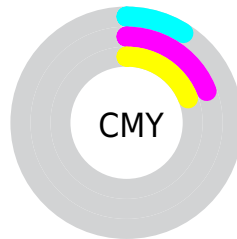


Cyan (0%)

Magenta (11%)

Yellow (11%)

Black (9%)



Cyan (9%)

Magenta (19%)

Yellow (19%)

Brightness & Saturation Gradients

These gradients show how the Android color 4293447631 changes by changing the brightness by 10 percent. The first figure shows a shift by +10% for each color and the second figure -10%.

Similar to the brightness gradients but the following saturation gradients show a change of the Android color 4293447631 by changing the saturation by 10% instead.

 4293447631

 4293447631

4294967295

 4291605427

 4289763737

 4287987583

 4286277222

 4284632654

 4283053879

 4281540898

 4280224779

 4278190080

 4293447631

 4293447631

 4293441720

 4293453542

 4293435809

 4293459453

 4293429641

 4293459967

 4293423730

 4293417819

 4293411908

 4293405997

 4293399829

 4293394432

Harmonies

Analogous

The Analogous color harmony consists of three colors that are next to each other on the color wheel.



4293251032



4293447631



4293316808

Triad

The Triadic color harmony groups three colors that are evenly spaced from another and form a triangle on the color wheel.



4293447631



4291549385



4291417830

Complementary

The Complementary color scheme is a pair of colors which are on the opposite of each other on the color wheel.



4293447631



4291815656

Split Complementary

Split-complementary colors differ from the complementary color scheme. The scheme consists of three colors, the original color and two neighbors of the complement color.



4290894306



4293447631



4291025617

Square

The Square scheme is like the rectangle color scheme, but the four colors are evenly spaced on the color wheel.



4293447631



4292269764



4290763482



4292072421

Rectangle

The Rectangle color scheme consists of four colors that form a rectangle on the color wheel.



4293447631



4293055172



4290763482



4291221477

Sweetspot

The Sweet Spot groups the original color and five complimentary colors.



4293447631



4294965239



4293447656



4286610042



4278190080



4286611584

Same Dimension

The Same Dimension uses a secret algorithm to generate beautiful new colors.



4293447631



4294958814



4293450703



4285753191



4289921024



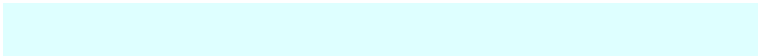
4281532416

Inverse Universe

The Inverse Universe completely reimagines the original color for something new.



4291815656



4292804607



4291812328



4284969843



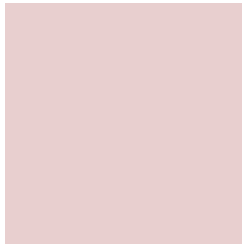
4278236083



4278203187

Previews

White Background



This preview shows how the Android color 4293447631 looks on a white background.

Color Contrast Check

Large Text (above 18pt) WCAG AA × Fail

Any Text WCAG AA × Fail

Large Text (above 18pt) WCAG AAA × Fail

Any Text WCAG AAA × Fail

Black Background



This preview shows how the Android color 4293447631 looks on a black background.

Color Contrast Check

Large Text (above 18pt) WCAG AA ✓ Pass

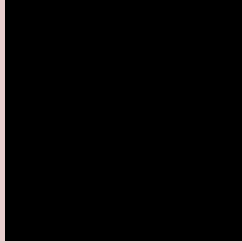
Any Text WCAG AA ✓ Pass

Large Text (above 18pt) WCAG AAA ✓ Pass

Any Text WCAG AAA ✓ Pass

If you want to check with other color combinations, try the [Color Contrast Checker](#).

Android 4293447631 Background



This preview shows how black text looks on a background with the Android color 4293447631.



This preview shows how white text looks on a background with the Android color 4293447631.

Color Blindness Simulation

Color vision deficiency is a very complex topic, and I could not describe the different causes any better than Wikipedia does, so if you want to learn more, you should check out their [article about color blindness](#).


Dichromacy



Original Color
4293447631

Protanopia
4292465874

Deuteranopia
4293643983



Tritanopia
4293578205

Trichromacy



Original Color
4293447631

Protanomaly
4292793041

Deuteranomaly
4293578447

Tritanomaly
4293512920

Monochromacy



Original Color
4293447631

Achromatopsia
4292269782

Achromatomaly
4292727763

CSS Examples

Text

The CSS property to change the color of the text to Android 4293447631 is called "color". The color property can be set on classes, ids or directly on the HTML element.

This example shows how text in the color `rgb(232, 207, 207)` looks like.

```
.text, #text, p{  
    color:rgb(232, 207, 207)  
}
```

If you want to add a text shadow in that color use the text-shadow property, you can generate a text shadow directly with our [CSS Text Shadow Generator](#).

Here you see how black text with a 4 pixel rgb(232, 207, 207) colored shadow looks like.

```
.shadow{ text-shadow: 4px 4px 2px rgb(232, 207, 207) }
```

Border

The CSS property to change the border of an element to Android 4293447631 is called "border". The border property can be set on classes, ids or directly on the HTML element.

This example shows the color as border, it can be applied via the CSS property "border" or "border-color".

```
.border, #border, table{ border:4px solid rgb(232, 207, 207) }
```

If only the border color should be changed use the property `border-color`.

```
.border{ border-color:rgb(232, 207, 207) }
```

If you want to add a box shadow in that color use:

Here you see how a box with a 4 pixel `rgb(232, 207, 207)` colored shadow looks like.

```
.boxshadow{ -moz-box-shadow:4px 4px 4px  
4px rgb(232, 207, 207); -webkit-box-  
shadow:4px 4px 4px 4px rgb(232, 207, 207);  
box-shadow:4px 4px 4px 4px rgb(232, 207,  
207) }
```

Background

The CSS property to change the background color of an element to Android 4293447631 is called "background". The background property can be set on classes, ids or directly on the HTML element.

```
.background, #background, body{  
background: rgb(232, 207, 207) }
```

If only the background color should be changed can be used:

```
.background{ background-color: rgb(232,  
207, 207) }
```

This example shows the color as background, it is applied via the CSS property "background".

To optimize and compress your CSS code, you can use our [online CSS compressor and optimizer](#) based on csstidy. If you want to create a linear or radial gradient as background or border, check our [CSS Gradient Generator](#).

Hey! You found this booklet interesting? Support Converting Colors with the new Membership Option!

The pro membership hides all ads, plus gives you double the colors in the color bucket, and more awesome pro features!

[Learn more, Memberships starting at \\$2.50/m!](#)

**Follow me
on Twitter!**

@ConvertingColor