

# Converting Colors

Android(4293447634)

Have a look what the booklet for  
Android(4293447634) contains.

<b>Android(4293447634)</b> .....	3
<b><i>Conversions</i></b> .....	4
<b><i>Details</i></b> .....	6
<b><i>Harmonies</i></b> .....	11
<b><i>Previews</i></b> .....	23
<b><i>Color Blindness Simulation</i></b> .....	26
<b><i>CSS Examples</i></b> .....	29

# **Color**

**Android(4293447634)**

# Conversions

## Conversions Part 1

Format	Color
Hex	E8CFD2
RGB	232, 207, 210
RGB Percent	91%, 81%, 82%
CMY	0.0902, 0.1882, 0.1765
CMYK	0.00, 0.11, 0.09, 0.09
HSL	353°, 35%, 86%
HSV	353°, 11%, 91%
XYZ	67.2244, 66.4346, 70.2528
YIQ	214.8170, 13.9370, 6.2330

# Conversions

## Conversions Part 2

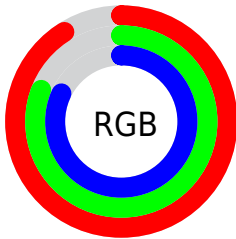
Format	Color
R <sub>Y</sub> B	232, 207, 210
Decimal	15257554
CIE Lab	85.22, 9.20, 1.69
CIE LCh	85, 9.356, 10.416
Yxy	66.4346, 0.3297, 0.3258
Android (android.graphics.Color)	4293447634 (0xFFE8CFD2)
YUV	214.8170, -2.3748, 15.0695
Hunter-Lab	81.5074, 4.5824, 5.9520

# Details

The Android color `4293447634` is a light color, and the websafe version is hex `CCCCCC`. A complement of this color would be `4291815653`, and the grayscale version is `4292335575`.

A 20% lighter version of the original color is `4294967295`, and `4289763740` is the 20% darker color. If you saturate the color by 10%, you get `4293441726`, and if you desaturate by 10%, it is `4293453542`.

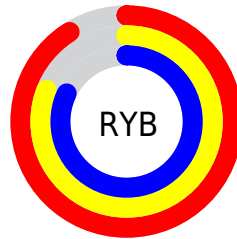
# Distribution



Red (91%)

Green (81%)

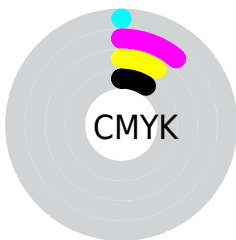
Blue (82%)



Red (91%)

Yellow (81%)

Blue (82%)

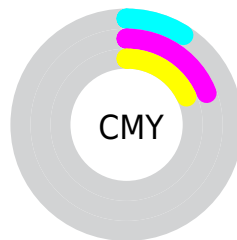


Cyan (0%)

Magenta (11%)

Yellow (9%)

Black (9%)



Cyan (9%)

Magenta (19%)

Yellow (18%)

# Brightness & Saturation Gradients

These gradients show how the Android color 4293447634 changes by changing the brightness by 10 percent. The first figure shows a shift by +10% for each color and the second figure -10%.

Similar to the brightness gradients but the following saturation gradients show a change of the Android color 4293447634 by changing the saturation by 10% instead.



 4293447634

 4293447634

4294967295

 4291605430


 4289763740

 4287987586

 4286277224

 4284632656

 4283053882

 4281540900

 4280224783

 4278190080

 4293447634

 4293447634

 4293441726

 4293453542

 4293435817

 4293459451

 4293429653

 4293459967

 4293423744

 4293417836

 4293411928

 4293406019

 4293399855

 4293394460

# Harmonies

## Analogous

The Analogous color harmony consists of three colors that are next to each other on the color wheel.



4293120219



4293447634



4293382346

# Triad

The Triadic color harmony groups three colors that are evenly spaced from another and form a triangle on the color wheel.



4293447634



4291811527



4291221477

# Complementary

The Complementary color scheme is a pair of colors which are on the opposite of each other on the color wheel.



4293447634



4291815653

# Split Complementary

Split-complementary colors differ from the complementary color scheme. The scheme consists of three colors, the original color and two neighbors of the complement color.



4290828768



4293447634



4291222223

# Square

The Square scheme is like the rectangle color scheme, but the four colors are evenly spaced on the color wheel.



4293447634



4292466116



4290829016



4291876326

# Rectangle

The Rectangle color scheme consists of four colors that form a rectangle on the color wheel.



4293447634



4293185990



4290829016



4291025124



# Sweetspot

The Sweet Spot groups the original color and five complimentary colors.



4293447634



4294965240



4293251048



4286610043



4278190080



4286611584



# Same Dimension

The Same Dimension uses a secret algorithm to generate beautiful new colors.



4293447634



4294958818



4293449935



4285753193



4289921045



4281532422



# Inverse Universe

The Inverse Universe completely reimagines the original color for something new.



4293447634



4294958818



4291813352



4285753193



4289921045

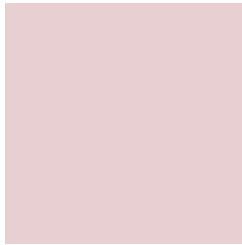


4281532422



# Previews

## White Background



This preview shows how the Android color 4293447634 looks on a white background.

## Color Contrast Check

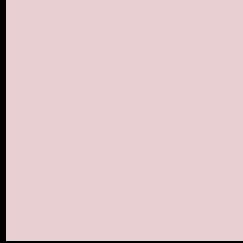
Large Text (above 18pt) WCAG AA × Fail

Any Text WCAG AA × Fail

Large Text (above 18pt) WCAG AAA × Fail

Any Text WCAG AAA × Fail

# Black Background



This preview shows how the Android color 4293447634 looks on a black background.

## Color Contrast Check

Large Text (above 18pt) WCAG AA ✓ Pass

Any Text WCAG AA ✓ Pass

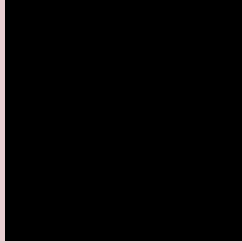
Large Text (above 18pt) WCAG AAA ✓ Pass

Any Text WCAG AAA ✓ Pass

If you want to check with other color combinations, try the [Color Contrast Checker](#).



# Android 4293447634 Background



This preview shows how black text looks on a background with the Android color 4293447634.




This preview shows how white text looks on a background with the Android color 4293447634.

# Color Blindness Simulation

Color vision deficiency is a very complex topic, and I could not describe the different causes any better than Wikipedia does, so if you want to learn more, you should check out their [article about color blindness](#).

## Dichromacy

	<b>Original Color</b> 4293447634
	<b>Protanopia</b> 4292465877
	<b>Deuteranopia</b> 4293578450



**Tritanopia**  
4293578205

# Trichromacy



**Original Color**  
4293447634

**Protanomaly**  
4292793044

**Deuteranomaly**  
4293512914

**Tritanomaly**  
4293512921

# Monochromacy



**Original Color**  
4293447634

**Achromatopsia**  
4292335575

**Achromatomaly**  
4292728021

# CSS Examples

## Text

The CSS property to change the color of the text to Android 4293447634 is called "color". The color property can be set on classes, ids or directly on the HTML element.

This example shows how text in the color `rgb(232, 207, 210)` looks like.

```
.text, #text, p{  
    color:rgb(232, 207, 210)  
}
```

If you want to add a text shadow in that color use the text-shadow property, you can generate a text shadow directly with our [CSS Text Shadow Generator](#).

Here you see how black text with a 4 pixel rgb(232, 207, 210) colored shadow looks like.

```
.shadow{ text-shadow: 4px 4px 2px rgb(232, 207, 210) }
```

## Border

The CSS property to change the border of an element to Android 4293447634 is called "border". The border property can be set on classes, ids or directly on the HTML element.

This example shows the color as border, it can be applied via the CSS property "border" or "border-color".

```
.border, #border, table{ border:4px solid rgb(232, 207, 210) }
```

If only the border color should be changed use the property `border-color`.

```
.border{ border-color:rgb(232, 207, 210) }
```

If you want to add a box shadow in that color use:

Here you see how a box with a 4 pixel `rgb(232, 207, 210)` colored shadow looks like.

```
.boxshadow{ -moz-box-shadow:4px 4px 4px  
4px rgb(232, 207, 210); -webkit-box-  
shadow:4px 4px 4px 4px rgb(232, 207, 210);  
box-shadow:4px 4px 4px 4px rgb(232, 207,  
210) }
```

# Background

The CSS property to change the background color of an element to Android 4293447634 is called "background". The background property can be set on classes, ids or directly on the HTML element.

```
.background, #background, body{  
background: rgb(232, 207, 210) }
```

If only the background color should be changed can be used:

```
.background{ background-color: rgb(232,  
207, 210) }
```

This example shows the color as background, it is applied via the CSS property "background".

To optimize and compress your CSS code, you can use our [online CSS compressor and optimizer](#) based on csstidy. If you want to create a linear or radial gradient as background or border, check our [CSS Gradient Generator](#).



Hey! You found this booklet interesting? Support Converting Colors with the new Membership Option!

The pro membership hides all ads, plus gives you double the colors in the color bucket, and more awesome pro features!

**[Learn more, Memberships starting at \\$2.50/m!](#)**

**Follow me  
on Twitter!**

@ConvertingColor