

# Converting Colors

Android(4293447871)

Have a look what the booklet for  
Android(4293447871) contains.

<b>Android(4293447871)</b> .....	3
<b><i>Conversions</i></b> .....	4
<b><i>Details</i></b> .....	6
<b><i>Harmonies</i></b> .....	11
<b><i>Previews</i></b> .....	23
<b><i>Color Blindness Simulation</i></b> .....	26
<b><i>CSS Examples</i></b> .....	29

# **Color**

**Android(4293447871)**

# Conversions

## Conversions Part 1

Format	Color
Hex	E8D0BF
RGB	232, 208, 191
RGB Percent	91%, 82%, 75%
CMY	0.0902, 0.1843, 0.2510
CMYK	0.00, 0.10, 0.18, 0.09
HSL	25°, 47%, 83%
HSV	25°, 18%, 91%
XYZ	65.2386, 66.0291, 58.5967
YIQ	213.2380, 19.7610, -0.1990

# Conversions

## Conversions Part 2

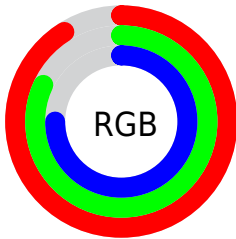
Format	Color
<a href="#">RYB</a>	<a href="#">232, 220, 191</a>
Decimal	<a href="#">15257791</a>
CIELab	<a href="#">85.01, 5.66, 11.48</a>
CIElCh	<a href="#">85, 12.797, 63.747</a>
Yxy	<a href="#">66.0291, 0.3436, 0.3478</a>
Android (android.graphics.Color)	<a href="#">4293447871</a> ( <a href="#">0xFFE8D0BF</a> )
YUV	<a href="#">213.2380, -10.9633, 16.4543</a>
Hunter-Lab	<a href="#">81.2583, 1.1074, 14.1259</a>

# Details

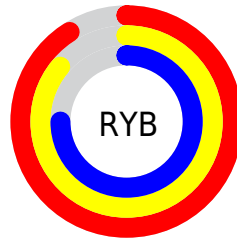
The Android color `4293447871` is a light color, and the websafe version is hex `CCCCCC`. A complement of this color would be `4290762728`, and the grayscale version is `4292203989`.

A 20% lighter version of the original color is `4294967287`, and `4289763978` is the 20% darker color. If you saturate the color by 10%, you get `4293444264`, and if you desaturate by 10%, it is `4293451478`.

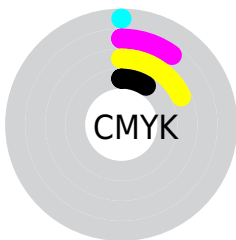
# Distribution



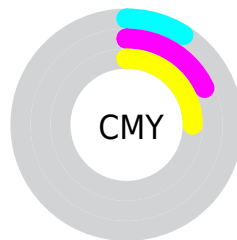
- Red (91%)
- Green (82%)
- Blue (75%)



- Red (91%)
- Yellow (86%)
- Blue (75%)



- Cyan (0%)
- Magenta (10%)
- Yellow (18%)
- Black (9%)



- Cyan (9%)
- Magenta (18%)
- Yellow (25%)

# Brightness & Saturation Gradients

These gradients show how the Android color 4293447871 changes by changing the brightness by 10 percent. The first figure shows a shift by +10% for each color and the second figure -10%.

Similar to the brightness gradients but the following saturation gradients show a change of the Android color 4293447871 by changing the saturation by 10% instead.



 4293447871

 4293447871

4294967295

 4291605668

 4294967287

 4289763978

 4287987824

 4286277464

 4284632896

 4283054122

 4281475606

 4280159488

 4278190080

 4293447871

 4293447871

 4293444264

 4293451478

 4293440913

 4293454829

 4293437305

 4293458431

 4293433954

 4293459967

 4293430347

 4293426996

 4293423389

 4293419781

 4293419008

# Harmonies

## Analogous

The Analogous color harmony consists of three colors that are next to each other on the color wheel.



4293840327



4293447871



4292727996

# Triad

The Triadic color harmony groups three colors that are evenly spaced from another and form a triangle on the color wheel.



4293447871



4290305237



4292465128

# Complementary

The Complementary color scheme is a pair of colors which are on the opposite of each other on the color wheel.



4293447871



4290762728

# Split Complementary

Split-complementary colors differ from the complementary color scheme. The scheme consists of three colors, the original color and two neighbors of the complement color.



4291417580



4293447871



4290173921

# Square

The Square scheme is like the rectangle color scheme, but the four colors are evenly spaced on the color wheel.



4293447871



4290960073



4290631914



4293316319

# Rectangle

The Rectangle color scheme consists of four colors that form a rectangle on the color wheel.



4293447871



4292138942



4290631914



4292137706



# Sweetspot

The Sweet Spot groups the original color and five complimentary colors.



4293447871



4294965490



4293443544



4286610296



4278190080



4286611584



# Same Dimension

The Same Dimension uses a secret algorithm to generate beautiful new colors.



4293447871



4294959305



4293452991



4285754471



4289939968



4281537792

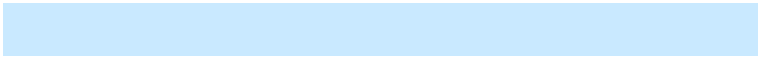


# Inverse Universe

The Inverse Universe completely reimagines the original color for something new.



4290762728



4291422719



4290757608



4284968563



4278216883

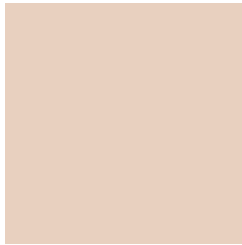


4278197811



# Previews

## White Background



This preview shows how the Android color 4293447871 looks on a white background.

## Color Contrast Check

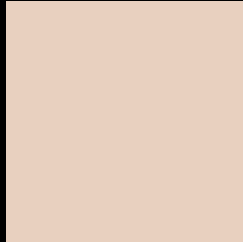
Large Text (above 18pt) WCAG AA × Fail

Any Text WCAG AA × Fail

Large Text (above 18pt) WCAG AAA × Fail

Any Text WCAG AAA × Fail

# Black Background



This preview shows how the Android color 4293447871 looks on a black background.

## Color Contrast Check

Large Text (above 18pt) WCAG AA ✓ Pass

Any Text WCAG AA ✓ Pass

Large Text (above 18pt) WCAG AAA ✓ Pass

Any Text WCAG AAA ✓ Pass

If you want to check with other color combinations, try the [Color Contrast Checker](#).



# Android 4293447871 Background



This preview shows how black text looks on a background with the Android color 4293447871.

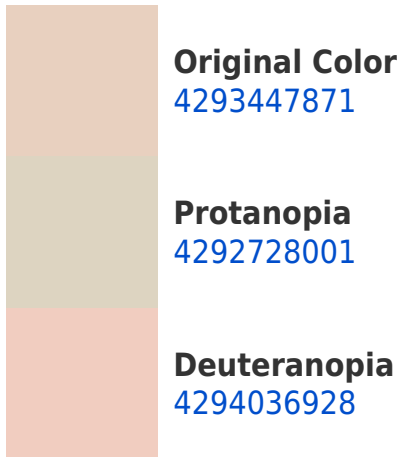


This preview shows how white text looks on a background with the Android color 4293447871.

# Color Blindness Simulation

Color vision deficiency is a very complex topic, and I could not describe the different causes any better than Wikipedia does, so if you want to learn more, you should check out their [article about color blindness](#).

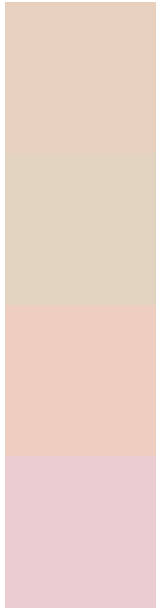
## Dichromacy





**Tritanopia**  
4293709020

# Trichromacy



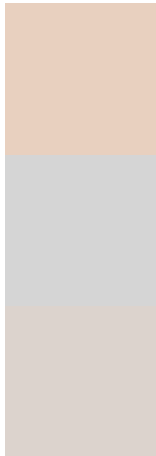
**Original Color**  
4293447871

**Protanomaly**  
4292989888

**Deuteranomaly**  
4293840576

**Tritanomaly**  
4293643729

# Monochromacy



**Original Color**  
4293447871

**Achromatopsia**  
4292203989

**Achromatomaly**  
4292662221

# CSS Examples

## Text

The CSS property to change the color of the text to Android 4293447871 is called "color". The color property can be set on classes, ids or directly on the HTML element.

This example shows how text in the color `rgb(232, 208, 191)` looks like.

```
.text, #text, p{  
    color:rgb(232, 208, 191)  
}
```

If you want to add a text shadow in that color use the text-shadow property, you can generate a text shadow directly with our [CSS Text Shadow Generator](#).

Here you see how black text with a 4 pixel rgb(232, 208, 191) colored shadow looks like.

```
.shadow{ text-shadow: 4px 4px 2px rgb(232, 208, 191) }
```

## Border

The CSS property to change the border of an element to Android 4293447871 is called "border". The border property can be set on classes, ids or directly on the HTML element.

This example shows the color as border, it can be applied via the CSS property "border" or "border-color".

```
.border, #border, table{ border:4px solid rgb(232, 208, 191) }
```

If only the border color should be changed use the property border-color.

```
.border{ border-color:rgb(232, 208, 191) }
```

If you want to add a box shadow in that color use:

Here you see how a box with a 4 pixel rgb(232, 208, 191) colored shadow looks like.

```
.boxshadow{ -moz-box-shadow:4px 4px 4px  
4px rgb(232, 208, 191); -webkit-box-  
shadow:4px 4px 4px 4px rgb(232, 208, 191);  
box-shadow:4px 4px 4px 4px rgb(232, 208,  
191) }
```

# Background

The CSS property to change the background color of an element to Android 4293447871 is called "background". The background property can be set on classes, ids or directly on the HTML element.

```
.background, #background, body{  
background: rgb(232, 208, 191) }
```

If only the background color should be changed can be used:

```
.background{ background-color: rgb(232,  
208, 191) }
```

This example shows the color as background, it is applied via the CSS property "background".

To optimize and compress your CSS code, you can use our [online CSS compressor and optimizer](#) based on csstidy. If you want to create a linear or radial gradient as background or border, check our [CSS Gradient Generator](#).



Hey! You found this booklet interesting? Support Converting Colors with the new Membership Option!

The pro membership hides all ads, plus gives you double the colors in the color bucket, and more awesome pro features!

**[Learn more, Memberships starting at \\$2.50/m!](#)**

**Follow me  
on Twitter!**

@ConvertingColor