

Converting Colors

Android(4293448145)

Have a look what the booklet for
Android(4293448145) contains.

Android(4293448145)	3
<i>Conversions</i>	4
<i>Details</i>	6
<i>Harmonies</i>	11
<i>Previews</i>	23
<i>Color Blindness Simulation</i>	26
<i>CSS Examples</i>	29

Color

Android(4293448145)

Conversions

Conversions Part 1

Format	Color
Hex	E8D1D1
RGB	232, 209, 209
RGB Percent	91%, 82%, 82%
CMY	0.0902, 0.1804, 0.1804
CMYK	0.00, 0.10, 0.10, 0.09
HSL	0°, 33%, 86%
HSV	0°, 10%, 91%
XYZ	67.5878, 67.3602, 69.7612
YIQ	215.8770, 13.7080, 4.8760

Conversions

Conversions Part 2

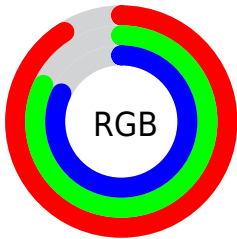
Format	Color
R _Y B	232, 209, 209
Decimal	15258065
CIE Lab	85.69, 7.99, 2.90
CIE LCh	86, 8.497, 19.972
Yxy	67.3602, 0.3302, 0.3291
Android (android.graphics.Color)	4293448145 (0xFFE8D1D1)
YUV	215.8770, -3.3904, 14.1399
Hunter-Lab	82.0732, 3.3676, 7.0556

Details

The Android color `4293448145` is a light color, and the websafe version is hex `CCCCCC`. A complement of this color would be `4291946728`, and the grayscale version is `4292401368`.

A 20% lighter version of the original color is `4294967295`, and `4289764251` is the 20% darker color. If you saturate the color by 10%, you get `4293442234`, and if you desaturate by 10%, it is `4293454056`.

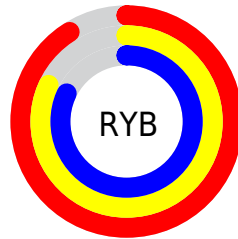
Distribution



Red (91%)

Green (82%)

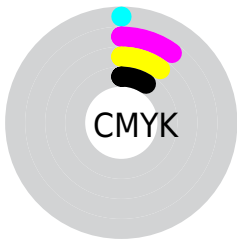
Blue (82%)



Red (91%)

Yellow (82%)

Blue (82%)

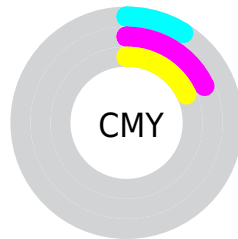


Cyan (0%)

Magenta (10%)

Yellow (10%)

Black (9%)



Cyan (9%)

Magenta (18%)

Yellow (18%)

Brightness & Saturation Gradients

These gradients show how the Android color 4293448145 changes by changing the brightness by 10 percent. The first figure shows a shift by +10% for each color and the second figure -10%.

Similar to the brightness gradients but the following saturation gradients show a change of the Android color 4293448145 by changing the saturation by 10% instead.

 4293448145

 4293448145

4294967295

 4291605941

 4289764251

 4287988097

 4286343016

 4284632912

 4283054137

 4281606947

 4280225294

 4278190080

 4293448145

 4293448145

 4293442234

 4293454056

 4293436323

 4293459967

 4293430155

 4293424244

 4293418333

 4293412422

 4293406511

 4293400343

 4293394432

Harmonies

Analogous

The Analogous color harmony consists of three colors that are next to each other on the color wheel.



4293251545



4293448145



4293317322

Triad

The Triadic color harmony groups three colors that are evenly spaced from another and form a triangle on the color wheel.



4293448145



4291746508



4291549414

Complementary

The Complementary color scheme is a pair of colors which are on the opposite of each other on the color wheel.



4293448145



4291946728

Split Complementary

Split-complementary colors differ from the complementary color scheme. The scheme consists of three colors, the original color and two neighbors of the complement color.



4291091170



4293448145



4291222483

Square

The Square scheme is like the rectangle color scheme, but the four colors are evenly spaced on the color wheel.



4293448145



4292335559



4291025883



4292204005

Rectangle

The Rectangle color scheme consists of four colors that form a rectangle on the color wheel.



4293448145



4293055687



4291025883



4291353061

Sweetspot

The Sweet Spot groups the original color and five complimentary colors.



4293448145



4294965239



4293448168



4286610042



4278190080



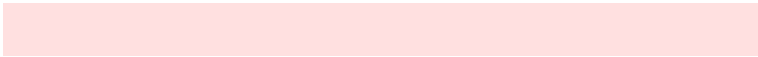
4286611584

Same Dimension

The Same Dimension uses a secret algorithm to generate beautiful new colors.



4293448145



4294959328



4293450961



4285753191



4289921024



4281532416

Inverse Universe

The Inverse Universe completely reimagines the original color for something new.



4291946728



4292935679



4291943656



4284969843



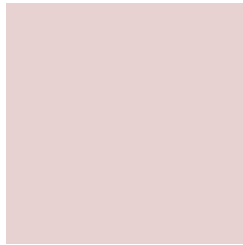
4278236083



4278203187

Previews

White Background



This preview shows how the Android color 4293448145 looks on a white background.

Color Contrast Check

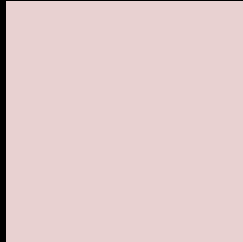
Large Text (above 18pt) WCAG AA × Fail

Any Text WCAG AA × Fail

Large Text (above 18pt) WCAG AAA × Fail

Any Text WCAG AAA × Fail

Black Background



This preview shows how the Android color 4293448145 looks on a black background.

Color Contrast Check

Large Text (above 18pt) WCAG AA ✓ Pass

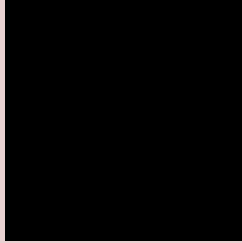
Any Text WCAG AA ✓ Pass

Large Text (above 18pt) WCAG AAA ✓ Pass

Any Text WCAG AAA ✓ Pass

If you want to check with other color combinations, try the [Color Contrast Checker](#).

Android 4293448145 Background



This preview shows how black text looks on a background with the Android color 4293448145.




This preview shows how white text looks on a background with the Android color 4293448145.

Color Blindness Simulation

Color vision deficiency is a very complex topic, and I could not describe the different causes any better than Wikipedia does, so if you want to learn more, you should check out their [article about color blindness](#).

Dichromacy

	Original Color 4293448145
	Protanopia 4292597203
	Deuteranopia 4293775313



Tritanopia
4293578719

Trichromacy



Original Color

4293448145

Protanomaly

4292924626

Deuteranomaly

4293644497

Tritanomaly

4293513434

Monochromacy



Original Color

4293448145

Achromatopsia

4292401368

Achromatomaly

4292793813

CSS Examples

Text

The CSS property to change the color of the text to Android 4293448145 is called "color". The color property can be set on classes, ids or directly on the HTML element.

This example shows how text in the color `rgb(232, 209, 209)` looks like.

```
.text, #text, p{  
    color:rgb(232, 209, 209)  
}
```

If you want to add a text shadow in that color use the text-shadow property, you can generate a text shadow directly with our [CSS Text Shadow Generator](#).

Here you see how black text with a 4 pixel rgb(232, 209, 209) colored shadow looks like.

```
.shadow{ text-shadow: 4px 4px 2px rgb(232, 209, 209) }
```

Border

The CSS property to change the border of an element to Android 4293448145 is called "border". The border property can be set on classes, ids or directly on the HTML element.

This example shows the color as border, it can be applied via the CSS property "border" or "border-color".

```
.border, #border, table{ border:4px solid rgb(232, 209, 209) }
```

If only the border color should be changed use the property `border-color`.

```
.border{ border-color:rgb(232, 209, 209) }
```

If you want to add a box shadow in that color use:

Here you see how a box with a 4 pixel `rgb(232, 209, 209)` colored shadow looks like.

```
.boxshadow{ -moz-box-shadow:4px 4px 4px  
4px rgb(232, 209, 209); -webkit-box-  
shadow:4px 4px 4px 4px rgb(232, 209, 209);  
box-shadow:4px 4px 4px 4px rgb(232, 209,  
209) }
```

Background

The CSS property to change the background color of an element to Android 4293448145 is called "background". The background property can be set on classes, ids or directly on the HTML element.

```
.background, #background, body{  
background: rgb(232, 209, 209) }
```

If only the background color should be changed can be used:

```
.background{ background-color: rgb(232,  
209, 209) }
```

This example shows the color as background, it is applied via the CSS property "background".

To optimize and compress your CSS code, you can use our [online CSS compressor and optimizer](#) based on csstidy. If you want to create a linear or radial gradient as background or border, check our [CSS Gradient Generator](#).

Hey! You found this booklet interesting? Support Converting Colors with the new Membership Option!

The pro membership hides all ads, plus gives you double the colors in the color bucket, and more awesome pro features!

[Learn more, Memberships starting at \\$2.50/m!](#)

**Follow me
on Twitter!**

@ConvertingColor