

Converting Colors

Android(4293469019)

Have a look what the booklet for
Android(4293469019) contains.

| | |
|--|----|
| Android(4293469019) | 3 |
| <i>Conversions</i> | 4 |
| <i>Details</i> | 6 |
| <i>Harmonies</i> | 11 |
| <i>Previews</i> | 23 |
| <i>Color Blindness Simulation</i> | 26 |
| <i>CSS Examples</i> | 29 |

Color

Android(4293469019)

Conversions

Conversions Part 1

| Format | Color |
|-------------|-----------------------------|
| Hex | E9235B |
| RGB | 233, 35, 91 |
| RGB Percent | 91%, 14%, 36% |
| CMY | 0.0863, 0.8627, 0.6431 |
| CMYK | 0.00, 0.85, 0.61, 0.09 |
| HSL | 343°, 82%, 53% |
| HSV | 343°, 85%, 91% |
| XYZ | 36.0936, 19.2810, 11.7168 |
| YIQ | 100.5860, 100.0320, 59.3920 |

Conversions

Conversions Part 2

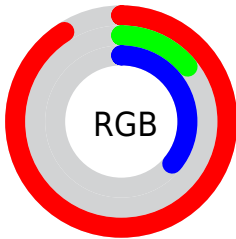
| Format | Color |
|-------------------------------------|--------------------------------|
| R_{YB} | 233, 35, 91 |
| Decimal | 15278939 |
| CIE _{Lab} | 51.01, 73.22, 20.41 |
| CIE _{LCh} | 51, 76.014, 15.578 |
| Yxy | 19.2810, 0.5380, 0.2874 |
| Android (android.graphics.Color) | 4293469019 (0xFFE9235B) |
| YUV | 100.5860, -4.7259, 116.1271 |
| Hunter-Lab | 43.9102, 69.8820, 14.9164 |

Details

The Android color **4293469019** is a dark color, and the websafe version is hex **FF3366**. The color can be described as dark washed red. A complement of this color would be **4280543665**, and the grayscale version is **4284835173**.

A 20% lighter version of the original color is **4294928781**, and **4289331246** is the 20% darker color. If you saturate the color by 10%, you get **4293463114**, and if you desaturate by 10%, it is **4293474924**.

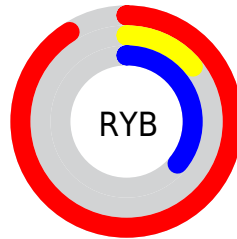
Distribution



Red (91%)

Green (14%)

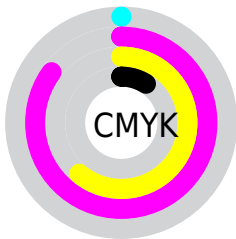
Blue (36%)



Red (91%)

Yellow (14%)

Blue (36%)

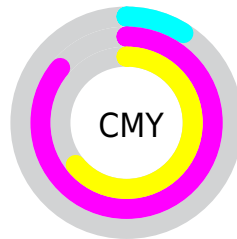


Cyan (0%)

Magenta (85%)

Yellow (61%)

Black (9%)



Cyan (9%)

Magenta (86%)

Yellow (64%)

Brightness & Saturation Gradients

These gradients show how the Android color 4293469019 changes by changing the brightness by 10 percent. The first figure shows a shift by +10% for each color and the second figure -10%.

Similar to the brightness gradients but the following saturation gradients show a change of the Android color 4293469019 by changing the saturation by 10% instead.



4293469019



4293469019

4294967295



4291362884



4294928781



4289331246



4294936487



4287234074



4294943938



4285267969



4294951646



4283301892



4294959354



4281204738

4294967039



4278190080



4293469019



4293469019



4293463114



4293474924

■ 4293460034

■ 4293481084

■ 4293486989

■ 4293492894

■ 4293499055

■ 4293504959

■ 4293510864

■ 4293516769

■ 4293522929

Harmonies

Analogous

The Analogous color harmony consists of three colors that are next to each other on the color wheel.



4292619164



4293469019



4292233755

Triad

The Triadic color harmony groups three colors that are evenly spaced from another and form a triangle on the color wheel.



4293469019



4279274755



4278225656

Complementary

The Complementary color scheme is a pair of colors which are on the opposite of each other on the color wheel.



4293469019



4280543665

Split Complementary

Split-complementary colors differ from the complementary color scheme. The scheme consists of three colors, the original color and two neighbors of the complement color.



4278227926



4293469019



4278227799

Square

The Square scheme is like the rectangle color scheme, but the four colors are evenly spaced on the color wheel.



4293469019



4285825280



4278228379



4278220536

Rectangle

The Rectangle color scheme consists of four colors that form a rectangle on the color wheel.



4293469019



4290601216



4278228379



4278226672

Sweetspot

The Sweet Spot groups the original color and five complimentary colors.



4293469019



4294950865



4289799145



4286601572



4278190080



4286611584

Same Dimension

The Same Dimension uses a secret algorithm to generate beautiful new colors.



4293469019



4294901832



4293479971



4285885037



4290052147



4281729039

Inverse Universe

The Inverse Universe completely reimagines the original color for something new.



4293469019



4294901832



4280532713



4285885037



4290052147



4281729039

Previews

White Background



This preview shows how the Android color 4293469019 looks on a white background.

Color Contrast Check

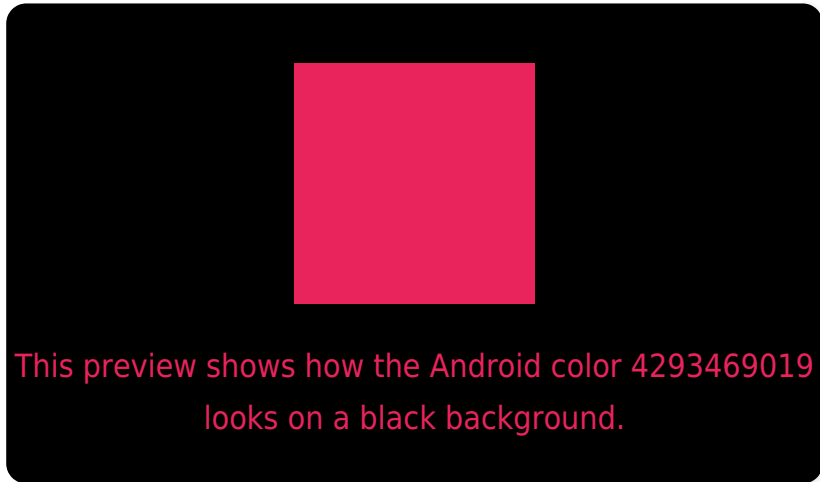
Large Text (above 18pt) WCAG AA ✓ Pass

Any Text WCAG AA ✗ Fail

Large Text (above 18pt) WCAG AAA ✗ Fail

Any Text WCAG AAA ✗ Fail

Black Background



Color Contrast Check

Large Text (above 18pt) WCAG AA ✓ Pass

Any Text WCAG AA ✓ Pass

Large Text (above 18pt) WCAG AAA ✓ Pass

Any Text WCAG AAA × Fail

If you want to check with other color combinations, try the [Color Contrast Checker](#).

Android 4293469019 Background



This preview shows how black text looks on a background with the Android color 4293469019.



This preview shows how white text looks on a background with the Android color 4293469019.

Color Blindness Simulation

Color vision deficiency is a very complex topic, and I could not describe the different causes any better than Wikipedia does, so if you want to learn more, you should check out their [article about color blindness](#).

Dichromacy

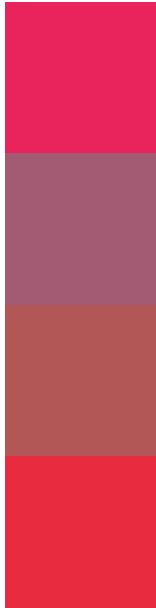


Original Color
4293469019

Protanopia
4286282112

Deuteranopia
4287853905

Trichromacy



Original Color
4293469019

Protanomaly
4288895603

Deuteranomaly
4289877845

Tritanomaly
4293405503

Monochromacy



Original Color
4293469019

Achromatopsia
4284835173

Achromatomaly
4287974753

CSS Examples

Text

The CSS property to change the color of the text to Android 4293469019 is called "color". The color property can be set on classes, ids or directly on the HTML element.

This example shows how text in the color `rgb(233, 35, 91)` looks like.

```
.text, #text, p{  
    color:rgb(233, 35, 91)  
}
```

If you want to add a text shadow in that color use the text-shadow property, you can generate a text shadow directly with our [CSS Text Shadow Generator](#).

Here you see how black text with a 4 pixel rgb(233, 35, 91) colored shadow looks like.

```
.shadow{ text-shadow: 4px 4px 2px rgb(233, 35, 91) }
```

Border

The CSS property to change the border of an element to Android 4293469019 is called "border". The border property can be set on classes, ids or directly on the HTML element.

This example shows the color as border, it can be applied via the CSS property "border" or "border-color".

```
.border, #border, table{ border:4px solid rgb(233, 35, 91) }
```

If only the border color should be changed use the property border-color.

```
.border{ border-color:rgb(233, 35, 91) }
```

If you want to add a box shadow in that color use:

Here you see how a box with a 4 pixel rgb(233, 35, 91) colored shadow looks like.

```
.boxshadow{ -moz-box-shadow:4px 4px 4px  
4px rgb(233, 35, 91); -webkit-box-  
shadow:4px 4px 4px 4px rgb(233, 35, 91);  
box-shadow:4px 4px 4px 4px rgb(233, 35,  
91) }
```

Background

The CSS property to change the background color of an element to Android 4293469019 is called "background". The background property can be set on classes, ids or directly on the HTML element.

```
.background, #background, body{  
background: rgb(233, 35, 91) }
```

If only the background color should be changed can be used:

```
.background{ background-color: rgb(233, 35,  
91) }
```

This example shows the color as background, it is applied via the CSS property "background".

To optimize and compress your CSS code, you can use our [online CSS compressor and optimizer](#) based on csstidy. If you want to create a linear or radial gradient as background or border, check our [CSS Gradient Generator](#).

Hey! You found this booklet interesting? Support Converting Colors with the new Membership Option!

The pro membership hides all ads, plus gives you double the colors in the color bucket, and more awesome pro features!

[Learn more, Memberships starting at \\$2.50/m!](#)

**Follow me
on Twitter!**

@ConvertingColor