

Converting Colors

Android(4293477743)

Have a look what the booklet for
Android(4293477743) contains.

Android(4293477743)	3
<i>Conversions</i>	4
<i>Details</i>	6
<i>Harmonies</i>	11
<i>Previews</i>	23
<i>Color Blindness Simulation</i>	26
<i>CSS Examples</i>	29

Color

Android(4293477743)

Conversions

Conversions Part 1

Format	Color
Hex	E9456F
RGB	233, 69, 111
RGB Percent	91%, 27%, 44%
CMY	0.0863, 0.7294, 0.5647
CMYK	0.00, 0.70, 0.52, 0.09
HSL	345°, 79%, 59%
HSV	345°, 70%, 91%
XYZ	38.6016, 22.7276, 17.3913
YIQ	122.8240, 84.2620, 47.8300

Conversions

Conversions Part 2

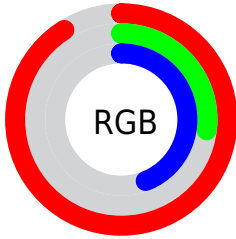
Format	Color
R_{YB}	233, 69, 111
Decimal	15287663
CIE _{Lab}	54.79, 65.14, 13.54
CIE _{LCh}	55, 66.536, 11.740
Yxy	22.7276, 0.4904, 0.2887
Android (android.graphics.Color)	4293477743 (0xFFE9456F)
YUV	122.8240, -5.8292, 96.6244
Hunter-Lab	47.6735, 61.1046, 11.7424

Details

The Android color **4293477743** is a dark color, and the websafe version is hex **CC3366**. The color can be described as middle muted rose. A complement of this color would be **4282771903**, and the grayscale version is **4286282619**.

A 20% lighter version of the original color is **4294934690**, and **4289396800** is the 20% darker color. If you saturate the color by 10%, you get **4293471838**, and if you desaturate by 10%, it is **4293483648**.

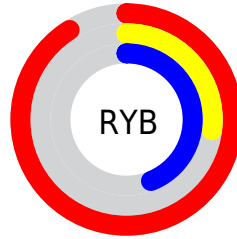
Distribution



Red (91%)

Green (27%)

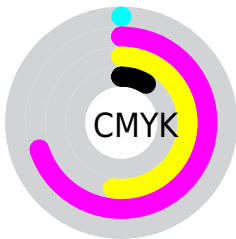
Blue (44%)



Red (91%)

Yellow (27%)

Blue (44%)

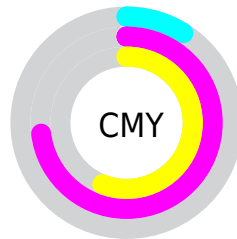


Cyan (0%)

Magenta (70%)

Yellow (52%)

Black (9%)



Cyan (9%)

Magenta (73%)

Yellow (56%)

Brightness & Saturation Gradients

These gradients show how the Android color 4293477743 changes by changing the brightness by 10 percent. The first figure shows a shift by +10% for each color and the second figure -10%.

Similar to the brightness gradients but the following saturation gradients show a change of the Android color 4293477743 by changing the saturation by 10% instead.



4293477743



4293477743

4294967295



4291437143



4294934690



4289396800



4294942141



4287430698



4294949593



4285464599



4294957045



4283498498



4294964735



4281597954



4278190080



4293477743



4293477743



4293471838



4293483648

 4293465676

 4293489810

 4293460028

 4293495715

 4293501620

 4293507782

 4293513687

 4293519592

 4293525498

 4293525503

Harmonies

Analogous

The Analogous color harmony consists of three colors that are next to each other on the color wheel.



4292365737



4293477743



4292630840

Triad

The Triadic color harmony groups three colors that are evenly spaced from another and form a triangle on the color wheel.



4293477743



4282881058



4278227953

Complementary

The Complementary color scheme is a pair of colors which are on the opposite of each other on the color wheel.



4293477743



4282771903

Split Complementary

Split-complementary colors differ from the complementary color scheme. The scheme consists of three colors, the original color and two neighbors of the complement color.



4278229967



4293477743



4278229853

Square

The Square scheme is like the rectangle color scheme, but the four colors are evenly spaced on the color wheel.



4293477743



4287203328



4278230425



4278813429

Rectangle

The Rectangle color scheme consists of four colors that form a rectangle on the color wheel.



4293477743



4291259155



4278230425



4278228968

Sweetspot

The Sweet Spot groups the original color and five complimentary colors.



4293477743



4294953431



4290594281



4286603368



4278190080



4286611584

Same Dimension

The Same Dimension uses a secret algorithm to generate beautiful new colors.



4293477743



4294912352



4293487429



4285885037



4290052142



4281729038

Inverse Universe

The Inverse Universe completely reimagines the original color for something new.



4293477743



4294912352



4282762217



4285885037



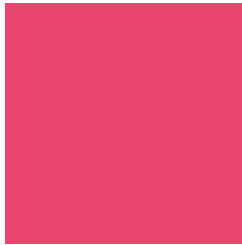
4290052142



4281729038

Previews

White Background



This preview shows how the Android color 4293477743 looks on a white background.

Color Contrast Check

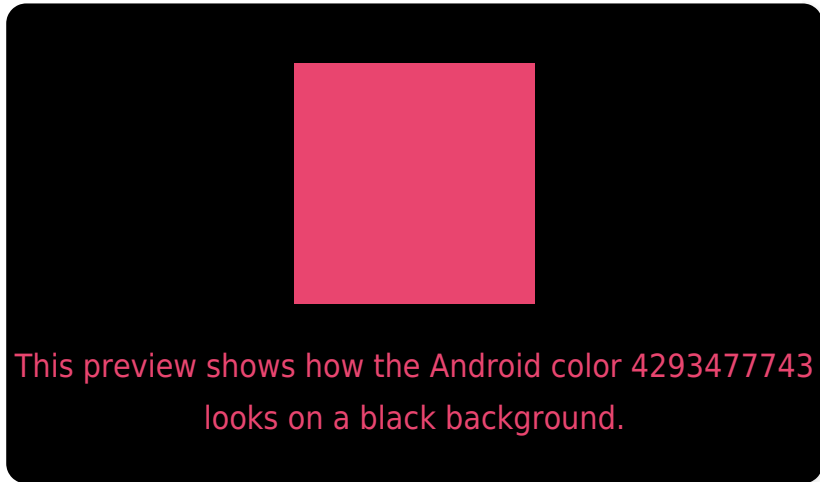
Large Text (above 18pt) WCAG AA ✓ Pass

Any Text WCAG AA × Fail

Large Text (above 18pt) WCAG AAA × Fail

Any Text WCAG AAA × Fail

Black Background



Color Contrast Check

Large Text (above 18pt) WCAG AA ✓ Pass

Any Text WCAG AA ✓ Pass

Large Text (above 18pt) WCAG AAA ✓ Pass

Any Text WCAG AAA × Fail

If you want to check with other color combinations, try the [Color Contrast Checker](#).

Android 4293477743 Background



This preview shows how black text looks on a background with the Android color 4293477743.

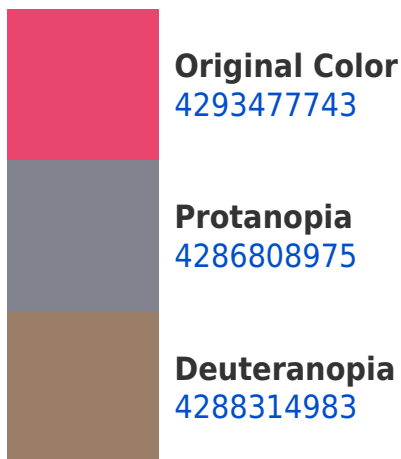


This preview shows how white text looks on a background with the Android color 4293477743.

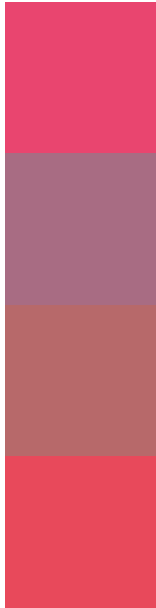
Color Blindness Simulation

Color vision deficiency is a very complex topic, and I could not describe the different causes any better than Wikipedia does, so if you want to learn more, you should check out their [article about color blindness](#).

Dichromacy



Trichromacy



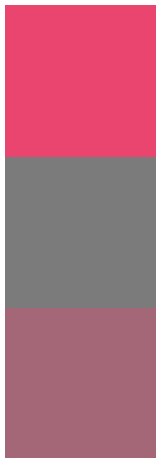
Original Color
4293477743

Protanomaly
4289227907

Deuteranomaly
4290210154

Tritanomaly
4293413211

Monochromacy



Original Color
4293477743

Achromatopsia
4286282619

Achromatomaly
4288898935

CSS Examples

Text

The CSS property to change the color of the text to Android 4293477743 is called "color". The color property can be set on classes, ids or directly on the HTML element.

This example shows how text in the color `rgb(233, 69, 111)` looks like.

```
.text, #text, p{  
    color:rgb(233, 69, 111)  
}
```

If you want to add a text shadow in that color use the text-shadow property, you can generate a text shadow directly with our [CSS Text Shadow Generator](#).

Here you see how black text with a 4 pixel rgb(233, 69, 111) colored shadow looks like.

```
.shadow{ text-shadow: 4px 4px 2px rgb(233, 69, 111) }
```

Border

The CSS property to change the border of an element to Android 4293477743 is called "border". The border property can be set on classes, ids or directly on the HTML element.

This example shows the color as border, it can be applied via the CSS property "border" or "border-color".

```
.border, #border, table{ border:4px solid rgb(233, 69, 111) }
```

If only the border color should be changed use the property `border-color`.

```
.border{ border-color:rgb(233, 69, 111) }
```

If you want to add a box shadow in that color use:

Here you see how a box with a 4 pixel `rgb(233, 69, 111)` colored shadow looks like.

```
.boxshadow{ -moz-box-shadow:4px 4px 4px  
4px rgb(233, 69, 111); -webkit-box-  
shadow:4px 4px 4px 4px rgb(233, 69, 111);  
box-shadow:4px 4px 4px 4px rgb(233, 69,  
111) }
```

Background

The CSS property to change the background color of an element to Android 4293477743 is called "background". The background property can be set on classes, ids or directly on the HTML element.

```
.background, #background, body{  
background: rgb(233, 69, 111) }
```

If only the background color should be changed can be used:

```
.background{ background-color: rgb(233, 69,  
111) }
```

This example shows the color as background, it is applied via the CSS property "background".

To optimize and compress your CSS code, you can use our [online CSS compressor and optimizer](#) based on csstidy. If you want to create a linear or radial gradient as background or border, check our [CSS Gradient Generator](#).

Hey! You found this booklet interesting? Support Converting Colors with the new Membership Option!

The pro membership hides all ads, plus gives you double the colors in the color bucket, and more awesome pro features!

[Learn more, Memberships starting at \\$2.50/m!](#)

**Follow me
on Twitter!**

@ConvertingColor