

# Converting Colors

Android(4293484407)

Have a look what the booklet for  
Android(4293484407) contains.

<b>Android(4293484407)</b> .....	3
<b><i>Conversions</i></b> .....	4
<b><i>Details</i></b> .....	6
<b><i>Harmonies</i></b> .....	11
<b><i>Previews</i></b> .....	23
<b><i>Color Blindness Simulation</i></b> .....	26
<b><i>CSS Examples</i></b> .....	29

# Color

**Android(4293484407)**

# Conversions

## Conversions Part 1

<b>Format</b>	<b>Color</b>
Hex	E95F77
RGB	233, 95, 119
RGB Percent	91%, 37%, 47%
CMY	0.0863, 0.6275, 0.5333
CMYK	0.00, 0.59, 0.49, 0.09
HSL	350°, 76%, 64%
HSV	350°, 59%, 91%
XYZ	41.0263, 26.8400, 20.4711
YIQ	138.9980, 74.5440, 36.7200

# Conversions

## Conversions Part 2

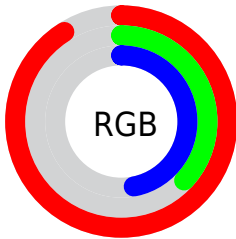
<b>Format</b>	<b>Color</b>
<b>R<sub>YB</sub></b>	233, 95, 119
Decimal	15294327
CIE <sub>Lab</sub>	58.83, 55.35, 14.44
CIE <sub>LCh</sub>	59, 57.198, 14.618
Yxy	26.8400, 0.4644, 0.3038
Android (android.graphics.Color)	4293484407 (0xFFE95F77)
YUV	138.9980, -9.8590, 82.4398
Hunter-Lab	51.8073, 50.6916, 12.8373

# Details

The Android color **4293484407** is a dark color, and the websafe version is hex **FF6699**. The color can be described as middle muted rose. A complement of this color would be **4284475857**, and the grayscale version is **4287335307**.

A 20% lighter version of the original color is **4294940331**, and **4289471815** is the 20% darker color. If you saturate the color by 10%, you get **4293478500**, and if you desaturate by 10%, it is **4293490314**.

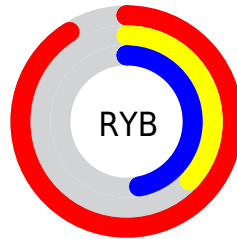
# Distribution



Red (91%)

Green (37%)

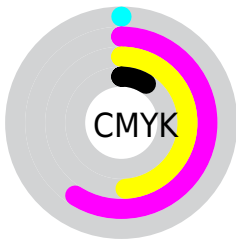
Blue (47%)



Red (91%)

Yellow (37%)

Blue (47%)

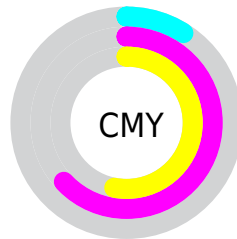


Cyan (0%)

Magenta (59%)

Yellow (49%)

Black (9%)



Cyan (9%)

Magenta (63%)

Yellow (53%)

# Brightness & Saturation Gradients

These gradients show how the Android color 4293484407 changes by changing the brightness by 10 percent. The first figure shows a shift by +10% for each color and the second figure -10%.

Similar to the brightness gradients but the following saturation gradients show a change of the Android color 4293484407 by changing the saturation by 10% instead.





4293484407



4293484407

4294967295



4291445598



4294940331



4289471815



4294947782



4287561777



4294954978



4285595676



4294962687



4283760641



4281991170



4279304192



4278190080



4293484407



4293484407

 4293478500

 4293490314

 4293472337

 4293496477

 4293466429

 4293502385

 4293460522

 4293508292

 4293460009

 4293514455

 4293520362

 4293525502

 4293525503

# Harmonies

## Analogous

The Analogous color harmony consists of three colors that are next to each other on the color wheel.



4292567977



4293484407



4292701513

# Triad

The Triadic color harmony groups three colors that are evenly spaced from another and form a triangle on the color wheel.



4293484407



4283932226



4278229742

# Complementary

The Complementary color scheme is a pair of colors which are on the opposite of each other on the color wheel.



4293484407



4284475857

# Split Complementary

Split-complementary colors differ from the complementary color scheme. The scheme consists of three colors, the original color and two neighbors of the complement color.



4278232019



4293484407



4278232177

# Square

The Square scheme is like the rectangle color scheme, but the four colors are evenly spaced on the color wheel.



4293484407



4287664929



4278232741



4284189679

# Rectangle

The Rectangle color scheme consists of four colors that form a rectangle on the color wheel.



4293484407



4291394352



4278232741



4278230760



# Sweetspot

The Sweet Spot groups the original color and five complimentary colors.



4293484407



4294955481



4291846121



4286604136



4278190080



4286611584



# Same Dimension

The Same Dimension uses a secret algorithm to generate beautiful new colors.



4293484407



4294920809



4293495647



4285885036



4290052127



4281729033



# Inverse Universe

The Inverse Universe completely reimagines the original color for something new.



4293484407



4294920809



4284464617



4285885036



4290052127



4281729033



# Previews

## White Background



This preview shows how the Android color 4293484407 looks on a white background.

## Color Contrast Check

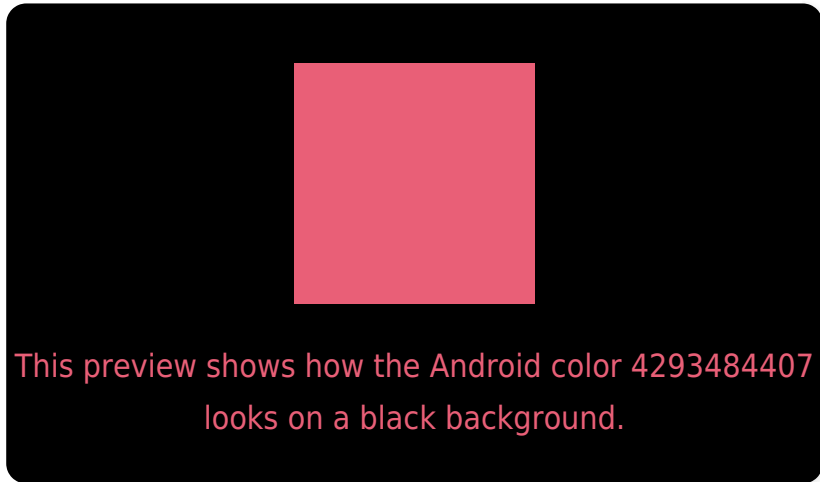
Large Text (above 18pt) WCAG AA ✓ Pass

Any Text WCAG AA ✗ Fail

Large Text (above 18pt) WCAG AAA ✗ Fail

Any Text WCAG AAA ✗ Fail

# Black Background



## Color Contrast Check

Large Text (above 18pt) WCAG AA ✓ Pass

Any Text WCAG AA ✓ Pass

Large Text (above 18pt) WCAG AAA ✓ Pass

Any Text WCAG AAA × Fail

If you want to check with other color combinations, try the [Color Contrast Checker](#).



# Android 4293484407 Background



This preview shows how black text looks on a background with the Android color 4293484407.

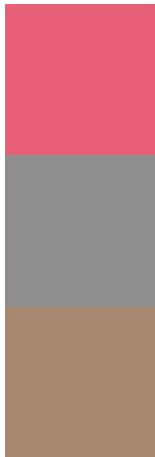


This preview shows how white text looks on a background with the Android color 4293484407.

# Color Blindness Simulation

Color vision deficiency is a very complex topic, and I could not describe the different causes any better than Wikipedia does, so if you want to learn more, you should check out their [article about color blindness](#).

## Dichromacy



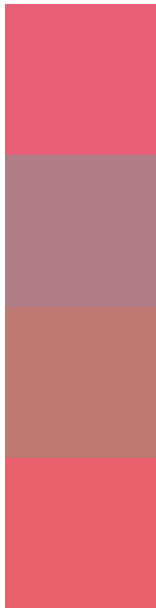
**Original Color**  
4293484407

**Protanopia**  
4287663503

**Deuteranopia**  
4289103985



# Trichromacy



**Original Color**  
4293484407

**Protanomaly**  
4289756294

**Deuteranomaly**  
4290673011

**Tritanomaly**  
4293419373

# Monochromacy



**Original Color**  
4293484407

**Achromatopsia**  
4287335307

**Achromatomaly**  
4289559428

# CSS Examples

## Text

The CSS property to change the color of the text to Android 4293484407 is called "color". The color property can be set on classes, ids or directly on the HTML element.

This example shows how text in the color `rgb(233, 95, 119)` looks like.

```
.text, #text, p{  
    color:rgb(233, 95, 119)  
}
```

If you want to add a text shadow in that color use the text-shadow property, you can generate a text shadow directly with our [CSS Text Shadow Generator](#).

Here you see how black text with a 4 pixel rgb(233, 95, 119) colored shadow looks like.

```
.shadow{ text-shadow: 4px 4px 2px rgb(233, 95, 119) }
```

## Border

The CSS property to change the border of an element to Android 4293484407 is called "border". The border property can be set on classes, ids or directly on the HTML element.

This example shows the color as border, it can be applied via the CSS property "border" or "border-color".

```
.border, #border, table{ border:4px solid rgb(233, 95, 119) }
```

If only the border color should be changed use the property border-color.

```
.border{ border-color:rgb(233, 95, 119) }
```

If you want to add a box shadow in that color use:

Here you see how a box with a 4 pixel rgb(233, 95, 119) colored shadow looks like.

```
.boxshadow{ -moz-box-shadow:4px 4px 4px  
4px rgb(233, 95, 119); -webkit-box-  
shadow:4px 4px 4px 4px rgb(233, 95, 119);  
box-shadow:4px 4px 4px 4px rgb(233, 95,  
119) }
```

# Background

The CSS property to change the background color of an element to Android 4293484407 is called "background". The background property can be set on classes, ids or directly on the HTML element.

```
.background, #background, body{  
background: rgb(233, 95, 119) }
```

If only the background color should be changed can be used:

```
.background{ background-color: rgb(233, 95,  
119) }
```

This example shows the color as background, it is applied via the CSS property "background".

To optimize and compress your CSS code, you can use our [online CSS compressor and optimizer](#) based on csstidy. If you want to create a linear or radial gradient as background or border, check our [CSS Gradient Generator](#).



Hey! You found this booklet interesting? Support Converting Colors with the new Membership Option!

The pro membership hides all ads, plus gives you double the colors in the color bucket, and more awesome pro features!

**[Learn more, Memberships starting at \\$2.50/m!](#)**

**Follow me  
on Twitter!**

@ConvertingColor