

Converting Colors

Android(4293490342)

Have a look what the booklet for
Android(4293490342) contains.

Android(4293490342)	3
<i>Conversions</i>	4
<i>Details</i>	6
<i>Harmonies</i>	11
<i>Previews</i>	23
<i>Color Blindness Simulation</i>	26
<i>CSS Examples</i>	29

Color

Android(4293490342)

Conversions

Conversions Part 1

Format	Color
Hex	E976A6
RGB	233, 118, 166
RGB Percent	91%, 46%, 65%
CMY	0.0863, 0.5373, 0.3490
CMYK	0.00, 0.49, 0.29, 0.09
HSL	335°, 72%, 69%
HSV	335°, 49%, 91%
XYZ	46.9656, 33.0337, 39.9772
YIQ	157.8570, 53.1320, 39.3080

Conversions

Conversions Part 2

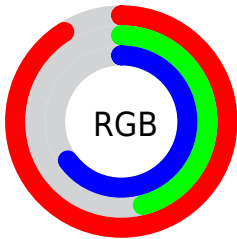
Format	Color
R _{YB}	233, 118, 166
Decimal	15300262
CIE _{Lab}	64.19, 49.65, -4.96
CIE _{LCh}	64, 49.899, 354.299
Y _{xy}	33.0337, 0.3915, 0.2753
Android (android.graphics.Color)	4293490342 (0xFFE976A6)
Y _{UV}	157.8570, 4.0145, 65.9004
Hunter-Lab	57.4749, 45.2801, -1.0072

Details

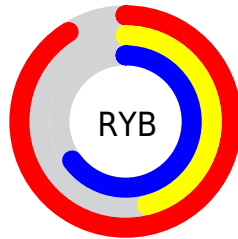
The Android color `4293490342` is a light color, and the websafe version is hex `CC6699`. A complement of this color would be `4285983161`, and the grayscale version is `4288585374`.

A 20% lighter version of the original color is `4294946269`, and `4289609842` is the 20% darker color. If you saturate the color by 10%, you get `4293484440`, and if you desaturate by 10%, it is `4293496244`.

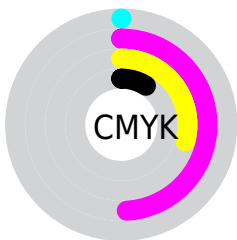
Distribution



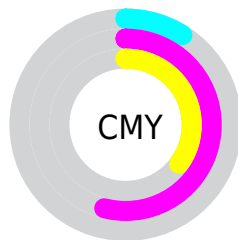
- Red (91%)
- Green (46%)
- Blue (65%)



- Red (91%)
- Yellow (46%)
- Blue (65%)



- Cyan (0%)
- Magenta (49%)
- Yellow (29%)
- Black (9%)



- Cyan (9%)
- Magenta (54%)
- Yellow (35%)

Brightness & Saturation Gradients

These gradients show how the Android color 4293490342 changes by changing the brightness by 10 percent. The first figure shows a shift by +10% for each color and the second figure -10%.

Similar to the brightness gradients but the following saturation gradients show a change of the Android color 4293490342 by changing the saturation by 10% instead.

 4293490342

 4293490342

4294967295

 4291517324

 4294946269

 4289609842

 4294953466

 4287767642

 4294960895

 4285923394

 4284153900

 4282384408

 4280680449

 4278190080

 4293490342

 4293490342

 4293484440

 4293496244

 4293478283

 4293502401

 4293472381

 4293508303

 4293466480

 4293514204

 4293460578

 4293520362

 4293460065

 4293525495

 4293525503

Harmonies

Analogous

The Analogous color harmony consists of three colors that are next to each other on the color wheel.



4291461840



4293490342



4293818489

Triad

The Triadic color harmony groups three colors that are evenly spaced from another and form a triangle on the color wheel.



4293490342



4287734854



4278234595

Complementary

The Complementary color scheme is a pair of colors which are on the opposite of each other on the color wheel.



4293490342



4285983161

Split Complementary

Split-complementary colors differ from the complementary color scheme. The scheme consists of three colors, the original color and two neighbors of the complement color.



4278235839



4293490342



4284198246

Square

The Square scheme is like the rectangle color scheme, but the four colors are evenly spaced on the color wheel.



4293490342



4290614848



4278235537



4280460276

Rectangle

The Rectangle color scheme consists of four colors that form a rectangle on the color wheel.



4293490342



4293230687



4278235537



4278235097

Sweetspot

The Sweet Spot groups the original color and five complimentary colors.



4293490342



4294957545



4290213609



4286605682



4278190080



4286611584

Same Dimension

The Same Dimension uses a secret algorithm to generate beautiful new colors.



4293490342



4294928807



4293492342



4285885038



4290052172



4281729046

Inverse Universe

The Inverse Universe completely reimagines the original color for something new.



4293490342



4294928807



4285981161



4285885038



4290052172



4281729046

Previews

White Background



This preview shows how the Android color 4293490342 looks on a white background.

Color Contrast Check

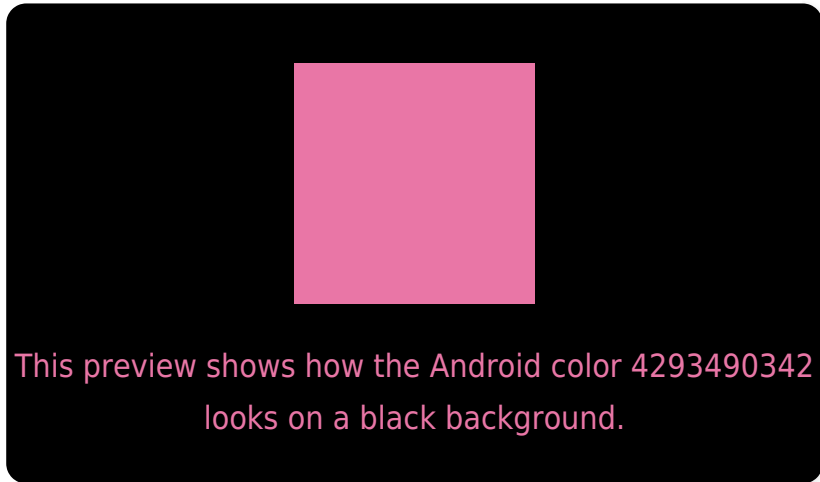
Large Text (above 18pt) WCAG AA × Fail

Any Text WCAG AA × Fail

Large Text (above 18pt) WCAG AAA × Fail

Any Text WCAG AAA × Fail

Black Background



Color Contrast Check

Large Text (above 18pt) WCAG AA ✓ Pass

Any Text WCAG AA ✓ Pass

Large Text (above 18pt) WCAG AAA ✓ Pass

Any Text WCAG AAA ✓ Pass

If you want to check with other color combinations, try the [Color Contrast Checker](#).

Android 4293490342 Background



This preview shows how black text looks on a background with the Android color 4293490342.



This preview shows how white text looks on a background with the Android color 4293490342.

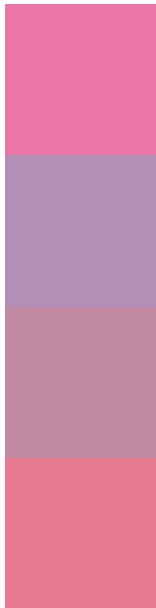
Color Blindness Simulation

Color vision deficiency is a very complex topic, and I could not describe the different causes any better than Wikipedia does, so if you want to learn more, you should check out their [article about color blindness](#).

Dichromacy



Trichromacy



Original Color
4293490342

Protanomaly
4289957557

Deuteranomaly
4290808738

Tritanomaly
4293360273

Monochromacy



Original Color
4293490342

Achromatopsia
4288585374

Achromatomaly
4290351009

CSS Examples

Text

The CSS property to change the color of the text to Android 4293490342 is called "color". The color property can be set on classes, ids or directly on the HTML element.

This example shows how text in the color `rgb(233, 118, 166)` looks like.

```
.text, #text, p{  
    color:rgb(233, 118, 166)  
}
```

If you want to add a text shadow in that color use the text-shadow property, you can generate a text shadow directly with our [CSS Text Shadow Generator](#).

Here you see how black text with a 4 pixel rgb(233, 118, 166) colored shadow looks like.

```
.shadow{ text-shadow: 4px 4px 2px rgb(233, 118, 166) }
```

Border

The CSS property to change the border of an element to Android 4293490342 is called "border". The border property can be set on classes, ids or directly on the HTML element.

This example shows the color as border, it can be applied via the CSS property "border" or "border-color".

```
.border, #border, table{ border:4px solid rgb(233, 118, 166) }
```

If only the border color should be changed use the property `border-color`.

```
.border{ border-color:rgb(233, 118, 166) }
```

If you want to add a box shadow in that color use:

Here you see how a box with a 4 pixel `rgb(233, 118, 166)` colored shadow looks like.

```
.boxshadow{ -moz-box-shadow:4px 4px 4px  
4px rgb(233, 118, 166); -webkit-box-  
shadow:4px 4px 4px 4px rgb(233, 118, 166);  
box-shadow:4px 4px 4px 4px rgb(233, 118,  
166) }
```

Background

The CSS property to change the background color of an element to Android 4293490342 is called "background". The background property can be set on classes, ids or directly on the HTML element.

```
.background, #background, body{  
background: rgb(233, 118, 166) }
```

If only the background color should be changed can be used:

```
.background{ background-color: rgb(233,  
118, 166) }
```

This example shows the color as background, it is applied via the CSS property "background".

To optimize and compress your CSS code, you can use our [online CSS compressor and optimizer](#) based on csstidy. If you want to create a linear or radial gradient as background or border, check our [CSS Gradient Generator](#).

Hey! You found this booklet interesting? Support Converting Colors with the new Membership Option!

The pro membership hides all ads, plus gives you double the colors in the color bucket, and more awesome pro features!

[Learn more, Memberships starting at \\$2.50/m!](#)

**Follow me
on Twitter!**

@ConvertingColor