

Converting Colors

Android(4293492894)

Have a look what the booklet for
Android(4293492894) contains.

Android(4293492894)	3
<i>Conversions</i>	4
<i>Details</i>	6
<i>Harmonies</i>	11
<i>Previews</i>	23
<i>Color Blindness Simulation</i>	26
<i>CSS Examples</i>	29

Color

Android(4293492894)

Conversions

Conversions Part 1

Format	Color
Hex	E9809E
RGB	233, 128, 158
RGB Percent	91%, 50%, 62%
CMY	0.0863, 0.4980, 0.3804
CMYK	0.00, 0.45, 0.32, 0.09
HSL	343°, 70%, 71%
HSV	343°, 45%, 91%
XYZ	47.4950, 35.2306, 36.6447
YIQ	162.8150, 52.9500, 31.5900

Conversions

Conversions Part 2

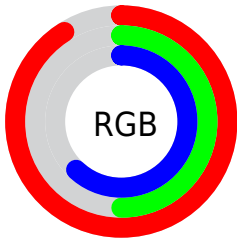
Format	Color
R_{YB}	233, 128, 158
Decimal	15302814
CIE _{Lab}	65.93, 43.63, 2.14
CIE _{LCh}	66, 43.686, 2.805
Yxy	35.2306, 0.3979, 0.2951
Android (android.graphics.Color)	4293492894 (0xFFE9809E)
YUV	162.8150, -2.3738, 61.5522
Hunter-Lab	59.3554, 38.9603, 4.9444

Details

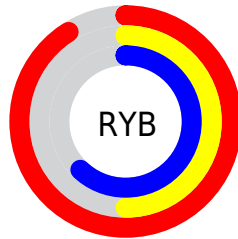
The Android color `4293492894` is a light color, and the websafe version is hex `CC6699`. A complement of this color would be `4286638539`, and the grayscale version is `4288914339`.

A 20% lighter version of the original color is `4294948821`, and `4289678187` is the 20% darker color. If you saturate the color by 10%, you get `4293486989`, and if you desaturate by 10%, it is `4293498799`.

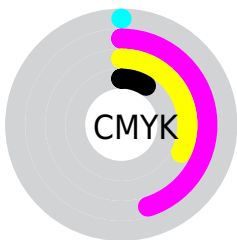
Distribution



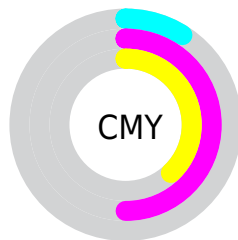
- Red (91%)
- Green (50%)
- Blue (62%)



- Red (91%)
- Yellow (50%)
- Blue (62%)



- Cyan (0%)
- Magenta (45%)
- Yellow (32%)
- Black (9%)



- Cyan (9%)
- Magenta (50%)
- Yellow (38%)

Brightness & Saturation Gradients

These gradients show how the Android color 4293492894 changes by changing the brightness by 10 percent. The first figure shows a shift by +10% for each color and the second figure -10%.

Similar to the brightness gradients but the following saturation gradients show a change of the Android color 4293492894 by changing the saturation by 10% instead.

 4293492894

 4293492894

4294967295

 4291585668

 4294948821

 4289678187

 4294956017

 4287770963

 4294963455

 4285928764

 4284153894

 4282449937

 4280745985

 4278190080

 4293492894

 4293492894

 4293486989

 4293498799

 4293480829

 4293504959

 4293474924

 4293510864

 4293469019

 4293516769

 4293463115

 4293522673

 4293460035

 4293525503

Harmonies

Analogous

The Analogous color harmony consists of three colors that are next to each other on the color wheel.



4292118469



4293492894



4293428600

Triad

The Triadic color harmony groups three colors that are evenly spaced from another and form a triangle on the color wheel.



4293492894



4287408732



4278234853

Complementary

The Complementary color scheme is a pair of colors which are on the opposite of each other on the color wheel.



4293492894



4286638539

Split Complementary

Split-complementary colors differ from the complementary color scheme. The scheme consists of three colors, the original color and two neighbors of the complement color.



4278236105



4293492894



4284133755

Square

The Square scheme is like the rectangle color scheme, but the four colors are evenly spaced on the color wheel.



4293492894



4290092880



4278236323



4284982254

Rectangle

The Rectangle color scheme consists of four colors that form a rectangle on the color wheel.



4293492894



4292709731



4278236323



4278235358

Sweetspot

The Sweet Spot groups the original color and five complimentary colors.



4293492894



4294958054



4291461353



4286605936



4278190080



4286611584

Same Dimension

The Same Dimension uses a secret algorithm to generate beautiful new colors.



4293492894



4294931869



4293498240



4285885037



4290052148



4281729039

Inverse Universe

The Inverse Universe completely reimagines the original color for something new.



4293492894



4294931869



4286633193



4285885037



4290052148



4281729039

Previews

White Background



This preview shows how the Android color 4293492894 looks on a white background.

Color Contrast Check

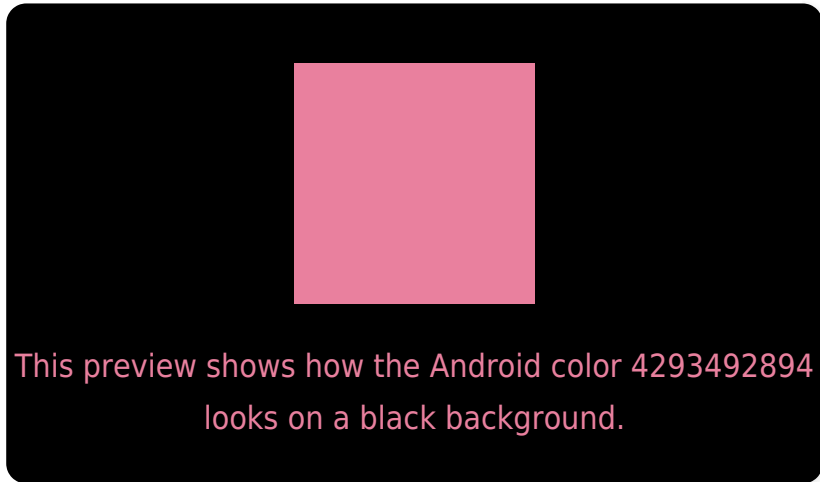
Large Text (above 18pt) WCAG AA × Fail

Any Text WCAG AA × Fail

Large Text (above 18pt) WCAG AAA × Fail

Any Text WCAG AAA × Fail

Black Background



Color Contrast Check

Large Text (above 18pt) WCAG AA ✓ Pass

Any Text WCAG AA ✓ Pass

Large Text (above 18pt) WCAG AAA ✓ Pass

Any Text WCAG AAA ✓ Pass

If you want to check with other color combinations, try the [Color Contrast Checker](#).

Android 4293492894 Background



This preview shows how black text looks on a background with the Android color 4293492894.



This preview shows how white text looks on a background with the Android color 4293492894.

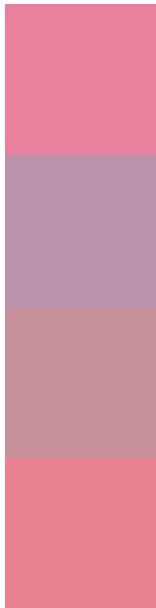
Color Blindness Simulation

Color vision deficiency is a very complex topic, and I could not describe the different causes any better than Wikipedia does, so if you want to learn more, you should check out their [article about color blindness](#).

Dichromacy



Trichromacy



Original Color
4293492894

Protanomaly
4290417834

Deuteranomaly
4291269019

Tritanomaly
4293427859

Monochromacy



Original Color
4293492894

Achromatopsia
4288914339

Achromatomaly
4290549409

CSS Examples

Text

The CSS property to change the color of the text to Android 4293492894 is called "color". The color property can be set on classes, ids or directly on the HTML element.

This example shows how text in the color `rgb(233, 128, 158)` looks like.

```
.text, #text, p{  
    color:rgb(233, 128, 158)  
}
```

If you want to add a text shadow in that color use the text-shadow property, you can generate a text shadow directly with our [CSS Text Shadow Generator](#).

Here you see how black text with a 4 pixel rgb(233, 128, 158) colored shadow looks like.

```
.shadow{ text-shadow: 4px 4px 2px rgb(233, 128, 158) }
```

Border

The CSS property to change the border of an element to Android 4293492894 is called "border". The border property can be set on classes, ids or directly on the HTML element.

This example shows the color as border, it can be applied via the CSS property "border" or "border-color".

```
.border, #border, table{ border:4px solid rgb(233, 128, 158) }
```

If only the border color should be changed use the property `border-color`.

```
.border{ border-color:rgb(233, 128, 158) }
```

If you want to add a box shadow in that color use:

Here you see how a box with a 4 pixel `rgb(233, 128, 158)` colored shadow looks like.

```
.boxshadow{ -moz-box-shadow:4px 4px 4px  
4px rgb(233, 128, 158); -webkit-box-  
shadow:4px 4px 4px 4px rgb(233, 128, 158);  
box-shadow:4px 4px 4px 4px rgb(233, 128,  
158) }
```

Background

The CSS property to change the background color of an element to Android 4293492894 is called "background". The background property can be set on classes, ids or directly on the HTML element.

```
.background, #background, body{  
background: rgb(233, 128, 158) }
```

If only the background color should be changed can be used:

```
.background{ background-color: rgb(233,  
128, 158) }
```

This example shows the color as background, it is applied via the CSS property "background".

To optimize and compress your CSS code, you can use our [online CSS compressor and optimizer](#) based on csstidy. If you want to create a linear or radial gradient as background or border, check our [CSS Gradient Generator](#).

Hey! You found this booklet interesting? Support Converting Colors with the new Membership Option!

The pro membership hides all ads, plus gives you double the colors in the color bucket, and more awesome pro features!

[Learn more, Memberships starting at \\$2.50/m!](#)

**Follow me
on Twitter!**

@ConvertingColor