

# Converting Colors

Android(4293494934)

Have a look what the booklet for  
Android(4293494934) contains.

<b>Android(4293494934)</b> .....	3
<b><i>Conversions</i></b> .....	4
<b><i>Details</i></b> .....	6
<b><i>Harmonies</i></b> .....	11
<b><i>Previews</i></b> .....	23
<b><i>Color Blindness Simulation</i></b> .....	26
<b><i>CSS Examples</i></b> .....	29

# **Color**

**Android(4293494934)**

# Conversions

## Conversions Part 1

<b>Format</b>	<b>Color</b>
Hex	E98896
RGB	233, 136, 150
RGB Percent	91%, 53%, 59%
CMY	0.0863, 0.4667, 0.4118
CMYK	0.00, 0.42, 0.36, 0.09
HSL	351°, 69%, 72%
HSV	351°, 42%, 91%
XYZ	47.9135, 37.1340, 33.4964
YIQ	166.5990, 53.3180, 24.9180

# Conversions

## Conversions Part 2

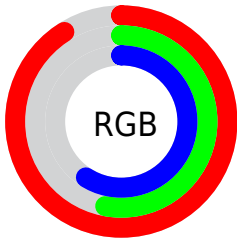
<b>Format</b>	<b>Color</b>
<b>R<sub>YB</sub></b>	233, 136, 150
Decimal	15304854
CIE <sub>Lab</sub>	67.38, 38.55, 8.74
CIE <sub>LCh</sub>	67, 39.526, 12.776
Y <sub>xy</sub>	37.1340, 0.4042, 0.3133
Android (android.graphics.Color)	4293494934 (0xFFE98896)
Y <sub>UV</sub>	166.5990, -8.1833, 58.2337
Hunter-Lab	60.9376, 33.7083, 10.0656

# Details

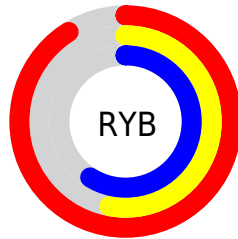
The Android color `4293494934` is a light color, and the websafe version is hex `FF9999`. A complement of this color would be `4287162843`, and the grayscale version is `4289177511`.

A 20% lighter version of the original color is `4294950860`, and `4289680483` is the 20% darker color. If you saturate the color by 10%, you get `4293489026`, and if you desaturate by 10%, it is `4293500842`.

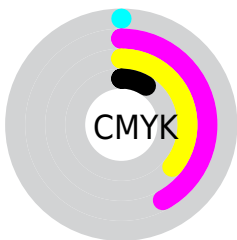
# Distribution



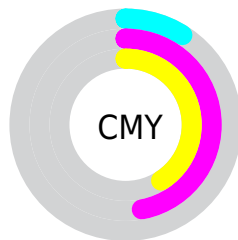
- Red (91%)
- Green (53%)
- Blue (59%)



- Red (91%)
- Yellow (53%)
- Blue (59%)



- Cyan (0%)
- Magenta (42%)
- Yellow (36%)
- Black (9%)



- Cyan (9%)
- Magenta (47%)
- Yellow (41%)

# Brightness & Saturation Gradients

These gradients show how the Android color 4293494934 changes by changing the brightness by 10 percent. The first figure shows a shift by +10% for each color and the second figure -10%.

Similar to the brightness gradients but the following saturation gradients show a change of the Android color 4293494934 by changing the saturation by 10% instead.



 4293494934

 4293494934

4294967295

 4291587708

 4294950860

 4289680483

 4294958056

 4287773516

 4294965503

 4285931829

 4284154400

 4282449928

 4280811521

 4278190080

 4293494934

 4293494934

 4293489026

 4293500842

 4293482862

 4293507006

 4293476954

 4293512914

 4293471046

 4293518822

 4293464882

 4293524986

 4293460002

 4293525503

# Harmonies

## Analogous

The Analogous color harmony consists of three colors that are next to each other on the color wheel.



4292643770



4293494934



4293103477

# Triad

The Triadic color harmony groups three colors that are evenly spaced from another and form a triangle on the color wheel.



4293494934



4286951534



4282756839

# Complementary

The Complementary color scheme is a pair of colors which are on the opposite of each other on the color wheel.



4293494934



4287162843

# Split Complementary

Split-complementary colors differ from the complementary color scheme. The scheme consists of three colors, the original color and two neighbors of the complement color.



4278236371



4293494934



4283872654

# Square

The Square scheme is like the rectangle color scheme, but the four colors are evenly spaced on the color wheel.



4293494934



4289505117



4278761395



4287144681

# Rectangle

The Rectangle color scheme consists of four colors that form a rectangle on the color wheel.



4293494934



4292188005



4278761395



4280791267



# Sweetspot

The Sweet Spot groups the original color and five complimentary colors.



4293494934



4294959333



4292511977



4286606960



4278190080



4286611584



# Same Dimension

The Same Dimension uses a secret algorithm to generate beautiful new colors.



4293494934



4294934674



4293503624



4285885035



4290052122



4281729032



# Inverse Universe

The Inverse Universe completely reimagines the original color for something new.



4293494934



4294934674



4287154153



4285885035



4290052122



4281729032



# Previews

## White Background



This preview shows how the Android color 4293494934 looks on a white background.

## Color Contrast Check

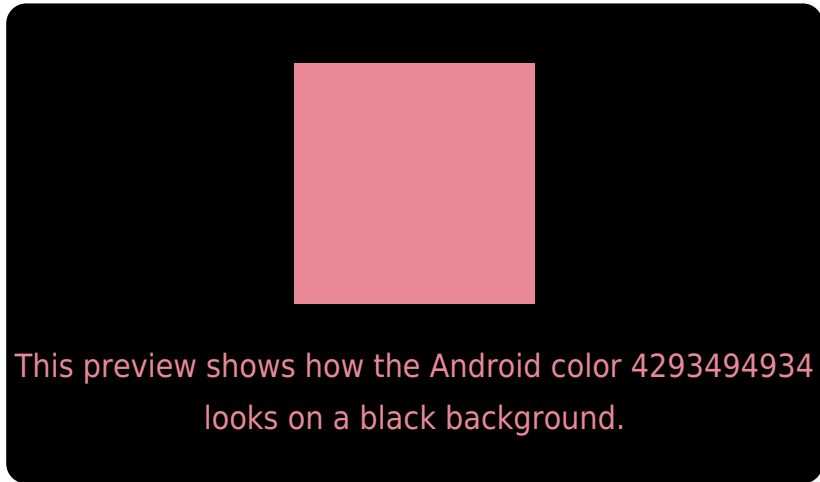
Large Text (above 18pt) WCAG AA × Fail

Any Text WCAG AA × Fail

Large Text (above 18pt) WCAG AAA × Fail

Any Text WCAG AAA × Fail

# Black Background



## Color Contrast Check

Large Text (above 18pt) WCAG AA ✓ Pass

Any Text WCAG AA ✓ Pass

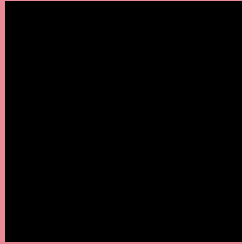
Large Text (above 18pt) WCAG AAA ✓ Pass

Any Text WCAG AAA ✓ Pass

If you want to check with other color combinations, try the [Color Contrast Checker](#).



# Android 4293494934 Background



This preview shows how black text looks on a background with the Android color 4293494934.



This preview shows how white text looks on a background with the Android color 4293494934.

# Color Blindness Simulation

Color vision deficiency is a very complex topic, and I could not describe the different causes any better than Wikipedia does, so if you want to learn more, you should check out their [article about color blindness](#).

## Dichromacy



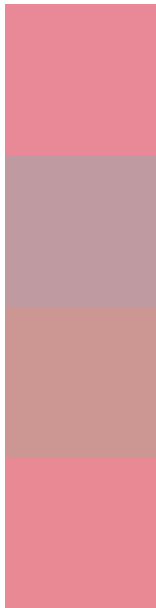
**Original Color**  
4293494934

**Protanopia**  
4289176741

**Deuteranopia**  
4290486162



# Trichromacy



**Original Color**  
4293494934

**Protanomaly**  
4290747040

**Deuteranomaly**  
4291598227

**Tritanomaly**  
4293495188

# Monochromacy



**Original Color**  
4293494934

**Achromatopsia**  
4289177511

**Achromatomaly**  
4290747553

# CSS Examples

## Text

The CSS property to change the color of the text to Android 4293494934 is called "color". The color property can be set on classes, ids or directly on the HTML element.

This example shows how text in the color `rgb(233, 136, 150)` looks like.

```
.text, #text, p{  
    color:rgb(233, 136, 150)  
}
```

If you want to add a text shadow in that color use the text-shadow property, you can generate a text shadow directly with our [CSS Text Shadow Generator](#).

Here you see how black text with a 4 pixel rgb(233, 136, 150) colored shadow looks like.

```
.shadow{ text-shadow: 4px 4px 2px rgb(233, 136, 150) }
```

## Border

The CSS property to change the border of an element to Android 4293494934 is called "border". The border property can be set on classes, ids or directly on the HTML element.

This example shows the color as border, it can be applied via the CSS property "border" or "border-color".

```
.border, #border, table{ border:4px solid rgb(233, 136, 150) }
```

If only the border color should be changed use the property `border-color`.

```
.border{ border-color:rgb(233, 136, 150) }
```

If you want to add a box shadow in that color use:

Here you see how a box with a 4 pixel `rgb(233, 136, 150)` colored shadow looks like.

```
.boxshadow{ -moz-box-shadow:4px 4px 4px  
4px rgb(233, 136, 150); -webkit-box-  
shadow:4px 4px 4px 4px rgb(233, 136, 150);  
box-shadow:4px 4px 4px 4px rgb(233, 136,  
150) }
```

# Background

The CSS property to change the background color of an element to Android 4293494934 is called "background". The background property can be set on classes, ids or directly on the HTML element.

```
.background, #background, body{  
background: rgb(233, 136, 150) }
```

If only the background color should be changed can be used:

```
.background{ background-color: rgb(233,  
136, 150) }
```

This example shows the color as background, it is applied via the CSS property "background".

To optimize and compress your CSS code, you can use our [online CSS compressor and optimizer](#) based on csstidy. If you want to create a linear or radial gradient as background or border, check our [CSS Gradient Generator](#).



Hey! You found this booklet interesting? Support Converting Colors with the new Membership Option!

The pro membership hides all ads, plus gives you double the colors in the color bucket, and more awesome pro features!

**[Learn more, Memberships starting at \\$2.50/m!](#)**

**Follow me  
on Twitter!**

@ConvertingColor